

# Windermere

BY DI-FORD HALL



Windermere Quilt designed by: **Di Ford-Hall**  
Quilt Size: **64" x 64"** • [andoverfabrics.com](http://andoverfabrics.com)

andover

•  
• [makower.uk](http://makower.uk)  
•

Free Pattern Download Available

1384 Broadway New York, NY 10018  
Tel. (800) 223-5678 • [andoverfabrics.com](http://andoverfabrics.com)

# Windermere Title Quilt



Introducing Andover Fabrics new collection: **WINDERMERE** by Di Ford-Hall

Quilt designed by Di Ford-Hall

Quilt finishes 64" x 64"

16 Block V: 5" x 5"

4 Block W: 5" x 5"

4 Block X: 5" x 5"

32 Block Y: 5" x 5"

4 Block Z: 5" x 5"

*These gorgeous reproduction prints are artfully arranged to show them at their best. The medallion-style setting harks back to quilts from the 1800s. Easy flip-and-stitch piecing methods make this quilt a delight to make.*

## Cutting Directions

**Note:** Read assembly directions before cutting patches. All measurements are cut sizes and include 1/4" seam allowances. A fat 1/8 is a 9" x 20"-22" cut of fabric. A fat 1/4 is an 18" x 20"-22" cut. The mitered borders include extra length for insurance. WOF designates the width of fabric from selvedge to selvedge (approximately 42" wide).

**Fabric A** Fussy-cut (1) square 10 1/2", centering one flower bouquet

**Fabric B** Fussy-cut (4) borders 7 1/2" x 66 1/2", cut lengthwise and centering floral stripe

**Fabric C** Fussy-cut (4) strips 5 1/2" x 30 1/2", cut lengthwise (does not include extra length)

**Fabric D** Fussy-cut (4) borders 2 1/2" x 22", cut lengthwise from floral print

**Fabric E** Fussy-cut (2) squares 10" (read step 1 before cutting)

**Fabric F** Cut (64) squares 3"

**Fabric G** Cut (20) squares 5 1/2"

**Fabric H** Cut (2) squares 5 7/8", cut diagonally once

## Fabric Requirements

		Yardage	Fabric
<b>Fabric A</b>	center	1 panel (2/3 yard)	8915-E
<b>Fabric B</b>	border	2 yards	8916-E
<b>Fabric C</b>	border	1 yard	8918-L
<b>Fabric D</b>	border	3/4 yard	8919-EN
<b>Fabric E</b>	center	fat 1/4 yard	8920-E
<b>Fabric F</b>	blocks	1/2 yard	8922-E
<b>Fabric G</b>	blocks	1/2 yard	8922-LT
<b>Fabric H</b>	blocks	fat 1/8 yard	8923-E
<b>Fabric I</b>	blocks	1/2 yard	8923-LT
<b>Fabric J</b>	blocks	1/2 yard	8926-LY
<b>Fabric K</b>	blocks	fat 1/8 yard	8927-EP
<b>Fabric L</b>	blocks	3/8 yard	8927-LY
<b>Fabric M</b>	binding	5/8 yard	8928-EN
<b>Fabric N</b>	blocks	1/2 yard	8928-LR
<b>Fabric O</b>	blocks	3/4 yard	8929-EL
<b>Backing</b>		4 yards	8927-E

**Fabric I** Cut (32) rectangles 3" x 5 1/2"

**Fabric J** Cut (32) rectangles 3" x 5 1/2"

**Fabric K** Cut (8) squares 3"  
Cut (2) squares 3 1/2"

**Fabric L** Cut (36) squares 3"

**Fabric M** Cut (7) strips 2 1/2" x WOF for binding

**Fabric N** Cut (44) squares 3"  
Cut (2) squares 3 1/2"

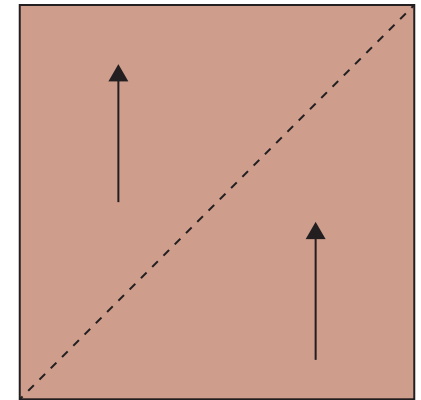
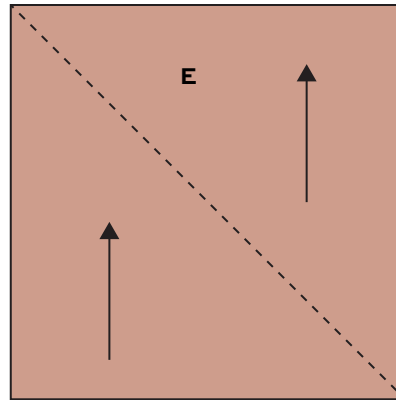
**Fabric O** Cut (72) squares 3"  
Cut (4) squares 3 3/8", cut diagonally once

**Backing** Cut (2) panels 36" x 72", pieced to fit quilt top with overlap on all sides

# Windermere Quilt

## Making the Quilt

- Referring to the Cutting Diagram, cut an E square in half diagonally once as shown. Cut the second square in the opposite mirror-image direction. Position the Fabric A square on point on a flat surface. Place the E triangles from the first cutting on the top left and bottom right sides of the Fabric A square, paying attention to the print orientation. Position the triangles from the second cutting on the remaining sides. Refer to the Quilt Diagram on the next page. When you are satisfied that the prints are upright, match centers and stitch the first triangles to the square. Trim the points that stick out even with the sides of the square. Matching centers, stitch the other triangles to remaining sides. Trim the center to  $16\frac{1}{2}$ " square, centering the A square.
- Sew Fabric D borders to the sides of the pieced square, starting and stopping stitching  $\frac{1}{4}$ " from the raw edges of the square. Miter the borders and trim the excess from the seam allowance. The pieced center should measure  $20\frac{1}{2}$ " square.
- Blocks V and W are made with quick stitch-and-flip piecing methods. Draw a diagonal line on the wrong side of each Fabric L and N  $3$ " square. Referring to Diagram 1, place a marked N square on a Fabric G  $5\frac{1}{2}$ " square, right sides together, aligning raw edges at the corner. Stitch on the drawn line; trim away and discard excess fabric. Press open. Repeat on the opposite corner with a Fabric L square, watching orientation of the sewing. Repeat on the remaining corners with Fabric L and N squares (Diagram 2). The block should measure  $5\frac{1}{2}$ " square. Make 16 Block V. Likewise, make 4 Block W using 3 N squares and 1 L square in the corners.
- Refer to the Quilt Diagram for the remaining steps. Join 4 Block V to make a border. Make 4 borders like this. Sew a border to the side of the pieced center, orienting the blocks as shown. Repeat for the opposite side. Sew Block W to ends of remaining borders. Sew to the top and bottom.
- Refer to the Block X diagram. Sew 2 Fabric O triangles to adjacent sides of a Fabric K  $3$ " square. Press away from the K. Sew a Fabric H triangle to the long edge. The block should measure  $5\frac{1}{2}$ " square. Make 4 Block X.
- Join Fabric C strips to opposite sides of quilt. Sew Block X to ends of remaining Fabric C strips, orienting the blocks as needed for the design. Sew to the top and bottom.



Fabric E Cutting

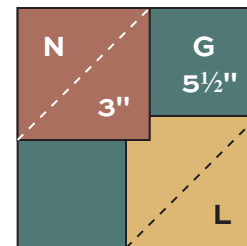


Diagram 1

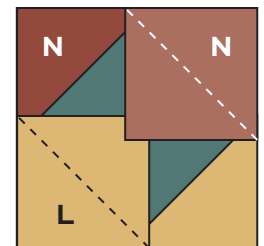
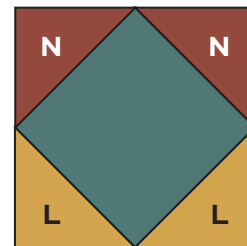
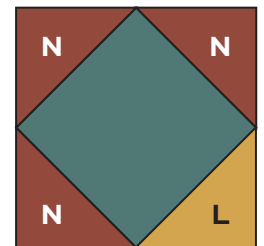


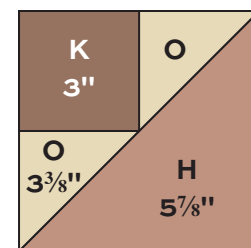
Diagram 2



Block V Make 16



Block W – Make 4

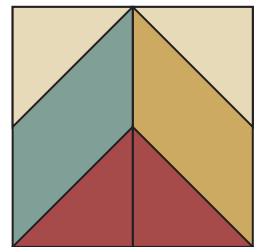
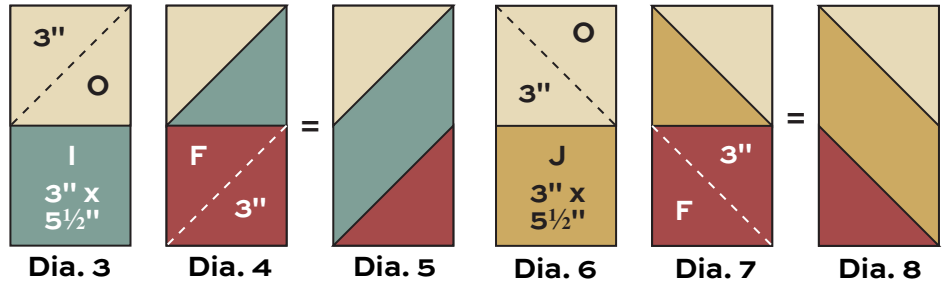


Block X – Make 4

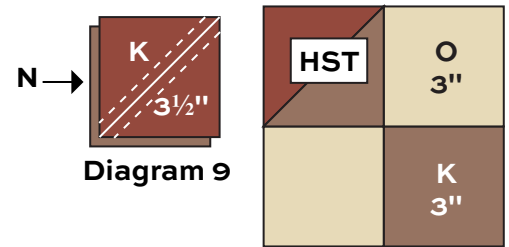


# Windermere Quilt

7. Draw a diagonal line on the wrong side of 64 Fabric O and 64 Fabric F 3" squares. Place a marked O square at one end of a Fabric I rectangle, orienting the drawn line as shown (Diagram 3). Stitch on the drawn line; trim away excess fabric. Press open. Sew a Fabric F to the bottom of the same rectangle, stitching in the same direction as shown in Diagram 4. Trim and press. Make 32 units like this (Diagram 5). Likewise, make 32 units with Fabric O and Fabric F squares stitched on Fabric J rectangles, noting that the line of stitching is in the opposite direction (Diagrams 6-8). Join one of each unit to make Block Y. The block should measure 5½". Make 32. Set aside.



Block Y – Make 32



Block Z – Make 4

8. The Z blocks use half-square triangles (HST) that finish 2½" square. Use your favorite method to make HST, or follow these directions. Draw a diagonal line on the wrong side of each Fabric K 3½" square (Diagram 9). Place a marked square on a Fabric N square, right sides together. Sew ¼" seam on each side of the marked line; cut apart on the marked line. Press open to make pieced HST. Trim the HST to 3" square. Make 4 HST. Join 1 HST, 2 Fabric O 3" squares, and 1 Fabric K 3" square to make a Block Z. The block should measure 5½". Make 4.
9. Join 8 Fabric Y blocks to make a border, orienting the blocks as shown in the Quilt Diagram. Make 4 borders alike. Sew borders to opposite sides of the quilt. Sew Block Z to ends of remaining pieced borders, rotating the Block Z as needed for the design. Sew to the top and bottom of the quilt.
10. Join Fabric B borders to the quilt. Miter the corners and trim the excess fabric.

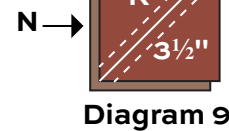
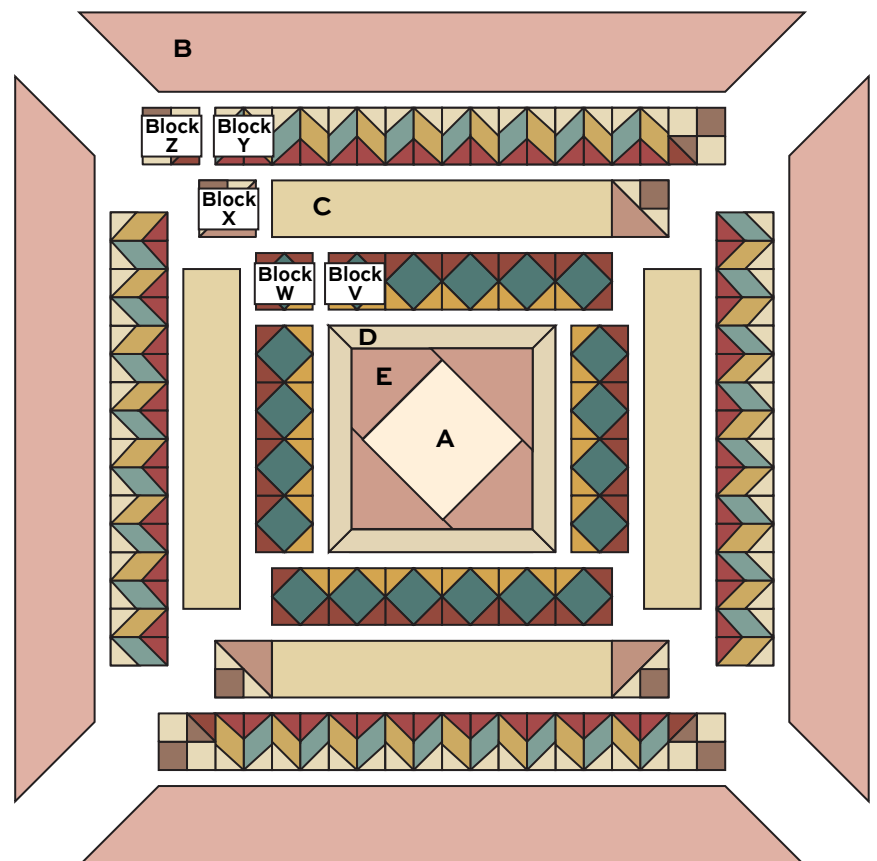


Diagram 9

## Finishing the Quilt

11. Layer the quilt with batting and backing and baste. Quilt in the ditch around borders and block patches. Quilt around the printed motifs as you wish. Bind to finish the quilt.



Quilt Diagram

# Windermere BY DI FORD-HALL



8915-E\*



8915-L



8916-E\*



8916-L



8917-E



8917-L



8918-E



8918-L\*



8919-EN\*



8919-L



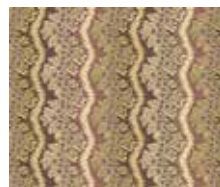
8920-E\*



8920-LP



8921-E



8921-LP



8922-E\*



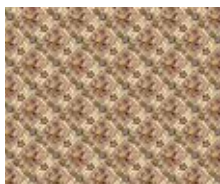
8922-LT\*



8923-E\*



8923-LT\*



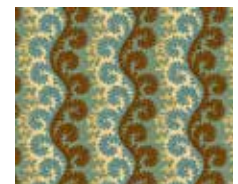
8924-E



8924-L



8925-E



8925-LT



8926-EN



8926-LY\*



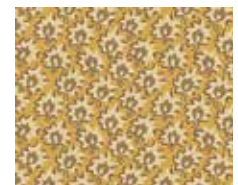
8927-E\*



8927-EP\*



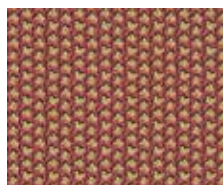
8927-LT



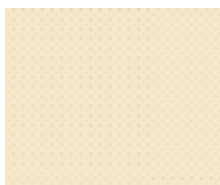
8927-LY\*



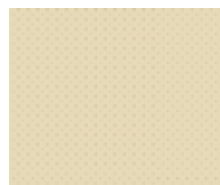
8928-EN\*



8928-LR\*



8929-EL\*



8929-L

\*Indicates fabrics used in quilt pattern.  
Fabrics shown are 15% of actual size.

andover

•  
• **makower uk**  
•  
• Concord Fabrics UK Ltd

Free Pattern Download Available  
1384 Broadway New York, NY 10018  
Tel. (800) 223-5678 • andoverfabrics.com