

Water Garden

FABRICS BY JANE DIXON



Cascading Garden Quilt
Design: **Yvette Marie Jones**

Quilt Size: **56" x 66"**

andoverfabrics.com



About Water Garden

Cool, still water, floating lily pads, and the willowy bamboo of a quiet pond enchanted and inspired "Water Garden". A whimsical collection of turquoise, teal, greens, and gray — where playful Koi fish circle beneath, eyeing iridescent dragonflies above. — *Jane Dixon*



andover



makower uk
The Henley Studio

Free Pattern Download Available

1384 Broadway New York, NY 10018
Tel. (800) 223-5678 • andoverfabrics.com

Cascading Garden Quilt



Introducing Andover Fabrics new collection: **Water Garden** by Jane Dixon

Quilt designed by Yvette Marie Jones

Quilt finishes 56" x 66"

Flickering fireflies flit around the edges of this unusual strippy quilt. The design tricks the eye, making it hard to find the simple stitch-and-flip blocks. Fabric from one block is used in the adjacent block to blur seam lines, resulting in a flowing cascade of color and texture.

Cutting Directions

Note: Read assembly directions before cutting patches. All measurements are cut sizes and include 1/4" seam allowances. A fat 1/4 is an 18" x 20"-22" cut. WOF designates the width of fabric from selvedge to selvedge (approximately 42" wide).

Fabric Requirements

		Yardage	Fabric
Fabric A	setting	3/4 yard	7433-TL
Fabric B	setting	fat 1/4 yard	7434-TG
Fabric C	setting	fat 1/4 yard	7434-T
Fabric D	setting	1/2 yard	7435-T
Fabric E	setting	1/4 yards	7435-TL
Fabric F	setting	fat 1/4 yard	7437-T
*Fabric G	setting	fat 1/4 yard	7437-TL
Fabric H	setting, binding	1 yard	7439-T
Fabric I	setting	1/2 yard	7433-CL
Fabric J	setting	1/2 yard	7439-CG
Fabric K	setting	3/4 yard	7439-CO
Fabric L	setting	fat 1/4 yard	7434-CK
Fabric M	setting	fat 1/4 yard	A-T-Galaxy
Fabric N	setting	fat 1/4 yard	A-T-Indian Summer
Backing		4 yards	7432-T

Fabric A Cut (19) rectangles 4 1/2" x 6 1/2", cut lengthwise
Cut (38) squares 2 1/2" x 2 1/2"

Fabric B Cut (5) rectangles 4 1/2" x 6 1/2"
Cut (10) squares 2 1/2" x 2 1/2"

Fabric C Cut (2) rectangles 4 1/2" x 6 1/2"
Cut (4) squares 2 1/2" x 2 1/2"

Fabric D Cut (2) strips 4 1/2" x 18 1/2"
Cut (4) strips 4 1/2" x 12 1/2"
Cut (4) strips 4 1/2" x 6 1/2"

Fabric E Cut (4) strips 4 1/2" x 24 1/2"
Cut (4) strips 4 1/2" x 18 1/2"
Cut (4) strips 4 1/2" x 12 1/2"
Cut (2) strips 4 1/2" x 6 1/2"
Cut (28) squares 2 1/2" x 2 1/2"

Fabric F Cut (5) rectangles 4 1/2" x 6 1/2", cut lengthwise
Cut (10) squares 2 1/2" x 2 1/2"

Fabric G Cut (5) rectangles 4 1/2" x 6 1/2", cut lengthwise
Cut (10) squares 2 1/2" x 2 1/2"

Fabric H Cut (7) strips 2 1/2" x WOF for binding
Cut (7) rectangles 4 1/2" x 6 1/2"
Cut (12) squares 2 1/2" x 2 1/2"

Fabric I Cut (14) rectangles 4 1/2" x 6 1/2", cut lengthwise
Cut (28) squares 2 1/2" x 2 1/2"

Fabric J Cut (9) rectangles 4 1/2" x 6 1/2"
Cut (16) squares 2 1/2" x 2 1/2"

Fabric K Cut (19) rectangles 4 1/2" x 6 1/2"
Cut (36) squares 2 1/2" x 2 1/2"

Fabric L Cut (2) rectangles 4 1/2" x 6 1/2"
Cut (4) squares 2 1/2" x 2 1/2"

Fabric M Cut (5) rectangles 4 1/2" x 6 1/2"
Cut (10) squares 2 1/2" x 2 1/2"

Fabric N Cut (6) rectangles 4 1/2" x 6 1/2"
Cut (10) squares 2 1/2" x 2 1/2"

Backing Cut (2) panels 37" x 64", pieced to fit quilt top with overlap on all sides

Cascading Garden Quilt

Making and Assembling the Quilt

1. Each block is made using a $4\frac{1}{2}$ " x $6\frac{1}{2}$ " rectangle and two $2\frac{1}{2}$ " squares in a second fabric. Draw a diagonal line on the back of each $2\frac{1}{2}$ " square. Look carefully at the Quilt Diagram and quilt photograph to determine which prints go together for each block. Lay out the vertical rows one at a time with the appropriate rectangles, marked squares, and Fabric D and E strips in position.

2. Pick up a rectangle and the 2 appropriate marked squares to make a block. Position the square on the $4\frac{1}{2}$ " x $6\frac{1}{2}$ " rectangle, right sides together, aligning raw edges at one corner. Hint: To be certain that a directional print is orientated to your satisfaction, temporarily pin along the diagonal seam on the square, flip the corner up, and check the print. If it is in the wrong orientation, unpin and rotate the square.



Diagram 1

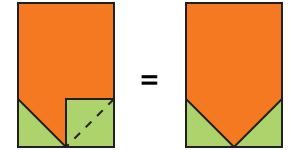


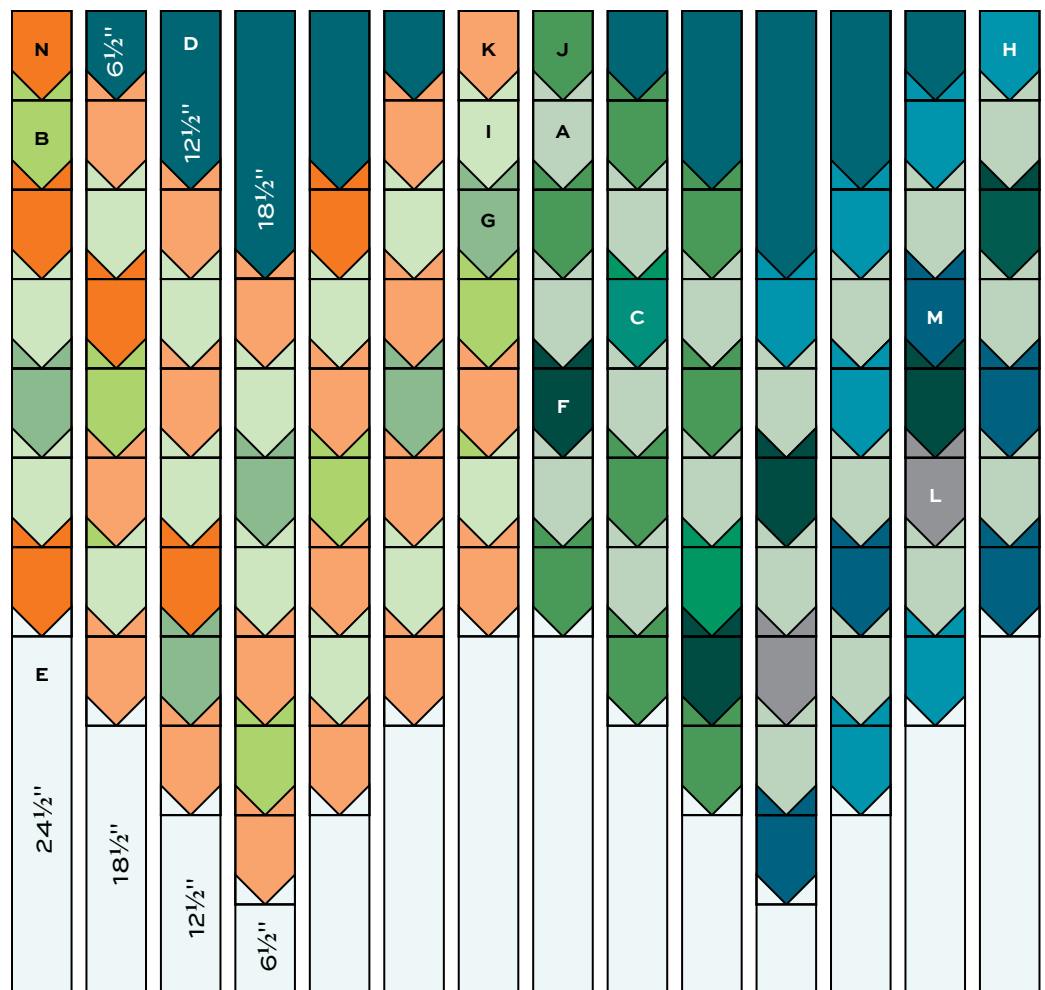
Diagram 2

Stitch on the drawn line (Diagram 1). Trim away and discard excess fabric. Press open. Repeat on the adjacent corner, watching the direction of the sewing line (Diagram 2).

3. Repeat these steps to make blocks with all $4\frac{1}{2}$ " x $6\frac{1}{2}$ " rectangles. Note that the bottom block in each column is made with Fabric E $2\frac{1}{2}$ " squares in the corners.

4. Add 2 appropriate squares to one end of each Fabric D strip as described in Step 2, noting carefully which fabric squares are sewn to each strip.

5. Referring to the Quilt Diagram, join 7 blocks, the appropriate pieced Fabric D strips, and Fabric E strips in each of 14 vertical rows. Join the rows, matching seams of the blocks. Press seam allowances open between rows.



Quilt Assembly

Finishing the Quilt

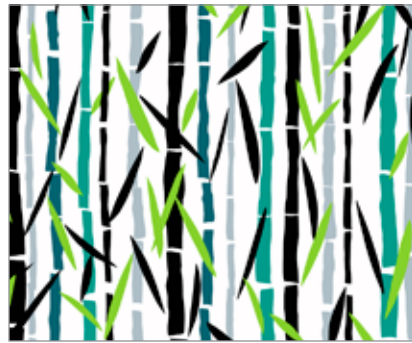
6. Layer the quilt with batting and backing and baste. Quilt in the ditch around block patches. Bind to finish the quilt.

Water Garden

FABRICS BY JANE DIXON



7432-T*



7433-TL*



7434-T*



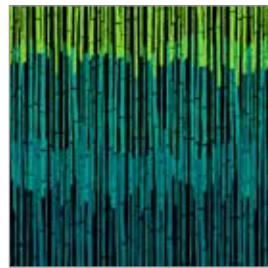
7434-TG*



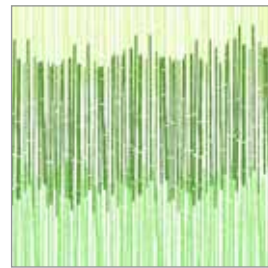
7435-T*



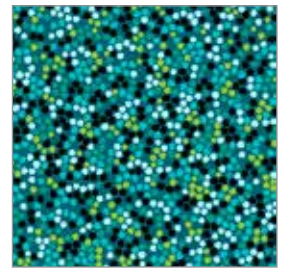
7435-TL*



7437-T*



7437-TL*



7439-T*



7432-C



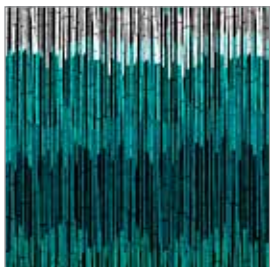
7433-CL*



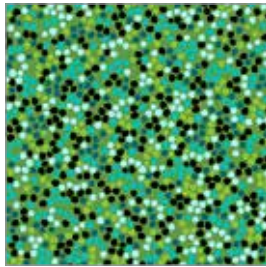
7434-CK*



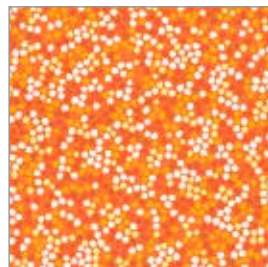
7435-CL



7437-CT



7439-CG*



7439-CO*

Blend with fabrics from
Textured Solids



A-T-Galaxy*



A-T-Indian Summer*

*Indicates fabrics used in quilt pattern.
Fabrics shown are 15% of actual size.

andover

makower uk
The Henley Studio

Free Pattern Download Available

1384 Broadway New York, NY 10018
Tel. (800) 223-5678 • andoverfabrics.com