

# Urban Textures

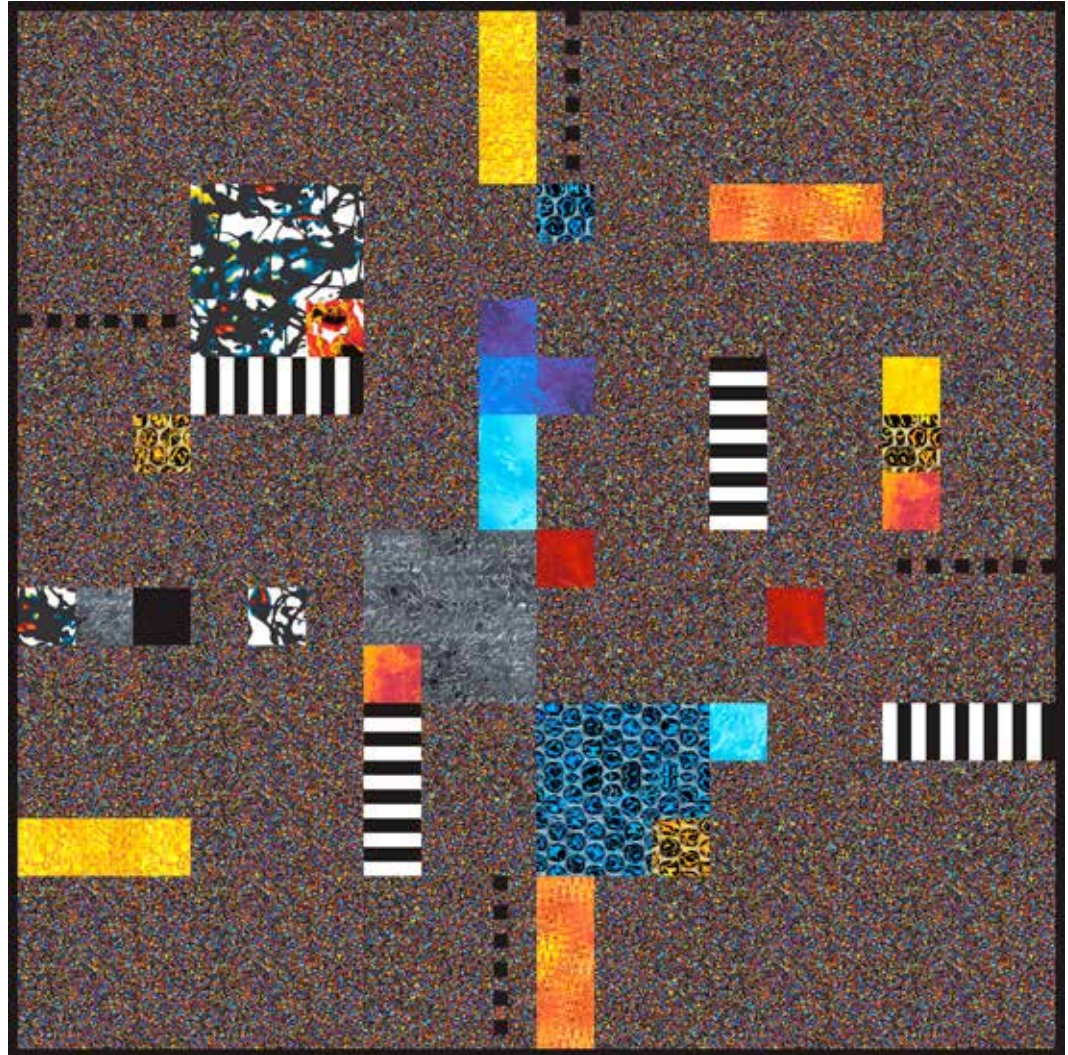
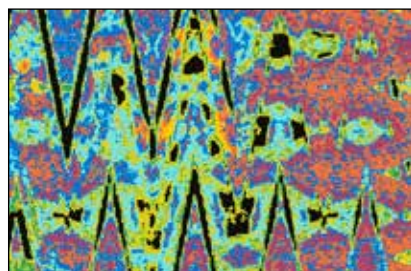
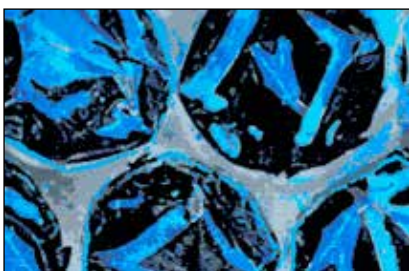
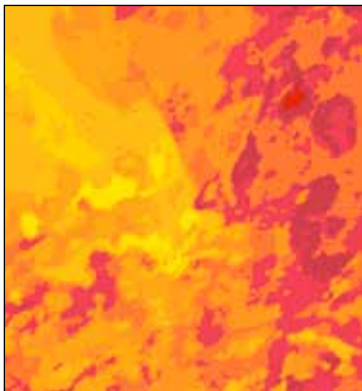
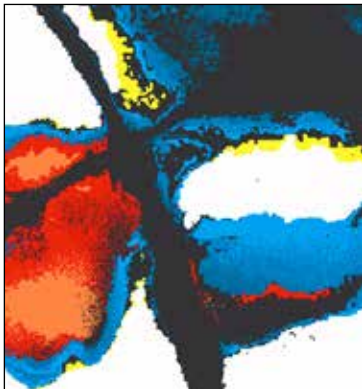
FABRICS BY SAQA (Studio Art Quilt Associates)



Quilt designed by:  
**Lonni Rossi**

Quilt Size: **54" x 54"**

[andoverfabrics.com](http://andoverfabrics.com)



## About Urban Textures

These designs were selected from an open contest to all SAQA members and curated by Luana Rubin and developed in collaboration with Andover Fabrics.

andover



makower uk  
*The Henley Studio*

Free Pattern Download Available

1384 Broadway New York, NY 10018  
Tel. (800) 223-5678 • [andoverfabrics.com](http://andoverfabrics.com)

5/30/14

# Urban Textures



Introducing Andover Fabrics new collection:  
**URBAN TEXTURES** by SAQA (Studio Art Quilt Associates)  
Quilt designed by Lonni Rossi

Quilt finishes 54" x 54"  
36 Blocks: 9" x 9"

*Bold and contemporary in both design and use of color, this quilt sings of the geometry of modern city streets. The maker challenges you to experiment with design by changing the placement of the blocks. The addition of textured and unusual threads in the quilting gives you even more opportunity for innovation.*

## Cutting Directions

**Note:** Read assembly directions before cutting patches. All measurements are cut sizes and include 1/4" seam allowances. A fat 1/8 is a 9" x 21" -22" cut of fabric. WOF designates the width of fabric from selvedge to selvedge (approximately 42" wide).

*You can follow the layout as shown in the diagrams and quilt photo, or you can create your own composition. Mix it up, change it up, and make it work for your personal color and design sensibilities. To make it even more your own, change the number you make of each block. Simply follow the block diagrams and cut patches in your color choices (the fat 1/8's are generous to allow this). Make a total of 36 blocks (including the Fabric J 9 1/2" squares).*

**Fabric A** Cut (1) rectangle 3 1/2" x 6 1/2"  
Cut (4) squares 3 1/2" x 3 1/2", cut from different parts of the print

**Fabric B** Cut (5) squares 3 1/2" x 3 1/2", cut from different parts of the print

**Fabric C** Cut (1) rectangle 6 1/2" x 9 1/2"  
Cut (1) rectangle 3 1/2" x 6 1/2"  
Cut (2) squares 3 1/2" x 3 1/2"

**Fabric D** Cut (1) square 3 1/2" x 3 1/2"

**Fabric E** Cut (2) rectangles 3 1/2" x 9 1/2"

## Fabric Requirements

		<b>Yardage</b>	<b>Fabric</b>
<b>Fabric A</b>	blocks	1/8 yard	7476-B
<b>Fabric B</b>	blocks	1/8 yard	7476-O
<b>Fabric C</b>	blocks	fat 1/8 yard	7477-K
<b>Fabric D</b>	blocks	fat 1/8 yard	7477-O
<b>Fabric E</b>	blocks	fat 1/8 yard	7478-O
<b>Fabric F</b>	blocks	fat 1/8 yard	7479-B
<b>Fabric G</b>	blocks	fat 1/8 yard	7479-O
<b>Fabric H</b>	blocks	fat 1/8 yard	7482-K
<b>Fabric I</b>	blocks	fat 1/8 yard	7482-O
<b>Fabric J</b>	blocks	2 1/2 yards	7483-K
<b>Fabric K</b>	blocks	fat 1/8 yard	A-T-White Lies
<b>*Fabric L</b>	blocks, binding	3/4 yard	A-T-Magnum
<b>*Backing</b>		3 3/4 yards	A-T-Magnum

**Fabric F** Cut (1) rectangle 6 1/2" x 9 1/2"  
Cut (1) rectangle 3 1/2" x 6 1/2"  
Cut (1) square 3 1/2" x 3 1/2"

**Fabric G** Cut (3) squares 3 1/2" x 3 1/2"

**Fabric H** Cut (1) rectangle 6 1/2" x 9 1/2"  
Cut (1) rectangle 3 1/2" x 6 1/2"  
Cut (1) square 3 1/2" x 3 1/2"

**Fabric I** Cut (2) rectangles 3 1/2" x 9 1/2"

**Fabric J** Cut (10) squares 9 1/2" x 9 1/2"  
Cut (19) rectangles 6 1/2" x 9 1/2"  
Cut (8) rectangles 3 1/2" x 9 1/2"  
Cut (6) rectangles 3 1/2" x 6 1/2"  
Cut (4) squares 3 1/2" x 3 1/2"  
Cut (4) strips 1 3/4" x 9 1/2"  
Cut (4) strips 1 1/4" x 9 1/2"  
Cut (6) strips 1 1/4" x 7"

**Fabric K** Cut (6) strips 1 1/4" x 16"

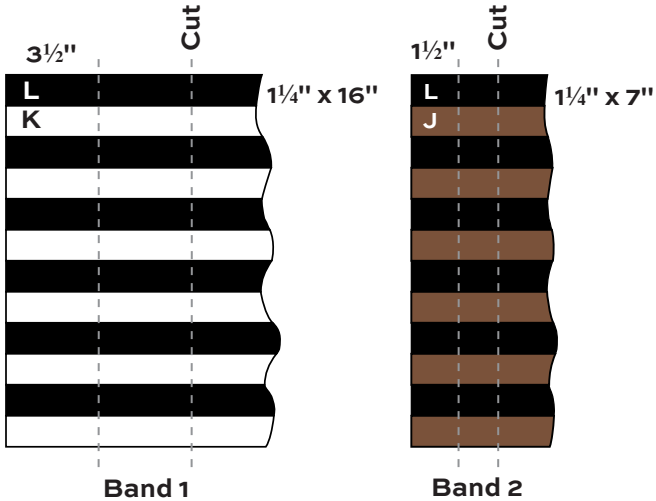
**Fabric L** Cut (6) strips 2 1/2" x WOF for binding  
Cut (6) strips 1 1/4" x 16"  
Cut (6) strips 1 1/4" x 7"  
Cut (1) square 3 1/2" x 3 1/2"

**Backing** Cut (2) panels 32" x 62", pieced to fit quilt top with overlap on all sides

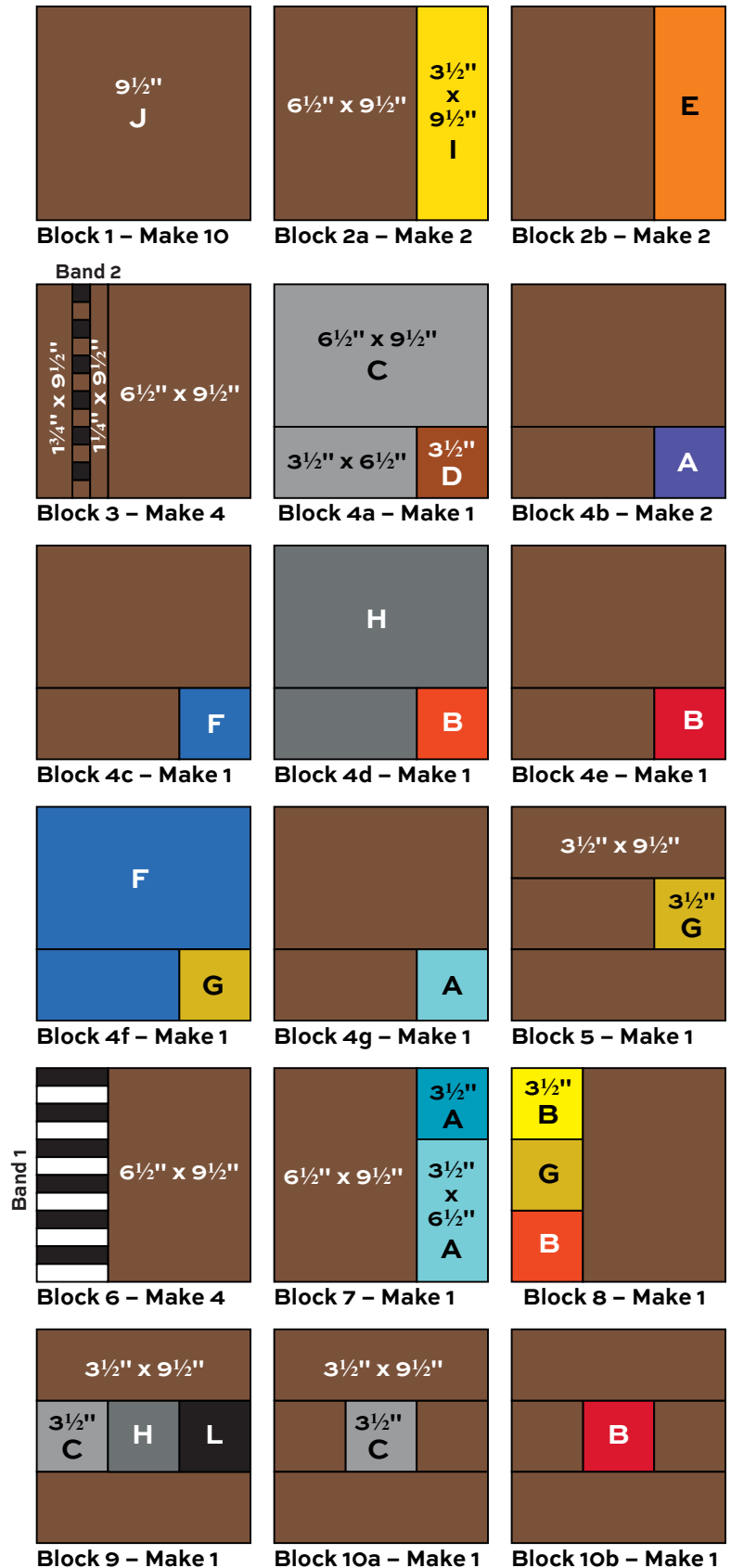
# Urban Textures Quilt

## Making and Assembling the Quilt

- Referring to Band 1 diagram, sew 6 Fabric K alternately with 6 Fabric L  $1\frac{1}{4}'' \times 16''$  strips to make a pieced band, taking *scant*  $\frac{1}{4}''$  seams. Press seam allowances in one direction. The band should measure  $9\frac{1}{2}''$  from edge to edge. Cut 4 segments from the band that each measure  $3\frac{1}{2}''$  wide. Save these segments for Block 6.



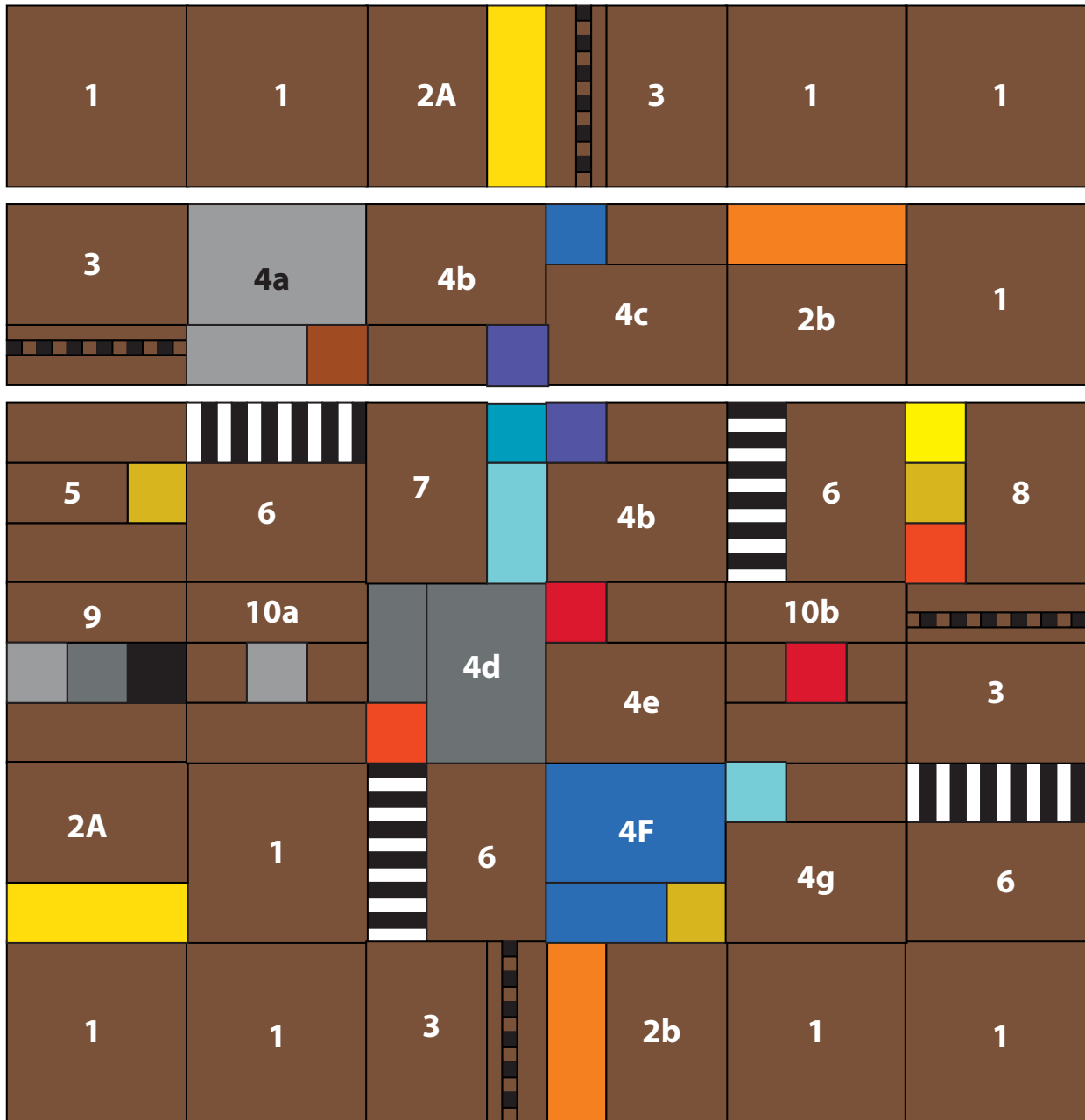
- Likewise, make a pieced band with 6 Fabric J and 6 Fabric L  $1\frac{1}{4}'' \times 7''$  strips (Band 2). The band should measure  $9\frac{1}{2}''$  across. Cut 4 segments that each measure  $1\frac{1}{4}''$  wide. Save these segments for Block 3.
- Referring to the Block Diagrams, join patches to make the number of blocks shown, or make more of the ones you like the most. Change colors around as you wish. Make a total of 36 blocks (including Fabric J  $9\frac{1}{2}''$  squares).
- Referring to the Quilt Diagram, arrange the blocks into 6 rows of 6 blocks in each row. Rotate the blocks as shown to make the overall design, or arrange the blocks as you desire. Once you are satisfied with your design, join the blocks into rows. Join the rows.



# Urban Textures Quilt

## Finishing the Quilt

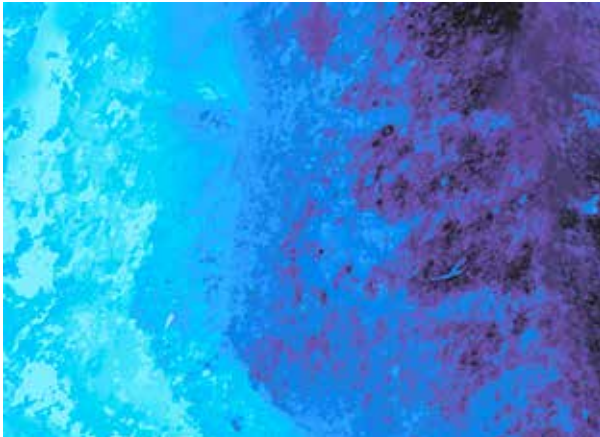
5. Layer the quilt with batting and backing and baste. The quilting is mostly vertical lines spaced  $\frac{1}{2}$ " apart. Some blocks have quilting that is  $\frac{1}{4}$ " or  $\frac{1}{8}$ " apart; some lines are quilted horizontally. The quilting lines are in different colors, metallic, and black. This is where you can add your own style to the quilt. Experiment with using fancy threads and couching with metallic thread or satin cord. Bind to finish the quilt.



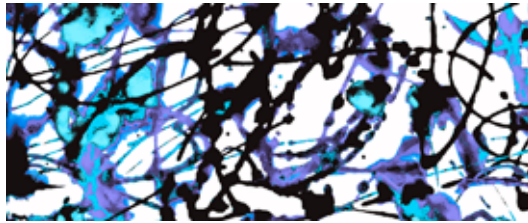
Quilt Diagram

# Urban Textures

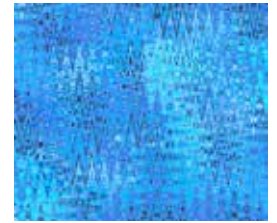
FABRICS BY SAQA



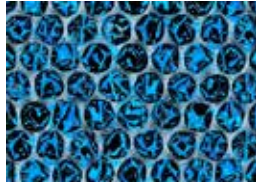
7476-B\*



7477-B



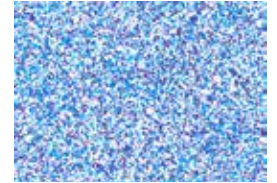
7478-B



7479-B\*



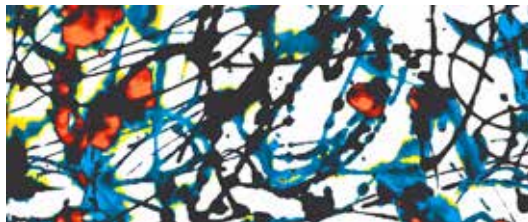
7482-B



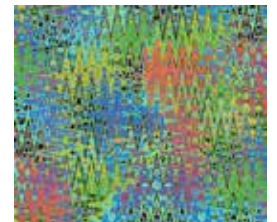
7483-B



7476-K



7477-K\*



7478-K



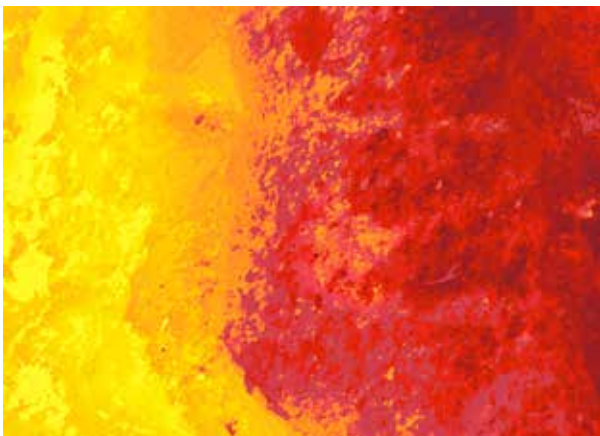
7479-K



7482-K\*



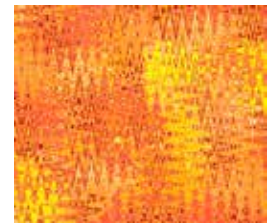
7483-K\*



7476-O\*



7477-O\*



7478-O\*



7479-O\*



7482-O\*



7483-O

Blend with  
fabrics from  
Andover Solids



A-T-White Lies\*



A-T-Magnum\*

All fabrics are used in quilt pattern.  
Fabrics shown are 15% of actual size.

andover



makower uk  
*The Henley Studio*

Free Pattern Download Available

1384 Broadway New York, NY 10018  
Tel. (800) 223-5678 • andoverfabrics.com