

Tuxedo

KIM SCHAEFER



100
years



Art 101 Quilt designed by: **Kim Schaefer** • Quilt Size: **52" x 72"**
Skill Level: **Beginner** • andoverfabrics.com

andover

•
•
• makower.uk
•

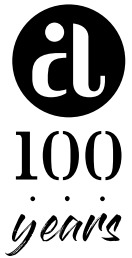
Free Pattern Download Available

1384 Broadway New York, NY 10018
Tel. (800) 223-5678 • andoverfabrics.com

Art 101 Quilt

Introducing Andover Fabrics new collection: **TUXEDO** by Kim Schaefer

Art 101 Quilt designed by Kim Schaefer



Quilt finishes 52" x 72"
58 Black Blocks: 4" x 4"
176 White Blocks: 4" x 4"

What's black and white and colorful all over? This contemporary throw-size quilt is! And what a snap to make, too. The multiple bright prints are applied to each black or white square with machine stitching. What could be easier?

Cutting Directions

Note: Read assembly directions before cutting patches. All measurements are cut sizes and include 1/4" seam allowances. A fat 1/8 is a 9" x 20"-22" cut of fabric. A fat 1/4 is an 18" x 20"-22" cut. WOF designates the width of fabric from selvedge to selvedge (approximately 42" wide).

8 Black From each:
Cut 7-8 squares 4 1/2" x 4 1/2" (58 total)

8 White From each:
Cut 22 squares 4 1/2" x 4 1/2" (176 total)

74 Bright From each:
Cut 3-4 squares 2" x 2" (234 total)
Read Step 1 before cutting

Binding Cut (7) strips 2 1/2" x WOF for binding

Backing Cut (2) panels 40" x 60", pieced to fit quilt top with overlap on all sides

Fabric Requirements

		Yardage		Fabric
8 Black	blocks	Fat 1/4 yard each		
	9622 K	9623 K	9624 K	9625 K
	9626 K	9627 K	9628 K	9629 K
8 White	blocks	1/2 yard each		
	9622 L	9623 L	9624 L	9625 L
	9626 L	9627 L	9628 L	9629 L
74 Bright	blocks	1/2 yard		
	Aquarium, Aubergine, Bahama, BarnRose, Bluebell, Bordeaux, Brass, Bubble, Butter, ButternutSquash, Caribbean, Carrot, Chocolate, Cloud, CoralSunset, Denim, Dawn, Earth, Faded, Flax, Ginger, GirlyGirl, Goldenrod, Guacamole, GuavaPunch, Gunmetal, Hunter, Icing, Isle, Ivory, Jade, Jalapeno, Jam, Lagoon, Leaf, Lilac, Mango, Margarita, Mulberry, Navy, Orchid, Papaya, Paprika, Passion, Peacock, Pear, Periwinkle, Pickle, PinkLemonade, Pistachio, Pool, Plum, PressedFlower, Raspberry, Red, Sage, Sailing, Saffron, Sapphire, Sky, Slipper, Smoke, Spice, Storm, Strawberry, Sunshine, Sulfur, Teal, Terracotta, Turquoise, Uniform, Water, Wine, Wisteria			
	Binding		1/2 yards	9627 K
	Backing		3 1/2 yards	9622 L

Making the Quilt

1. The bright 2" squares are cut with a zigzag edge. If you prefer to fuse the bright squares to the background black and white squares, press a lightweight fusible web to the wrong side of a 5" square of bright fabric. Cut 3-4 squares 2" x 2" from the bright 5" square. If using pinking shears, we suggest that you first cut the 2" squares with a regular rotary cutter, and then use pinking shears to cut the edges of each square. Or, use a specialty pinking or scallop rotary blade to cut the 2" squares needed from each bright solid. Repeat these steps with all the bright fabrics. Cut a total of 234 little squares.
2. Position a prepared 2" square in the center of a white or black 4 1/2" square. Fuse in place if you used the fusible web in Step 1. If not, pin the 2" square on a white or black square. Use a straight machine stitch to stitch the little square to the larger square, stitching just inside the pinked edge. Use contrasting, matching, or invisible thread, as you wish.
3. Refer to the Quilt Diagram for the following steps. Once you have stitched all 234 blocks, arrange 11 white blocks in each of 16 rows, being sure that the white prints are scattered so no print touches itself. Once you are satisfied with the arrangement, join the blocks in rows, and then join the rows.

- Join 16 black blocks to make a side border and sew to the side of the quilt. Repeat for the opposite side. Join 13 black blocks to make the top border. Sew to the quilt. Repeat for the bottom.

Finishing the Quilt

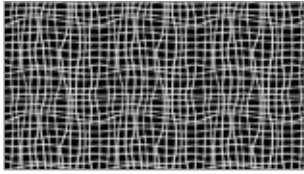
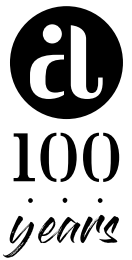
- Layer the quilt with batting and backing and baste. Quilt in the ditch around blocks. Bind to finish the quilt.



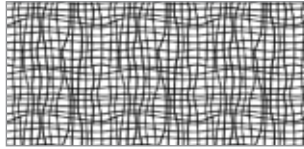
Quilt Diagram

Tuxedo

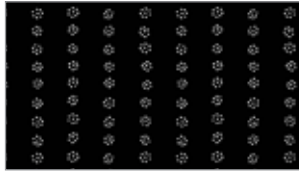
KIM SCHAEFER



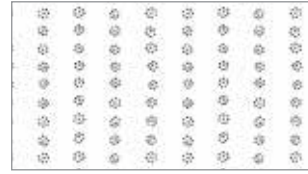
9622 K Fat ¼ yd



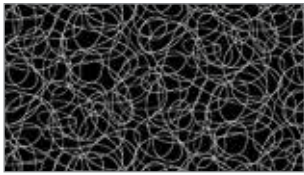
9622 L ½ yd
(plus 3½ yds for backing)



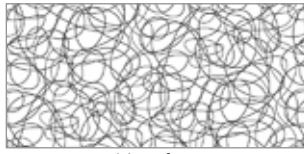
9623 K Fat ¼ yd



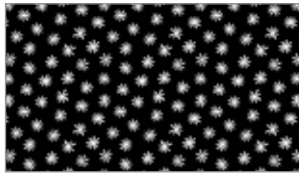
9623 L ½ yd



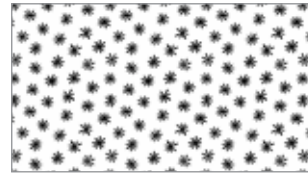
9624 K Fat ¼ yd



9624 L ½ yd



9625 K Fat ¼ yd



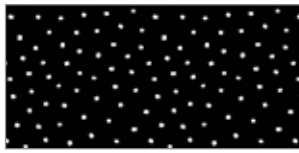
9625 L ½ yd



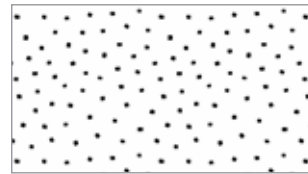
9626 K Fat ¼ yd



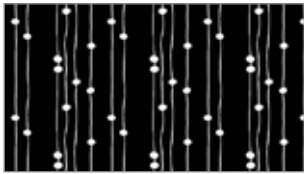
9626 L ½ yd



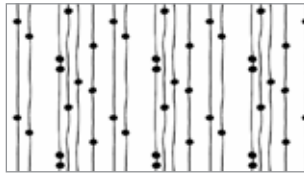
9627 K Fat ¼ yd
(plus ½ yd for binding)



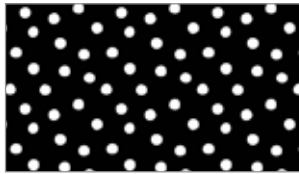
9627 L ½ yd



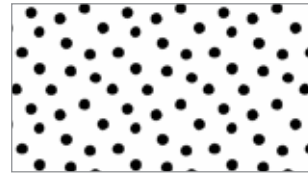
9628 K Fat ¼ yd



9628 L ½ yd



9629 K Fat ¼ yd



9629 L ½ yd

Additional fabric from CS-10 Century Solids by Andover Fabrics. Fat ⅛ yd each.



All fabrics are used in quilt pattern. Fabrics shown are 25% of actual size.