

Luminarias & Toasty Fabrics by Jo Morton



Grandma's House Quilt Designed and made by Candy Hargrove



makower uk®

1384 Broadway
New York, NY 10018
(800) 223-5678

www.andoverfabrics.com

Machine quilted by Maggi Honeyman

Finished size: 63" x 74"

2/5/11

Grandma's House Quilt

From *Luminarias* and *Toasty* fabrics by Jo Morton

Quilt designed and made by Candy Hargrove – machine quilted by Maggi Honeyman

Quilt finishes: 63" x 74"
120 blocks: 5½" x 5½"

Nothing says home like a classic log cabin quilt. Grandma would have loved putting together these rich earth tones with hints of deep blue and lavender. Cut the strips and sort them by patch number. Just grab a strip from the next pile and stitch production-line style – you'll have a great scrappy quilt in a snap. Grandma would be proud.

Fabric Requirements and Cutting

Note: Border measurements include 2" extra plus ¼" seam allowances. WOF designates the width of fabric from selvedge to selvedge (approximately 42" wide). A fat quarter is an 18" x 21" cut of fabric. A fat eighth is a 9" x 21" cut of fabric.

Yardage

5194-B ¾ cut (6) strips 2" x WOF, cut into (120) 2" squares for block centers (patch 1)

5191-B* 2 From the length of fabric, cut:
(2) borders 4½" x 68½"
(2) borders 4½" x 65½"
(4) 2½" strips x length of fabric for binding

Dark fabrics

Fat ¼ each:

5190-B 5190-N For the blocks, cut a total of:
5191-N 5192-B 120 (1½" x 2") strips for patch 2
5192-N 5193-B 120 (1½" x 3") strips for patch 3
5193-N 5194-N 120 (1½" x 4") strips for patch 6
120 (1½" x 5") strips for patch 7

Light fabrics

Fat ¼ 5190-LB

Fat ⅛ each:

5186-N 5199-L for the blocks, cut a total of:
5200-O 5188-N 120 (1½" x 3") strips for patch 4
5199-N 5200-R 120 (1½" x 4") strips for patch 5
5201-E 5201-K 120 (1½" x 5") strips for patch 8
5201-O 5202-N 120 (1½" x 6") strips for patch 9
5203-B 5204-L
5202-O 5203-Y
5204-N 5190-LN

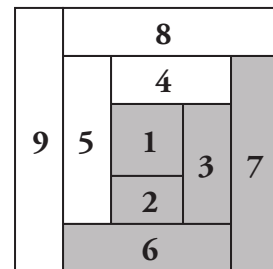
* includes binding

5201-E 4 Backing**

**Yardage needed for backing (4 yards or two panels 72" x WOF)

Assembly

1. Make the blocks. Cut the strips as listed in the cutting instructions and arrange them in piles by patch number. Referring to the block piecing diagram and selecting strips randomly, sew a patch 2 to a center patch 1. Press the seam allowance away from the center. Working in a counter-clockwise fashion, select strips at random and add them in numerical order, continuing to press the seam allowances away from the center of the block. Finally, add patch 9, this time pressing the seam allowance toward the center of the block. Make 120 blocks.



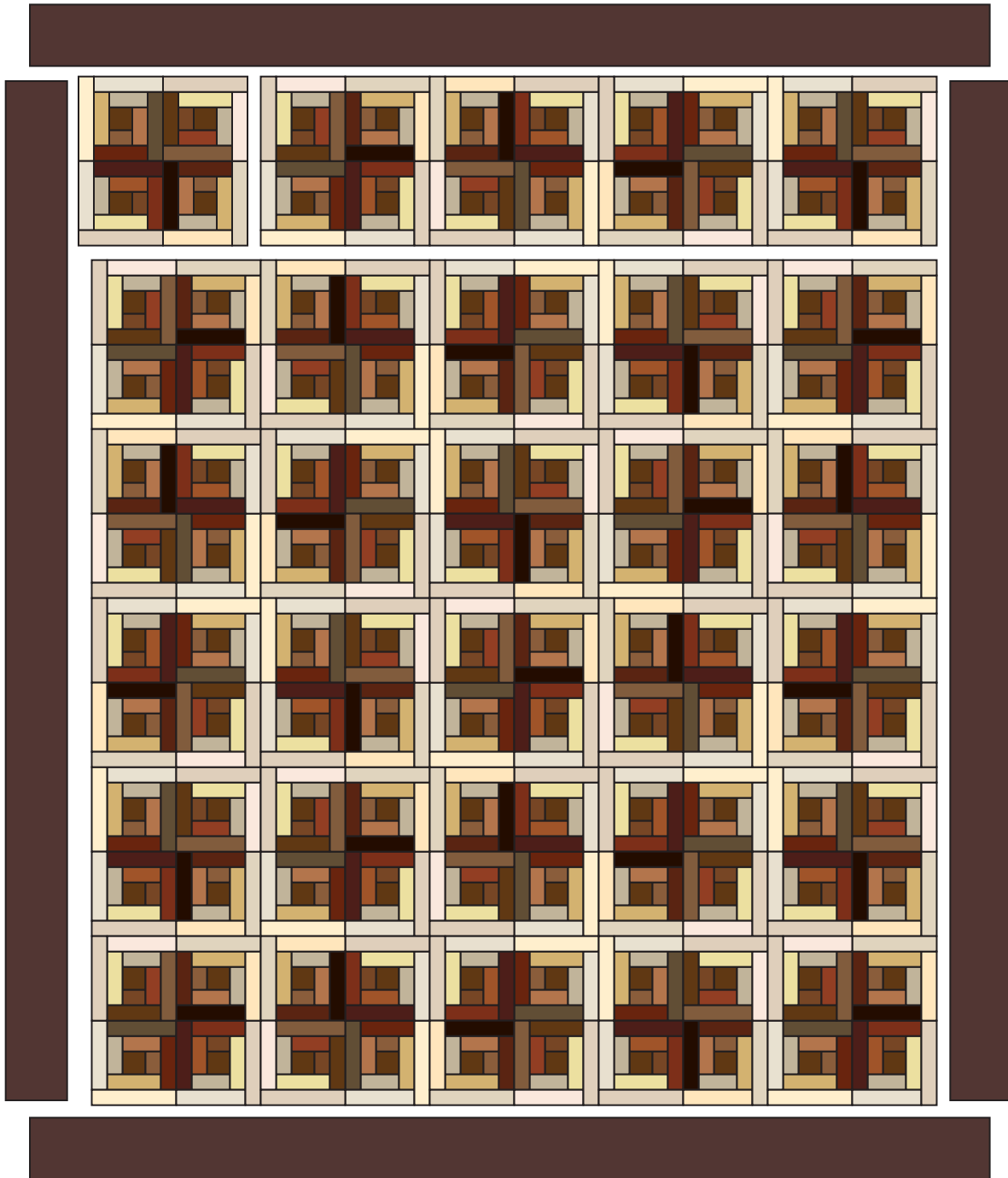
Block Diagram

2. On a design wall or flat surface, referring to the quilt assembly, arrange the blocks in sets of 4 with the dark portions of the blocks in the center. Join the blocks into sets.
3. Arrange the block sets into 6 rows of 5 sets each. Join the sets into rows. Join the rows.
4. Matching centers, sew the longer borders to the sides of the quilt. Trim excess fabric even with the top and bottom of the quilt. Similarly, sew the remaining borders to the top and bottom of the quilt. Trim excess fabric even with the sides of the quilt.

Grandma's House Quilt

Finishing

5. Join the 2 backing panels along the long edges and trim to fit the quilt with a 4" overlap. Layer the quilt top with batting and backing. Quilt in the ditch around the block patches. Quilt around the printed motifs in the borders or as desired.
6. Join the binding strips end to end with diagonal seams. Bind to finish the quilt.



Quilt Diagram

Grandma's House

From Luminarias and Toasty Fabrics by Jo Morton

Toasty



5186-N



5199-L



5200-O



5188-N



5199-N



5200-R



5201-E



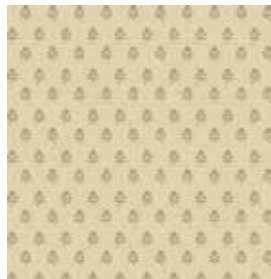
5201-K



5201-O



5202-N



5203-B



5204-L



5202-O



5203-Y



5204-N

Luminarias



5190-B



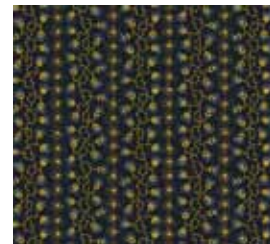
5190-LB



5190-LN



5190-N



5191-B



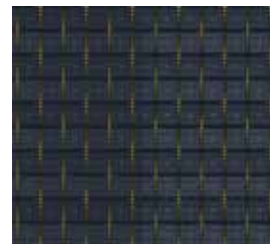
5191-N



5192-B



5192-N



5193-B



5193-N



5194-B



5194-N

All fabrics used in quilt pattern. Fabrics shown are 25% of actual size.
 Free Pattern Download Available at www.andoverfabrics.com