

The Very Hungry Caterpillar

FABRICS BY ERIC CARLE, LLC



Shown with alternative center panel



Yummy Fruit Quilt Design:
Vanilla Latte Quilts
Quilt Size: 36" x 48"
andoverfabrics.com

andover



makower uk
The Henley Studio

Free Pattern Download Available

1384 Broadway New York, NY 10018
Tel. (800) 223-5678 • andoverfabrics.com

Yummy Fruit Quilt



Introducing Andover Fabrics new collection: **The Very Hungry Caterpillar** by Eric Carle, LLC
Quilt designed by Vanilla Latte Quilts

Quilt finishes 36" x 48"

The caterpillar that eats its way to becoming a butterfly is at the heart of Eric Carle's beloved book, as well as this charming group of fabric prints. Simple piecing frames the central panel. Choose a novelty print for the middle, or piece large-scaled motifs for the focal point.

Fabric Requirements

		Yardage	Fabric
Fabric A	setting	1½ yards	3472-M
Fabric B	pieced strips	¼ yard	3474-M
Fabric C	binding	½ yard	3476-Y
*Fabric D	setting	*¾ yard	*7233-X
Fabric E	setting	¼ yard	7237-XR
Four ⅛ yd. Prints			
	pieced strips	¼ yard ea.	3476-G, 3476-P, 3477-B, 3477-R
Two ⅛ yd. Prints			
	setting	¼ yard ea.	3475-G, 3475-Y
Two ¼ yd. Prints			
	setting	¼ yard	7237-XB, 7237-XG
Backing		1½ yards	5281-M

*Fabric D: If using the large-scale print 3471-M, you need 1 panel (¾ yard). The panel takes the place of 7233-X.

Cutting Directions

Note: Read assembly directions before cutting patches. All measurements are cut sizes and include ¼" seam allowances. Strips are cut the exact lengths required plus ¼" seam allowances. WOF designates the width of fabric from selvedge to selvedge (approximately 42" wide).

Fabric A Fussy-cut (2) strips 3½" x 48½"

Fabric B Cut (7) rectangles 3½" x 5½"

Fabric C Cut (5) strips 2½" x WOF for binding
Cut (5) rectangles 3½" x 5½"

Fabric D Cut (1) rectangle 10" x 48½" *OR Cut (1) panel (3471-M) as follows:
Cut butterfly 10" x 20"
Cut leaf 10" x 12"
Cut caterpillar 10" x 12½"
Cut (2) rectangles 1½" x 10" from surrounding dot fabric
Cut (2) rectangles 2" x 10" from surrounding dot fabric

Fabric E Cut (3) strips 1½" x WOF, pieced to make (2) strips 1½" x 48½" each

Four ⅛ yds. From each:
Cut (5) rectangles 3½" x 5½"

Two ⅛ yds. From each:
Cut (2) strips 2" x WOF, pieced to make (1) strip 2" x 48½"

Two ¼ yds. From each:
Cut (2) strips ¾" x WOF, pieced to make (1) strip ¾" x 48½"

Backing Cut (1) panel 42" x 54"

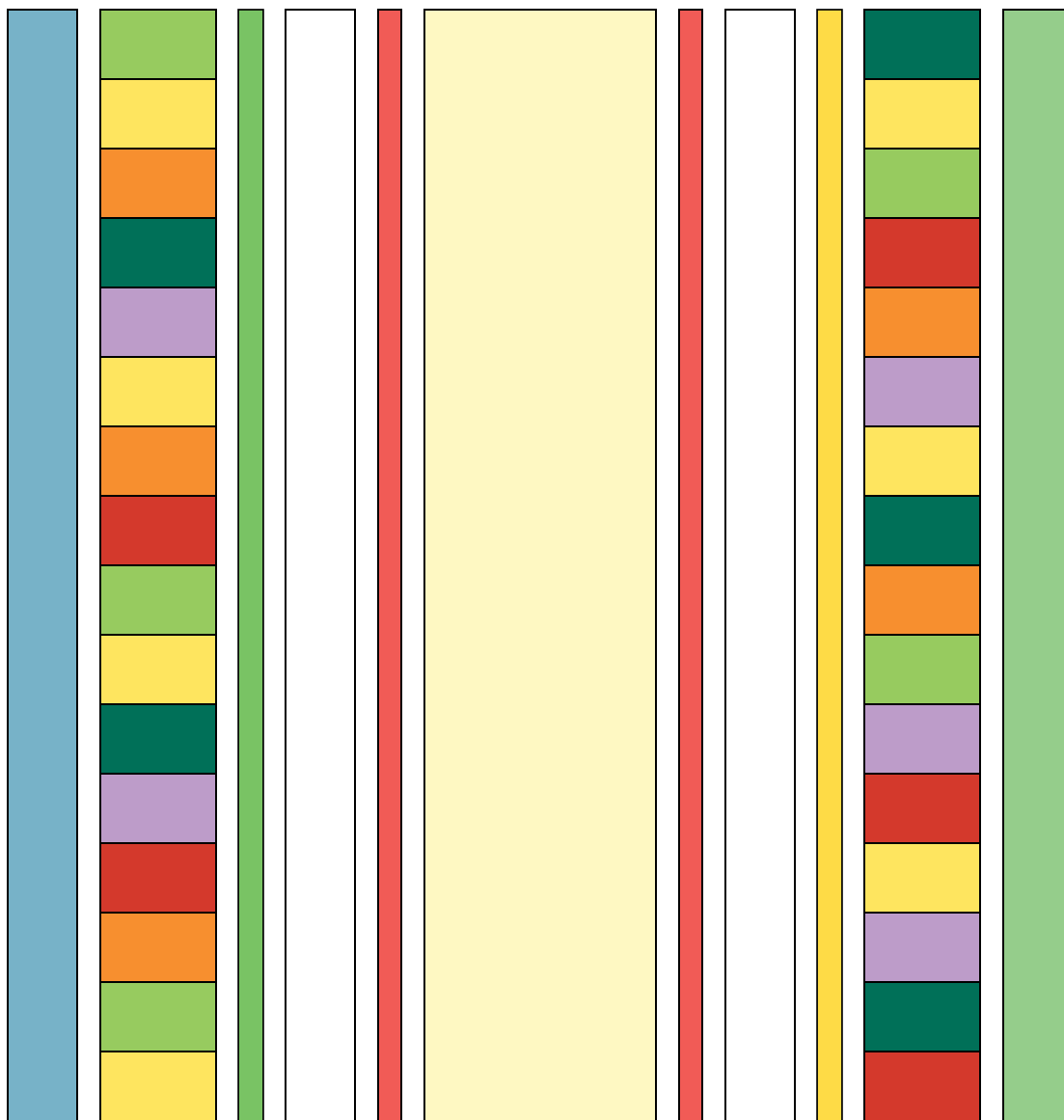
Yummy Fruit Quilt

Making the Quilt

1. Refer to the Quilt Diagram for all the steps. Join 16 rectangles $3\frac{1}{2}'' \times 5\frac{1}{2}''$ along the long edges to make a vertical pieced strip, following the diagram for color placement or as you wish. Repeat to make a second pieced strip. Set aside.
2. Cut the Fabric D rectangle, or if you are using the Fabric 3471-M panel, sew the $2'' \times 10''$ dotted fabric strips to short sides of the butterfly print. Sew the leaf to one end and the caterpillar to the other end. Sew $1\frac{1}{2}'' \times 10''$ dotted fabric strips to the ends to make the center pieced panel.
3. Sew fabric strips to opposite sides of the center panel in this order: Fabric E strips, Fabric A strips, $2'' \times 48\frac{1}{2}''$ strips, pieced strips from Step 1, and finally, the $3\frac{1}{4}'' \times 48\frac{1}{2}''$ strips.

Finishing the Quilt

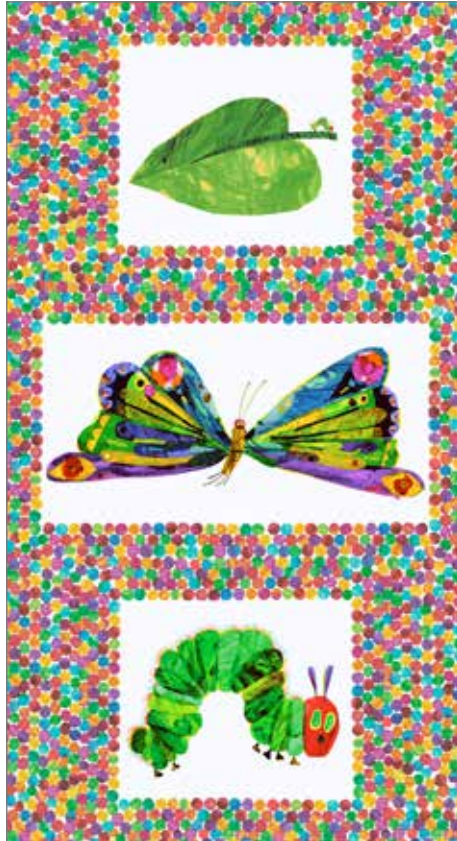
4. Layer the quilt with batting and backing and baste. Quilt in the ditch around strips and patches. Quilt around the printed motifs as desired. Bind to finish the quilt.



Quilt Diagram



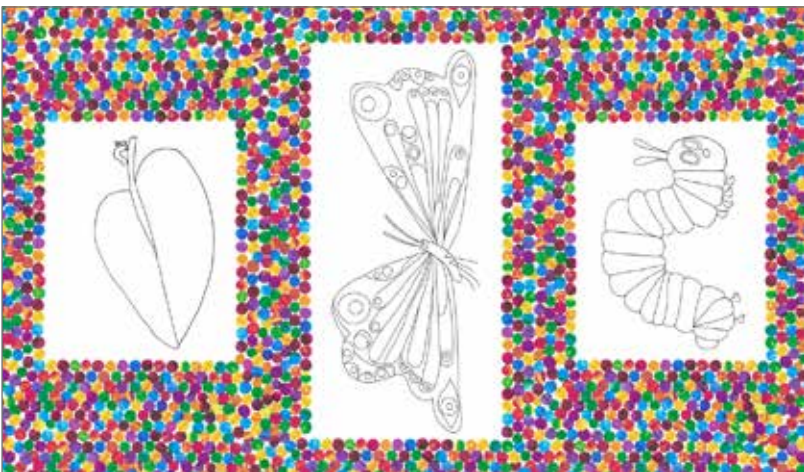
3472-M 1½ yds



*Second version: 3471-M
1 panel (⅔ yd) in place of 7233-X



5280-M



5626-M



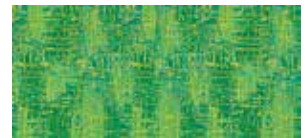
3476-G ⅛ yd



3477-B ⅛ yd



3476-P ⅛ yd



3477-G



3476-Y ½ yd
(includes binding)



3477-R ⅛ yd

The Very Hungry Caterpillar

FABRICS © ERIC CARLE, LLC

andover : makower uk
The Henley Studio



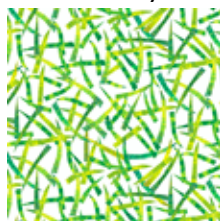
7232-X



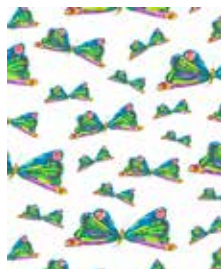
*7233-X ¼ yd



7237-XB ¼ yd



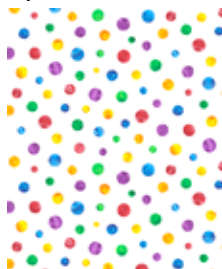
7237-XG ¼ yd



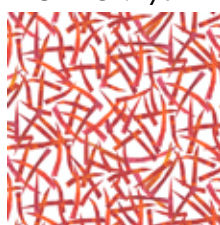
7234-X



7235-X



7236-X



7237-XR ¼ yd

FABRIC	10 KITS	20 KITS	30 KITS
3472-M	1	2	3
*7233-X	1	1	2
*3471-M	1	1	2
* in place of 7233-X in second version			
FROM EACH	1	1	1
3474-M	3475-G	3475-Y	3476-G
3476-P	3476-Y	3477-B	3477-R
7237-XB	7237-XG	7237-XR	

BACKING

*5281-M	1	2	3
---------	---	---	---

Yards needed for backing: **1½ YDS per kit**



5281-M 1½ yds (backing)



5282-M



3475-B Fat ⅛ yd



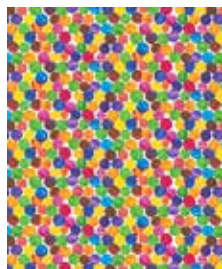
3475-G ⅛ yd



5283-M



3473-G
Also available in
flannel: F3473-G



3474-M ⅛ yd
Also available in
flannel: F3474-M



3475-Y ⅛ yd

Bolts needed to cut project kits.

15 yds = 1 bolt

Fabrics shown are 10% of actual size.

Fabrics used in quilt pattern are shown in black.

The Very Hungry Caterpillar

FABRICS © ERIC CARLE, LLC

andover : makower uk
The Henley Studio