

Star Spangled

ANDOVER FABRICS



100
years



Salute to the Stars Quilt designed by: **Janet Houts** • Quilt Size: **62" x 74"**

Skill Level: Intermediate • andoverfabrics.com

andover

•
•
• makower.uk
•

Free Pattern Download Available

1384 Broadway New York, NY 10018
Tel. (800) 223-5678 • andoverfabrics.com

5/15/21

Salute to the Stars Quilt

Introducing Andover Fabrics new collection: **STAR SPANGLED** by Andover Fabrics

Quilt designed by Janet Houts



Quilt finishes 62" x 74"

10 Block Y: 12" x 12"

10 Block Z: 12" x 12"

Display your love of country and freedom with this patriotic throw that is chock-full of star prints. The two-block design uses easy piecing methods.

Cutting Directions

Note: Read assembly directions before cutting patches. All measurements are cut sizes and include ¼" seam allowances. A fat ¼ is a 9" x 20"-22" cut of fabric. The mitered borders include extra length for insurance. WOF designates the width of fabric from selvedge to selvedge (approximately 42" wide).

Fabric A

Cut (20) squares 5½", cut in half diagonally to make 40 half-square triangles
Cut (40) rectangles 2" x 3½"
Cut (40) squares 2"

Fabric B

Cut (6) strips 1½" x WOF, pieced to make the following:
(2) borders 1½" x 64½"
(2) borders 1½" x 52½"

Fabric C

Cut (2) borders 6½" x 76½", cut lengthwise
Cut (2) borders 6½" x 64½", cut lengthwise
Cut (5) squares 3½" for Block X centers

Fabric D

Cut (5) squares 3½" for Block Y Centers

Fabric E

Cut (40) squares 2" for Flying Geese

Fabric F

Cut (40) squares 2" for Flying Geese

Fabric Requirements

		Yardage	Fabric
Fabric A	blocks	1 yard	9938 L
Fabric B	border	¾ yard	9940 R
Fabric C	border	2¼ yards	9941 B
Fabric D	blocks	fat ¼ yard	9941 R
Fabric E	blocks	fat ¼ yard	9942 B
Fabric F	blocks	fat ¼ yard	9942 R
Fabric G	blocks	½ yard	9943 B
Fabric H	blocks	½ yard	9943 R
4 Prints	blocks	½ yard each	
	9944 B	9944 L *9945 B	9945 R
Binding		⅝ yard	*9945 B
Backing		4 yards	9938 RL

Fabric G

Cut (10) squares 7" (or 6⅞"), cut in half diagonally to make 20 half-square triangles
(Read Step 1 before cutting)

Fabric H

Cut (10) squares 7" (or 6⅞"), cut in half diagonally to make 20 half-square triangles
(Read Step 1 before cutting)

4 Prints

 From each:

Cut (10) squares 7" (or 6⅞"), cut in half diagonally to make 20 half-square triangles (80 triangles total)
(Read Step 1 before cutting)

Binding

Cut (7) strips 2½" x WOF for binding

Backing

Cut (2) panels 41" x 70", pieced to fit quilt top with overlap on all sides

Making the Quilt

1. The 7" squares for the blocks are cut slightly larger for insurance, and to allow the blocks to be trimmed to an exact 12½" square. If you prefer, cut the squares a precise 6⅞" if you do not want to trim later.

2. Flying Geese: Draw a diagonal line on the wrong side of each Fabric E and Fabric F 2" square. Place a marked square on one end of a Fabric A 2" x 3½" rectangle, right sides together. Sew on the marked line; trim away and discard excess fabric (Diagram 1). Press open. Repeat this process on the opposite end of the rectangle (Diagram 2) to make a Flying Geese Unit. Make 20 with Fabric E and 20 with Fabric F.

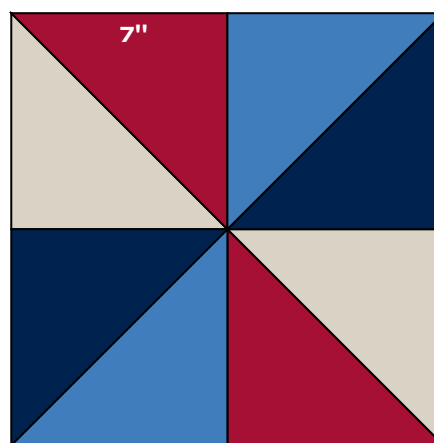
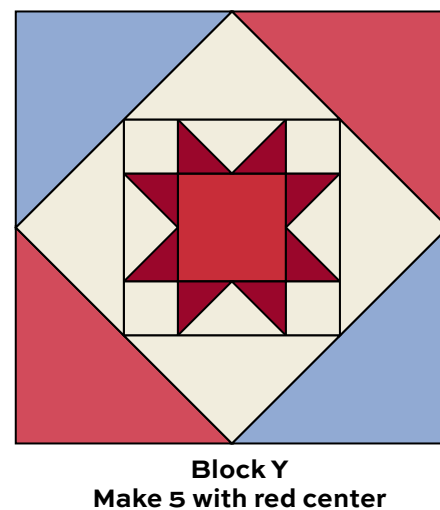
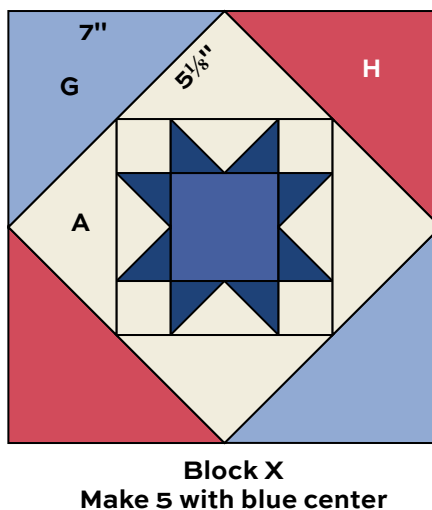
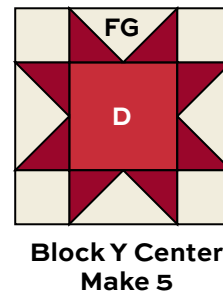
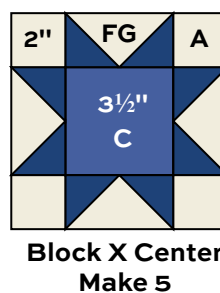
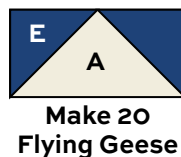
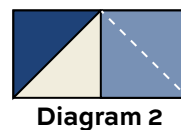
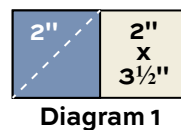
3. Referring to the Block X and Block Y center diagrams, arrange 2 Flying Geese units with 4 Fabric A 2" squares and 1 Fabric C or D 3½" square into 3 rows. Join the patches into rows, and then join the rows. The star should measure 6½" square. Make 5 of each star block center.

4. Referring to the Block X and Block Y diagrams, sew a Fabric A 5⅞" half-square triangle to each side of a star center. Press seam allowances away from the star. Sew 2 Fabric G and 2 Fabric H triangles to the star as shown. Trim the block to 12½" square if needed. Make 5 Block X and 5 Block Y.

5. To make each Block Z, join the 7" (or 6⅞") half-square triangles cut from the 4 prints to make 4 pieced squares as shown. Join the squares into 2 rows, and then join the rows. Trim to 12½" if needed. Make 10 Block Z.

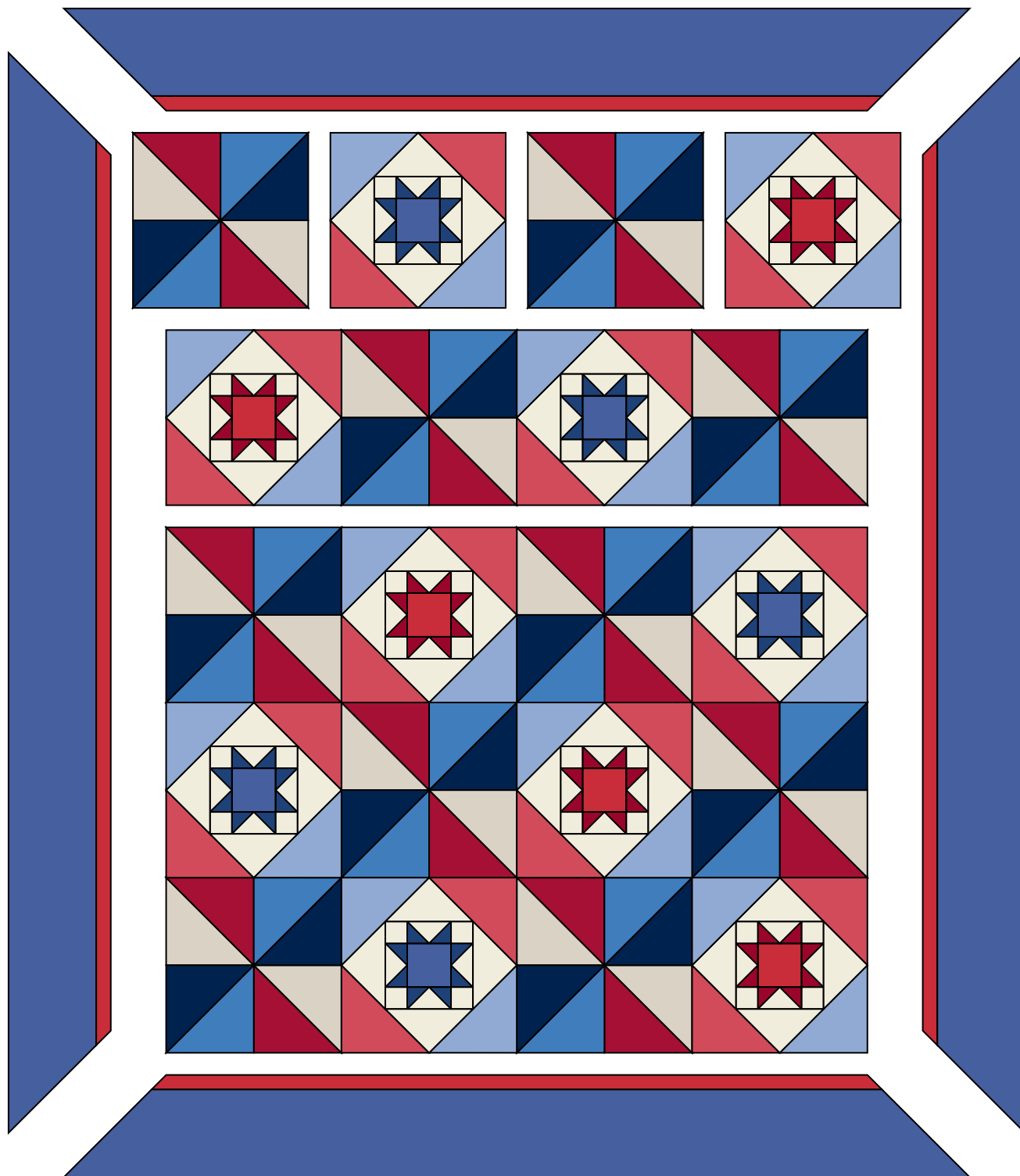
6. Referring to the Quilt Diagram, arrange 1 Block X, 1 Block Y, and 2 Block Z in each of 5 horizontal rows. Note placement and rotation of each block. Looking through a camera or the wrong end of binoculars may help you find mistakes. Once you are satisfied with the arrangement, join the blocks in rows, and then join the rows.

7. Join Fabric B and Fabric C borders to make 4 pieced borders. Sew the borders to the quilt, starting and stopping stitching ¼" from the quilt's raw edge. Miter the corners and trim the excess.



Finishing the Quilt

8. Layer the quilt with batting and backing and baste. Quilt in the ditch around borders and block patches. Fill in the background around the stars with “stipple” quilting or echo quilting. Quilt the outer border as desired. Or, quilt an overall design. Bind to finish the quilt.



Quilt Diagram

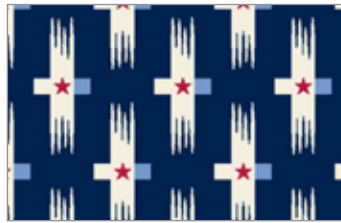
Star Spangled

ANDOVER FABRICS

a
100
years



9938 B



9939 B



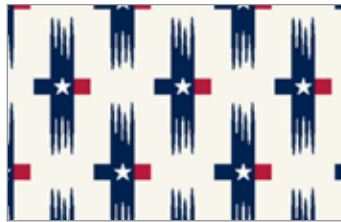
9940 B



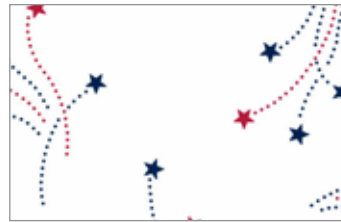
9941 B*



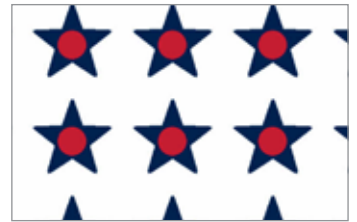
9938 L*



9939 L



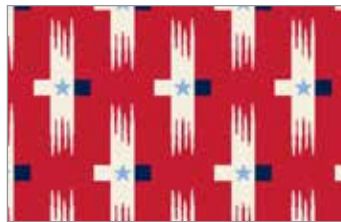
9940 L



9941 L



9938 RL*



9939 R



9940 R*



9941 R*



9942 B*



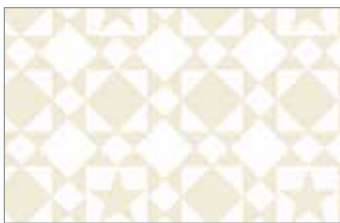
9943 B*



9944 B*



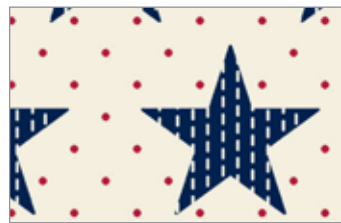
9945 B*



9942 L



9943 L



9944 L*



9945 L



9942 R*



9943 R*



9944 R



9945 R*

*Indicates fabrics used in quilt pattern. Fabrics shown are 100% of actual size.

andover : makower uk

Free Pattern Download Available

1384 Broadway New York, NY 10018
Tel. (800) 223-5678 • andoverfabrics.com