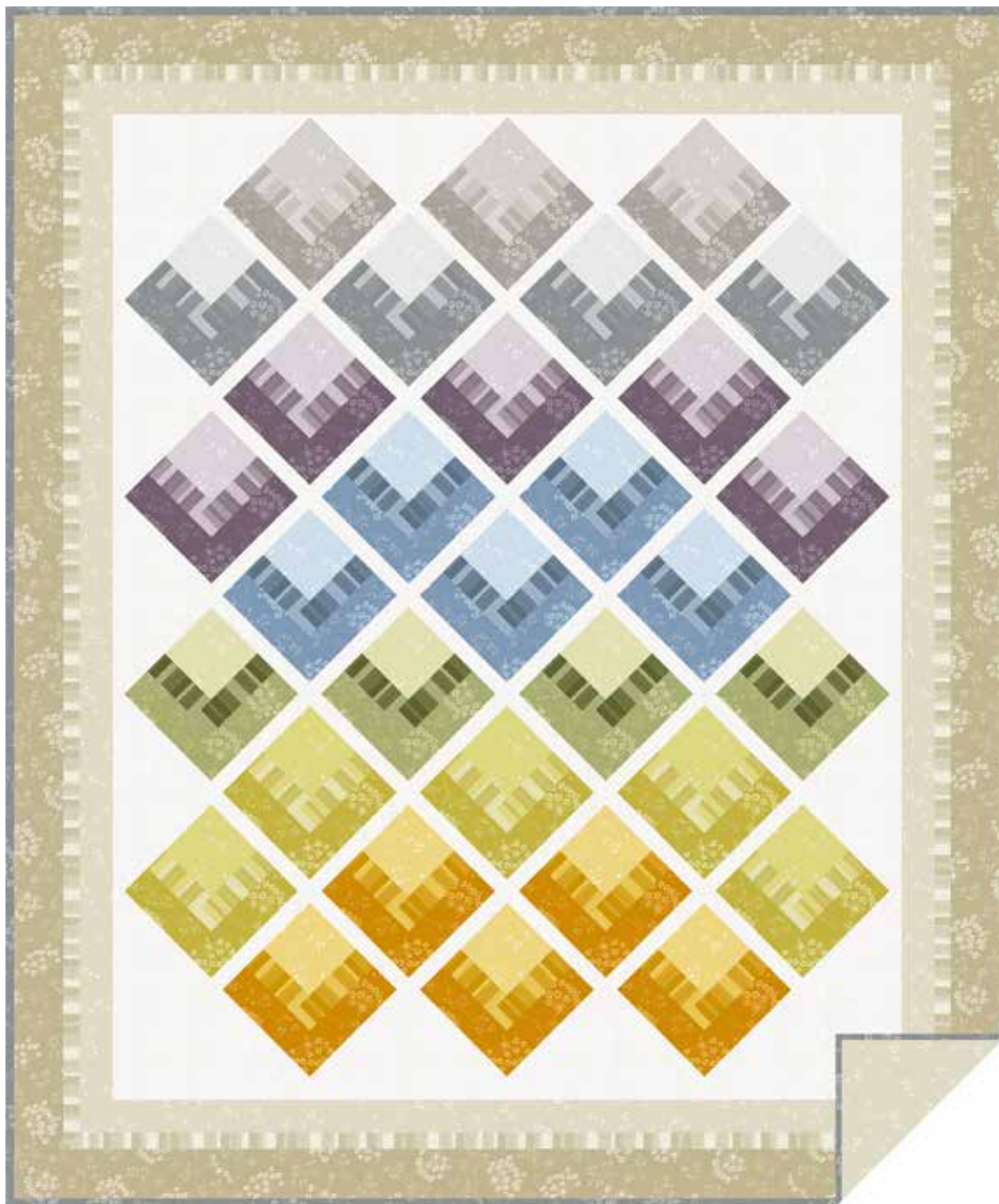


Solstice

ANDOVER FABRICS

a
100
years



Turning Point Quilt designed by: **Janet Houts** • Quilt Size: **60" x 72"**

Skill Level: **Advanced Beginner** • andoverfabrics.com

andover

•
•
• makower.uk
•

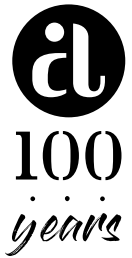
Free Pattern Download Available

1384 Broadway New York, NY 10018
Tel. (800) 223-5678 • andoverfabrics.com

Turning Point Quilt

Introducing Andover Fabrics new collection: **SOLSTICE** by Andover Fabrics

Quilt designed by Janet Houts



Quilt finishes 60" x 72"

31 Blocks: 8½" x 8½"

Soft mid-summer hues made in subtle stripes and floral prints augment this throw-size quilt. The off-center Log Cabin blocks are quick and easy to construct, and the on-point setting adds a contemporary vibe.

Cutting Directions

Note: Read assembly directions before cutting patches. All measurements are cut sizes and include ¼" seam allowances. A fat ⅛ is a 9" x 20"-22" cut of fabric. A fat ¼ is an 18" x 20"-22" cut. Borders are cut the exact lengths required plus ¼" seam allowances.

Fabric A5 From each: Cut (5) squares 4½"

Fabric A4 From each: Cut (4) squares 4½"

Fabric A3 Cut (3) squares 4½"

Fabric B5 From each:
Cut (5) strips 2" x 6"
Cut (5) strips 2" x 4½"

Fabric B4 From each:
Cut (4) strips 2" x 6"
Cut (4) strips 2" x 4½"

Fabric B3 Cut (3) strips 2" x 6"
Cut (3) strips 2" x 4½"

Fabric C5 From each:
Cut (5) strips 2½" x 8"
Cut (5) strips 2½" x 6"

Fabric C4 Cut (4) strips 2½" x 8"
Cut (4) strips 2½" x 6"

Fabric C3 Cut (3) strips 2½" x 8"
Cut (3) strips 2½" x 6"

Fabric D Cut (6) strips 2½" x WOF, pieced to make the following:
(2) side borders 2½" x 60½"
(2) top/bottom borders 2½" x 52½"

Fabric E Cut (6) strips 1½" x WOF, pieced to make the following:
(2) side borders 1½" x 64½"
(2) t/b borders 1½" x 54½"

Fabric Requirements

Note: Some fabric designations indicate how many blocks are made with that fabric.

		Yardage	Fabric
Fabric A5	blocks	fat ¼ yard	
9443-B	9443-O	9443-P	9443-Y1
Fabric A4	blocks	fat ⅛ yard ea.	
9443-C	9443-G		
Fabric A3	blocks	fat ⅛ yard	9443-L
Fabric B5	blocks	fat ⅛ yard ea.	
9542-B	9542-O	9542-P	9542-Y
Fabric B4	blocks	fat ⅛ yard ea.	
9542-C	9542-G		
Fabric B3	blocks	fat ⅛ yard	9542-L
Fabric C5	blocks	fat ¼ yard ea.	
9543-B	9543-O	9543-P	9543-Y
Fabric C4	blocks	fat ⅛ yard	9543-G
Fabric C3	blocks	fat ⅛ yard	9543-L
Fabric D	border	½ yard	*9443-N
Fabric E	border	⅜ yard	9542-N
Fabric F	border	¾ yard	9543-N
Fabric G	binding	¾ yard	9543-C
Fabric H	setting	1½ yards	1867-WW
Backing		4 yards	*9443-N

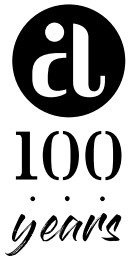
Fabric F Cut (7) strips 3½" x WOF, pieced to make the following:
(2) side borders 3½" x 66½"
(2) t/b borders 3½" x 60½"

Fabric G Cut (7) strips 2½" x WOF for binding
Cut (4) strips 2½" x 8"
Cut (4) strips 2½" x 6"

Fabric H Cut (3) squares 13½", cut in half diagonally twice to make 12 quarter-square triangles (2 will not be used)
Cut (2) squares 13" x 13", cut in half diagonally to make 4 half-square triangles for corners
Cut (31) strips 1½" x 9" for blocks
Cut (31) strips 1½" x 8" for blocks

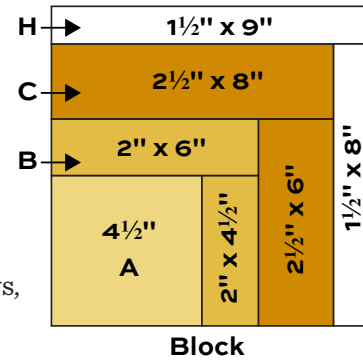
Backing Cut (2) panels 40" x 68", pieced to fit quilt top with overlap on all sides

Turning Point Quilt



Making the Quilt

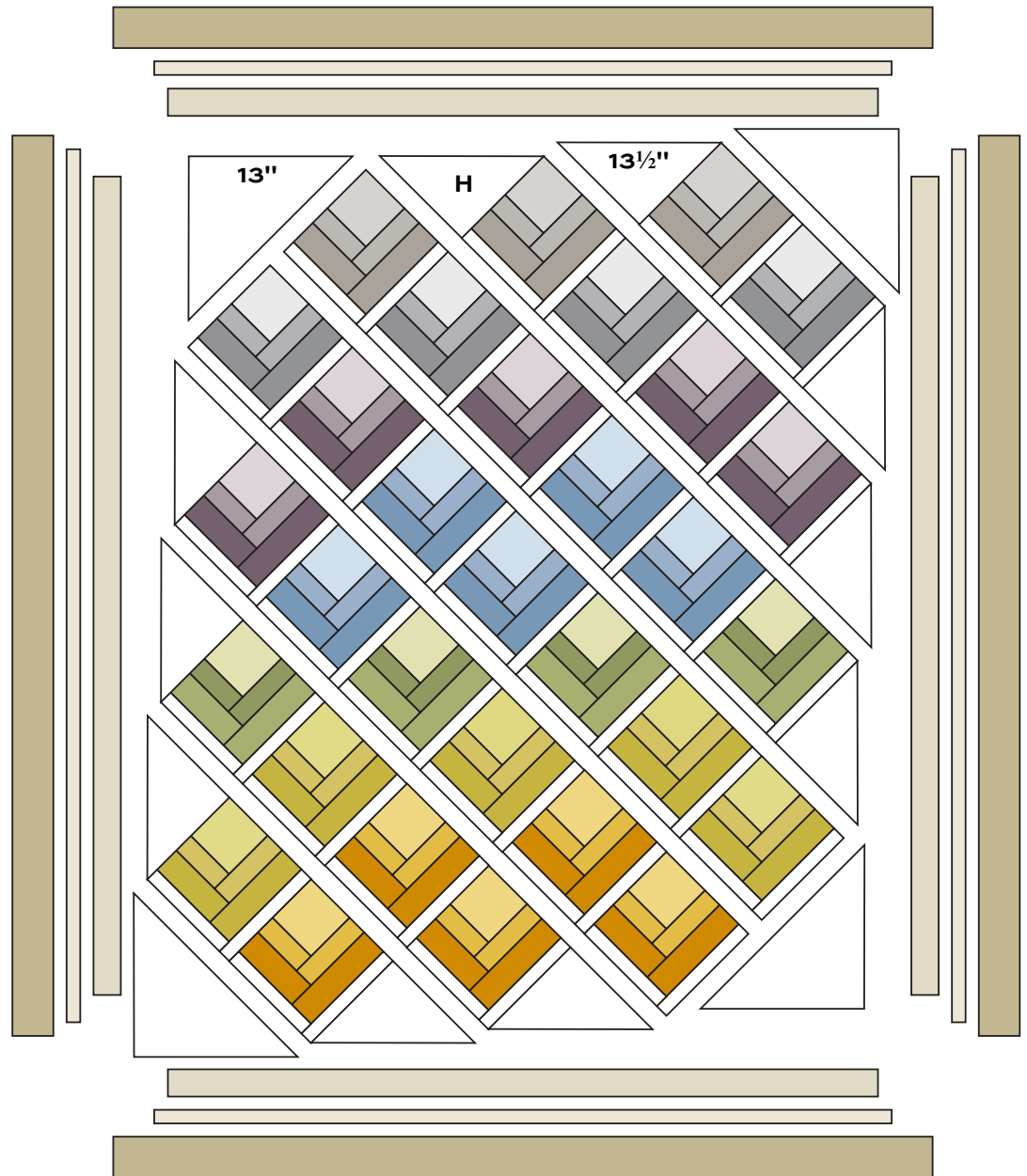
1. Referring to the quilt photograph, arrange the B and C strips around each A square, combining fabrics by color families as indicated. Sew strips to the sides of Fabric A squares in the order shown. Join H strips to the block. Make 31 blocks.
2. Referring to the Quilt Diagram, arrange the blocks and Fabric H quarter-square triangles in diagonal rows on a flat surface or design wall. Once you are satisfied by the arrangement, join the blocks in rows, and then join the rows. Sew a Fabric H half-square triangle to each corner. If needed, trim the Fabric H patches, leaving a $\frac{1}{4}$ " seam allowance beyond the corners of the blocks at the outer edges.



3. Join Fabric D borders to the quilt, sides on first. Repeat to add Fabric E borders, and then F borders.

Finishing the Quilt

4. Layer the quilt with batting and backing and baste. Quilt in the ditch around borders and block patches. Quilt A and H patches as desired. Bind to finish the quilt.



Quilt Diagram

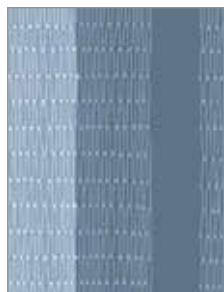
Solstice

ANDOVER FABRICS

a
100
years



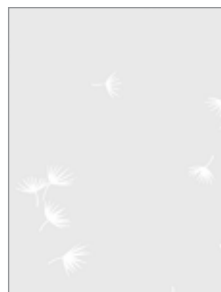
9443-B



9542-B



9543-B



9443-C



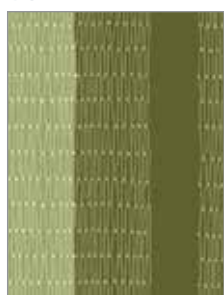
9542-C



9543-C



9443-G



9542-G



9543-G



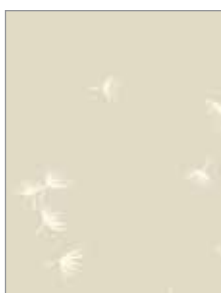
9443-L



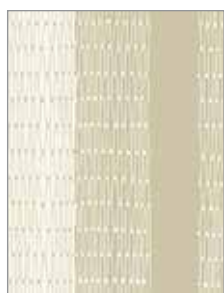
9542-L



9543-L



9443-N



9542-N



9543-N



9443-O



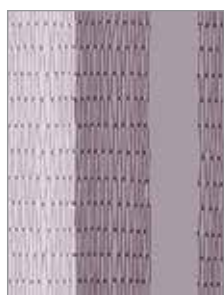
9542-O



9543-O



9443-P



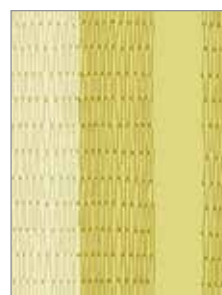
9542-P



9543-P



9443-Y1



9542-Y



9543-Y



1867-WW

*Additional fabric
from Dimples
by Gail Kessler*

All fabrics are used in quilt pattern.
Fabrics shown are 50% of actual size.

Free Pattern Download Available

andover : makower uk

1384 Broadway New York, NY 10018
Tel. (800) 223-5678 • andoverfabrics.com