

Savannah

ANDOVER FABRICS



Diamond Path

Quilt designed by:
Heidi Pridemore

Quilt Size: 69 1/2" x 84 1/4"

andoverfabrics.com

About Savannah

This collection, Savannah, is influenced by the English Regency style popular in the late 1800's throughout the iconic homes of Savannah, Georgia. Residences of this period were decorated with rich textiles, centered on balance and symmetry. Interior decorators are still influenced by this style today.

andover • makower.uk

Free Pattern Download Available

1384 Broadway New York, NY 10018
Tel. (800) 223-5678 • andoverfabrics.com

Diamond Path



Featuring Andover's new Collection: Savannah

Quilt designed by Heidi Pridemore of The Whimsical Workshop

Quilt finished 69 1/2" x 84 1/2"

Cutting Directions

Note: Read assembly directions before cutting patches. Borders are cut to exact length required plus 1/4" seam allowance. WOF designates the width of fabric from selvedge to selvedge (approximately 42" wide).

Fabric A	Fussy cut (5) 3 1/2" x 44 Length of Fabric (LOF) strips.
Fabric B	Cut (5) 3 1/2" x WOF strips.
Fabric C	Cut (5) 2 3/4" x WOF strips.
Fabric D	Cut (5) 3 1/2" x WOF strips.
Fabric E	Cut (5) 3 1/2" x WOF strips.
Fabric F	Cut (5) 2 3/4" x WOF strips.
Fabric G	Cut (5) 3 1/2" x WOF strips. Cut (5) 1 1/2" x WOF strips. Sew the strips together end to end with diagonal seams and cut (2) 1 1/2" x 86" strips. Cut (4) 1 1/2" x WOF strips. Sew the strips together end to end with diagonal seams and cut (2) 1 1/2" x 71" strips.
Fabric H	Cut (5) 3 1/2" x WOF strips. Cut (4) 1 1/4" x WOF strips. Sew the strips together end to end with diagonal seams and cut (2) 1 1/4" x 78 1/2" strips. Cut (4) 1 1/4" x WOF strips. Sew the strips together end to end with diagonal seams and cut (2) 1 1/4" x 65" strips.
Fabric I	Cut (5) 2 3/4" x WOF strips.
Fabric J	Cut (4) 3 1/2" x WOF strips.
Fabric K	Cut (4) 3 1/2" x WOF strips.
Fabric L	Cut (4) 2 3/4" x WOF strips.

Fabric Requirements

		Yardage	Fabric
Fabric A	blocks	1 1/3 yards	9372-T
Fabric B	blocks	5/8 yard	9374-TL
Fabric C	blocks	1/2 yard	9371-KY
Fabric D	blocks	5/8 yard	9378-TL
Fabric E	blocks	5/8 yard	9373-TL
Fabric F	blocks	1/2 yard	9375-T
Fabric G	blocks, border	1 yard	9373-T
Fabric H	blocks, border	1 yard	9376-L
Fabric I	blocks	5/8 yard	9374-KY
Fabric J	blocks	1/2 yard	9378-T
Fabric K	blocks	1/2 yard	9374-YL
Fabric L	blocks	1/2 yard	9376-K
Fabric M	blocks	1 1/8 yards	9375-TL
Fabric N	blocks	2 1/2 yards	9372-KY
Fabric O	blocks	1 yard	9374-T
Fabric P	blocks	1 1/8 yards	9376-T
Fabric Q	blocks	1 1/8 yards	9373-KY
Fabric R	blocks	1 yard	9371-T
Fabric S	border	5/8 yard	9377-T
Fabric T	binding	2/3 yard	9377-K
Backing		5 1/4 yards	9371-T

Fabric M	Cut (10) 3 1/2" x WOF strips.
Fabric N	Cut (10) 3 1/2" x 44" LOF strips.
Fabric O	Cut (10) 2 3/4" x WOF strips.
Fabric P	Cut (10) 3 1/2" x WOF strips.
Fabric Q	Cut (10) 3 1/2" x WOF strips.
Fabric R	Cut (10) 2 3/4" x WOF strips.
Fabric S	Cut (5) 2" x WOF strips. Sew the strips together end to end with diagonal seams and cut (2) 2" x 89" strips. Cut (4) 2" x WOF strips. Sew the strips together end to end with diagonal seams and cut (2) 2" x 74" strips.
Fabric T	Cut (8) 2 1/2" x WOF strips for the binding.
Backing	Cut (2) 93" x WOF strips. Sew the strips together and trim to make (1) 78" x 93" backing.

Diamond Path

Making the Quilt

1. Block Assembly

Sew (1) 3 1/2" x 44" Fabric A strip, (1) 3 1/2" x WOF Fabric B strip and (1) 2 3/4" x WOF Fabric C strip together lengthwise and in that order to make (1) Strip Set One (Diagram 1). Repeat to make (5) Strip Set Ones total.

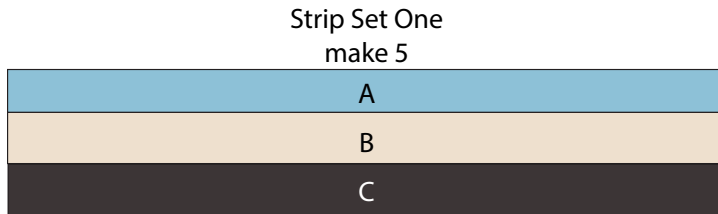


Diagram 1

2. Using Template 1, cut (18) Block One triangles from the Strip Set One strips (Diagram 2).

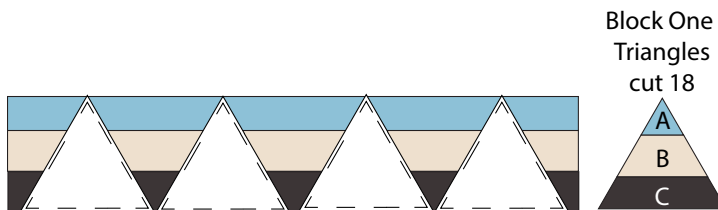


Diagram 2

3. Repeat Step 1-2 and refer to Diagrams 3-7 for fabric identification and placement to make (18) Block Two triangles, (18) Block Three triangles, (16) Block Four triangles, (40) Block Five triangles and (40) Block Six triangles.

Block Two
Triangles
make 5 strip sets
cut 18

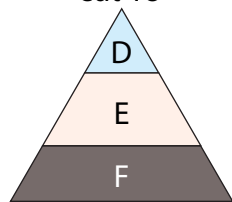


Diagram 3

Block Three
Triangles
make 5 strip sets
cut 18

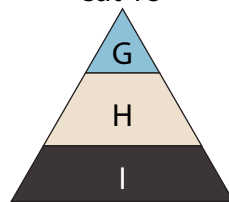


Diagram 4

Block Four
Triangles
make 4 strip sets
cut 16

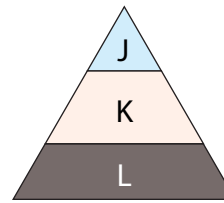


Diagram 5

Block Five
Triangles
make 10 strip sets
cut 40

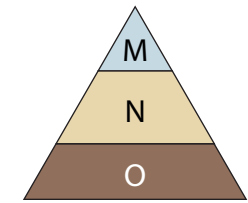


Diagram 6

Block Six
Triangles
make 10 strip sets
cut 40

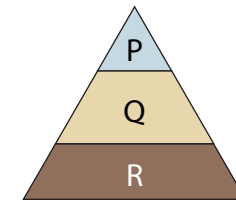


Diagram 7

4. Follow Diagram 8 on Page 4 and sew the (150) triangles together into (10) rows of (15) triangles each. Trim the resulting block to measure 63 1/2" x 78 1/2" to make the Center Block (Diagram 9).

Quilt Top Assembly

(Refer to the Quilt Layout when assembling the quilt top.)

- Sew (1) 1 1/4" x 78 1/2" Fabric H strip to each side of the Center Block. Sew (1) 1 1/4" x 65" Fabric H strip to the top and to the bottom of the Center Block.
- Center (1) 1 1/2" x 86" Fabric G strip on (1) side of the Center Block and pin in place. Start sewing the strip a 1/4" from the top edge of the block and stop a 1/4" from the bottom edge. **DO NOT TRIM THE EXCESS.** Repeat with the opposite side.
- Repeat Step 6 to sew (1) 1 1/2" x 71" Fabric G strip to the top and to the bottom of the Center Block, making sure to stop and start 1/4" away from each end of the block. To miter each corner, fold the Center Block on a diagonal, wrong side together. This should line up the strips from adjacent sides (Diagram 10).

Diamond Path

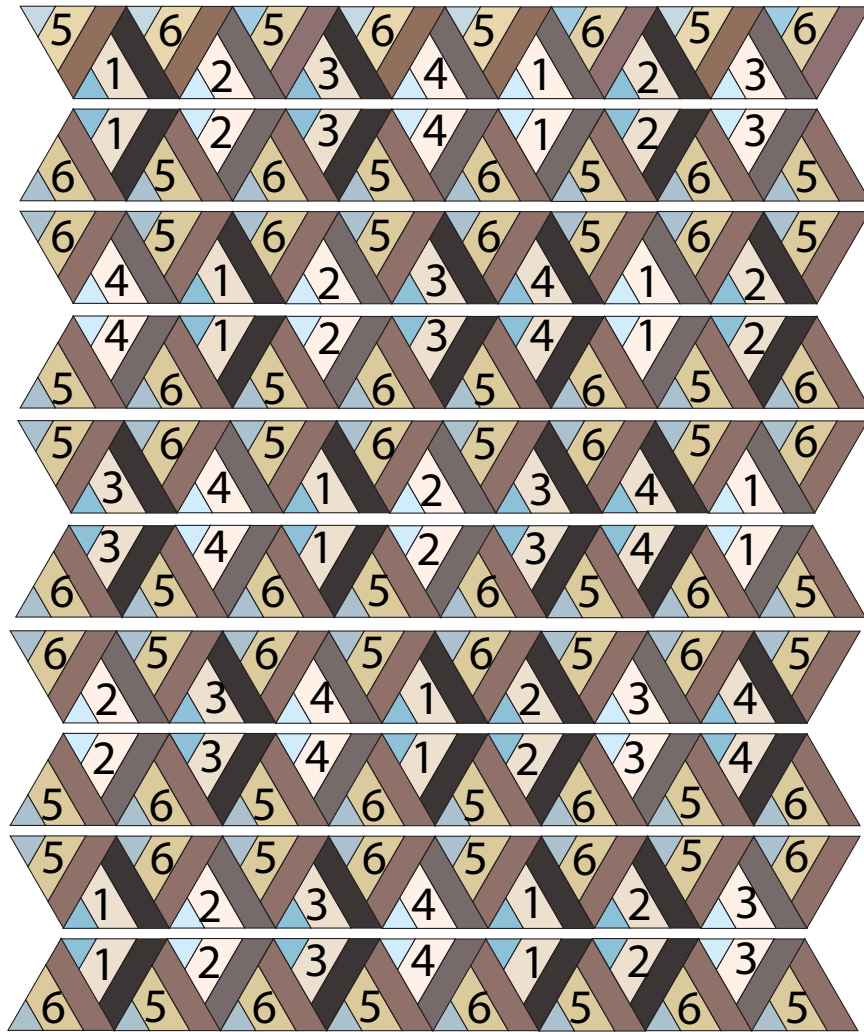


Diagram 8

Center Block
Trim to measure 63 1/2" x 78 1/2"

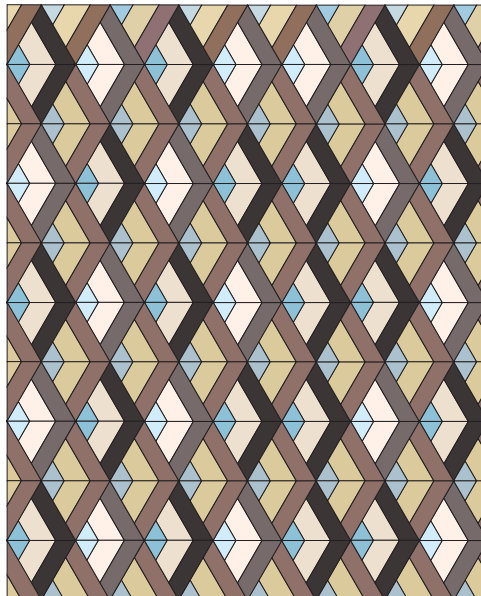


Diagram 9

Diamond Path

8. Starting at the sewn seam (represented by the arrow in Diagram 10), draw a 45-degree line to the edge of the fabric. Sew on the drawn line. Trim the excess fabric leaving a 1/4" seam. Repeat this step with the remaining corners.

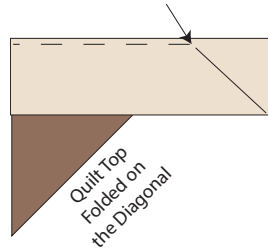
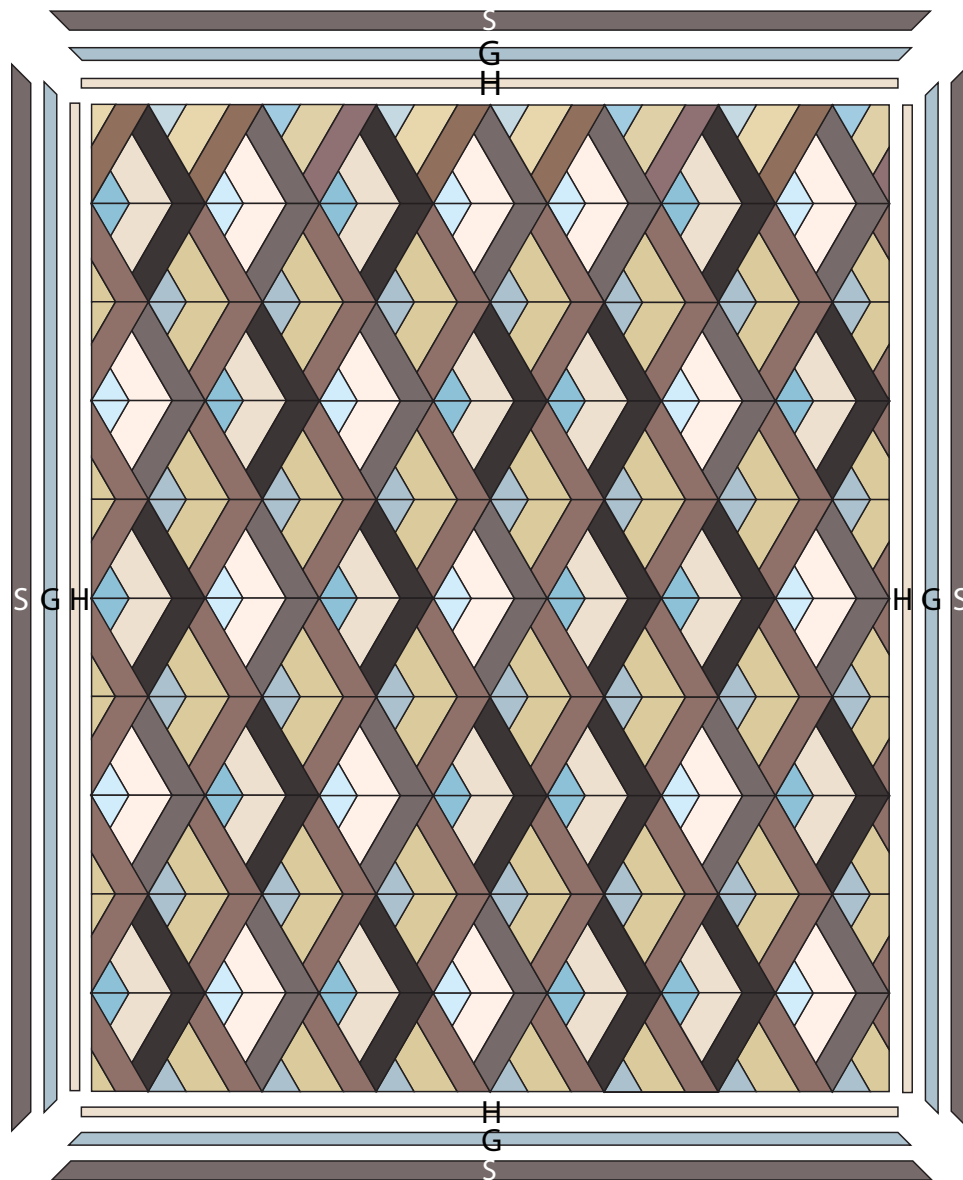


Diagram 10

9. Repeat Steps 6-8 using (2) 2" x 89" Fabric S strips and (2) 2" x 74" Fabric S strips to make the quilt top.

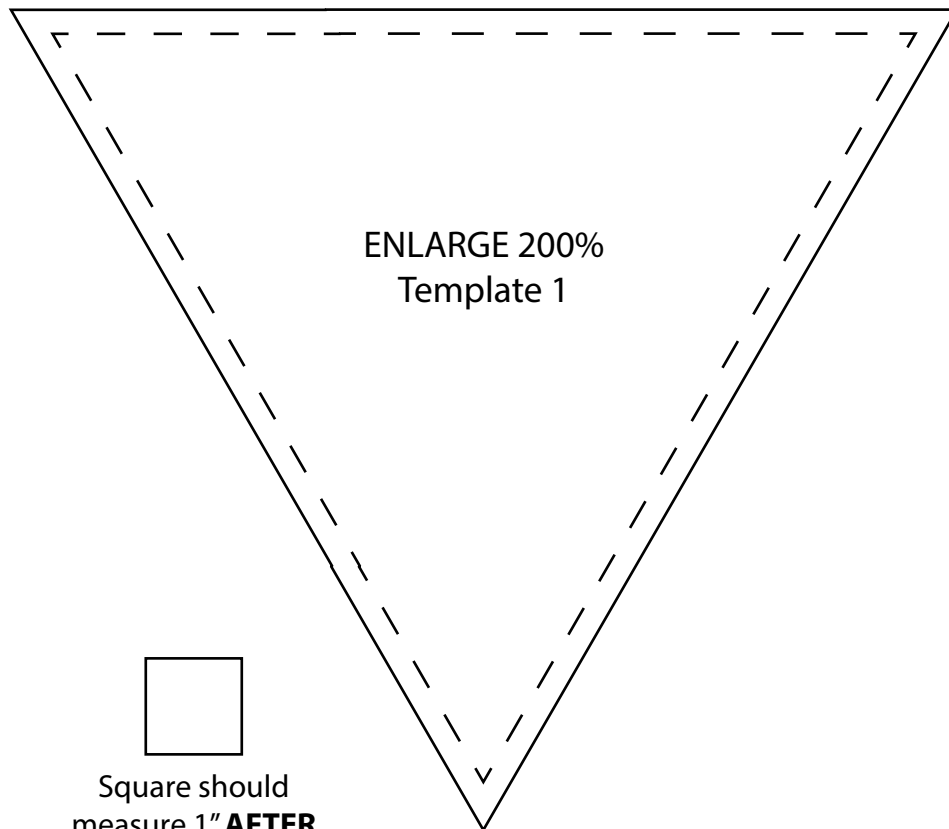
Finishing the Quilt

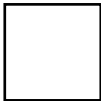
10. Layer and quilt as desired.
11. Sew the (8) Fabric T binding strips together, end to end with a 45-degree seams, to make the binding. Fold this long strip in half lengthwise with wrong sides together and press.
12. Bind as desired.



Quilt Layout

Diamond Path




Square should
measure 1" **AFTER**
enlarging template
200%

Savannah

ANDOVER FABRICS



9371-KY 1/2 yd



9371-T 6 1/4 yds
(includes backing)



9372-KY 2 1/2 yds



9372-T 1 1/3 yds



9373-KY 1 1/8 yds



9373-T 1 yd



9373-TL 5/8 yd



9373-YL



9374-KY 5/8 yd



9374-T 1 yd



9374-TL 5/8 yd



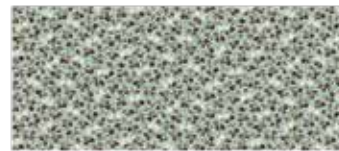
9374-YL 1/2 yd



9375-KY



9375-T 1/2 yd



9375-TL 1 1/8 yds



9375-YL



9376-K 1/2 yd



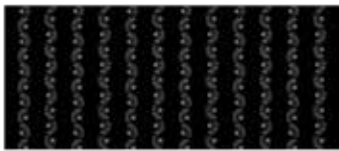
9376-L 1 yd



9376-T 1 1/8 yds



9376-Y



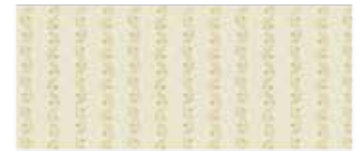
9377-K 2/3 yd
(includes binding)



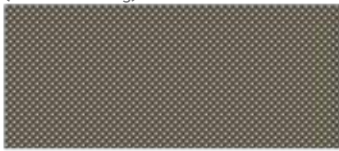
9377-L



9377-T 5/8 yd



9377-YL



9378-K



9378-T 1/2 yd



9378-TL 5/8 yd



9378-Y

About Our Fabrics

A recognized leader in the quilting industry, Andover Fabrics features designs by a wide variety of talented artists and licenses, including Downton Abbey and Eric Carle's Very Hungry Caterpillar. Catering to the tastes of creative and dedicated quilters, Andover has a style for everyone — authentic reproductions, romantic florals, modern and more.

Fabrics shown are 25% of actual size.

andover : makower uk

Free Pattern Download Available

1384 Broadway New York, NY 10018
Tel. (800) 223-5678 • andoverfabrics.com