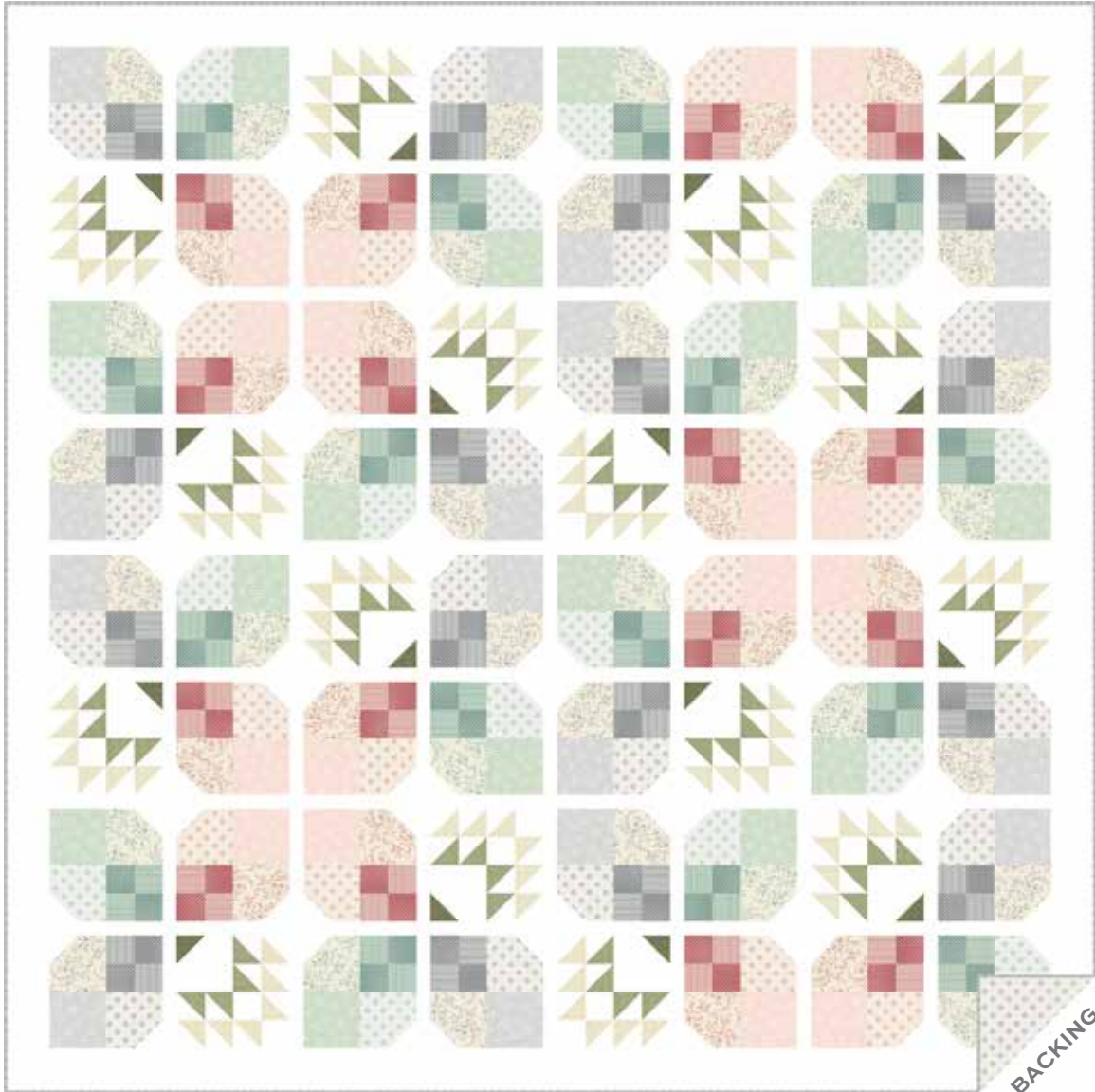
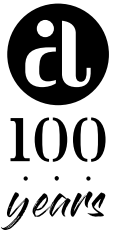


# Petit Point

ANDOVER FABRICS



Gentle Flowers Quilt designed by: **Janet Houts**  
Quilt Size: **77" x 77"** • Skill Level: **Confident Beginner**

# Gentle Flowers Quilt

Introducing Andover Fabrics new collection: **PETIT POINT** by Andover Fabrics

Quilt designed by Janet Houts



Quilt finishes 77" x 77"

*As calming as taking a walk through a lovely garden, the subtly tinted fabrics in this quilt combine in an original design that is sure to bring compliments. Easy piecing techniques ensure success.*

## Cutting Directions

**Note:** Read assembly directions before cutting patches. All measurements are cut sizes and include 1/4" seam allowances. A fat 1/4 is an 18" x 20"-22" cut. Borders and sashes are cut the exact lengths required plus 1/4" seam allowances. WOF designates the width of fabric from selvedge to selvedge (approximately 43" wide).

**Fabric A** Cut (48) squares 3" (or 2 7/8" for HST)  
Read Step 5 before cutting

**Fabric B** Cut (32) squares 3" (or 2 7/8" for HST)

**Fabric C** Cut (8) squares 3" (or 7/8" for HST)

**Fabric D** Cut (2) top/bottom borders 3 1/2" x 77 1/2",  
cut lengthwise  
Cut (2) side borders 3 1/2" x 71 1/2"  
Cut (3) sashes 1 1/2" x 71 1/2"  
Cut (28) sashes 1 1/2" x 17 1/2"  
Cut (32) sashes 1 1/2" x 8 1/2"  
Cut (88) squares 3" (or 2 7/8") for HST  
Cut (16) rectangles 2 1/2" x 4 1/2"  
Cut (144) squares 2 1/2"

**3 Floral Prints** From each:  
Cut (16) squares 4 1/2"

**3 "Solid" Prints** From each:  
Cut (16) squares 4 1/2"

**3 Bouquet Prints** From each:  
Cut (16) squares 4 1/2"

**3 Stripe Prints** From each:  
Cut (4) strips 2 1/2" x 22"

**3 Dot Prints** From each:  
Cut (4) strips 2 1/2" x 22"

**Binding**  
Cut (8) strips 2 1/2" x WOF for binding

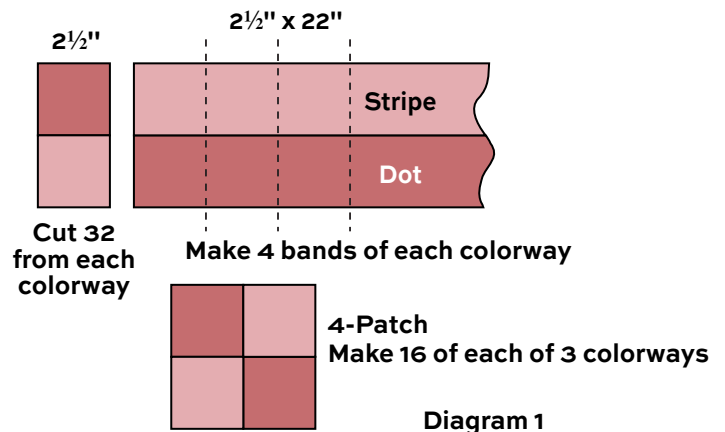
**Backing**  
Cut (2) lengths 43" x 85", pieced to fit quilt top  
with overlap on all sides

## Fabric Requirements

		Yardage	Fabric
<b>Fabric A</b>	blocks	3/8 yard	9057-L
<b>Fabric B</b>	blocks	fat 1/4	9057-V2
<b>Fabric C</b>	blocks	fat 1/4	9057-V3
<b>Fabric D</b>	set	3 1/2 yards	CS-10-Cottonball
<b>3 Floral</b>	blocks	3/8 yard each	
	538-C	538-E	538-T
<b>3 "Solids"</b>	blocks	3/8 yard each	
	539-C	539-E	539-T
<b>3 Bouquet</b>	blocks	3/8 yard each	
	540-C	540-E	540-T
<b>3 Stripes</b>	blocks	fat 1/4 each	
	541-C	541-E	541-T
<b>3 Dots</b>	blocks	fat 1/4 each	
	542-C	542-E	542-T
<b>Binding</b>		5/8 yard	541-C
<b>Backing</b>		5 yards	540-C

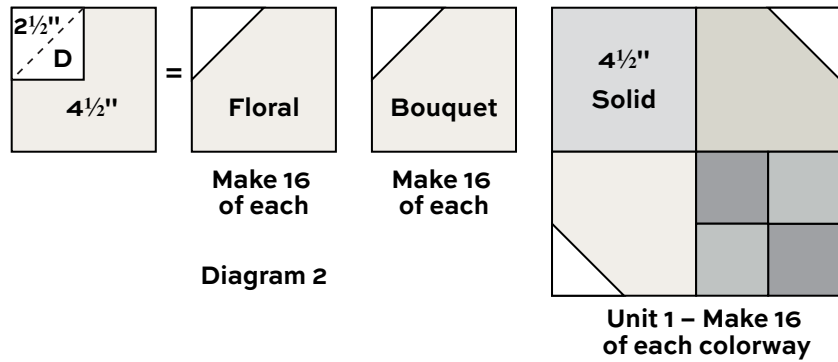
## Making the Quilt

1. The Unit 1s are made in three color combinations. Refer to the page of fabrics. The left vertical column has 5 prints that make up a colorway. The 5 center prints are a second combination, and the 5 prints in the right column make up the third.
2. A quick strip-piecing method is used to make the 4-Patch units in each block. Join dot and stripe print 22" strips in pairs to make 4 bands of each colorway. Press the seam allowances toward the dot prints. Cut each band into segments 2 1/2" wide. Cut 32 segments in each colorway. Join 2 segments as shown to make each 4-Patch. Repeat to make 16 of these units in each colorway. Set them aside.

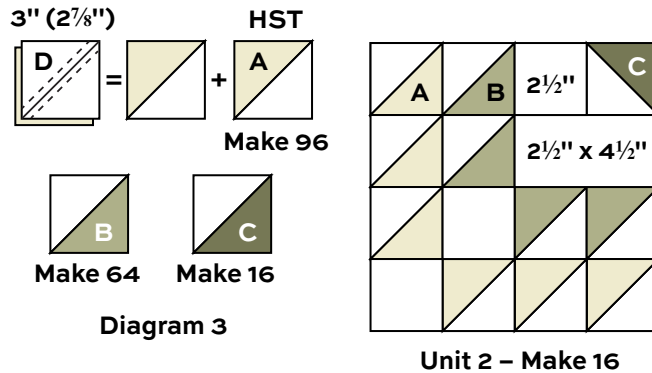


# Gentle Flowers Quilt

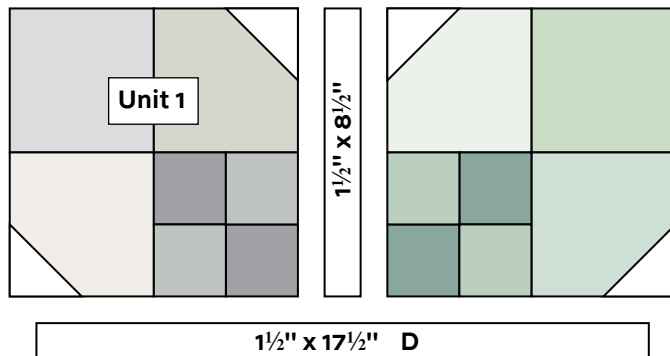
3. Draw a diagonal line on 96 Fabric D  $2\frac{1}{2}$ " squares. Position a marked square on one corner of a floral or bouquet print  $4\frac{1}{2}$ " square (Diagram 2). Stitch on the marked diagonal line. Cut away the excess fabric. Press the corner up. Make 16 of each colorway using the floral and bouquet squares.



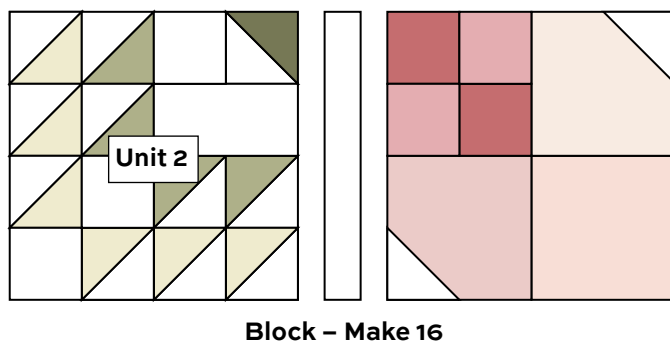
4. For each Unit 1, use patches and units from the same colorway. Referring to Unit 1 diagram, arrange one 4-Patch, one solid print  $4\frac{1}{2}$ " square, and 2 pieced squares from Step 3 as shown. Rotate the patches to make the design, paying attention to the orientation of the 4-Patch. Join the patches to make a Unit 1. Make 16 Unit 1s for each of the 3 colorways.



5. The Unit 2s are made with half-square triangles (HST). Use your favorite method to make HST that finish 2", or follow these directions. Fabric squares cut 3" will be trimmed after stitching. Cut the squares  $2\frac{7}{8}$ " if you do not wish to trim later. Draw a diagonal line on the wrong side of 88 Fabric D 3" (or  $2\frac{7}{8}$ ") squares. With right sides together, position the marked square on top of Fabric A, B, or C 3" (or  $2\frac{7}{8}$ ") squares. Stitch  $\frac{1}{4}$ " on each side of the diagonal line (Diagram 3). Cut apart on the drawn line. Press the seam allowance toward the darker fabric. Trim to  $2\frac{1}{2}$ " square if needed. Make the number of HST as listed in the diagram.



6. Refer to the Unit 2 diagram. Arrange the HST, 3 Fabric D  $2\frac{1}{2}$ " squares, and 1 Fabric D  $2\frac{1}{2}$ " x  $4\frac{1}{2}$ " rectangle in 4 horizontal rows. Look through a camera or the wrong end of binoculars to be sure that the patches match the diagram. Join the patches into rows, and then join the rows.

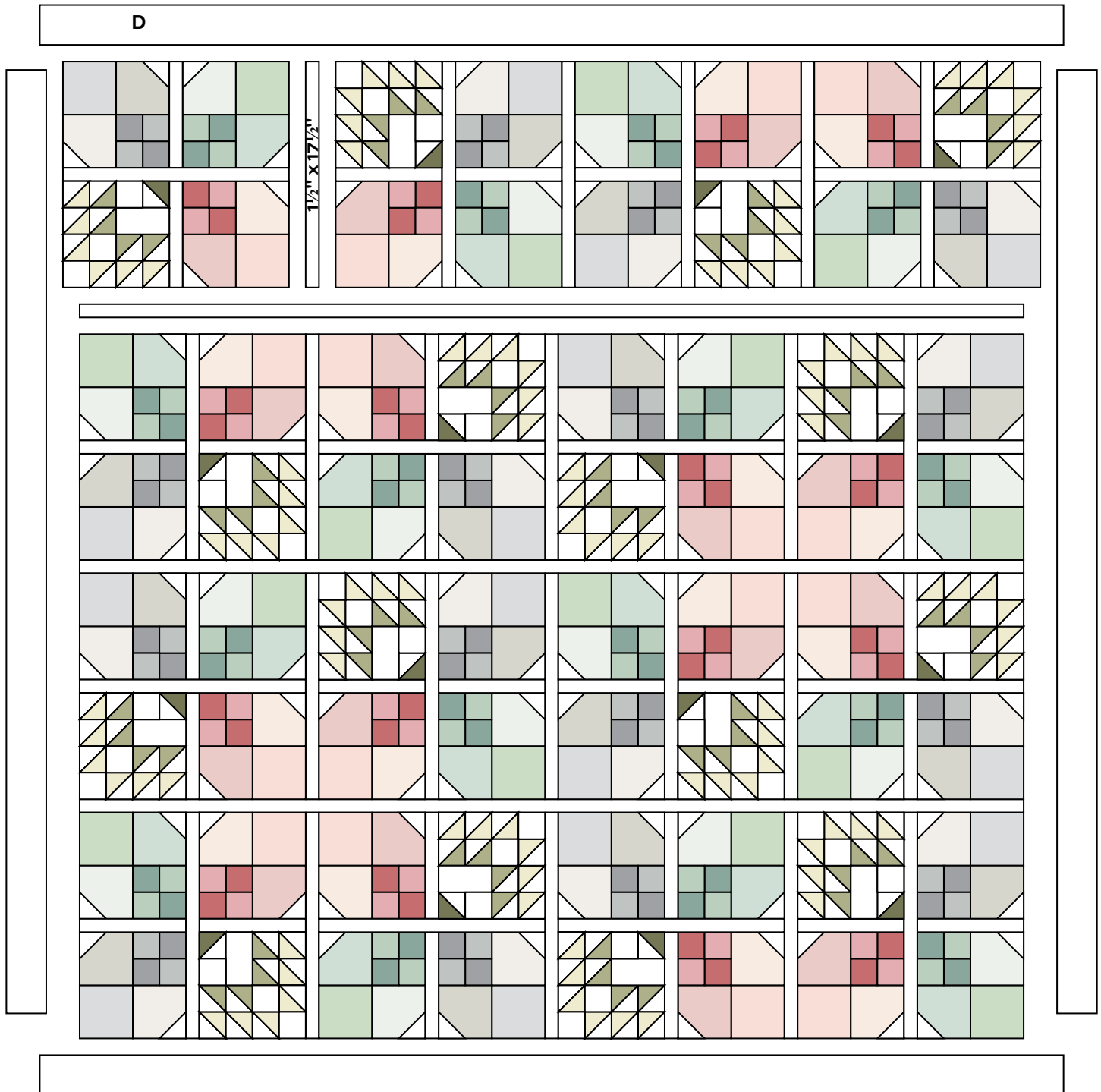


7. Refer to the Block diagram. Position 3 Unit 1s (1 in each colorway), 1 Unit 2, and 2 Fabric D  $8\frac{1}{2}$ " sashes as shown. Rotate the Unit 1s so that the 4-Patch units are in the center. Join the parts into 2 rows. Sew a Fabric D  $17\frac{1}{2}$ " sash between the rows to make a block. Make 16 blocks.

8. Refer to the Quilt Diagram. On a large flat surface or design board, position the blocks into 4 rows of 4 blocks each. Note the rotation of the blocks. Insert Fabric D  $1\frac{1}{2}$ " x  $17\frac{1}{2}$ " sashes between blocks. Join the blocks and sashes into 4 rows. Sew the  $7\frac{1}{2}$ " sashes between rows.

## Finishing the Quilt

9. Finally, sew Fabric D borders to the sides, and then to the top and bottom.
10. Layer the quilt with batting and backing and baste. Quilt in the ditch around borders, sashes, and patches. Bind to finish the quilt.



Quilt Diagram

# Petit Point

ANDOVER FABRICS



538-C



538-E



538-T



539-C



539-E



539-T



540-C



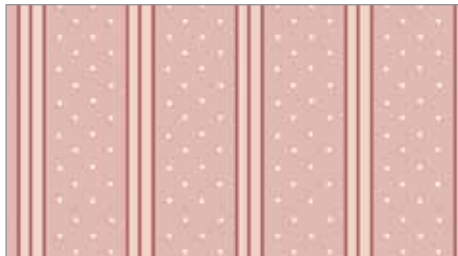
540-E



540-T



541-C



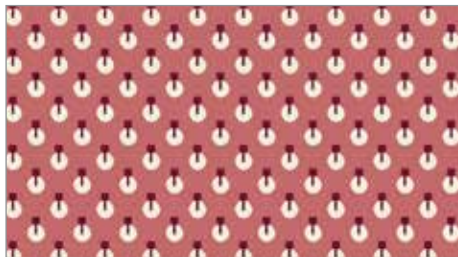
541-E



541-T



542-C



542-E



542-T

Additional fabric from  
**Century Solids** by  
Andover Fabrics



CS-10-Cottonball

Additional fabric from  
**Linen Textures** by  
Andover Fabrics



9057-L



9057-V2



9057-V3

All fabrics are used  
in quilt pattern.

Fabrics shown are  
100% of actual size.

andover : makower uk

Free Pattern Download Available

1384 Broadway, 24TH Floor, New York, NY 10018  
Tel. (800) 223-5678 • andoverfabrics.com