

*Introducing Andover Fabrics new collection:  
Partridge in a Pear Tree fabrics by Kim Schaefer*

# Partridge in a Pear Tree



**Partridge in a Pear Tree fabrics  
by Kim Schaefer  
Quilt designed and made  
by Kim Schaefer  
Finished size: 59-1/2" x 59-1/2"**



**makower uk<sup>®</sup>**

1384 Broadway • New York, NY 10018 • (800) 223-5678  
[www.andoverfabrics.com](http://www.andoverfabrics.com)

*- Free Pattern Download Available -*



# Partridge in a Pear Tree Quilt

Introducing Andover Fabrics new collection: Partridge in a Pear Tree by Kim Schaefer

Quilt designed and made by Kim Schaefer

## Planning

Celebrate Christmas with this make-in-a weekend quilt. Sprinkled with pears, posies, and stars, this quilt is sure to bring the spirit of the holiday into your home.

Width of fabric strips are shown as WOF in the diagrams. For example, when you see 3-1/2" x WOF in a diagram, it means 3-1/2" x width of fabric.

Quilt finishes 59-1/2" x 59-1/2"  
Number and finished size of blocks  
49 Rail Fence Variation Blocks 7" x 7"

## Fabric Requirements and Cutting Directions

**4044-K 1-5/8 yard Partridge Border Stripe (outer border)**

Cut (4) 4-1/2" x 51-1/2" strips lengthwise, centered on trees

**4045-K 3/8 yard Black Pears Print (blocks)**

Cut (2) 3-1/2" x width of fabric strips

**3104-L2 1/8 yard Beige Texture (blocks)**

Cut (1) 1-1/2" x width of fabric strip

**4046-Y 5/8 yard Yellow Posy Print (blocks)**

Cut (4) 3-1/2" x width of fabric strips

**4047-Y 1/8 yard Gold Stripe (blocks)**

Cut (2) 1-1/2" x width of fabric strips

**3133-N2 3/4 yard Brown Star Print (blocks)**

Cut (6) 3-1/2" x width of fabric strips

**3104-N 1/4 yard Medium Brown Texture (blocks)**

Cut (3) 1-1/2" x width of fabric strips

**4045-L 3/4 yard Cream Pears Print (blocks)**

Cut (6) 3-1/2" x width of fabric strips

**3133-G2 1/4 yard Green Star Print (blocks)**

Cut (3) 1-1/2" x width of fabric strips

**4046-R 5/8 yard Red Posy Print (blocks)**

Cut (4) 3-1/2" x width of fabric strips

**4047-R 1/4 yard Red Stripe (blocks)**

Cut (2) 1-1/2" x width of fabric strips

**4047-G 3/8 yard Green Stripe (blocks)**

Cut (2) 3-1/2" x width of fabric strips

**3104-V 1/8 yard Olive Texture (blocks)**

Cut (1) 1-1/2" x width of fabric strip

**4045-N 1/8 yard\* Brown Pears Print (block)**

Cut (2) 3-1/2" x 7-1/2"

**3133-L2 1/4 yard Beige Star Print (block, border corners)**

Cut (2) 1-1/2" x 7-1/2"

Cut (4) 4-1/2" squares

**3104-R2 3/8 yard Red Texture (inner border)**

Cut (2) 1-1/2" x 49-1/2" strips, pieced from 3 width of fabric strips

Cut (2) 1-1/2" x 51-1/2" strips, pieced from 3 width of fabric strips

*\*Additional yardage needed for binding or backing (see below).*

**4045-N 4 yards Brown Pears Print (backing)**

Cut and piece to fit quilt top with 4" overlap on all sides.

**3104-G 5/8 yard Green Texture (binding)**

Cut (7) 2-1/2" x width of fabric strips

# Partridge in a Pear Tree

## Piecing the Blocks

1. Referring to Diagram A, stitch together 2 black pears print 3-1/2" x width of fabric strips and beige texture 1-1/2" x width of fabric strip to make strip set. Press seams in direction indicated. Make 1. Cut 4 segments 7-1/2" wide from strip set to make 4 Rail Fence Variation Blocks. In same manner, make remaining strip sets in quantities and fabric shown. Cut segments from strip sets in quantities shown to make remaining Rail Fence Variation Blocks.

## Assembling the Quilt

2. Refer to Quilt Diagram **and** photo for following steps. Stitch 7 rows of 7 blocks each, watching placement and orientation carefully.
3. Sew block rows together to make quilt center.
4. Stitch red texture 1-1/2" x 49-1/2" strips to sides. Stitch remaining red texture strips to top and bottom.
5. Sew partridge border stripe strips to sides of quilt, orienting strips as shown. Stitch beige star print 4-1/2" squares to ends of remaining border stripe strips. Sew strips to top and bottom.

## Finishing the Quilt

6. Layer quilt with batting and brown pears print backing. Quilt as desired. Bind with green texture to finish the quilt.

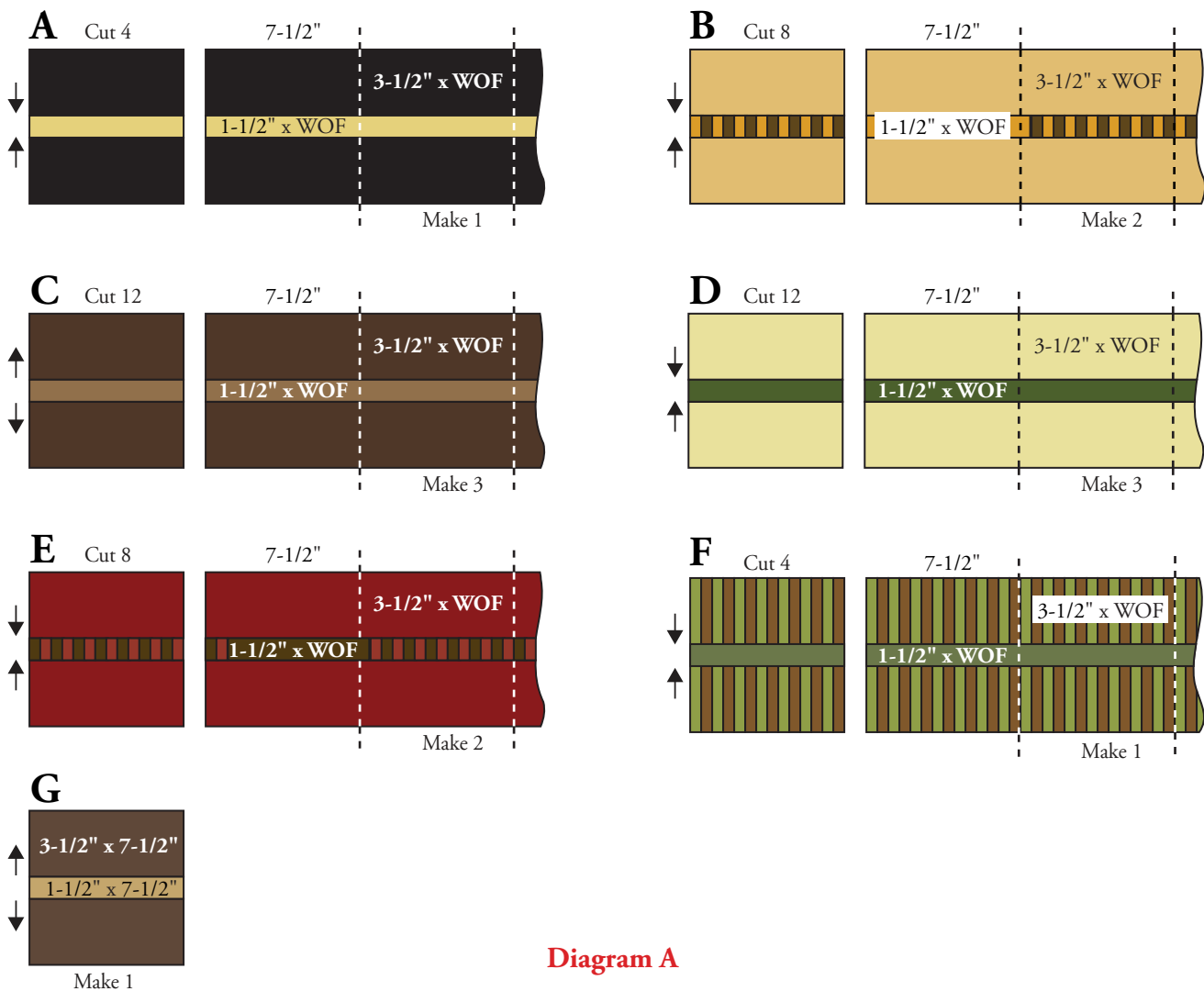
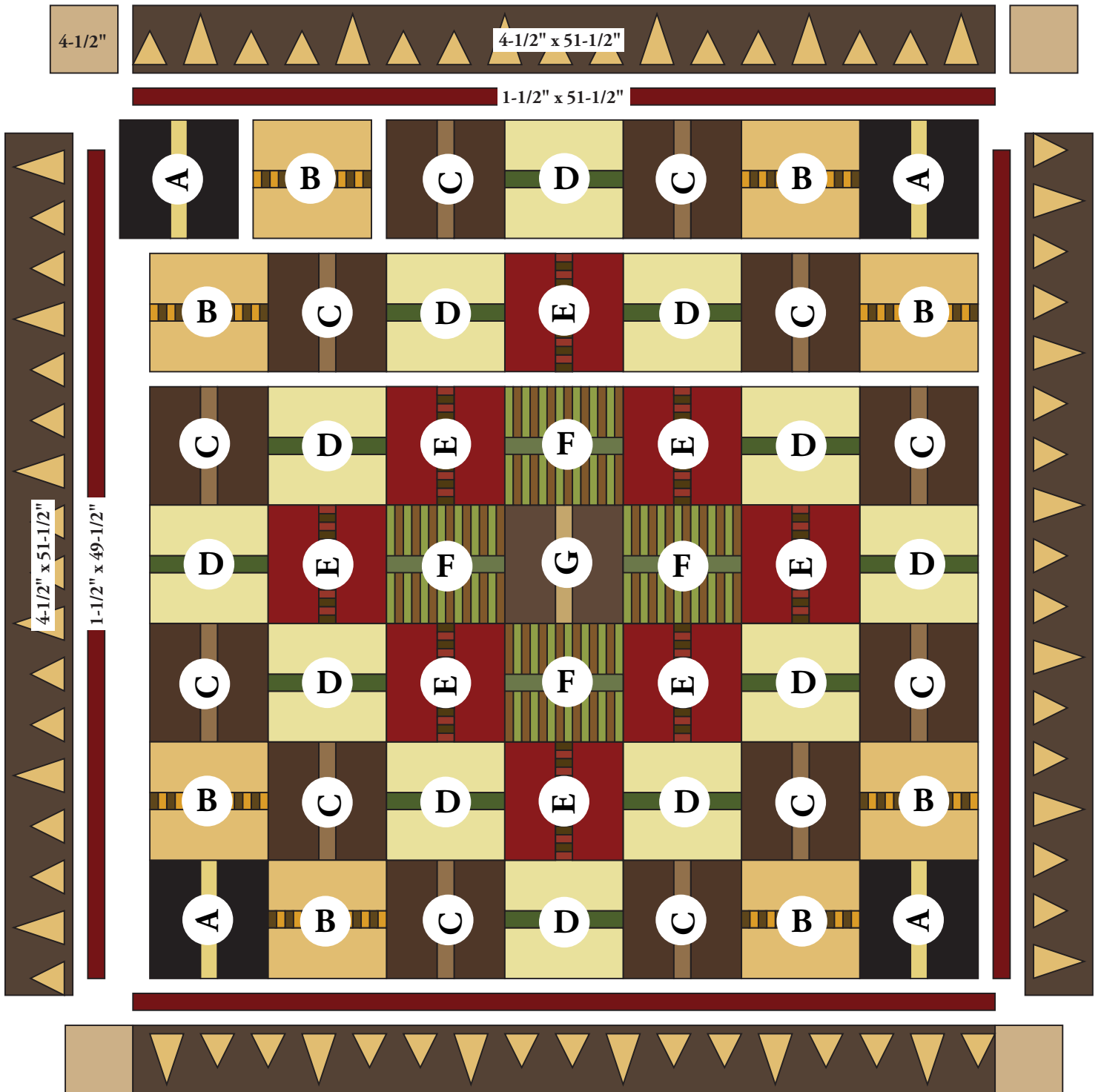


Diagram A

# Partridge in a Pear Tree



Quilt Diagram



# Partridge in a Pear Tree

by Kim Schaefer



4044-K\*



4044-L



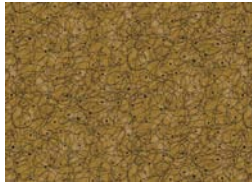
3104-L2\*



3133-L2\*



4045-L\*



3104-Y



3133-Y2



4045-N\*



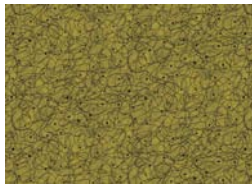
3104-N\*



3133-G2\*



4045-K\*



3104-V\*



3133-RN



4046-Y\*



3104-G\*



3133-N2\*



4046-N\*



3104-R2\*



3133-K



4046-G



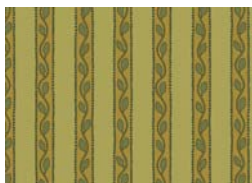
4047-L



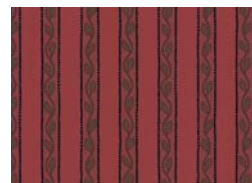
4047-Y\*



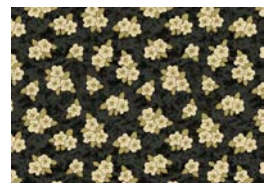
4046-R\*



4047-G\*



4047-R\*



4046-K

\*Indicates fabric used in quilt pattern. Fabrics shown are 20% of actual size.