

Orbit

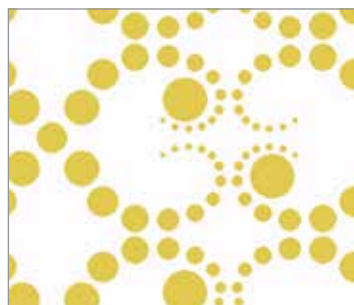
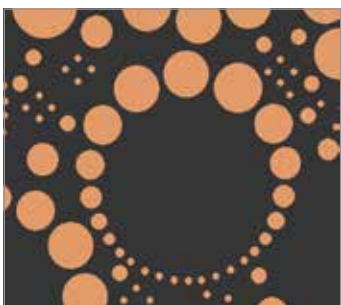
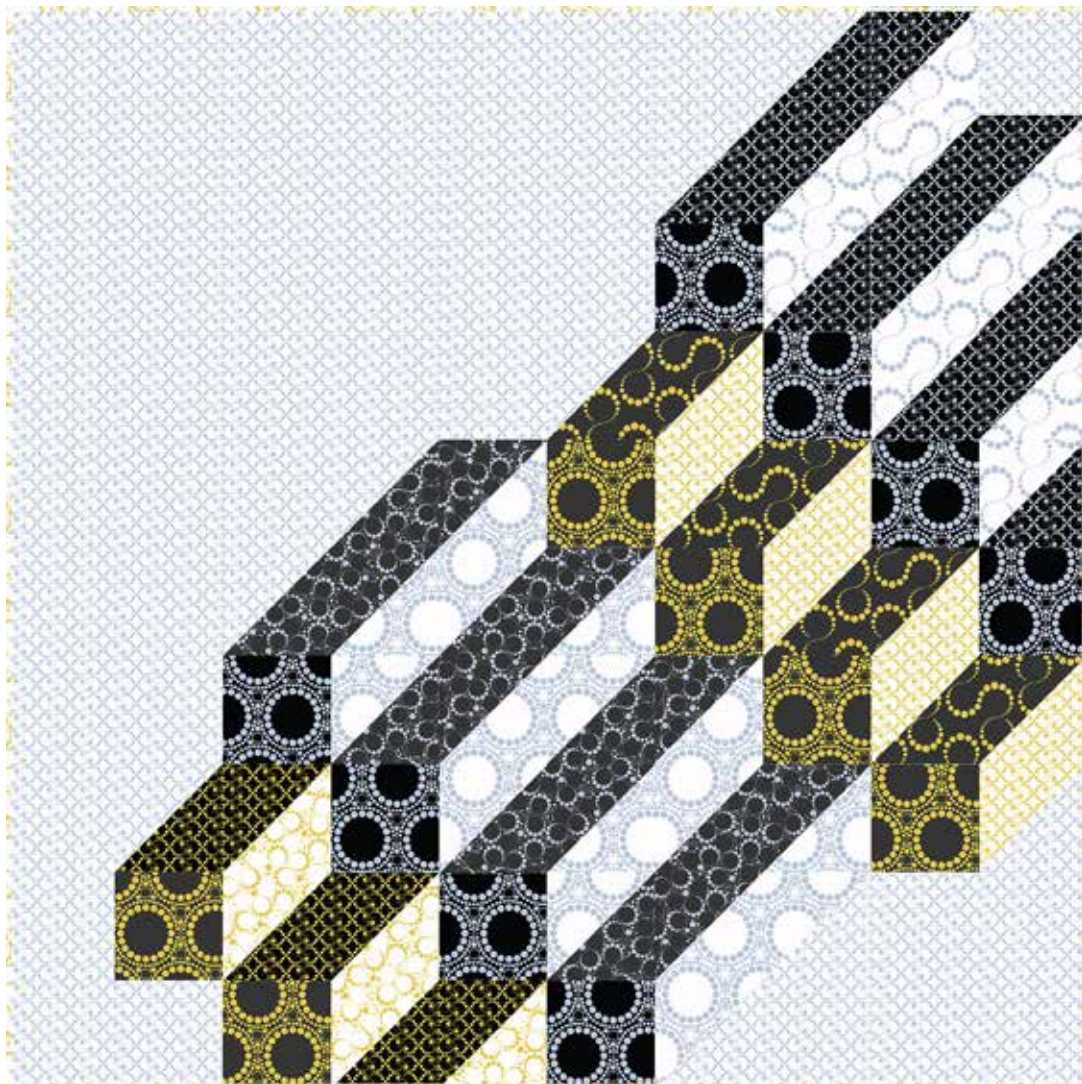
FABRICS BY FIYEL LEVENT



Rise Up Quilt designed
by: **Pink Hippo Quilts**

Quilt Size: 60" x 60"

andoverfabrics.com



About Orbit

Orbit, a collection of both soft and bright metallics, is inspired by my journeys in countries in Europe and along the Silk Road. The repetitive motifs found in the art and architecture range in scale and color. They are subtle and universal, lending themselves to use in a variety of ways. — *Fiyel Levent*

andover



makower uk
The Henley Studio

Free Pattern Download Available

1384 Broadway New York, NY 10018
Tel. (800) 223-5678 • andoverfabrics.com

Rise Up Quilt



Introducing Andover Fabrics new collection: **ORBIT** by Fiyel Levent

Quilt designed by Pink Hippo Quilts

Quilt finishes 60" x 60"

Dramatic and contemporary are words to describe this dynamic wall quilt. It is made with simple pieced squares in light and dark fabrics that form bold diagonal lines across the quilt.

Cutting Directions

Note: All measurements are cut sizes. A fat ¼ is an 18" x 21"-22" cut. WOF designates the width of fabric from selvedge to selvedge (approximately 42" wide).

*Read Step 1 before cutting squares for HST.

- Fabric A** Cut (6) squares 6½" x 6½"
- Fabric B** Cut (8) squares 6½" x 6½"
- Fabric C** Cut (8) squares 6⅞" x 6⅞" for HST
- Fabric D** Cut (4) squares *6⅞" x 6⅞" for HST
- Fabric E** Cut (5) squares *6⅞" x 6⅞" for HST
- Fabric F** Cut (8) squares *6⅞" x 6⅞" for HST
- Fabric G** Cut (7) strips 2½" x WOF for binding
Cut (3) squares *6⅞" x 6⅞" for HST
- Fabric H** Cut (3) squares *6⅞" x 6⅞" for HST
- Fabric I** Cut (6) squares *6⅞" x 6⅞" for HST
- Fabric J** Cut (4) squares *6⅞" x 6⅞" for HST
- Fabric K** Cut (1) square 24½" x 24½"
Cut (2) rectangles 12½" x 18½"
Cut (1) square 12½" x 12½"
Cut (2) rectangles 6½" x 12½"
Cut (5) squares 6½" x 6½"
Cut (5) squares *6⅞" x 6⅞" for HST
- Backing** Cut (2) panels 35" x 68", pieced to fit quilt top with overlap on all sides

Fabric Requirements

		Yardage	Fabric
Fabric A	setting	fat ¼ yd	7645-MKG
Fabric B	setting	½ yd	7645-MKS
Fabric C	setting	½ yd	7645-MLS
Fabric D	setting	fat ¼ yd	7646-MKG
Fabric E	setting	fat ¼ yd	7646-MLS
Fabric F	setting	½ yd	7647-MKS
*Fabric G	setting	¾ yd	7647-MLG
Fabric H	setting	fat ¼ yd	7648-MKG
Fabric I	setting	fat ¼ yd	7648-MKS
Fabric J	setting	fat ¼ yd	7648-MLG
Fabric K	setting	1½ yds	7648-MLS
Backing		4 yards	7647-MLS

*includes binding

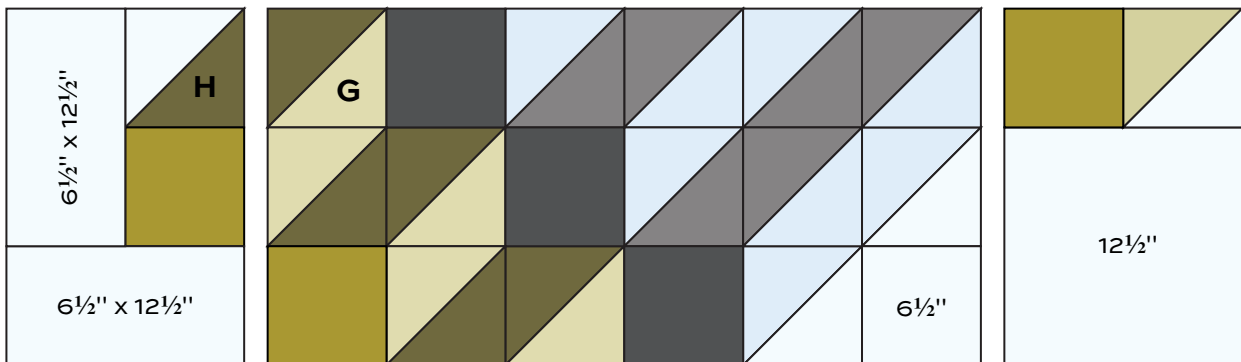
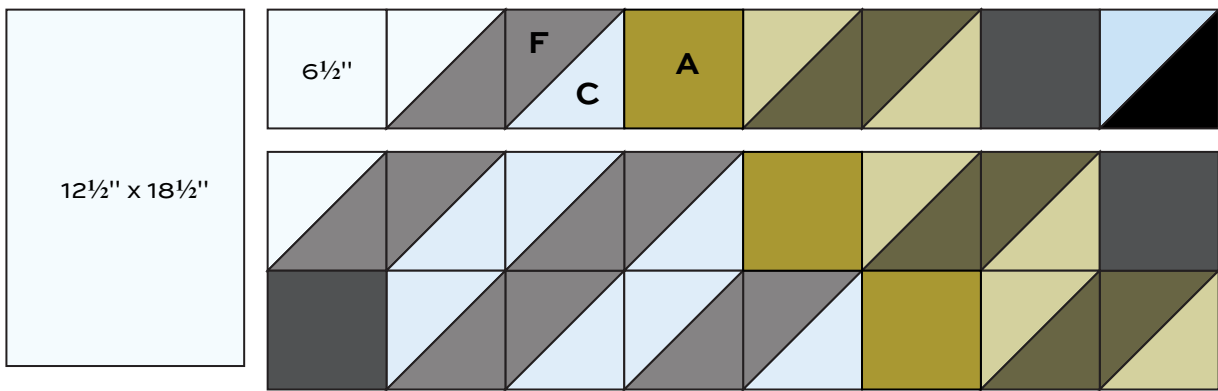
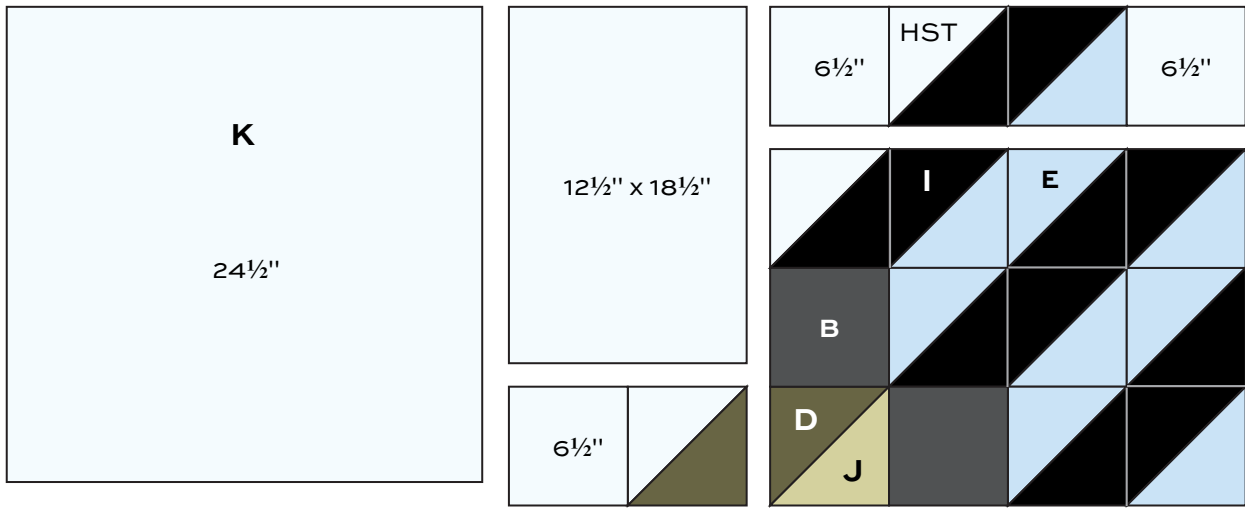
Making the Quilt

- *If you wish to make the HST slightly larger and trim them later, cut squares 7" x 7" instead of 6⅞" x 6⅞" as listed. The design is made with half-square triangles (HST) that finish 6" square. Use your favorite method to make HST, or follow these directions. Referring to the Quilt Diagram, make HST in the combinations shown. Draw a diagonal line on the wrong side of each light 6⅞" or 7" square (Fabrics C, E, G, J, and K). Place a marked square on a dark square that's the same size, right sides together. Sew ¼" seam on each side of the marked line; cut apart on the marked line. Press open to make pieced HST. Note that a few HST are made with 2 light squares. Trim the pieced squares to 6½" x 6½". Make a total of 45 HST. A couple of the HST aren't needed.
- Refer to the Quilt Diagram. Work on a large design wall or flat surface so that you can be assured that the design is correct. Arrange and join the HST with the Fabric K background patches in the units shown. Join smaller units to make larger units. Finally, join the large pieced rows.

Finishing the Quilt

- Layer the quilt with batting and backing and baste. Quilt in the ditch around patches. Quilt around the larger printed motifs. Quilt large Fabric K patches as you wish. Bind to finish the quilt.

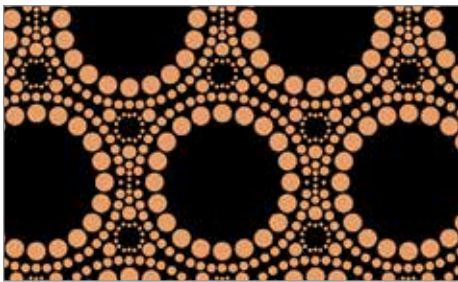
Rise Up Quilt



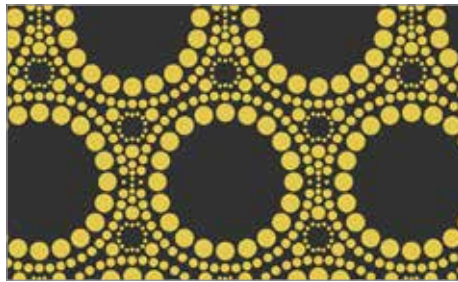
Quilt Diagram

Orbit

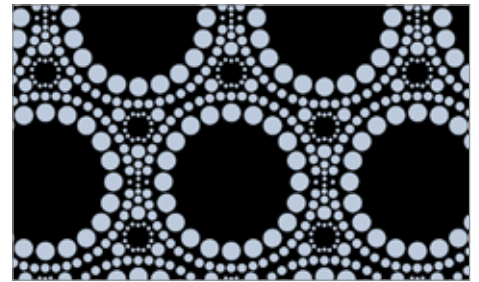
FABRICS BY FIYEL LEVENT



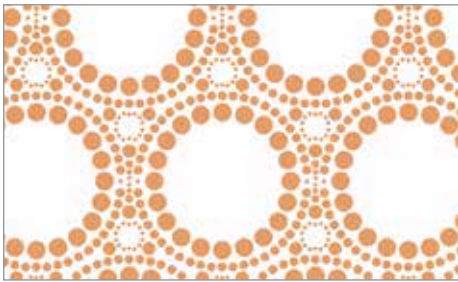
7645-MKC



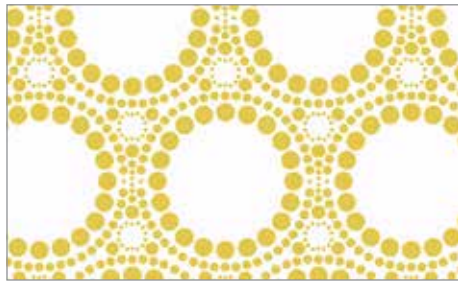
7645-MKG*



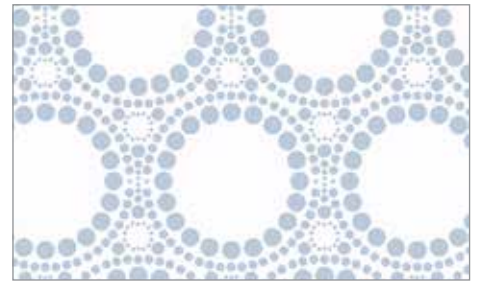
7645-MKS*



7645-MLC



7645-MLG



7645-MLS*



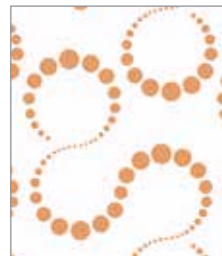
7646-MKC



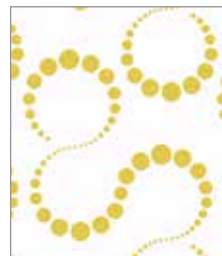
7646-MKG*



7646-MKS*



7646-MLC



7646-MLG



7646-MLS*



7647-MKC



7647-MKG



7647-MKS*



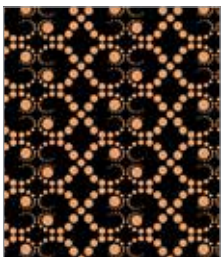
7647-MLC



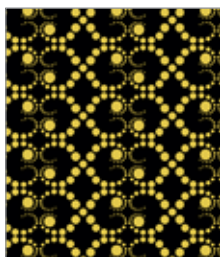
7647-MLG*



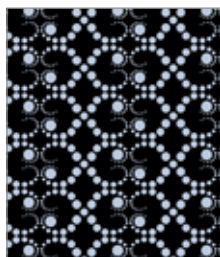
7647-MLS*



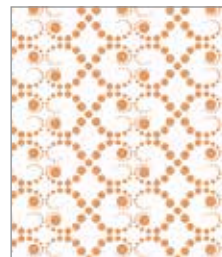
7648-MKC



7648-MKG*



7648-MKS*



7648-MLC



7648-MLG*



7648-MLS*

*Indicates fabrics used in quilt pattern. Fabrics shown are 25% of actual size.

andover



makower uk
The Henley Studio

Free Pattern Download Available

1384 Broadway New York, NY 10018
Tel. (800) 223-5678 • andoverfabrics.com