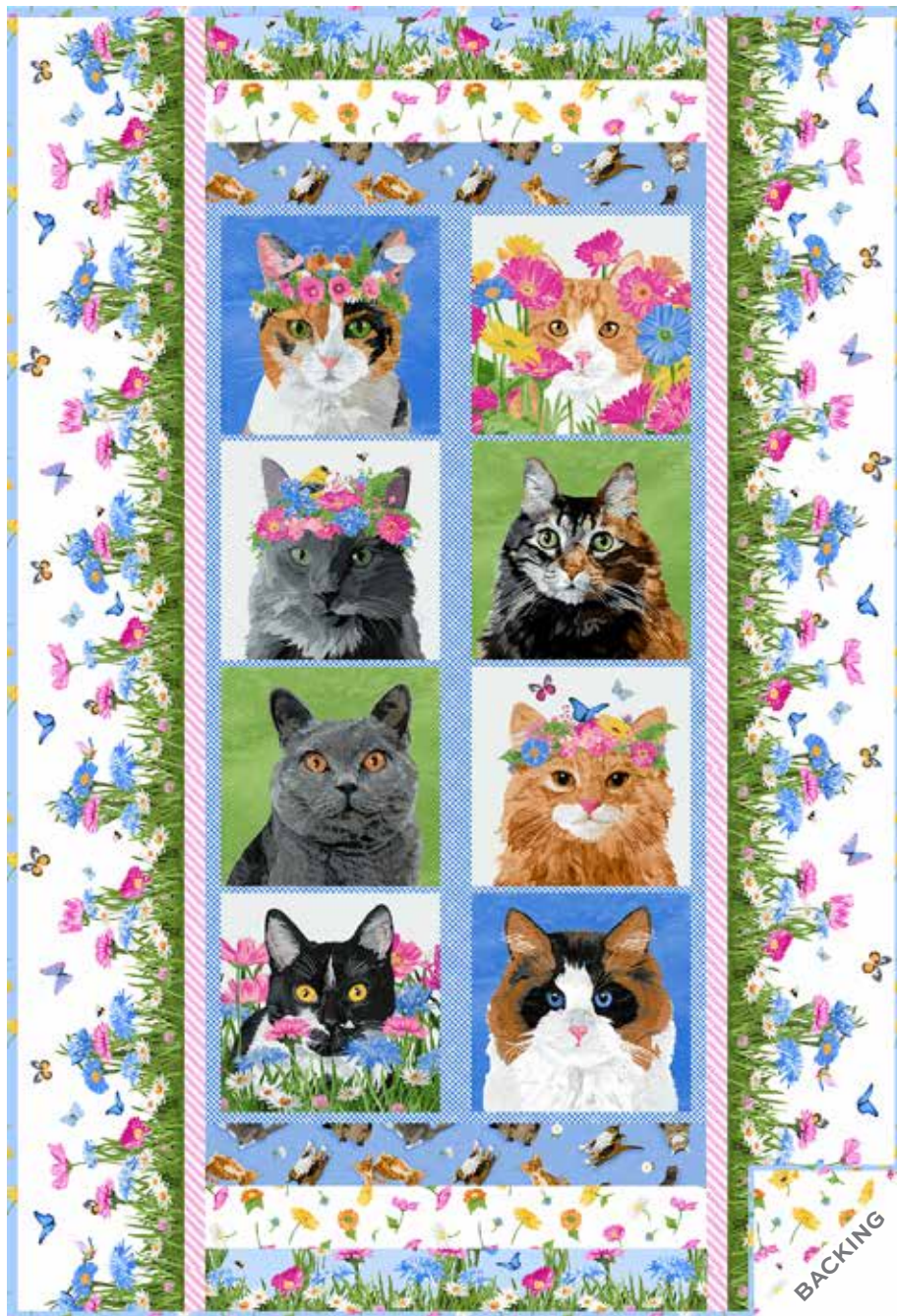


Meow Meadow

TWO CAN ART



Meow Meadow Quilt
designed by: **Patti Gay**
of **Two Can Art**

Quilt Size: **42" x 62"**
andoverfabrics.com

About Meow Meadow

We are of the thought that every home should have a cat and every cat should have a home. Our Two Can Art Meow Meadow Collection is purrfect for the cat lover. Some of our own (all rescues) were models for our designs and they have all been Cat approved. – Two Can Art

andover

•
•
• makower.uk
•

Free Pattern Download Available

1384 Broadway New York, NY 10018
Tel. (800) 223-5678 • andoverfabrics.com

Meow Meadow Quilt



Introducing Andover Fabrics new collection: **MEOW MEADOW** by Two Can Art

Quilt designed by Patti Gay

Quilt finishes 42" x 62"

Who could resist this fun novelty panel with felines and flower garlands and butterflies? The quilt is so quick to make, you might consider making several to give to your cat-loving friends.

Cutting Directions

Note: Read assembly directions before cutting patches. All measurements are cut sizes and include 1/4" seam allowances. WOF designates the width of fabric from selvedge to selvedge (approximately 42" wide).

Fabric A

Fussy-cut (1) panel 24½" x WOF, cut crosswise
(Read Step 1)

Fabric B

Fussy-cut (2) borders 3½" x 24½", cut lengthwise

Fabric C

Cut (2) borders 8½" x 62½", cut lengthwise

Fabric D

Fussy-cut (2) borders 3½" x 24½", cut lengthwise

Fabric E

Cut (6) strips 2½" x WOF for binding

Fabric F

Fussy-cut (2) borders 3½" x 24½", cut lengthwise

Fabric G

Cut (4) strips 1½" x WOF, pieced to make the following:
(2) borders 1½" x 62½"

Backing

Cut (2) panels 35" x 50", pieced to fit quilt top with overlap on all sides

Fabric Requirements

	Yardage	Fabric	
Fabric A	center	1 panel (¾ yard)	9342-X
Fabric B	border	¾ yard	9343-B
Fabric C	border	2 yards	9343-L
Fabric D	border	¾ yard	9344-B
Fabric E	binding	½ yard	9345-B
*Fabric F	border	¾ yard	9345-L
Fabric G	border	¼ yard	9346-E
Backing		3 yards	9345-L

*includes binding

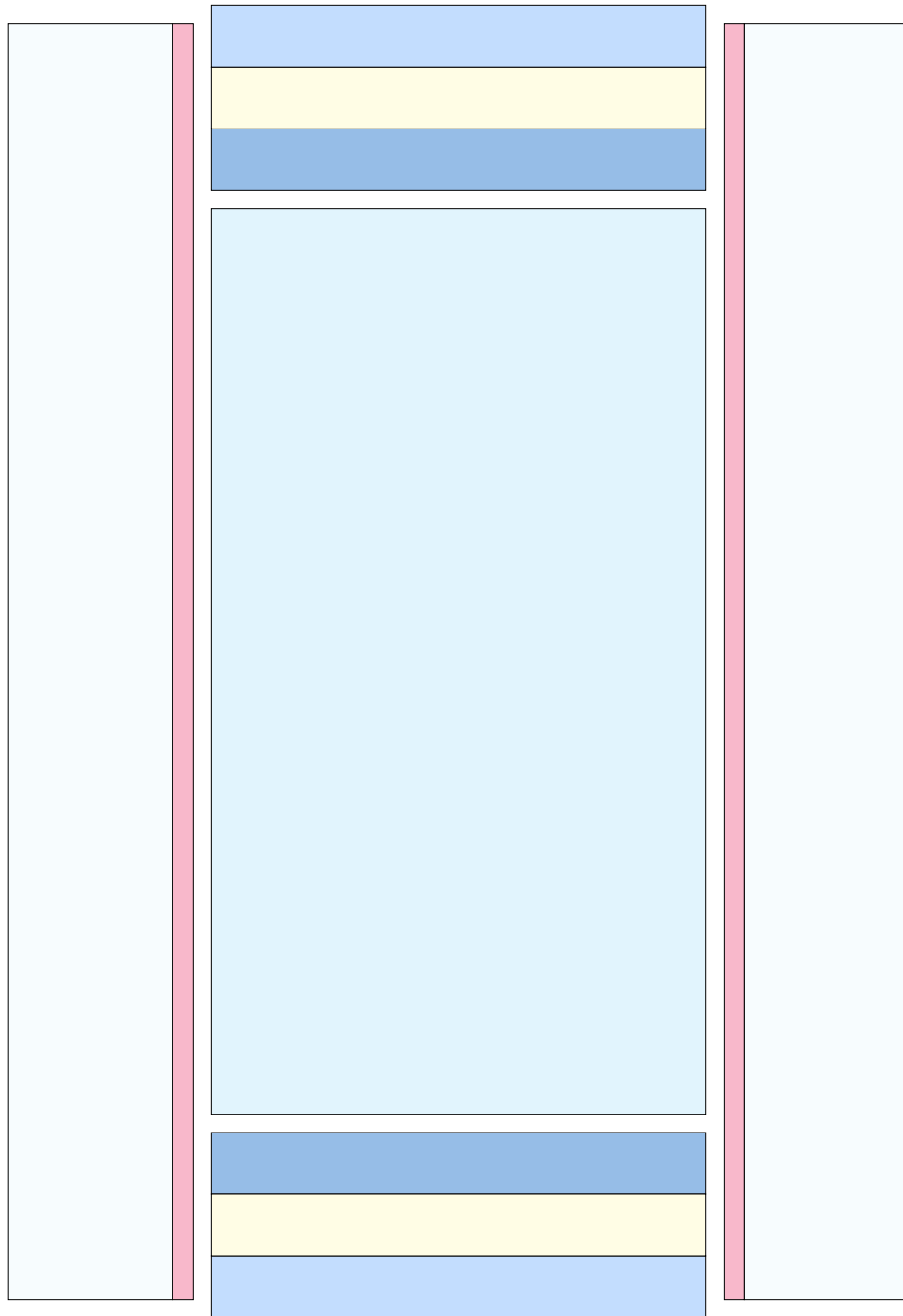
Making the Quilt

1. Referring to the quilt photograph, fussy-cut the cat panel 24½" (that should include the blue check background around all sides and ¼" seam allowances). Cut the panel the full crosswise width of the fabric and trim off the selvages. Do not be concerned about the length of the panel.
2. Referring to the Quilt Diagram, join three 24½"-long border strips in the order shown and sew to the top of the quilt. Repeat for the bottom.
3. Join Fabric C and Fabric G border strips to make a border unit. Sew to a side of the quilt. Trim the border unit even with the top and bottom of the quilt if needed. Repeat for the opposite side.

Finishing the Quilt

4. Layer the quilt with batting and backing and baste. Quilt in the ditch around borders. Quilt around the printed motifs in the cat panel and the wide outer border. Bind to finish the quilt.

Meow Meadow Quilt



Quilt Diagram

Meow Meadow

BY TWO CAN ART



9342-X*



9343-B*



9343-L*



9343-Y



9344-B*



9345-B*



9344-E



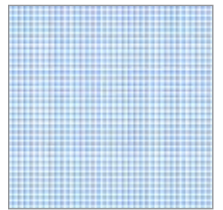
9345-L*



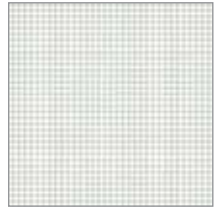
9344-G



9345-Y



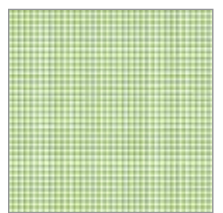
9347-B



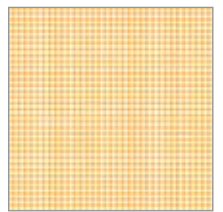
9347-C



9347-E



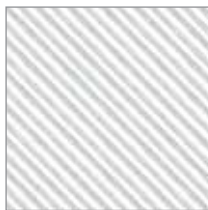
9347-G



9347-O



9346-B



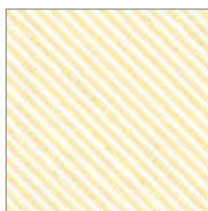
9346-C



9346-E*



9346-G



9346-Y

*Indicates fabrics used in quilt pattern.

Fabrics shown are 15% of actual size.

Free Pattern Download Available

1384 Broadway New York, NY 10018
Tel. (800) 223-5678 • andoverfabrics.com

andover • makower uk