

Marmalade

BY KATHY HALL



Marmalade Quilt
designed by:
Kathy Hall

Quilt Size: 62" x 71"

andoverfabrics.com



About Marmalade

Marmalade is a fruit preserve made from citrus peels. Kathy's newest fabric collection reminds us of Marmalade with its sweet shades of oranges and gold with its peels suspended in the jar. Mix Marmalade and lampblack 2017 and you'll have enough golds, cheddars and blacks for your reproduction Halloween projects! — *Kathy Hall*

andover



makower uk
The Henley Studio

Free Pattern Download Available

1384 Broadway New York, NY 10018
Tel. (800) 223-5678 • andoverfabrics.com

Revised 1/15/17

Marmalade Quilt



Introducing Andover Fabrics new collection: **MARMALADE** by Kathy Hall
Quilt designed by Kathy Hall

Quilt finishes 62" x 71"
42 Blocks: 9" x 9"

A perennial favorite, Log Cabin quilts have been made since the 1800s. The pieced border adds a pleasing frame to this classic. Rely on your own design sensibilities to mix up the prints.

Cutting Directions

Note: Read assembly directions before cutting patches. All measurements are cut sizes and include 1/4" seam allowances. WOF designates the width of fabric from selvedge to selvedge (approximately 42" wide).

For 1 Block:

From a bright print:

- Cut (1) rectangle 1 1/2" x 8 1/2"
- Cut (1) rectangle 1 1/2" x 7 1/2"
- Cut (1) rectangle 1 1/2" x 6 1/2"
- Cut (1) rectangle 1 1/2" x 5 1/2"
- Cut (1) rectangle 1 1/2" x 4 1/2"
- Cut (1) rectangle 1 1/2" x 3 1/2"

From a dark print:

- Cut (1) rectangle 1 1/2" x 9 1/2"
- Cut (1) rectangle 1 1/2" x 8 1/2"
- Cut (1) rectangle 1 1/2" x 7 1/2"
- Cut (1) rectangle 1 1/2" x 6 1/2"
- Cut (1) rectangle 1 1/2" x 5 1/2"
- Cut (1) rectangle 1 1/2" x 4 1/2"

From Fabric A or Fabric B:

- Cut (1) square 3 1/2"

Fabric Requirements

| | | Yardage | Fabric |
|-------------------|---------|---------------|----------------|
| Fabric A | blocks | 3/8 yard | 8538-K |
| Fabric B | blocks | 1/4 yard | 8538-N |
| Fabric C | binding | 1 yard | 8478-K |
| 12 Brights | blocks | 1/2 yard each | |
| | 8539-K | *8539-N | 8540-N 8540-O |
| | 8540-R | 8541-O | 8541-Y 8542-R |
| | 8542-Y | 8543-O | 8544-K 8544-L |
| 13 Darks | blocks | 1/2 yard each | |
| | 8475-K | 8475-K1 | 8476-K 8476-K1 |
| | 8477-K | 8477-K1 | 8478-K1 8479-K |
| | 8479-K1 | 8480-K | 8480-K1 8481-K |
| | 8481-K1 | | |
| Backing | | 4 1/2 yards | *8539-N |

Fabric A

- Cut (21) squares 3 1/2" for block centers
- Cut (4) squares 4 1/2" for border corners

Fabric B

- Cut (21) squares 3 1/2" for block centers

Fabric C

- Cut (7) strips 2 1/2" x WOF for binding
- Cut (6) Template 1
- Cut "dark" patches for 3 blocks

12 Bright Prints

- Cut (4) total Template 2
- Cut (4) total Template 2 reversed

From each print:

- Cut patches for 3-4 blocks (42 blocks total)
- Cut (6 or 7) Template 1 (74 total)

13 Dark Prints

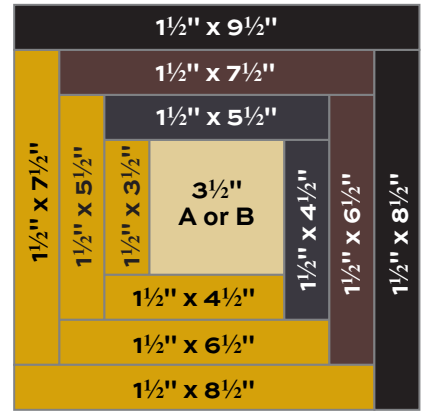
From each print:

- Cut patches for 3-4 blocks (39 blocks total)
- Cut (6 or 7) Template 1 (72 total)

Marmalade Quilt

Making the Quilt

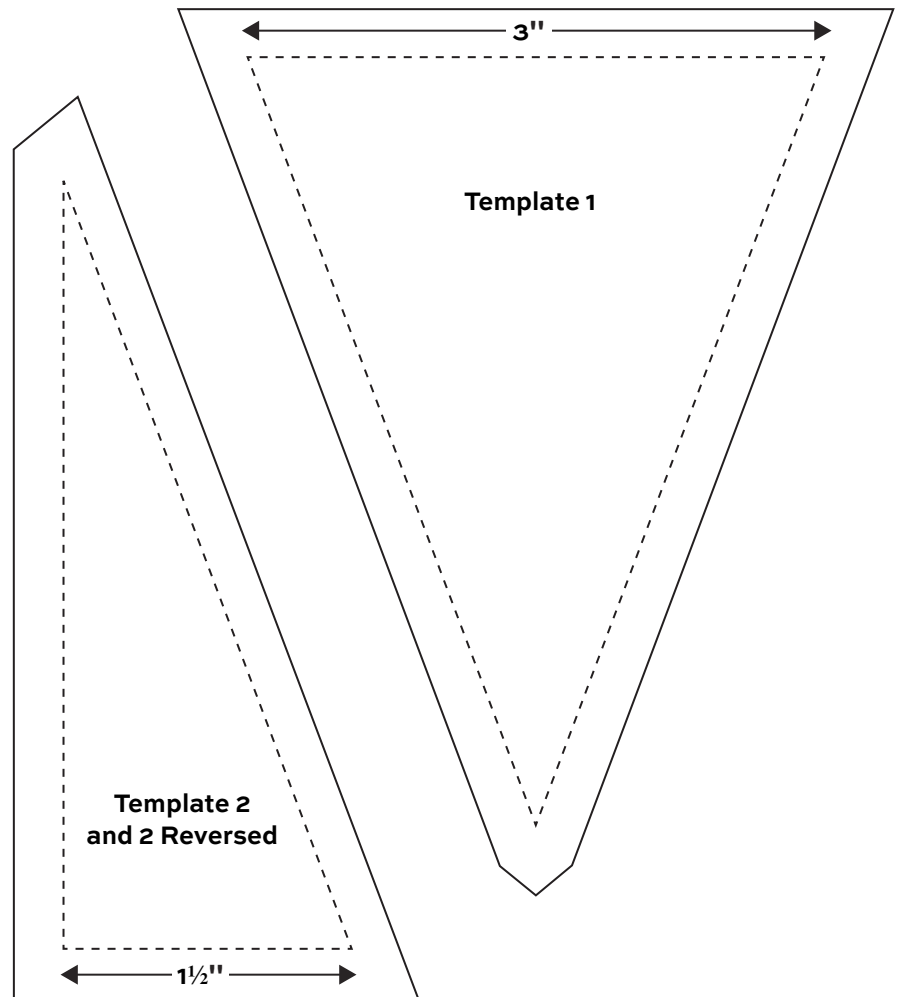
1. Note that a block is made with the same bright print in all 6 patches, but the 6 dark patches use 3 different prints. For instance, use one dark print in "round 1"-the 4½" and 5½" strips. Use a different dark print in "round 2"-the 6½" and 7½" strips, and a third dark print in the outer 8½" and 9½" strips. Referring to the block diagram, sew the 12 strips counterclockwise around a Fabric A or Fabric B square, beginning with the bright 3½" strip. Hint: Sew 2 bright strips and then 2 dark strips in each "round." Press all seam allowances away from the center. Make 42 blocks.
2. Referring to the Quilt Diagram, arrange the blocks in 7 horizontal rows of 6 blocks each, alternating Fabric A and Fabric B centers. Rotate the blocks as shown, noting the orientation of the bright strips. Join the rows.
3. Mark the sewing lines on the wrong side of each Template 1 and Template 2 patch. To make the side border, join 21 dark Template 1 patches alternately with 20 bright Template 1 patches, aligning sewing lines at the corners. Sew a Template 2 and a Template 2 reversed patch to the appropriate end. Repeat to make a second border. Sew to the sides of the quilt with the bright patches touching the quilt.
4. Likewise, make the top border with 18 dark and 17 bright Template 1 patches. Sew Template 2 and Template 2 reversed patches to the ends. Add a Fabric A 4½" square to each end. Sew to the top of the quilt.



Block Diagram

Finishing the Quilt

5. Layer the quilt with batting and backing and baste. Quilt in the ditch around block and border patches. Quilt around the printed motifs in the block centers if desired. Bind to finish the quilt.



Marmalade Quilt



Marmalade

BY KATHY HALL



8538-K



8538-N



8539-K



8539-N



8540-N



8540-O



8540-R



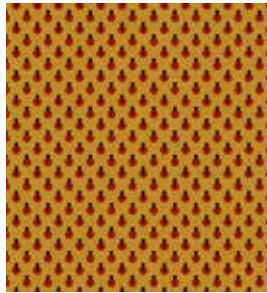
8541-O



8541-Y



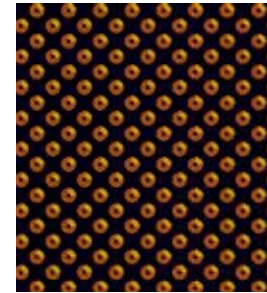
8542-R



8542-Y



8543-O



8544-K



8544-L

Blend with fabrics from lampblack 2017 by Kathy Hall



8475-K



8476-K



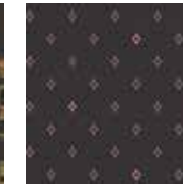
8477-K



8478-K



8479-K



8480-K



8481-K



8475-K1



8476-K1



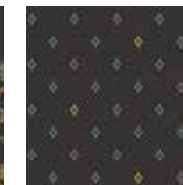
8477-K1



8478-K1



8479-K1



8480-K1



8481-K1

All fabrics are used in quilt pattern. Fabrics shown are 50% of actual size.

andover



makower uk
The Henley Studio

Free Pattern Download Available

1384 Broadway New York, NY 10018
Tel. (800) 223-5678 • andoverfabrics.com

Revised 1/15/17