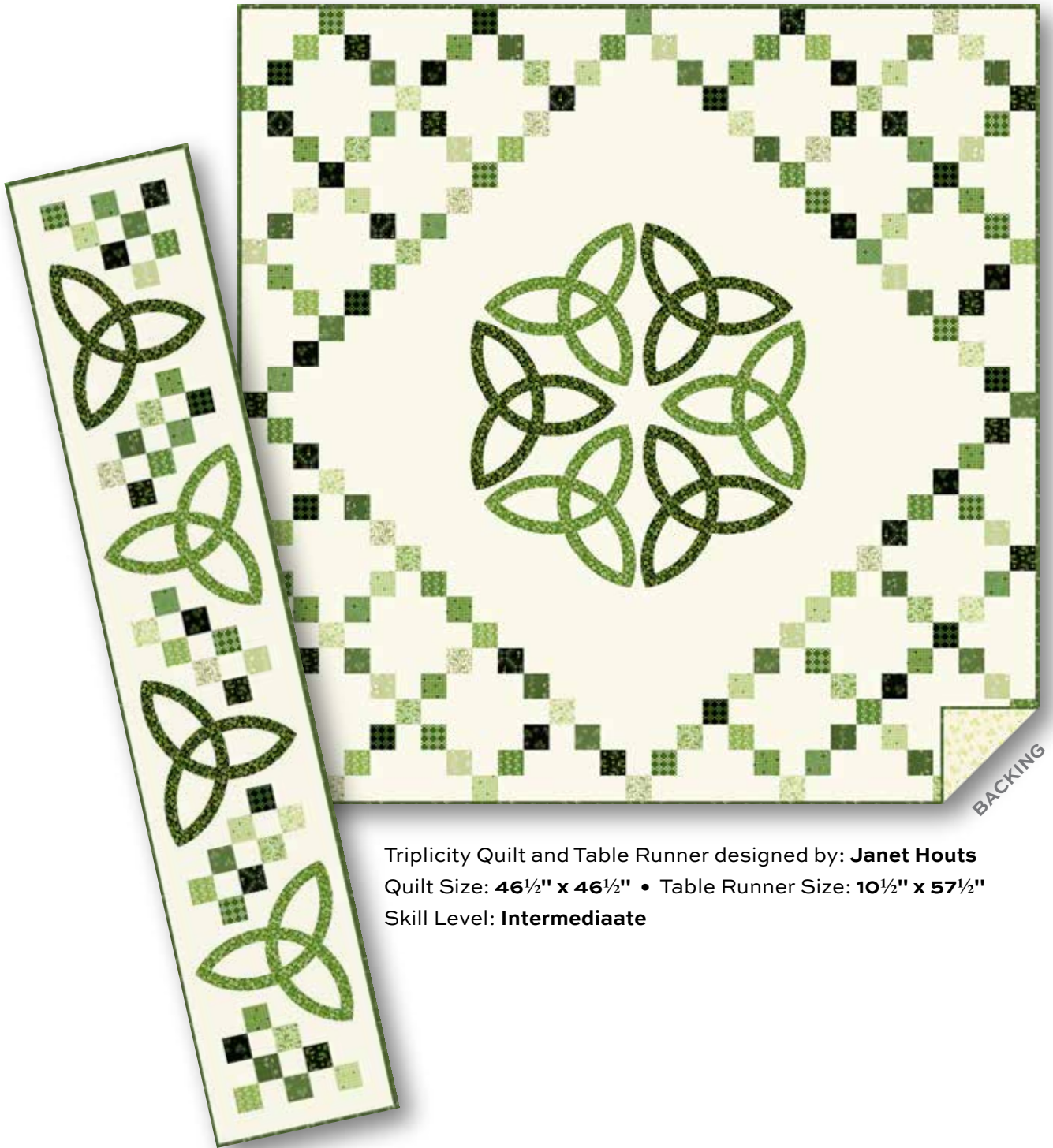


Lucky Charms

ANDOVER FABRICS

a
100
years



Triplicity Quilt and Table Runner designed by: **Janet Houts**
Quilt Size: **46½" x 46½"** • Table Runner Size: **10½" x 57½"**
Skill Level: **Intermediaate**

andover • makower uk

Free Pattern Download Available

1384 Broadway New York, NY 10018
Tel. (800) 223-5678 • andoverfabrics.com

3/15/22

Triplicity Quilt

Introducing Andover Fabrics new collection: **LUCKY CHARMS** by Andover Fabrics

Quilt designed by Janet Houts



Quilt finishes 46½" x 46½"

Table Runner Size: 10½" x 57½"

May the luck o' the Irish be with you when you make either or both of these delightful projects. In the wall quilt, Celtic knot applique is framed by a modified Irish Chain patchwork. The table runner is perfect for your St. Patty's day celebrations, or it could be a door decoration for that fun holiday. Attention to the piecing order will ensure success.

Cutting Directions

Note: Read assembly directions before cutting patches. All measurements are cut sizes and include ¼" seam allowances. A fat ⅛ is a 9" x 20"-22" cut of fabric. A fat ¼ is an 18" x 20"-22" cut. WOF designates the width of fabric from selvedge to selvedge (approximately 43" wide).

Fabric Requirements

Quilt		Yardage	Fabric
Fabric A	setting	2 yards	CS-10-Snow
2 Greens	applique	¾ yard each	
		414-G	414-K
Binding		¾ yard	411-G
Backing		3¼ yards	410-L

Table Runner

Fabric A	setting	¾ yard	CS-10-Snow
2 Greens	applique	fat ¼ yard each	
		414-G	414-K
Binding		¾ yard	411-G
Backing		1 yard	410-L

*Quilt and/or Table Runner

16 Greens	blocks	fat ⅛ yard each	
409-G	409-K	410-G	410-K
411-G	411-LG	412-G	412-K
413-G	413-LG	414-L	415-G
415-K	415-L	416-G	416-LG

*Yardage for fat ⅛ fabrics is sufficient to make both the quilt and the table runner.

Cutting for Quilt

Fabric A

Cut (1) square 23" x 23"
Cut (4) strips 2" x 20"
Cut (4) strips 2" x 17"
Cut (4) strips 2" x 14"
Cut (4) strips 2" x 11"
Cut (36) strips 2" x 8"
Cut (56) strips 2" x 5"
Cut (4) strips 2" x 3½"
Cut (56) squares 2" x 2"

2 Greens From each:

Cut (3) applique knots

16 Greens From each:

Cut (10-11) squares 2" (164 total)

Binding

Cut (5) strips 2½" x WOF for binding

Backing

Cut (2) lengths 28" x 55", pieced to fit quilt top with overlap on all sides

Cutting for Table Runner

Fabric A

Cut (2) strips 2" x 55"
Cut (4) strips 2" x 14½"
Cut (4) strips 2" x 11½"
Cut (2) strips 2" x 11"
Cut (8) strips 2" x 8½"
Cut (4) strips 2" x 5½"
Cut (19) squares 2" x 2"

2 Greens From each:

Cut (2) applique knots

16 Greens From each:

Cut (2-3) squares 2" (40 total)

Binding

Cut (4) strips 2½" x WOF for binding

Backing

Cut (2) lengths 19" x 33", pieced to fit quilt top with overlap on all sides

Making the Quilt

Print applique at 100%

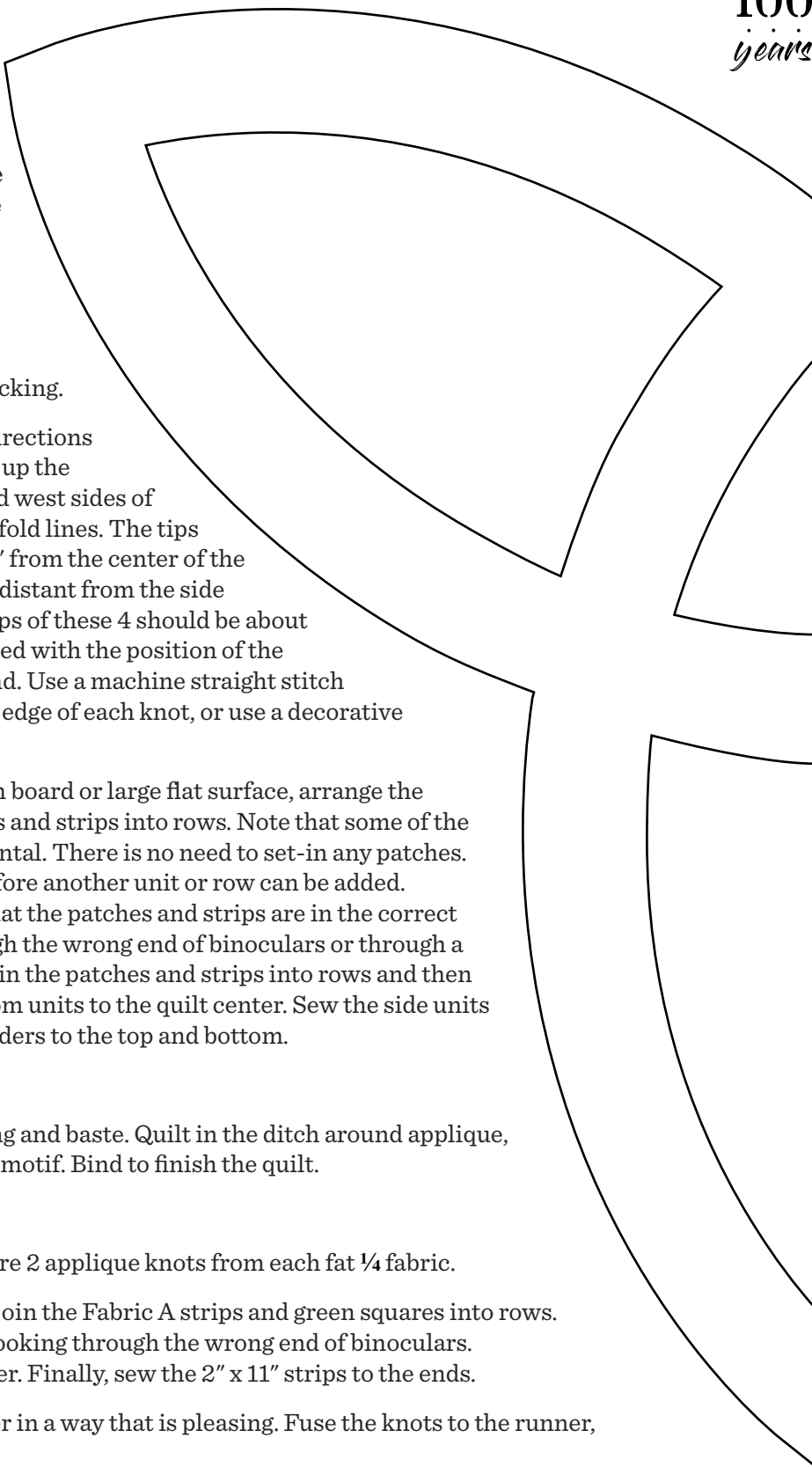
1. The Irish “knot” applique is fused to the Fabric A center square. Following manufacturer’s directions, press a piece of fusible web cut approximately 11” x 25” to the wrong side of each of the 2 green prints. Make an acrylic or cardboard template of the knot, including the cut-out portions. Draw around the template to mark 3 knots on each of the 2 green prints. Cut out the knots, using sharp pointed scissors to remove the fabric from the cut-out portions. Remove the paper backing.
2. Fold the Fabric A square in half both directions and lightly finger press the folds. Open up the square. Position 2 knots on the east and west sides of the square, centered on the horizontal fold lines. The tips of these two knots should be about 2½” from the center of the square. Position the other 4 knots equidistant from the side knots and the vertical fold lines. The tips of these 4 should be about 2” from the center. Once you are satisfied with the position of the motifs, fuse the knots to the background. Use a machine straight stitch with invisible thread to stitch near the edge of each knot, or use a decorative stitch with matching thread.
3. Refer to the Quilt Diagram. On a design board or large flat surface, arrange the green squares and the Fabric A squares and strips into rows. Note that some of the rows are vertical and others are horizontal. There is no need to set-in any patches. Some rows must be joined together before another unit or row can be added. Stand back continually to be certain that the patches and strips are in the correct positions. Looking at the design through the wrong end of binoculars or through a camera may help you find mistakes. Join the patches and strips into rows and then into larger units. Sew the top and bottom units to the quilt center. Sew the side units to the quilt. Finally, sew the pieced borders to the top and bottom.

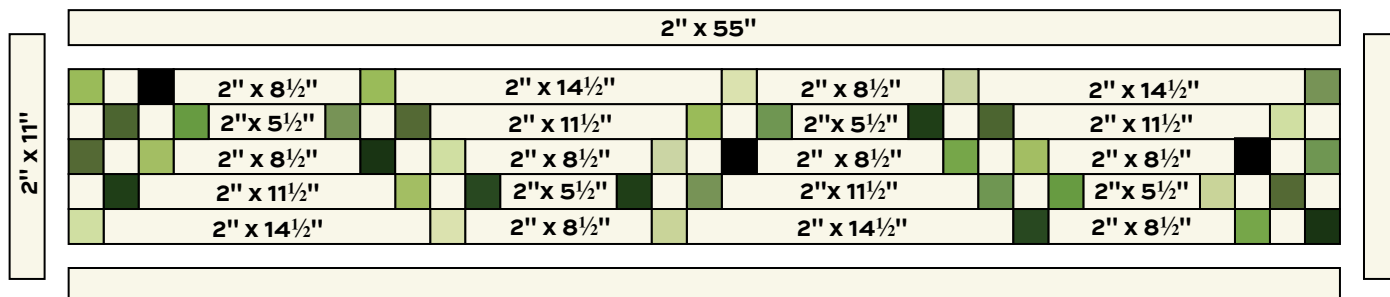
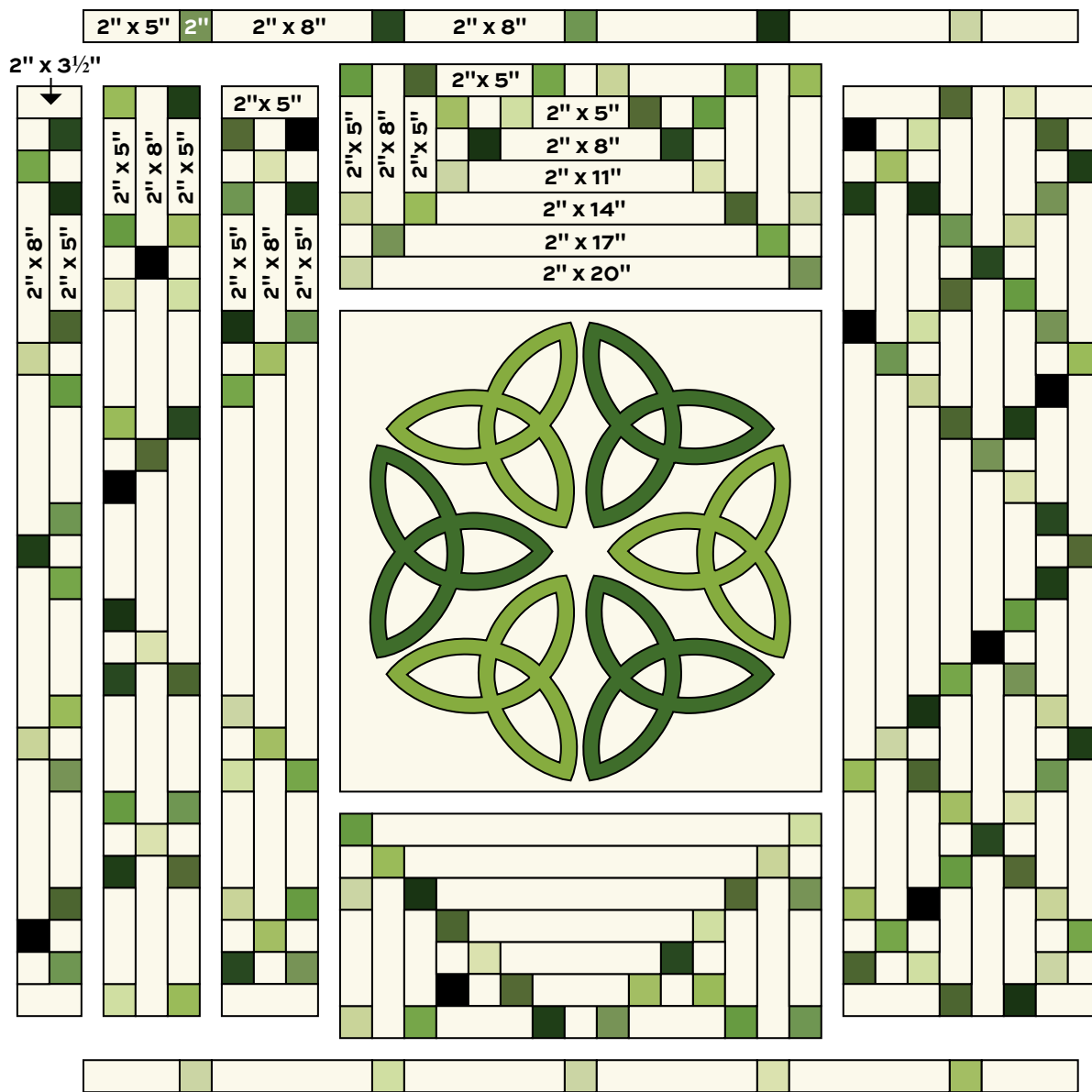
Finishing the Quilt

4. Layer the quilt with batting and backing and baste. Quilt in the ditch around applique, strips, and patches. Or, quilt an overall motif. Bind to finish the quilt.

Making the Table Runner

1. Refer to the steps for the quilt to prepare 2 applique knots from each fat ¼ fabric.
2. Refer to the Table Runner Diagram to join the Fabric A strips and green squares into rows. Pay attention to the overall design by looking through the wrong end of binoculars. Join the pieced rows to make the runner. Finally, sew the 2” x 11” strips to the ends.
3. Position the 4 knots on the table runner in a way that is pleasing. Fuse the knots to the runner, and finish them as described above.
4. Refer to Step 4 above to finish.





Lucky Charms

ANDOVER FABRICS

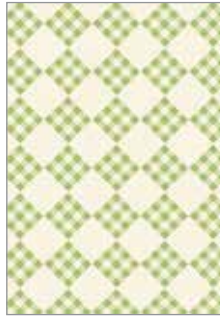
a
100
years



409-G*



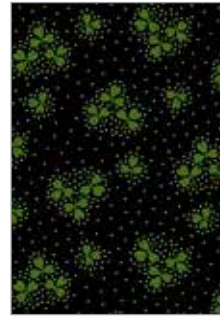
409-K*



409-L



410-G*



410-K*



410-L*



411-G*



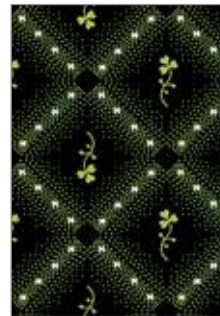
411-L



411-LG*



412-G*



412-K*



412-L



413-G*



413-L



413-LG*



414-G*



414-K*



414-L*



415-G*



415-K*



415-L*



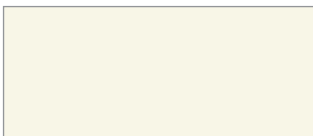
416-G*



416-L



416-LG*



CS-10-Snow*
from Century Solids
by Andover Fabrics

*Indicates fabrics used in quilt pattern.
Fabrics shown are 50% of actual size.

andover : makower uk

Free Pattern Download Available

1384 Broadway New York, NY 10018
Tel. (800) 223-5678 • andoverfabrics.com

3/15/22