

Love Notes



Quilt designed by Jean Ann Wright

Quilt size: 51" x 69"



makower uk

1384 Broadway
New York, NY 10018
(800) 223-5678

www.andoverfabrics.com



Fabrics by
echo park paper co.

Revised 1/31/13

Love Notes Quilt

Introducing Andover Fabrics new collection: Love Notes by Echo Park
Quilt designed by Jean Ann Wright

Quilt finishes 51" x 69"
6 Block X: 12" x 12"
6 Block Y: 6" x 12"
6 Block YY: 6" x 12"
3 Block Z: 6" x 6"
3 Block ZZ: 6" x 6"

How many ways can you tell someone he or she is important to you? The novelty alphabet fabric, printed in a romantic and fanciful lettering, is used in pieced blocks to send messages of love to that special someone. The blocks go together quickly to make a quilt that's just the right size to wrap up in or hang on a wall.

Fabric Requirements

		Yardage	
Fabric A	border, block Y	2 $\frac{2}{3}$ yards	5879-M
Fabric B	border, binding	1 yard	5880-M
*Fabric C	block YY	$\frac{1}{4}$ yard	5881-M
Fabric D	block X	$\frac{1}{2}$ yard	5882-M
Fabric E	block Z	Fat $\frac{1}{8}$ yard	5883-E
Fabric F	block ZZ	Fat $\frac{1}{8}$ yard	5883-T
Fabric G	block YY	$\frac{3}{8}$ yard	5884-G
Fabric H	block Z	Fat $\frac{1}{8}$ yard	1867-E5
Fabric I	block X	$\frac{3}{8}$ yard	1867-E17
Fabric J	blocks X & ZZ	$\frac{1}{2}$ yard	1867-T13
Fabric K	block Y	$\frac{3}{8}$ yard	1867-Y19
*Backing		3 $\frac{1}{2}$ yards	5881-M

Cutting Directions

Note: All measurements are cut sizes and include $\frac{1}{4}$ " seam allowances. A fat $\frac{1}{8}$ is a 9" x 20"-22" cut of fabric. Borders are cut the exact lengths required plus $\frac{1}{4}$ " seam allowances. WOF designates the width of fabric from selvedge to selvedge (approximately 42" wide).

Fabric A Fussy cut (2) side borders 6 $\frac{1}{2}$ " x 69 $\frac{1}{2}$ " (see Step 1)
Fussy cut (2) top/bottom borders 6 $\frac{1}{2}$ " x 39-1 $\frac{1}{2}$ " (see Step 1)
Cut (18) squares 3 $\frac{1}{2}$ " x 3 $\frac{1}{2}$ "

Fabric B Cut (2) borders 2" x 54 $\frac{1}{2}$ ", cut crosswise and pieced
Cut (2) borders 2" x 39 $\frac{1}{2}$ ", cut crosswise and pieced
Cut (7) strips 2 $\frac{1}{2}$ " x WOF for binding

Fabric C Cut (6) rectangles 3 $\frac{1}{2}$ " x 9 $\frac{1}{2}$ ", cut crosswise

Fabric D Cut (6) squares 7 $\frac{1}{2}$ " x 7 $\frac{1}{2}$ "

Fabric E Cut (6) rectangles 2 $\frac{1}{2}$ " x 6 $\frac{1}{2}$ "
Cut (6) squares 2 $\frac{1}{2}$ " x 2 $\frac{1}{2}$ "

Fabric F Cut (6) rectangles 2 $\frac{1}{2}$ " x 6 $\frac{1}{2}$ "
Cut (6) squares 2 $\frac{1}{2}$ " x 2 $\frac{1}{2}$ "

Fabric G Cut (12) rectangles 2" x 9 $\frac{1}{2}$ "
Cut (12) rectangles 2" x 6 $\frac{1}{2}$ "

Fabric H Cut (3) squares 2 $\frac{1}{2}$ " x 2 $\frac{1}{2}$ "

Fabric I Cut (12) rectangles 1 $\frac{1}{2}$ " x 9 $\frac{1}{2}$ "
Cut (12) rectangles 1 $\frac{1}{2}$ " x 7 $\frac{1}{2}$ "

Fabric J Cut (12) rectangles 2" x 12 $\frac{1}{2}$ "
Cut (12) rectangles 2" x 9 $\frac{1}{2}$ "
Cut (3) squares 2 $\frac{1}{2}$ " x 2 $\frac{1}{2}$ "

Fabric K Cut (12) rectangles 2" x 9 $\frac{1}{2}$ "
Cut (12) rectangles 2" x 6 $\frac{1}{2}$ "

Backing Cut (2) panels 39" x 59", pieced to fit quilt top with overlap on all sides

Making and Assembling the Quilt

1. Individual letters that make up the words in Block Y's are cut from leftover Fabric A after the borders are cut as follows: Look at the quilt photograph for reference. From the selvedge edge of Fabric A yardage, fussy cut a lengthwise border that is 2 printed squares wide (plus seam allowances). Begin the cut at the end of your yardage. The border strip should be 23 letters long plus $\frac{1}{4}$ " seam allowances all around (approximately 6 $\frac{1}{2}$ " x 69 $\frac{1}{2}$ "). Do not cut into surrounding fabric. Likewise, fussy cut a second lengthwise border from the other selvedge edge that is also 6 $\frac{1}{2}$ " x 69 $\frac{1}{2}$ ".

Love Notes Quilt

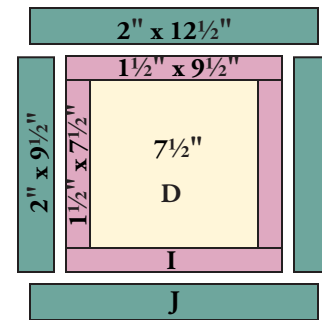
From the yardage that remains between the two cut edges, fussy cut 4 border strips crosswise from edge to edge, including seam allowances along the long sides. Each strip should be approximately $6\frac{1}{2}'' \times 24''$. It doesn't matter which part of the printed alphabet you cut these as long as the strips are centered on the printed squares. You need to join two strips to make the top border. On one end of a strip, cut $\frac{1}{4}''$ beyond the printed squares. On the opposite end of a second strip, cut $\frac{1}{4}''$ from the printed squares. Sew the 2 strips end to end so the print is continuous. You can cut the border to the right length now or wait until time to add it to the quilt in Step 8. Make the bottom border in the same way.

From the remainder of the yardage, mark the lettering needed for the words in Block Y's with pieces of tape or pins. Note that each letter must not touch any other letter since you must cut the squares out with seam allowances. You need these letters to duplicate the quilt: B, E, E, F, F, H, H, I, L, O, R, S, S, U, U, V, Y, Y. Once you have marked all the letters, center and cut them into $3\frac{1}{2}''$ squares and set aside. Feel free to change the messages as the letters allow. Consider piecing your initials or the initials of the person you are making the quilt for. Look at the quilt photograph for reference.

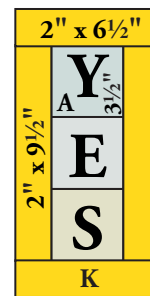
- Referring to the Block X diagram, sew short Fabric I strips to opposite sides of Fabric D $7\frac{1}{2}''$ squares. Sew long Fabric I strips to top and bottom of squares. Press seam allowances away from the center. Repeat to add Fabric J strips. Make 6 Block X's.
- Referring to the Block Y diagram, join 3 letters cut in Step 1 to form a word. Sew the long Fabric K strips to the sides and the short strips to the top and bottom. Make 6 Block Y's.
- To make Block YY, sew long Fabric G strips to each Fabric C $3\frac{1}{2}'' \times 9\frac{1}{2}''$ patch, and sew short Fabric G strips to the remaining sides. Make 6 Block YY's.
- Sew Fabric E strips to Fabric H squares to make 3 Block Z's. Sew Fabric F patches to Fabric J squares to make 3 Block ZZ's.
- The blocks are assembled into larger units, and the units are joined together. Referring to the Quilt Diagram, join 1 of each kind of block into a square unit as shown in the top left of the quilt center, being careful to orient the Y block so that the lettering is upright. Make 2 more units like this. Make 3 square units like the one in the upper right corner of the quilt center, again orienting the lettering upright. Join 2 units into a horizontal row as shown. Make 3 horizontal rows. Join the rows in the order shown.
- Sew long Fabric B borders to the sides and short borders to the top and bottom.
- Trim each top and bottom Fabric A border to 13 printed squares long ($6\frac{1}{2}'' \times 39\frac{1}{2}''$). Sew to the top and bottom of the quilt. Sew long Fabric A borders to the sides.

Finishing the Quilt

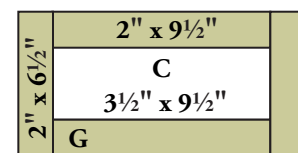
- Layer the quilt with batting and backing and baste. Quilt in the ditch around borders and block patches. Quilt around the letters in the blocks and outer border. Bind to finish the quilt.



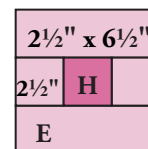
Block X
Make 6



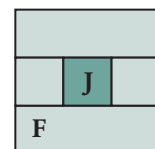
Block Y
Make 6



Block YY
Make 6



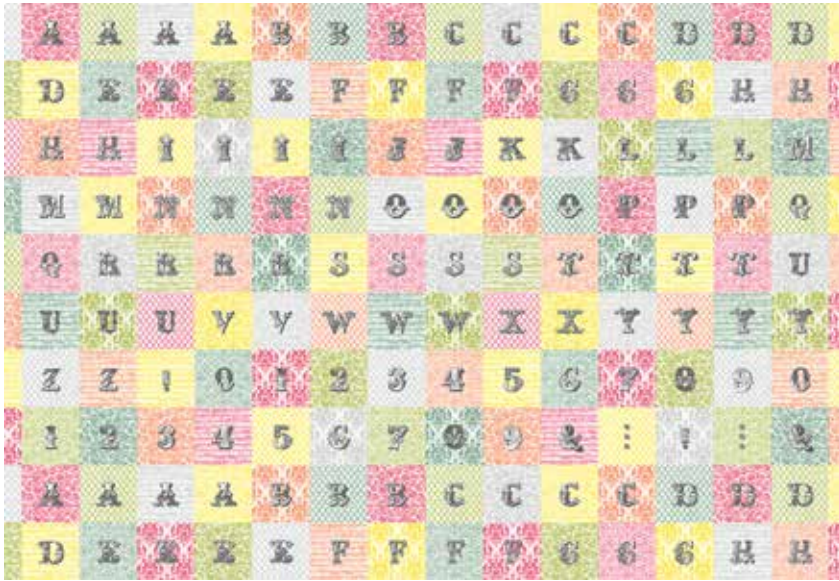
Block Z
Make 6



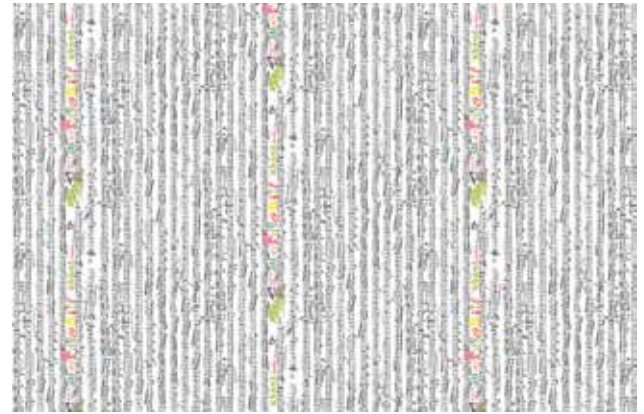
Block ZZ
Make 6

Love Notes

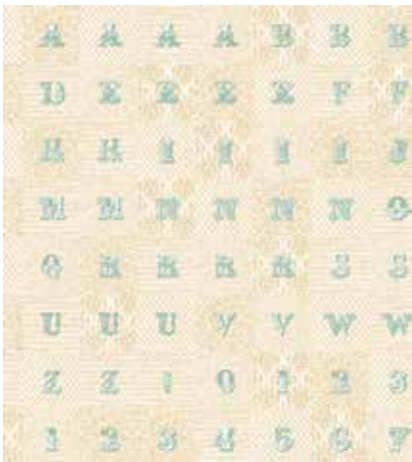
by Echo Park



5879-M*



5880-M*



5879-N



5879-C



5881-M*



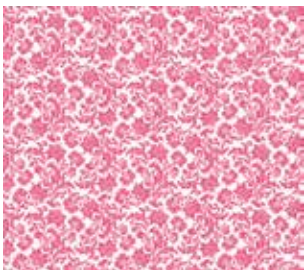
5881-N



5882-M*



5882-T



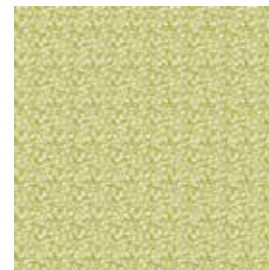
5883-E*



5883-T*



5884-C



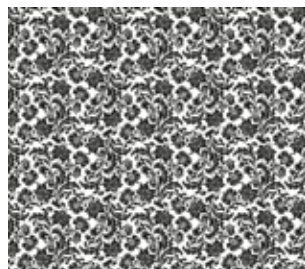
5884-G*



5884-O



5883-N



5883-K

From Dimples by Gail Kessler



1867-E17*



1867-E5*



1867-Y19*



1867-T13*

*Indicates fabric used in quilt pattern. Fabrics shown are 10% of actual size. *Free Pattern Download Available at www.andoverfabrics.com*