



licorice fizz

by CAROL VAN ZANDT



— Free Pattern Download Available —



makower uk

1384 Broadway
New York, NY 10018
(800) 223-5678
www.andoverfabrics.com

Designed by Carol Van Zandt
and Jean Ann Wright
Quilt size: 58½" x 72½"

5/25/12

Licorice Fizz Quilt

Introducing Andover Fabrics new collection: Licorice Fizz by Carol Van Zandt
Quilt designed by Jean Ann Wright from an idea by Carol Van Zandt

Quilt finishes 58½" x 72½"
12 Block X: 10" x 10"
6 Block Y: 10" x 10"
4 Block Z: 8" x 8"

Fun and funky are the words to describe the prints used in this monochromatic quilt. Stylized flowers, paisleys, and two unusual stripes—all in shades of gray and black—make a contemporary statement that is bold and dynamic. Pay attention to the orientation of the black and white striped print when you are piecing the quilt.

Fabric Requirements

		Yardage	
Fabric A	border	1¾ yards	5827-K
*Fabric B	blocks Y, Z units	¾ yard	5828-K
Fabric C	block X	¾ yard	5829-K
Fabric D	block Y, units	¾ yard	5830-K
Fabric E	block X	¾ yard	5831-KC
Fabric F	block Y, units	¼ yard	5831-K
Fabric G	block Y, units	1¼ yards	5832-K
Fabric H	block Z	¼ yard	5833-KC
Fabric I	borders, binding	1¾ yards	5833-K
*Backing		3¾ yards	5828-K

Cutting Directions

Note: All measurements are cut sizes and include ¼" seam allowances. Borders are cut the exact lengths required plus ¼" seam allowances.

Fabric A Cut (2) borders 6½" x 57", cut lengthwise
Cut (2) borders 6½" x 43", cut lengthwise

Fabric B Cut (1) square 7⅝" x 7⅝", cut in half diagonally twice to make
4 quarter-square triangles
Cut (4) squares 6½" x 6½"
Cut (6) squares 5" x 5"

Fabric C Cut (12) squares 8½" x 8½"

Fabric D Cut (16) squares 5" x 5"

Fabric E Cut (24) strips 1½" x 10½"
Cut (24) strips 1½" x 8½"

Fabric F Cut (6) strips 1½" x 10½"
Cut (16) strips 1½" x 5"
Cut (4) strips 1½" x 6¼"

Fabric G Cut (3) squares 15⅜" x 15⅜", cut in half diagonally twice to make
12 quarter-square triangles (half will be used)
Cut (2) squares 8" x 8", cut in half diagonally to make 4 half-square triangles (see Step 1)
Cut (2) squares 7⅝" x 7⅝", cut in half diagonally twice to make 8 quarter-square triangles (half will be used)
Cut (6) squares 5" x 5", cut on point

Fabric H Cut (8) strips 1½" x 8½"
Cut (8) strips 1½" x 6½"

Fabric I Cut (4) borders 1½" x 57", cut lengthwise
Cut (4) borders 1½" x 43", cut lengthwise
Cut (5) strips 2½" x 58" for binding, cut lengthwise

Backing (2) panels 41" x 67", pieced to fit quilt top with overlap on all sides

Making and Assembling the Quilt

- Referring to the cutting diagram for Fabric G, cut squares as indicated above. Note that the 5" squares are cut on point so that the stripe moves diagonally across the patches. The 8" squares are cut diagonally in mirror image. Set patches aside. When using Fabric G patches, look carefully at the illustrations and choose the correct patches so that the stripes are oriented correctly in the blocks, units, and quilt.

Licorice Fizz Quilt

- Referring to the Block X diagram, sew short Fabric E strips to sides of $8\frac{1}{2}$ " Fabric C square. Press strips away from the square. Sew long strips to top and bottom. Make 12 Block X.
- Referring to the Block Y diagram, sew the appropriate 5" squares (Fabrics G, D, and B) to sides of 12 Fabric F $1\frac{1}{2}$ " x 5" strips. Press seam allowances toward the strips. Sew a G/strip/D unit to one edge of a Fabric F $1\frac{1}{2}$ " x $10\frac{1}{2}$ " strip, being careful to orient the fabrics as shown. Sew a D/strip/B unit to the other edge. Make 6 Block Y.
- Make 4 Block Z as you did Block X, using Fabric B $6\frac{1}{2}$ " squares and Fabric H strips.
- To make a Setting Unit 1, sew a Fabric F $1\frac{1}{2}$ " x 5" strip to one edge of a Fabric D 5" square. Sew a Fabric G quarter-square triangle to the strip. Sew a Fabric F $1\frac{1}{2}$ " x $6\frac{1}{4}$ " strip to the adjacent side of the square. Sew a Fabric B quarter-square triangle to the strip. Trim the $6\frac{1}{4}$ " strip as needed so that the bottom (base) of the unit is even. Make 2 Setting Unit 1.

Likewise, make 2 Setting Unit 2, reversing the placement of the B and G triangles.

- Referring to the Quilt Diagram, make the first diagonal row: Sew a Unit 1 and a Fabric G $15\frac{3}{8}$ " quarter-square triangle to the sides of a Block X. (Be sure the stripe in the triangle is oriented correctly.) Press the seam allowances toward Block X. Make the second diagonal row: Sew Block X's to 2 sides of a Block Y, orienting the Block Y as shown. Sew a Unit 2 on one end and a Fabric G large triangle on the other end. Press seam allowances toward the Block X's.

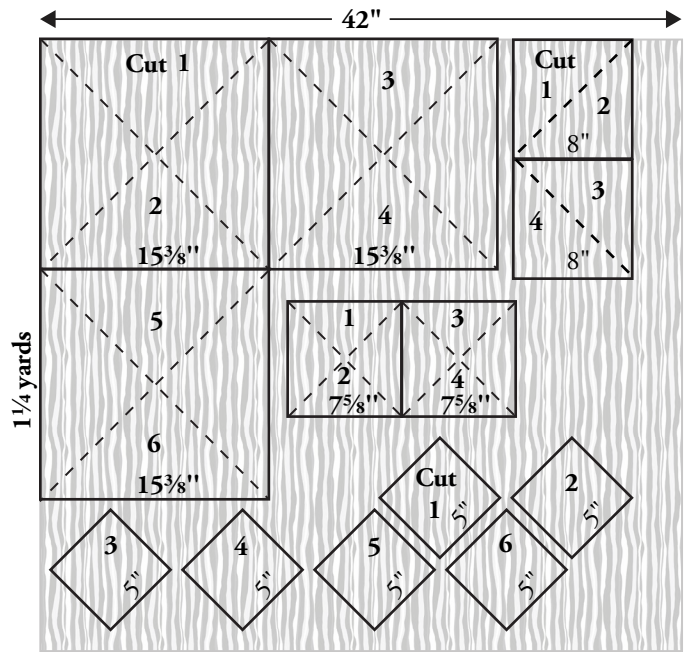
Continue to join blocks, units, and Fabric G quarter-square triangles to make diagonal rows. Be careful to keep the Block Y's oriented so that the Fabric G squares are in the correct position.

Once you have made all the diagonal rows, join them. Sew a Fabric G 8" half-square triangle to each corner, again noting orientation of the striped print.

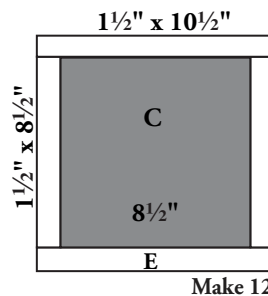
- Sew long Fabric I borders to long edges of long Fabric A borders. Sew to the sides of the quilt. Sew short borders together in the same way. Sew a Block Z to opposite ends of the short pieced borders. Sew to the top and the bottom.

Finishing the Quilt

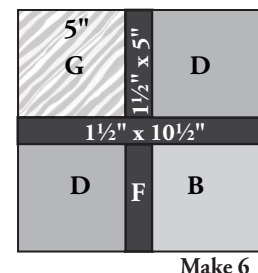
- Layer the quilt with batting and backing and baste. Quilt in the ditch around borders and block patches. Quilt around the printed motifs in the blocks and outer border. Quilt large Fabric G setting triangles as desired. Bind to finish the quilt.



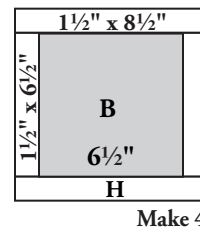
Cutting Fabric G



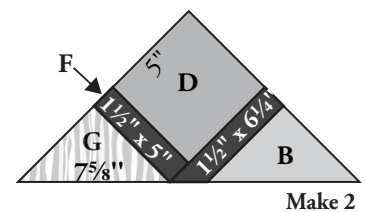
Block X



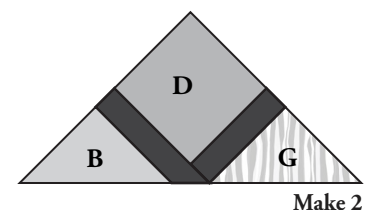
Block Y



Block Z

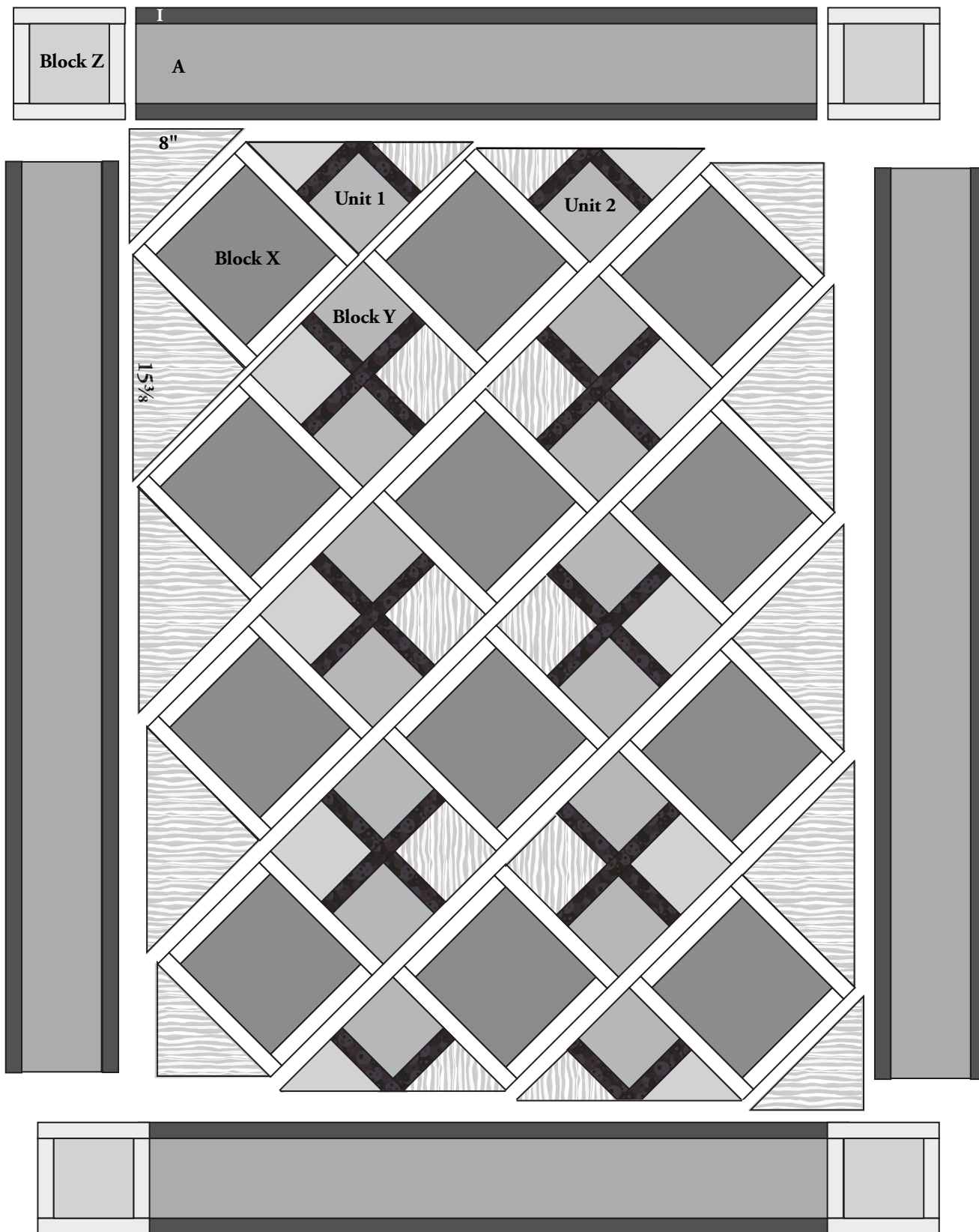


Setting Unit 1



Setting Unit 2

Licorice Fizz Quilt



Quilt Diagram

1384 Broadway
New York, NY 10018
(800) 223-5678
www.andoverfabrics.com

Licorice Fizz

by Carol Van Zandt



makower uk®



5827-K



5829-K



5828-K



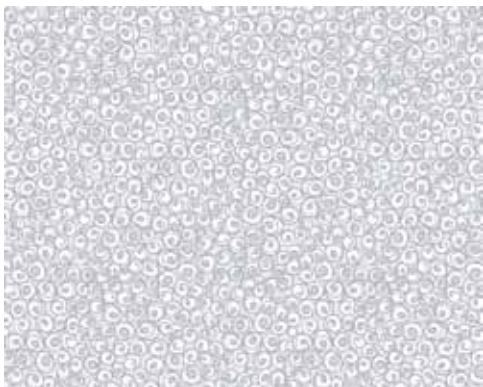
5830-K



5831-KC



5831-K



5833-KC



5833-K



5832-K

*Indicates fabric used in quilt pattern. Fabrics shown are 25% of actual size.

Free Pattern Download Available at www.andoverfabrics.com

5/25/12