

Kaleidoscope Stripes & Plaids

ALISON GLASS

a
100
years



Kaleidoscope Stars Quilt designed by: **Alison Glass** • Quilt Size: **50" x 60"**
Skill Level: **Beginner/Intermediate** with experience with paper-foundation piecing
andoverfabrics.com

andover • makower.uk

Free Pattern Download Available

1384 Broadway New York, NY 10018
Tel. (800) 223-5678 • andoverfabrics.com

Kaleidoscope Stars Quilt

Introducing Andover Fabrics new collection:

KALEIDOSCOPE STRIPES & PLAIDS by Alison Glass. Quilt designed by Alison Glass.



Quilt finishes 50" x 60"
30 Blocks: 10" x 10"

Subtle plaids and stripes in luscious sherbet colors frame the delightful little stars that adorn each block. Choose from two methods of construction to make this charming wall quilt.

Cutting Directions

Note: Read assembly directions before cutting patches. WOF designates the width of fabric from selvedge to selvedge (approximately 42" wide).

Light Cut (6) strips 2½" x WOF for binding
Cut (30) A2
Cut (30) B2
Cut (30) C2
Cut (30) B3

4 Plaids From each:
Cut (3) A1
Cut (3) B1
Cut (3) C3

4 Stripes From each:
Cut (3) A3
Cut (3) C1

2 Plaids From each:
Cut (4) A1
Cut (4) B1
Cut (4) C3

2 Stripes From each:
Cut (4) A3
Cut (4) C1

Grn. & Yl. From each:
Cut (5) A1
Cut (5) B1
Cut (5) C3

Grn. & Yl. From each:
Cut (5) A3
Cut (5) C1

Backing Cut (2) panels 35" x 58", pieced to fit quilt top with overlap on all sides

Fabric Requirements

		Yardage	Fabric
*Light	stars, binding	1½ yards	9541-Cloud
4 Plaids	blocks	½ yard each	9541-Denim
	9541-Magenta	9541-Sunrise	9541-Thistle
4 Stripes	blocks	¼ yard each	9540-Denim
	9540-Magenta	9540-Sunrise	9540-Thistle
2 Plaids	blocks	½ yard each	9541-Marmalade
	9541-Marmalade	9541-Teal	
2 Stripes	blocks	½ yard each	9540-Marmalade
	9540-Marmalade	9540-Teal	
Grn./Yl.	blocks	⅝ yard each	9541-Lichen
	9541-Lichen	9541-Sunshine	
Grn./Yl.	blocks	½ yard each	9540-Lichen
	9540-Lichen	9540-Sunshine	
*Backing		3½ yards	9541-Cloud

Also needed: 10½" or larger square acrylic ruler

Making the Quilt

If you are not certain which method suits you best, we suggest that you make a block with each technique, and then follow the directions for that method. The paper- foundation piecing method requires some previous experience with PFP. Note that each block is made with a pair of corresponding plaid and stripe fabrics.

Paper-Foundation Piecing

1. Copy each full-size PFP unit pattern 30 times on good quality 8½" x 11" tracing paper. It should feed through an ink-jet printer easily. The see-through paper allows correct alignment of the plaid and stripe prints, and it is easier to remove later. Note that the patterns are given in reverse for paper-foundation piecing.

2. Make a paper template of each finished patch (there will be 9 templates), including all the markings, but do *not* include seam allowances. Position a template on the wrong side of the appropriate fabric, aligning the grain line arrow with the plaid or stripe. Cut out the patch, adding ½" seam allowances all around by eye (Diagram 1). Keep the paper template pinned to the fabric patch to prevent mix-ups. Once the unit is stitched, you can use the same paper templates over and over.

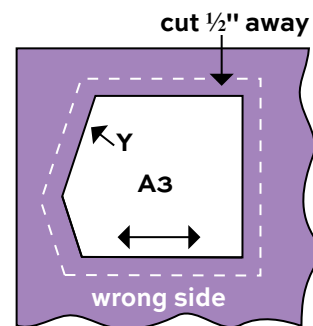
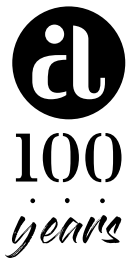
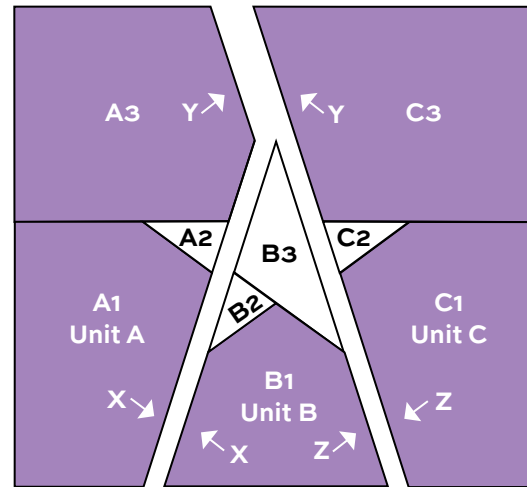


Diagram 1 – PFP

Kaleidoscope Stars Quilt



- Use PFP methods to join the 3 patches onto Unit A tracing paper pattern. (The fabric is positioned on the back side of the pattern, and the stitching is done on the printed side.) Use a short stitch length to facilitate paper removal later. Be sure to pin the fabric patches to the paper in several places to keep fabric from shifting. After joining a patch, trim the seam allowances to 1/4" at the sewn seam. Fold back the paper on the next stitching line, and trim the fabric to 1/4" seam allowance in preparation for adding the next patch. Stitch patches A1-3 to the paper pattern. Stitch Unit B in the same manner.
- Once the A and B units are stitched, trim along the solid outer line of the paper pattern just along the edges that have arrow "X". Join Unit A to Unit B, matching stitching lines. Be sure that the long edge to be stitched to Unit C is a straight line. Trim as needed.
- Stitch Unit C. Trim along the solid outer line of the edge with arrows Y and Z. Join Unit C to Unit A/B, matching sewing lines. Press the units. Use a large square acrylic ruler to trim the block to 10 1/2" square. Finally, remove the paper.



Traditional Piecing

- Make an acrylic template of each of the 9 patches, adding an exact 1/4" seam allowance on all sides. Add the positioning arrows (X, Y, Z), and grain line arrows. Make a small hole with a big needle along the stitching line at each corner. Position a template on the wrong side of the appropriate fabric, aligning the grain line arrow with the plaid or stripe (Diagram 2). With a sharp pencil, mark around the template on the fabric, and mark dots at the corners through the holes. Cut out the fabric patch. Repeat to cut patches for one block.
- Using traditional piecing methods, join the 3 patches for the unit, aligning the marked dots in the corners. Make Units A, B, and C for the block. Referring to the block diagram, join Unit A and Unit B. Be certain that the long edge is straight where Unit C will be added. Finally, join Unit C to Unit A/B. The block should measure 10 1/2" from edge to edge.

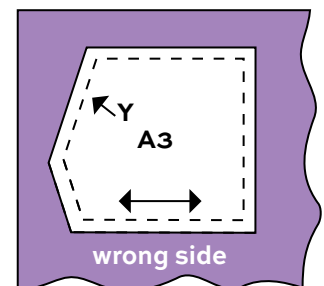


Diagram 2 - Traditional

Both Methods

- Once you are satisfied that your method results in a 10 1/2" block, make 30 blocks, following the quilt photograph for fabric placement.
- Referring to the Quilt Diagram, arrange the blocks in 6 rows of 5 blocks each. Once the design is as desired, join the blocks in rows. Press the seam allowances in opposite directions in alternating rows. Join the rows.

Finishing the Quilt

- Layer the quilt with batting and backing and baste. Quilt in the ditch around block patches. Quilt along the plaid and striped prints as desired. Bind to finish the quilt.

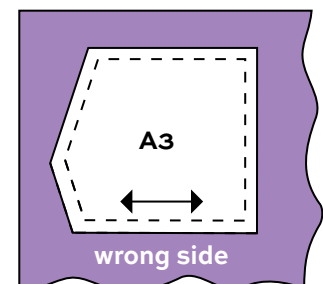
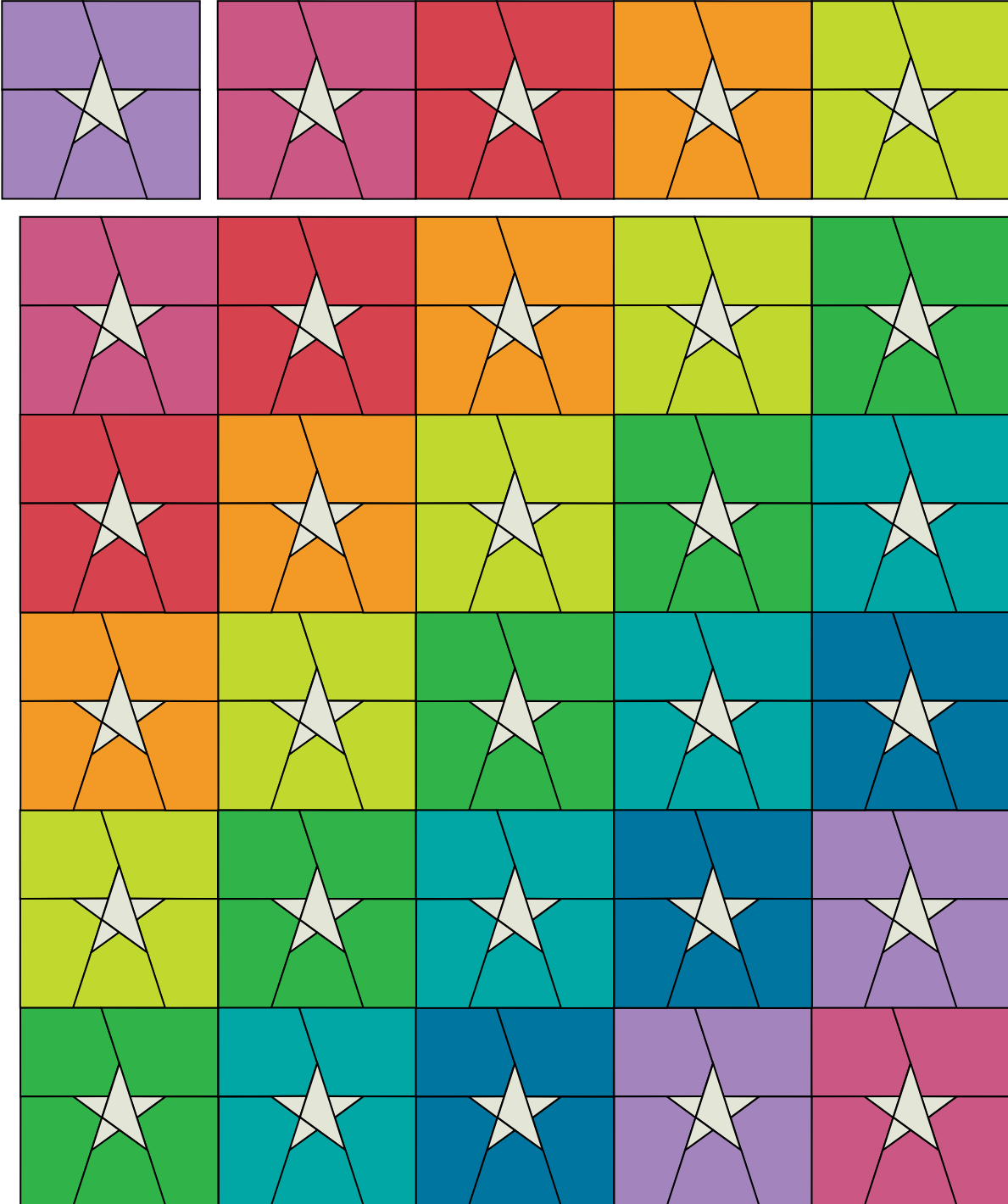
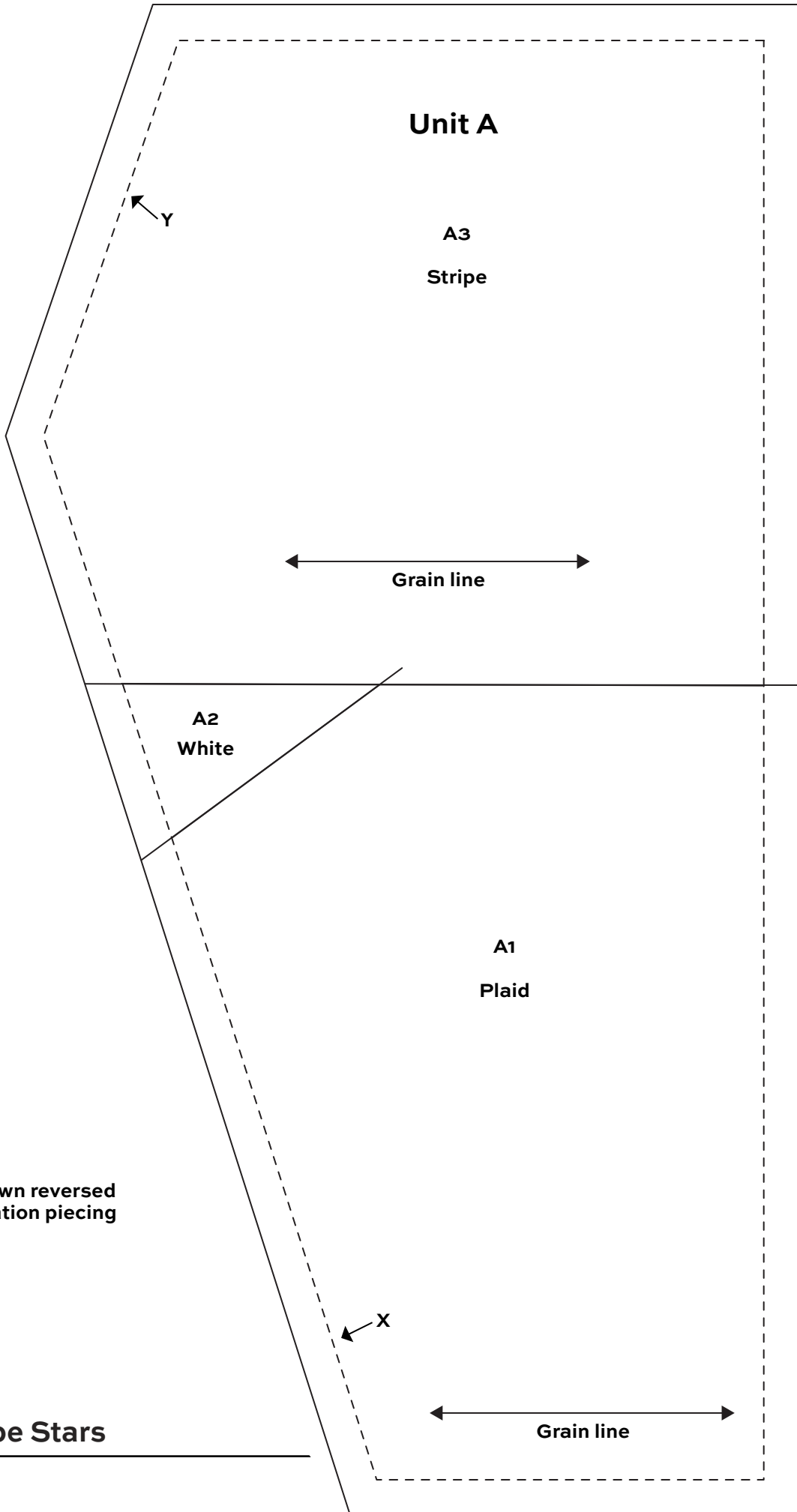


Diagram 2 - Traditional



Quilt Diagram



Unit A

A3

Stripe

Grain line

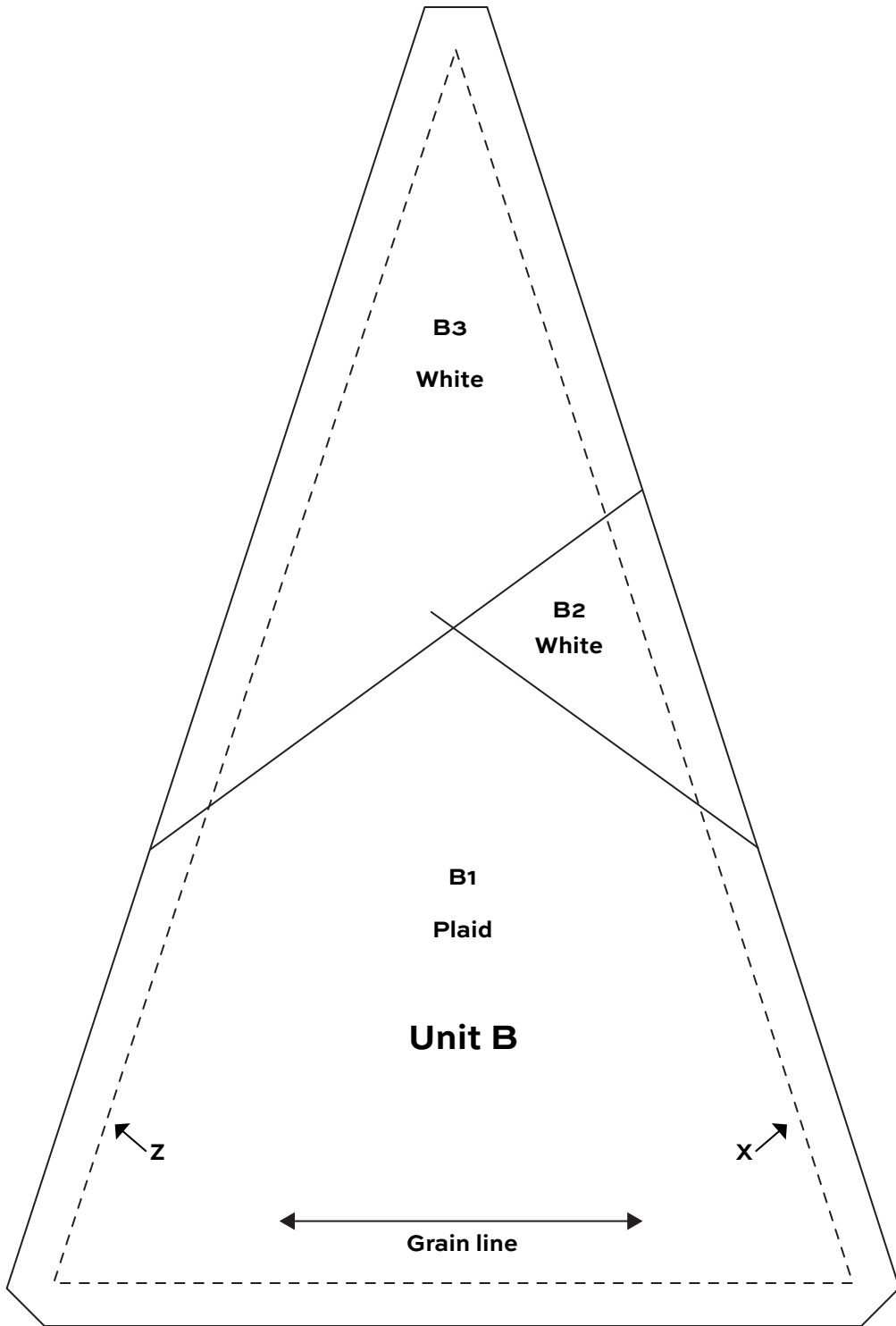
A2
White

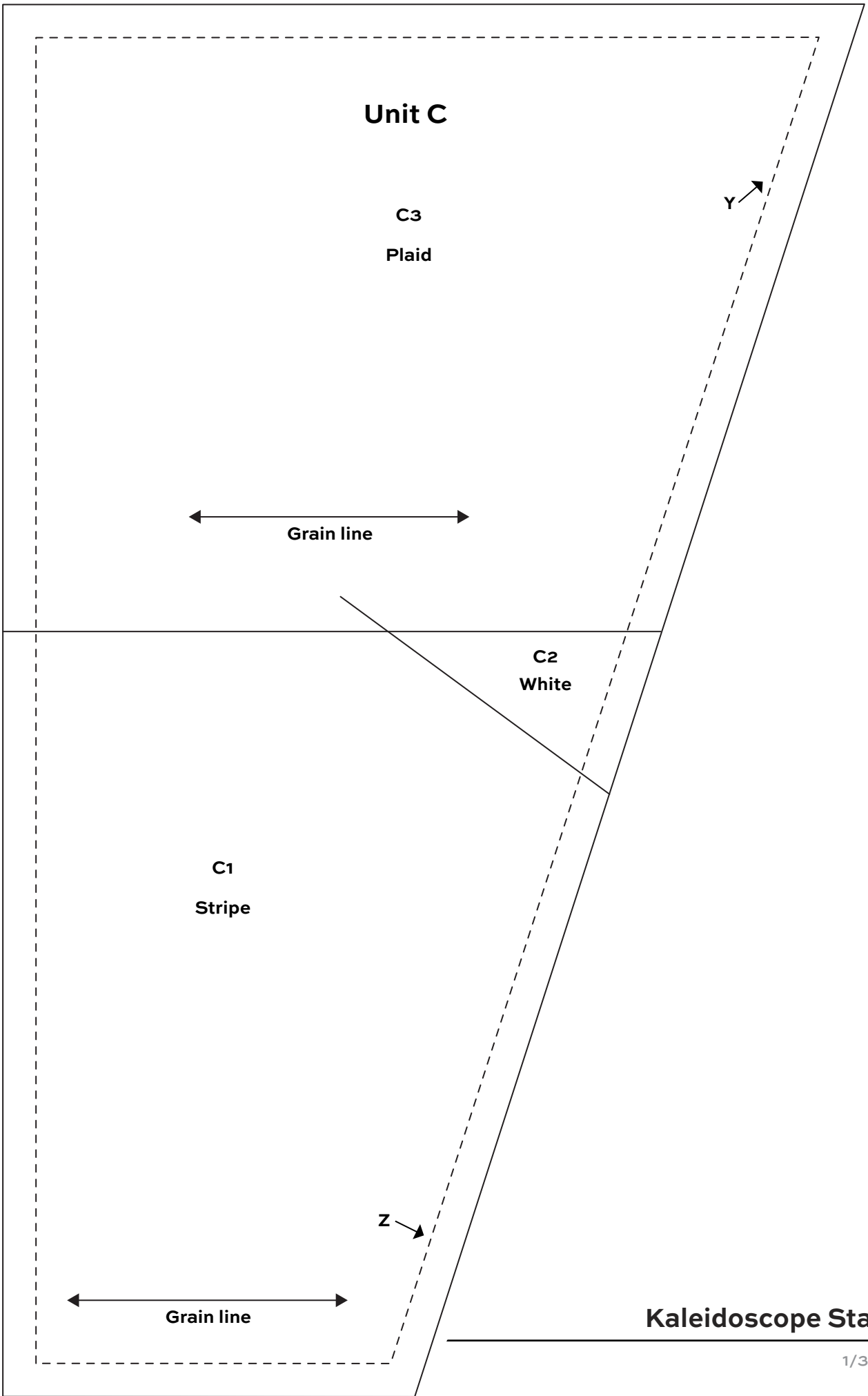
A1
Plaid

Grain line

Patterns are shown reversed
for paper-foundation piecing

Kaleidoscope Stars





Unit C

C3

Plaid

Y

Grain line

C2
White

C1
Stripe

Z

Grain line

Kaleidoscope Stars

Kaleidoscope

Woven Stripes & Plaids

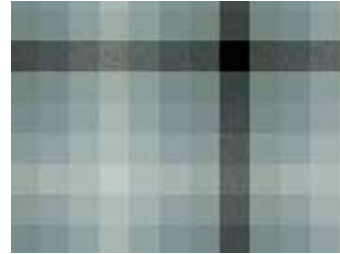
ALISON GLASS



9540-Charcoal



9540-Cloud



9541-Charcoal



9541-Cloud*



9540-Denim*



9540-Lichen*



9541-Denim*



9541-Lichen*



9540-Magenta*



9540-Marmalade*



9541-Magenta*



9541-Marmalade*



9540-Sunrise*



9540-Sunshine*



9541-Sunrise*



9541-Sunshine*



9540-Teal*



9540-Thistle*



9541-Teal*



9541-Thistle*

*Indicates fabrics used in quilt pattern. Fabrics shown are 25% of actual size.

andover  makower.uk

Free Pattern Download Available

1384 Broadway New York, NY 10018
Tel. (800) 223-5678 • andoverfabrics.com