

# Indigo Messenger Bag

A medium sized messenger bag with plenty of room for an i-pad, notebook and all those other day to day essentials.

Designed by Janet Goddard [www.patchworkpatterns.co.uk](http://www.patchworkpatterns.co.uk)

Finished Size 12" x 12" x 3" (30cm x 30cm x 7.5cm) excluding strap  
using the Indigo collection from Makower UK [www.makoweruk.com](http://www.makoweruk.com)




Bag A

Bag B

**makower uk**

Unit 14, Cordwallis Business Park, Clivemont Road,  
Maidenhead, Berkshire SL6 7BU +44(0)1628 509640  
[sales@makoweruk.com](mailto:sales@makoweruk.com) [www.makoweruk.com](http://www.makoweruk.com)

 **andover**

# Indigo Messenger Bag

A medium sized messenger bag with plenty of room for an i-pad, notebook and all those other day to day essentials.

Designed by Janet Goddard [www.patchworkpatterns.co.uk](http://www.patchworkpatterns.co.uk)

Finished Size 12" x 12" x 3" (30cm x 30cm x 7.5cm) excluding strap using the Indigo collection from Makower UK [www.makoweruk.com](http://www.makoweruk.com)

## **Fabric Requirements:**

Fabric	Useage	Bag A Light	Bag B Dark	Amount
Fabric One	Outer bag,	2154/Q	2154/B	45cms (18")
Fabric Two	Flap	2150/Q	2150/B	Fat ¼
Fabric Three	Bag lining, flap lining and inside pocket	2155/B	2152/Q	65cms (25")
Fabric Four	Strap loops and strap	2156/B7	2156/B3	20cms (8")
Other; 50cm (20") fusible wadding, One 30cm (12") square of medium weight iron on interfacing, two 2.5cm (1") rectangular metal rings				

## **Notes;**

- Read the pattern in full before starting.
- ¼" seams are used throughout.
- All fabrics quantities are cut width of fabric (WOF) and allow for one way designs.
- Take care when joining pieces from directional prints to ensure pattern is the correct way up.
- Make sure to visit <http://www.makoweruk.com/projects/> to ensure you are working from the most up-to-date version of the pattern.

## **Cutting Instructions:**

Fabric One:

Cut two (14" x 12 ¾") rectangle

Fabric Two:

Cut one (12") square

Fabric Three:

Cut two (14" x 12 ¼") rectangle

Cut two ( 5 ½" x 9") rectangles

Cut one (12") square

Fabric Four

Cut one (2 ½" x 42") strip

Cut one (2 ½" x 10") strip

Wadding:

Cut one (14" x 25") rectangle

Cut one (1" x 42") strip

Iron on Interfacing

Cut one (12") square

## **Sewing Instructions:**

### **To Stitch the Flap:**

1. Iron the interfacing to the reverse of the fabric two 12" square.
2. With right sides facing lay the fabric two and fabric three 12" squares on top of each other. Pin around all sides. Place an 8" diameter circle template or plate onto one bottom corner so that the edges of the template touch both the side and the bottom corner. Mark the curve. Repeat on the other corner. Cut along each curve.
3. Stitch all the way around leaving a 4" gap in the middle of the top edge, backstitching at the beginning and end. Clip corners and curves. Turn through, press and top stitch all the way around the outer edge.

### **To Stitch the Outer Bag:**

4. Stitch both fabric one rectangles together along one of the 14" edges ensuring that directional patterns face away from the seam line. Iron the (14" x 25") rectangle of fusible wadding to the reverse of the above rectangle.
5. Lay the flap right side up on the right side of the unit completed in step four, positioning the straight edge of the flap 1 ½" from the top 14" edge. The curved edge of the flap faces away from the outer bag. Stitch across the flap, securing the flap to the outer bag over the top of your previous stitches. Stitch across the flap again on the outer edge below the first line of stitching.
6. Fold the outer bag in half, right sides together, tucking the flap down inside, out of the way. Stitch down both sides.
7. To shape the base of the bag, match the centre seam of the base with each side seam. Measure in 1 ½" along the seam line from the outer point. Pin and draw a line with a marking pencil from edge to edge horizontally. Stitch on this line and then trim off excess fabric. Turn the bag right side out.

### **To Stitch the Strap and Strap Loops:**

8. To stitch the strap loops take the (2 ½" x 10") strip of fabric four and press under ¼" on each long edge. Fold in half so that the right side of the fabric is facing out and top stitch down the folded edge. Top stitch down the opposite edge also. Cut the strip in half to make two loops.
9. Insert each strap loop into a rectangular ring. Fold the loop in half, making sure that the raw edges are even. Stitch across the fabric ¼" away from the ring.
10. Pin a strap loop to each side of the outer bag, right sides facing, placing a loop over the centre of each side seam. Tack in place.
11. To stitch the strap take the (2 ½" x 42") strip of fabric four and press under ¼" on one long edge. Lay the (1" x 42") strip of fusible wadding down the centre of wrong side of the strap and iron in place.
12. Fold the raw edge of the fabric to the centre of the wadding and then the folded edge on top. The folded edge should overlap the raw edge. Pin in place. Top stitch down the folded edge. Top stitch along each outer edge. Put the strap to one side.

### **To Stitch the Lining:**

13. To stitch the pocket take the two fabric three (5 ½" x 9") rectangles and place them right sides facing. Stitch around the edge, leaving a 2" opening on one long side. Trim corners, turn through and press.
14. Take one of the (14" x 12 ¼") fabric three rectangle and position the pocket 4" from the top on the right side of the fabric Top stitch around three edges, leaving the top open. Stitch down the centre from top to bottom to make two small pockets.
15. Stitch the two fabric three rectangles together around three sides, leaving the top edge open and ensuring directional patterns face away from the seam line.
16. To shape the base of the lining in the same way as the outer bag follow the instructions in step seven.

### **To Stitch the Bag Together:**

17. Place the outer bag inside the lining so that the right sides of the fabric are facing. Make sure that the pocket on the lining is on the same side of the bag as the flap. The flap and strap loops are pushed down between the two layers. Pin the outer bag and the lining together at the top, lining up the side seams and raw edges.
18. Stitch around the top edge, leaving a 5" opening in the centre of the flap side for turning. Back stitch at the beginning and end.
19. Turn the bag through the opening and press the seam around the top edge of the bag so that it lays flat. Press under the seam allowance on the opening and then topstitch all the way around the top of the bag.
20. To add the strap, thread the ends through the rectangular rings on the strap loops. Fold under the raw edge on each end of the strap and stitch it back on itself 2" up from the ring. Stitch across the strap several times for extra strength with a double row of stitching.
21. Enjoy using your bag!



2150/Q Floral Montage



2155/Q Blossom



2152/B Koi



2155/B Blossom



2152/Q Koi



2150/B Floral Montage



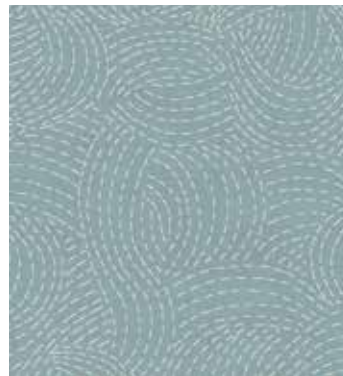
2151/B Hexagons



2151/Q Hexagons



2153/Q Scene



2156/B3 Sashiko



2154/B Chrysanthemum



2156/B7 Sashiko



2154/Q Chrysanthemum



2153/B Scene