

The Very Hungry Caterpillar Christmas

FABRICS © ERIC CARLE LLC



Inching To Christmas Quilt
Design: Jean Ann Wright

Quilt Size: 56" x 58"

andoverfabrics.com



andover

makower uk
The Henley Studio

Free Pattern Download Available

1384 Broadway New York, NY 10018
Tel. (800) 223-5678 • andoverfabrics.com

Inching To Christmas Quilt



Andover Fabrics new collection:

THE VERY HUNGRY CATERPILLAR – CHRISTMAS © Eric Carle LLC

Quilt designed by Jean Ann Wright

Quilt finishes 56" x 58"

The very hungry caterpillar inches closer and closer to Christmas as he goes up one snowflake and down another, then across Santa's mitten. Santa is patiently waiting for the fuzzy little creature to finish his slow journey and land under the tree where a very special gift is waiting to be opened.

Cutting Directions

Note: Read assembly directions before cutting patches. All measurements are cut sizes and include ¼" seam allowances. A fat ¼ is an 18" x 21" cut. Borders are cut the exact lengths required plus ¼" seam allowances. WOF designates the width of fabric from selvedge to selvedge (approximately 42" wide).

Fabric A

Fussy-cut (1) panel 20½" x 20½" from Santa print
Fussy-cut (1) panel 20½" x 20½" from tree

Fabric B

Cut top/bottom (2) borders 5½" x 56½", cut lengthwise
Cut side (2) borders 5½" x 48½", cut lengthwise

Fabric C

Cut (4) circles with 8" diameter

Fabric D

Cut (4) rectangles 5½" x 24½"

Fabric E

Cut (2) rectangles 8½" x 24½"

Fabric F

Cut (6) strips 2½" x WOF for binding
Cut (4) strips 2½" x 24½"

Fabric G

Cut top/bottom (2) borders 2½" x 24½", cut crosswise
Cut side (2) borders 2½" x 20½", cut crosswise

Fabric H

Cut top/bottom (2) borders 2½" x 24½", cut crosswise
Cut side (2) borders 2½" x 20½", cut crosswise

Backing

Cut (2) panels 33" x 64", pieced to fit quilt top with overlap on all sides

Fabric Requirements

		Yardage	Fabric
Fabric A	setting	1 panel (2/3 yard)	7510-X
Fabric B	outer border	1¾ yards	7512-X
Fabric C	appliqué	fat ¼ yard	7513-X
Fabric D	setting	¾ yard	7514-X
Fabric E	setting	¾ yard	7515-X
*Fabric F	setting	¾ yard	3476-B
Fabric G	border	¼ yard	3476-G
Fabric H	border	¼ yard	3476-R
Backing		3¾ yards	7511-X

* includes binding

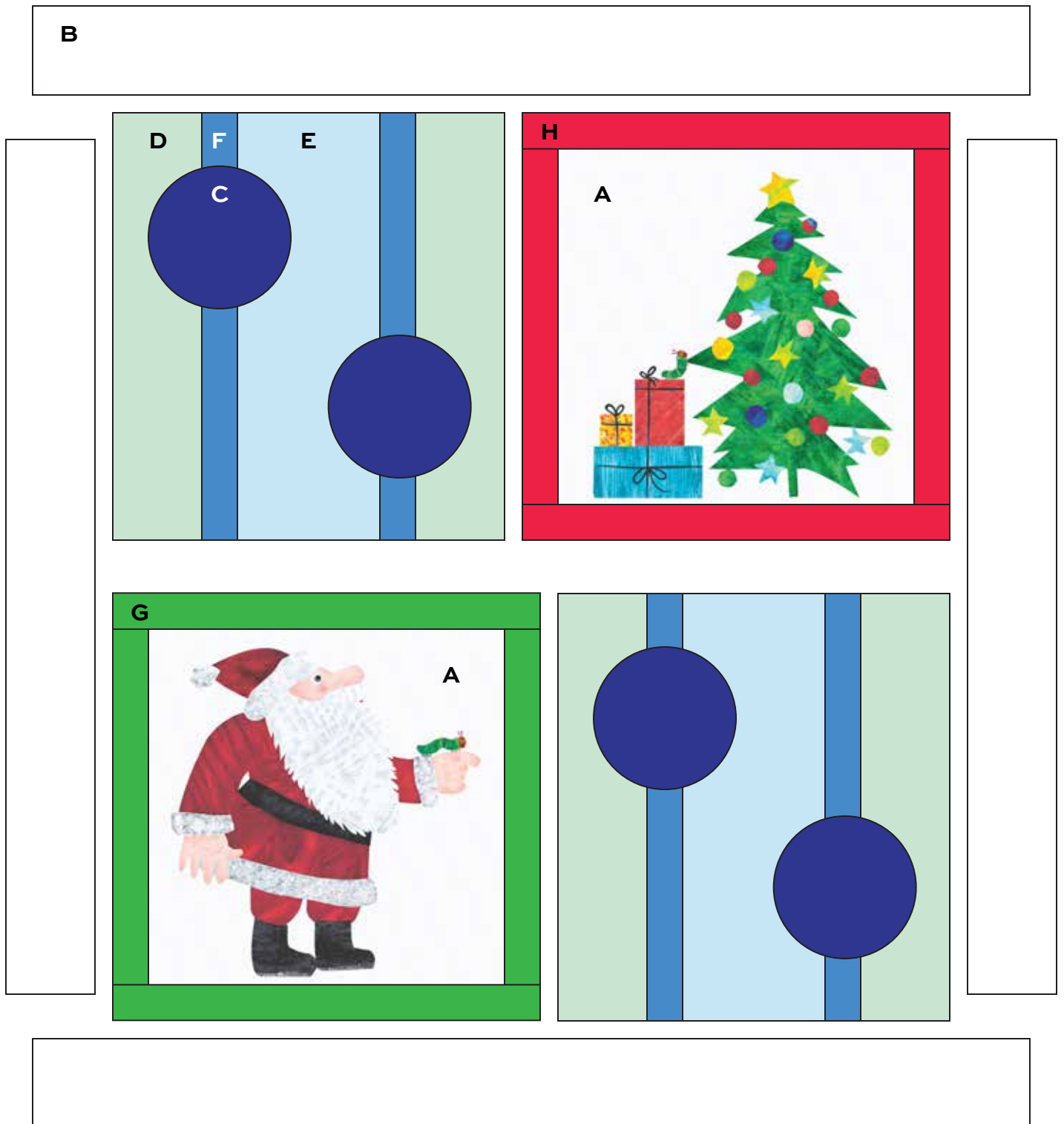
Making and Assembling the Quilt

1. Referring to the Quilt Diagram, sew Fabric G borders to the Santa square, sides on first. Press borders away from the Santa. Sew Fabric H borders to the tree square.
2. Sew 2 Fabric D rectangles, 2 Fabric F strips, and 1 Fabric E rectangle in the order shown to make the top left unit. Repeat to make the bottom right unit.
3. Draw the 8" diameter circles onto the paper side of paper-backed fusible web. Following manufacturer's instructions, fuse traced patterns to the wrong side of Fabric C. Cut out the circles. Position the circles on the Fabric F strips, referring to the quilt diagram for placement. Fuse each circle to the quilt, following manufacturer's instructions. Finish the edges with a decorative machine stitch using contrasting thread, or use an invisible thread with a blind appliqué machine stitch.
4. Sew the appliquéd squares and the Santa and Tree squares as shown to make 2 rows. Join the rows.
5. Sew Fabric B borders to the quilt, turning the print as shown, sides on first.

Finishing the Quilt

6. Layer the quilt with batting and backing and baste. Quilt in the ditch around borders and patches. Quilt around the printed motifs and appliqué. Bind to finish the quilt.

Inching to Christmas Quilt



Quilt Diagram

The Very Hungry Caterpillar – Christmas

FABRICS © ERIC CARLE LLC



7510-X*



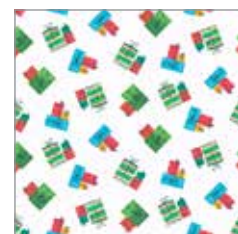
7512-X*



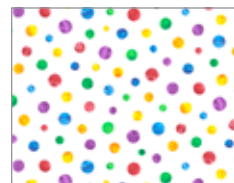
7513-X*



7514-X*



7515-X*



7236-X



3474-M



7511-X*



3476-B*



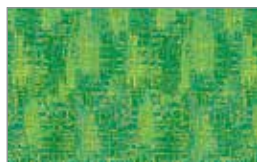
3476-G*



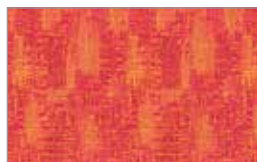
3476-R*



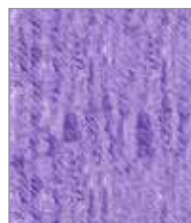
3477-B



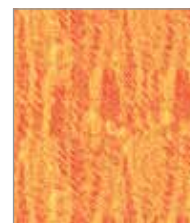
3477-G



3477-R



3476-P



3476-Y



A-T-White Lies

*Indicates fabrics used in quilt pattern. Fabrics shown are 10% of actual size.

andover

makower uk
The Henley Studio

Free Pattern Download Available

1384 Broadway New York, NY 10018
Tel. (800) 223-5678 • andoverfabrics.com