

# Handcrafted

BY ALISON GLASS



Cobblestone II Quilt Design: **Alison Glass**

Quilt Size: **60" x 70"**

[andoverfabrics.com](http://andoverfabrics.com)



## About Handcrafted

Created entirely by hand, Handcrafted is a new interpretation of the ancient wax resist fabric dyeing art form. It is also a celebration of the coming together of cultures. Artisans in Indonesia have perfectly interpreted Alison's vision for a new application of the hand stamped, hand dyed fabric process.

andover



makower uk  
*The Henley Studio*

Free Pattern Download Available

1384 Broadway New York, NY 10018  
Tel. (800) 223-5678 • [andoverfabrics.com](http://andoverfabrics.com)

# Cobblestone II Quilt



Introducing Andover Fabrics new collection: **HANDCRAFTED** by Alison Glass

Quilt designed by Alison Glass

Quilt finishes 60" x 70"

*The bright and bold prints in this collection have a hand-dyed feel to them, and the oversized quilting stitches add to the look of "handmade." The unusual method of constructing the columns makes this strippy quilt a delight to make.*

## Cutting Directions

**Note:** Read assembly directions before cutting patches. All measurements are cut sizes and include 1/4" seam allowances. WOF designates the width of fabric from selvedge to selvedge (approximately 42" wide).

**Fabric A** Cut (8) strips 2 1/2" x WOF for binding

**17 Prints** **From each:**

Cut (3) rectangles 10 1/2" x 11 1/2"  
(a total of 51 rectangles)

**Backing** Cut 2 panels approx. 34" x 78" pieced to fit quilt top with overlap on all sides

## Making the Quilt

1. These directions are for making the quilt as shown, with fabrics in columns 1, 3, and 5 in the same order, and fabrics in columns 2, 4, and 6 in the same order. If you prefer a more random look, arrange the rectangles in any order you wish.

On a large flat surface or design wall, arrange one rectangle of each of the 17 fabrics to make vertical column #1. Pick up the first pair of rectangles from the top of the column. Place both rectangles with right sides facing up on a cutting surface, one on top of the other as shown in Diagram 1. Place a long acrylic ruler on top of the rectangles, and slice across them at an angle. The angle doesn't matter, since you will be slicing through pairs at different angles to obtain the randomness that is the charm of this quilt. The cut results in patches from both fabrics that fit together like a puzzle.

2. Stitch the top patch of one fabric to the bottom patch of the second fabric (Diagram 2), joining them along the angled edges. Hint: Offset the patches so the line of stitching begins right where the fabrics crisscross as shown. Repeat with the remaining 2 patches. You now have 2 pieced "blocks." Replace one block in place on the design wall at the top of column 1. Set the second block in a pile for column 3.

## Fabric Requirements

| Fabric A         | binding | Yardage       | Fabric  |         |
|------------------|---------|---------------|---------|---------|
|                  |         | 5/8 yard      | 7391-G  |         |
| <b>17 Prints</b> | setting | 3/8 yard each |         |         |
| 7391-B           | 7391-P  | 7391-T        | *7394-G | 7394-P  |
| 7394-Y           | 7395-C  | 7395-P        | 7397-C  | 7397-R  |
| 7397-T           | 7397-V  | 7398-E        | 7398-G  | 7398-G1 |
| 7398-N           | 7398-T  |               |         |         |
| <b>*Backing</b>  |         | 5 yards       |         | 7394-G  |

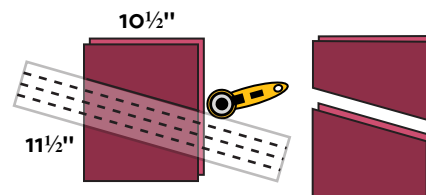


Diagram 1

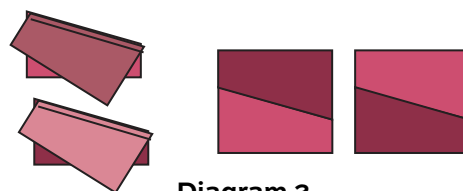


Diagram 2

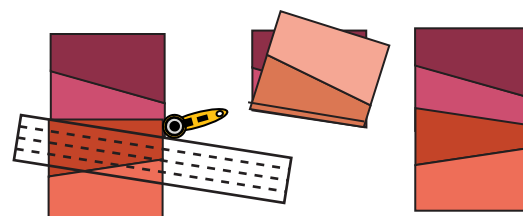


Diagram 3



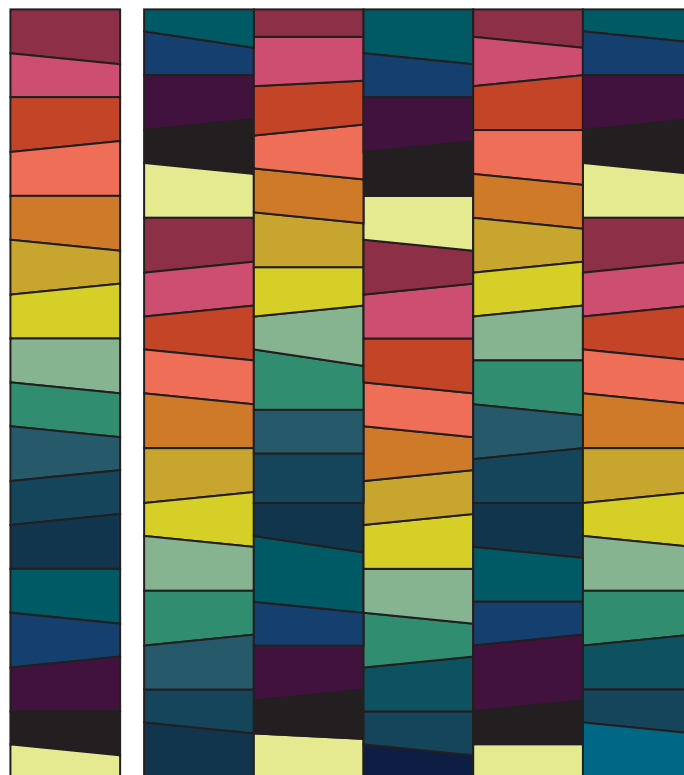
Diagram 4

# Cobblestone II Quilt

- Pick up the next 2 rectangles in column 1 and repeat Steps 1 and 2 to make 2 more blocks. Be sure to change the angle of the ruler. Replace one pieced block in column 1, and set the second block in the pile for column 3. Continue cutting and stitching pairs of rectangles, always placing one stitched block back on the design wall in the correct order and placing the second block in the column 3 pile. For half of the pairs, tip the ruler higher on the left side of the rectangles. For half of the pairs, tip the ruler higher on the right side. You will add rectangle 17 to the bottom in the next step.
- To continue the angled look between blocks, follow this technique. Place the first block on the cutting mat, right side facing up. Overlap the second block right side facing up along the bottom of the first block. Overlap the two blocks 1" to 2" (Diagram 3). Angle the ruler across the overlap and cut the 2 blocks as shown. Note there will be a little portion of each block trimmed off. Stitch the blocks together along their angled edges. Continue in this manner until all 8 blocks have been joined in column 1 (Diagram 4).
- Cut 2 of the yellow with red cross rectangles (at the bottom of column 1) in half to make 4 rectangles  $5\frac{3}{4}$ " x  $10\frac{1}{2}$ ". Add one of these rectangles to the bottom of column 1 using the technique in Diagrams 3 and 4. If the column's sides are not perfectly straight, trim the sides even.
- Repeat Steps 1-5 to stitch column 3, using the pile of blocks you set aside and adding the yellow rectangle to the bottom. Trim the sides as needed.
- Stitch column 5 as you did column 1, making a pile of the duplicate blocks. You will use these set-aside blocks in column 2.
- Arrange the pieced blocks (from Step 7) in the correct order to make column 2. Note that a yellow rectangle cut in Step 5 is inserted in between blocks near the top of the column. Follow Step 4 to join the blocks and the yellow rectangle in order.
- Arrange 17 rectangles in order for column 4. Starting at the top, stitch pairs into blocks, noting that the bottom rectangle will be stitched on later. The second block of each pair is used in column 6. Follow the steps to cut and join all blocks to make columns 4 and 6. Cut the navy with blue cross rectangle in half as in Step 5, and stitch to the bottom of columns 4 and 6.
- Align each column with its neighbor along the top edge and pin. If a column is much shorter than the others, sew another fabric strip to it. Don't worry if the columns match at the bottom—they probably won't. Stitch columns together side by side, aligning all across the top. Trim the bottom of the quilt even with the bottom of the shortest column.

## Finishing the Quilt

- Layer the quilt with batting and backing and baste. Quilt in the ditch around the block patches. If you wish to make the over-sized, decorative quilting stitches shown in the illustration, use a heavier thread such as No. 8 perle (pearl) cotton in a bright contrasting color. We suggest that you hand quilt  $\frac{1}{2}$ " away from edges of the columns. Hint: Place lengths of  $\frac{1}{2}$ "-wide masking tape alongside each seam as a guide. To keep the stitches even length, use Tiger Tape, an adhesive tape available at quilt shops that has evenly spaced lines to use as guides. Make your stitches about  $\frac{1}{4}$ " long and spaced  $\frac{1}{4}$ " apart. Bind to finish the quilt.



Quilt Diagram

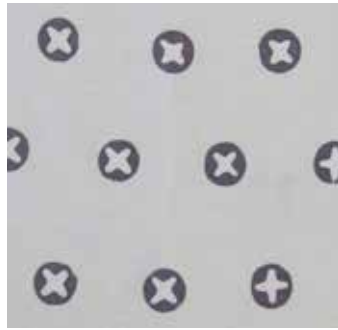


# Handcrafted

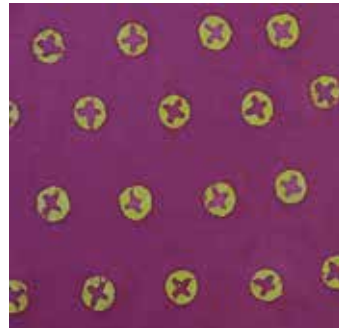
BY ALISON GLASS



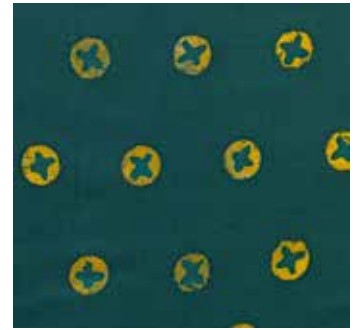
7391-B



7391-G



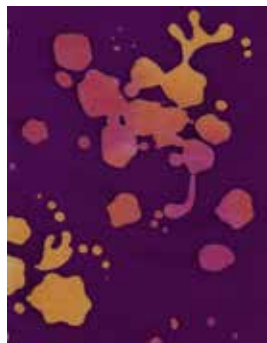
7391-P



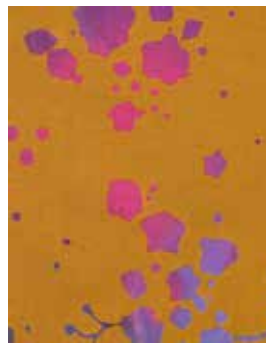
7391-T



7394-G



7394-P



7394-Y



7395-C



7395-P



7397-C



7397-R



7397-T



7397-V



7398-E



7398-G



7398-G1



7398-N



7398-T

All fabrics are used in quilt pattern. Fabrics shown are 20% of actual size.

andover



makower uk  
*The Henley Studio*

Free Pattern Download Available

1384 Broadway New York, NY 10018  
Tel. (800) 223-5678 • andoverfabrics.com