

# GOOD SEASONS - Spring

*Fabrics by Carol Eldridge*



Quilt designed by Jean Ann Wright  
Finished size: 44" x 50½"



**makower uk**®

1384 Broadway  
New York, NY 10018  
(800) 223-5678  
[www.andoverfabrics.com](http://www.andoverfabrics.com)

# Good Seasons Spring Quilt

Introducing Andover Fabrics new collection: Good Seasons Spring by Carol Eldridge

Quilt designed by Jean Ann Wright

Quilt finishes 44" x 50½"

8 Pieced Blocks: 6" x 6"

*Spring in the country is the theme of this charming wall quilt. Let the novelty prints do most of the work. You only need to make eight blocks with quick flip-and-stitch piecing. You may want to make all four seasonal quilts for an ever-changing display in your home. All the quilts are made with the same easy construction.*

## Cutting Directions

**Note:** Borders are cut the exact lengths required plus ¼" seam allowances. WOF designates the width of fabric from selvedge to selvedge (approximately 42" wide).

**Fabric A** Fussy-cut ¼" away from the edge of the large printed center square on each side  
Fussy-cut ¼" away from the stripe border around each of the (4) small squares.

**Fabric B** Cut (2) borders 9¾" x 26"

**Fabric C** Cut (2) borders 2½" x 40½"  
Cut (2) borders 2½" x 32½"  
Cut (5) 2½" x WOF strips for binding  
Cut (8) squares 6½" x 6½"

**Fabric D** Cut (2) borders 1½" x 24½"  
Cut (2) borders 1½" x 22½"

**Fabric E** Cut (2) borders 2½" x 36½"  
Cut (2) borders 2½" x 28½"

**Fabric F** Cut (32) squares 3½" x 3½"

**Fabric G** Cut (2) 2½" x wof strips, recut into (32) squares 2½" x 2½"  
Cut (3) 2" x wof strips, recut into (2) 2" x 20½" pieces and (2) 2" x 22½" pieces  
Cut (4) 1¼" x wof strips, from each strip cut into (2) 1¼" x 8½" and (2) 1¼" x 10" pieces

\*Additional fabric required for backing.

**Backing** Cut (2) panels 30" x 52", pieced to fit quilt top with 4" overlap

## Fabric Requirements

		Yardage	
<b>Fabric A</b>	quilt center	1 panel	5640-M
<b>Fabric B</b>	wide border	¾ yard	5641-M
<b>Fabric C</b>	border, binding	1⅛ yards	5642-M
<b>Fabric D*</b>	inner border	¼ yard	5263-G1
<b>Fabric E</b>	middle border	¾ yard	1867-T15
<b>Fabric F</b>	blocks	¾ yard	1867-R8
<b>Fabric G</b>	blocks, borders	½ yard	1867-G30
<b>Fabric D</b>	backing	3 yards	5263-G1

\*includes binding

## Making Pieced Blocks

1. The 8 blocks are made with a flip-and-stitch method so all patches can be cut on the straight-grain of fabric. Cut 8 squares 6½" x 6½" from Fabric C. Draw a diagonal line on the wrong side of each Fabric F 3½" square. Place a marked square on a Fabric C square, right sides together, aligning raw edges at one corner. Stitch on the drawn line; trim away ONLY the excess Fabric F corner (Diagram 2). Press open. In the same manner, sew and trim a red square to each corner of the Fabric C square (Diagram 3).
2. Draw a diagonal line on the wrong side of each Fabric G 2½" square. Align a Fabric G square in a corner of the 6½" unit and on top of the red triangle (Diagram 4). Stitch on the drawn line (Diagram 4). Press the green fabric up to align with the Fabric C square underneath. Trim all excess fabric from the corner (Diagram 5). Repeat on each corner to complete the block. Make 8 blocks.

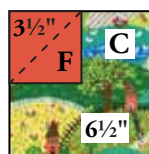


Diagram 1



Diagram 2



Diagram 3



Diagram 4



Diagram 5



Block

Make 8

# Good Seasons Spring Quilt

## Assembling the Quilt

3. Refer to the Quilt Diagram. Sew the Fabric G  $2" \times 20\frac{1}{2}"$  borders to the top/bottom and the Fabric G  $2" \times 22\frac{1}{2}"$  the sides of the Fabric A printed panel. Center the panel and trim the bordered center square to  $22\frac{1}{2}" \times 22\frac{1}{2}"$ . Sew the fabric D  $1\frac{1}{2}" \times 22\frac{1}{2}"$  borders to the sides and the Fabric D  $1\frac{1}{2}" \times 24\frac{1}{2}"$  borders to the top/bottom of the quilt center.
4. Join 4 pieced blocks in a vertical row as shown, keeping the novelty print in the centers upright. Sew to the side of the quilt center. Repeat on the other side.

5. Add Fabric E borders to the top and bottom of the quilt center; sew borders to the sides. Sew Fabric C borders to the quilt in the same order.
6. Sew a fabric I  $1\frac{1}{4}" \times 8\frac{1}{2}"$  border to opposite sides of each of the small fussy cut Fabric A panels. Sew a Fabric I  $1\frac{1}{4}" \times 10"$  to top/bottom of the same squares. Center printed panel and trim each bordered square to  $9\frac{3}{4}"$  square. Sew these squares to each end of the Fabric B borders. Sew borders to top/bottom of the quilt.

## Finishing the Quilt

7. Layer the quilt with batting and backing and baste. Quilt the layers together. Bind to finish the quilt.



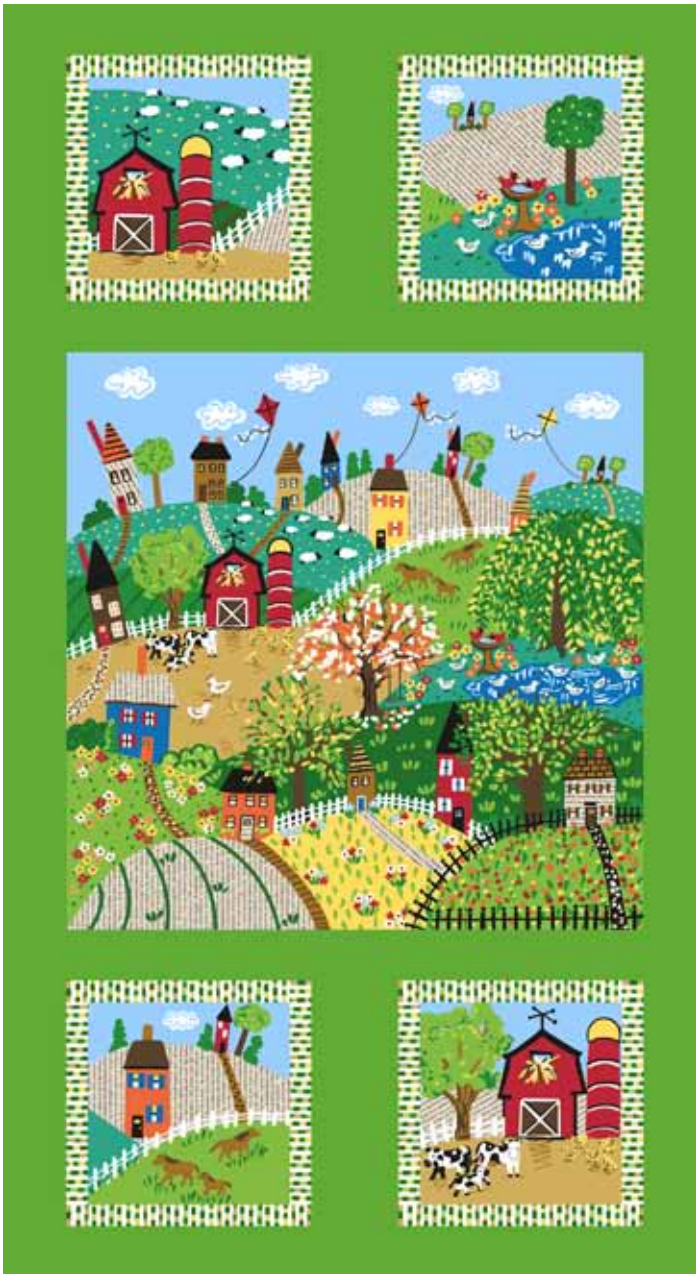
Quilt Diagram

# Good Seasons – Spring

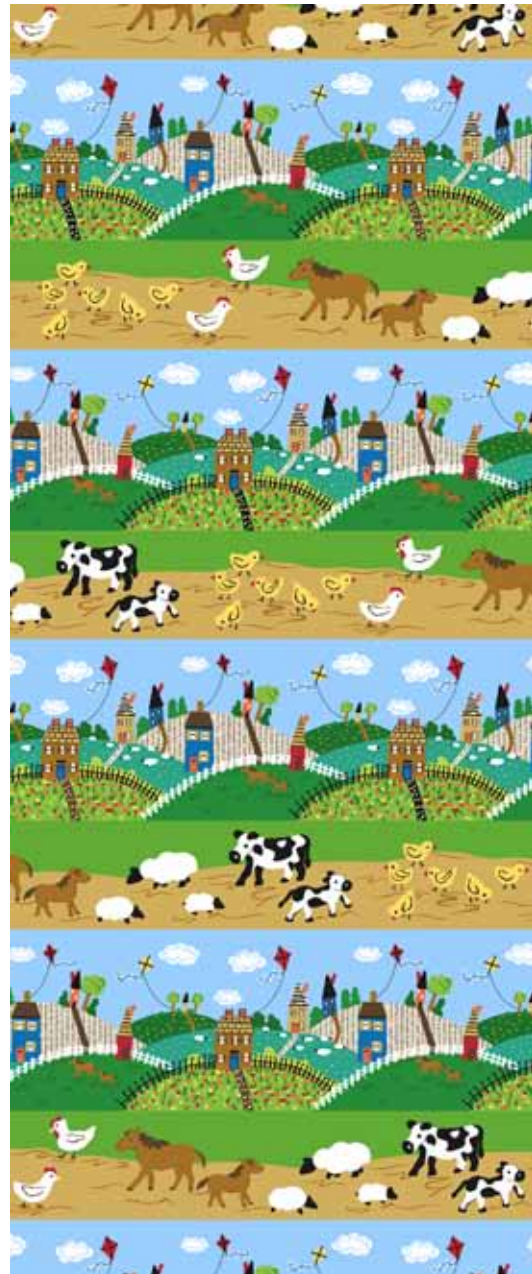
© Carol Eldridge



makower uk®



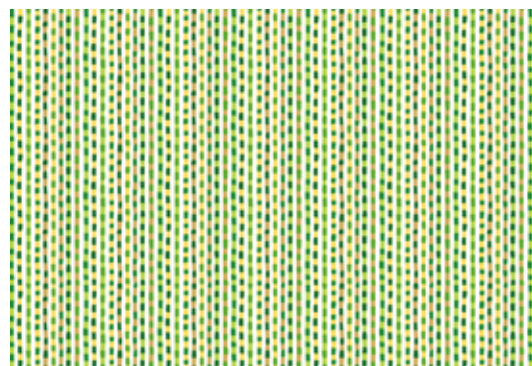
5640-M



5641-M



5642-M



5263-G1



1867-G30



1867-T15



1867-R8