

# Giggleswick Mill

BY DI FORD-HALL



Country Home Quilt  
designed by: **Janet Houts**

Quilt Size: **65" x 65"**

[andoverfabrics.com](http://andoverfabrics.com)



## About Giggleswick Mill

My love of Old English Frame Quilts inspired this fabric line. The large floral print borders, typical in antique English quilts, give a soft look to the edges, ensuring your quilt will look like it was made 150 years ago. — *Di Ford-Hall*

andover



makower uk  
*The Henley Studio*

Free Pattern Download Available

1384 Broadway New York, NY 10018  
Tel. (800) 223-5678 • [andoverfabrics.com](http://andoverfabrics.com)

# Country Home Quilt



Introducing Andover Fabrics new collection: GIGGLESWICK MILL by Di Ford-Hall

Quilt designed by Janet Houts

Quilt finishes 65" x 65"

*This lovely medallion-style quilt pays honor to our quilting past with traditional fabrics and time-honored blocks. The fussy-cut border and Log Cabin blocks make a stunning frame for the interior patchwork.*

## Cutting Directions

**Note:** Read assembly directions before cutting patches. All measurements are cut sizes and include 1/4" seam allowances. Some borders are cut the exact lengths required plus 1/4" seam allowances. The mitered borders (Fabric B and Fabric K) include extra length for insurance. WOF designates the width of fabric from selvedge to selvedge (approximately 42" wide).

**Fabric A** Cut (4) borders 4 1/2" x 57 1/2", cut lengthwise  
Cut (1) square 6 1/2"

**Fabric B** Fussy-cut (4) borders 5 1/2" x 60", cut lengthwise

**Fabric C** Cut (2) squares 6 7/8" x 6 7/8", cut in half diagonally to make 4 half-square triangles  
Cut (36) squares 3 1/2"  
Cut (20) squares 2"

**Fabric D** Cut (1) square 7 1/4" x 7 1/4", cut in half diagonally twice to make 4 quarter-square triangles  
Cut (12) rectangles 3 1/2" x 6 1/2"  
Cut (4) squares 4 1/2"

**Fabric E** Cut (20) rectangles 1 1/2" x 7"  
Cut (20) rectangles 1 1/2" x 6"  
Cut (20) rectangles 1 1/2" x 5"  
Cut (20) rectangles 1 1/2" x 4"  
Cut (20) rectangles 1 1/2" x 3"  
Cut (20) rectangles 1 1/2" x 2"

## Fabric Requirements

		Yardage	Fabric
<b>Fabric A</b>	border	1 3/4 yards	8217-R
<b>Fabric B</b>	border	1 3/4 yards	8218-TL
<b>Fabric C</b>	blocks	3/4 yard	8219-RL
<b>Fabric D</b>	blocks	1/2 yard	8220-R
<b>Fabric E</b>	blocks	3/4 yard	8221-R
<b>*Fabric F</b>	blocks	1 1/4 yards	8221-T
<b>Fabric G</b>	blocks	1/2 yard	8222-R
<b>Fabric H</b>	blocks	3/4 yard	8223-R
<b>Fabric I</b>	border	1/4 yard	8223-T
<b>Fabric J</b>	blocks	1/4 yard	8224-E
<b>Fabric K</b>	border	1/4 yard	8224-T
<b>Backing</b>		4 1/4 yards	8224-N

\*includes binding

**Fabric F** Cut (7) strips 2 1/2" x WOF for binding  
Cut (4) squares 3 1/2"  
Cut (144) squares 2"

**Fabric G** Cut (20) rectangles 1 1/2" x 8"  
Cut (20) rectangles 1 1/2" x 7"

**Fabric H** Cut (28) squares 3 1/2"  
Cut (20) rectangles 1 1/2" x 6"  
Cut (20) rectangles 1 1/2" x 5"

**Fabric I** Cut (4) borders 3 1/2" x 12 1/2",  
cut crosswise

**Fabric J** Cut (20) rectangles 1 1/2" x 4"  
Cut (20) rectangles 1 1/2" x 3"

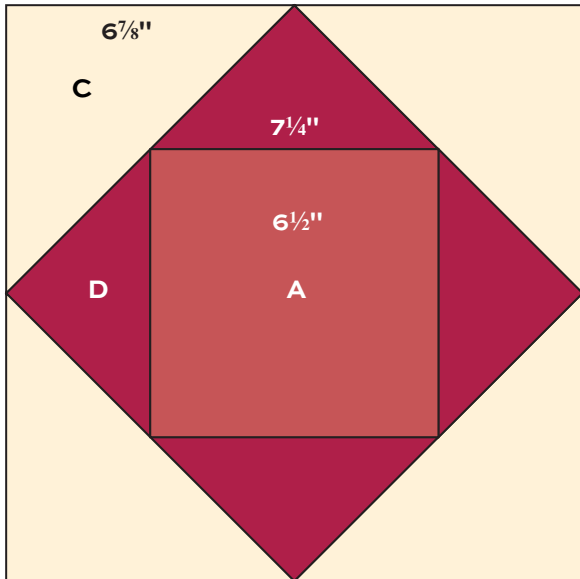
**Fabric K** Cut (4) borders 1 1/2" x 50",  
cut crosswise and pieced

**Backing** Cut (3) panels 37" x 73", pieced to fit quilt top with overlap on all sides

# Country Home Quilt

## Making the Quilt

1. Referring to the Center Block diagram, center and sew Fabric D quarter-square triangles to sides of a Fabric A  $6\frac{1}{2}$ " square. Sew Fabric C half-square triangles to sides. The block should measure  $12\frac{1}{2}$ " from raw edge to raw edge. If it does not, adjust your stitching and pressing.



Center Block – Make 1

2. Referring to the Quilt Diagram, sew Fabric I borders to the sides of the center block. Sew Fabric F  $3\frac{1}{2}$ " squares to ends of remaining Fabric I borders. Sew to the top and bottom.
3. Draw a diagonal line on the wrong side of 24 Fabric H  $3\frac{1}{2}$ " squares. Place a marked square on one end of a Fabric D  $3\frac{1}{2}$ " x  $6\frac{1}{2}$ " rectangle, right sides together. Sew on the marked line; trim away and discard excess fabric (Diagram 1). Press open. Repeat this process on the opposite end of the rectangle to make a Flying Geese unit (Diagram 2). Make 12 total.

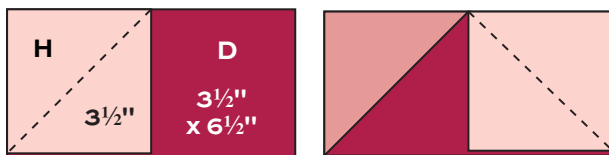
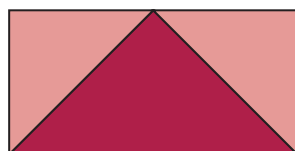


Diagram 1

Diagram 2



Flying Geese – Make 12

4. Referring to the Quilt Diagram, join 3 Flying Geese units end to end. Make 4 borders like this. Sew to the sides of the quilt. Sew Fabric H  $3\frac{1}{2}$ " squares to ends of the remaining Flying Geese borders. Sew to the top and bottom.
5. Referring to Diagram 3, draw a diagonal line on the wrong side of each Fabric F  $2$ " square. Place a marked square on a Fabric C  $3\frac{1}{2}$ " square, right sides together, aligning raw edges at one corner. Stitch on the drawn line; trim away and discard excess fabric. Press open. Repeat on the opposite corner, watching the orientation of the sewing line. Repeat on remaining corners, watching the orientation of the sewing lines (Diagram 4). Make 36 Square-in-a-Square blocks.

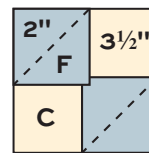


Diagram 3

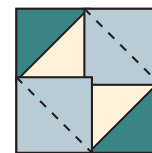
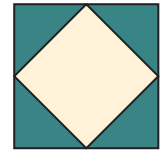
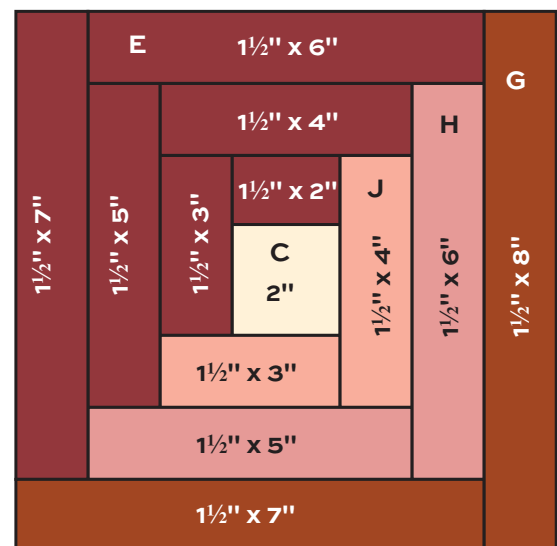


Diagram 4



Square-in-a-Square Block – Make 36

6. Join 8 Square-in-a-Square blocks side by side to make a border. Make 2. Sew to the sides of the quilt. Join 10 blocks to make a border. Sew to the top. Repeat for the bottom.
7. Referring to the Log Cabin Block diagram, sew the appropriate strips in counterclockwise order to the center Fabric C square. The block should measure  $8$ " x  $8$ " from raw edge to raw edge. Make 20 blocks.



Log Cabin Block – Make 20

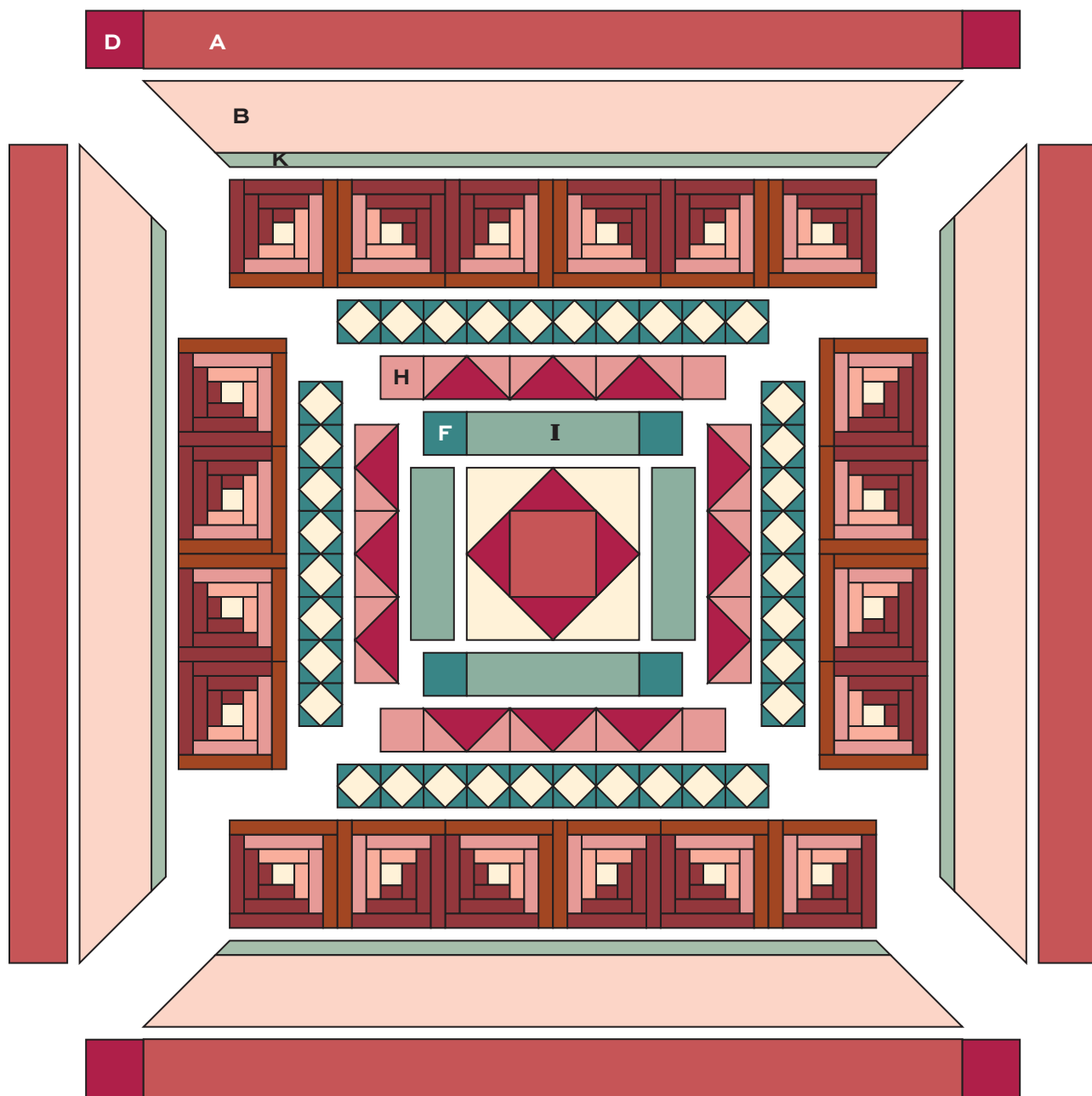
# Country Home Quilt

- Join 4 Log Cabin blocks to make a border, rotating the blocks as shown in the Quilt Diagram. Make 2 borders. Sew to the sides. Join 6 blocks to make the top border. Sew to the top. Repeat for the bottom.
- Fussy-cut the 4 Fabric B borders lengthwise from the same part of the print. Matching centers, sew a Fabric K border to a Fabric B border. Make 4 border units. Sew the border units to the quilt, starting and stopping stitching  $\frac{1}{4}$ " from the quilt's raw edge. Miter the corners and trim the excess.

- Sew Fabric A borders to opposite sides of the quilt. Sew Fabric D  $4\frac{1}{2}$ " squares to ends of remaining borders. Sew to the top and bottom.

## Finishing the Quilt

- Layer the quilt with batting and backing and baste. Quilt in the ditch around borders and block patches. Quilt around the printed motifs in the borders. Bind to finish the quilt.



Quilt Diagram

# Giggleswick Mill

BY DI FORD-HALL



8217-N



8217-R\*



8217-T



8218-N



8218-R\*



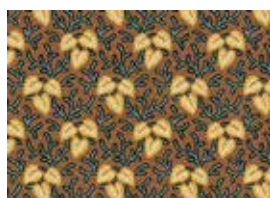
8218-TL



8220-G



8221-N



8222-N



8219-RL\*



8219-LN



8220-N



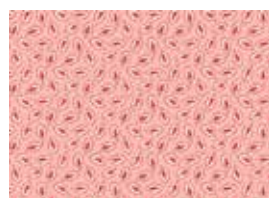
8221-R\*



8222-O



8223-E



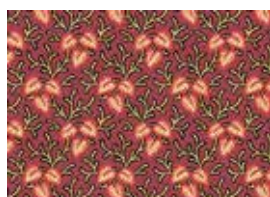
8224-E\*



8220-R\*



8221-T\*



8222-R\*



8223-R\*



8224-N\*



8220-T



8221-Y



8222-T



8223-T\*



8224-T\*

All fabrics are used in quilt pattern. Fabrics shown are 25 % of actual size.

andover

• makower uk  
• The Henley Studio

Free Pattern Download Available

1384 Broadway New York, NY 10018  
Tel. (800) 223-5678 • andoverfabrics.com