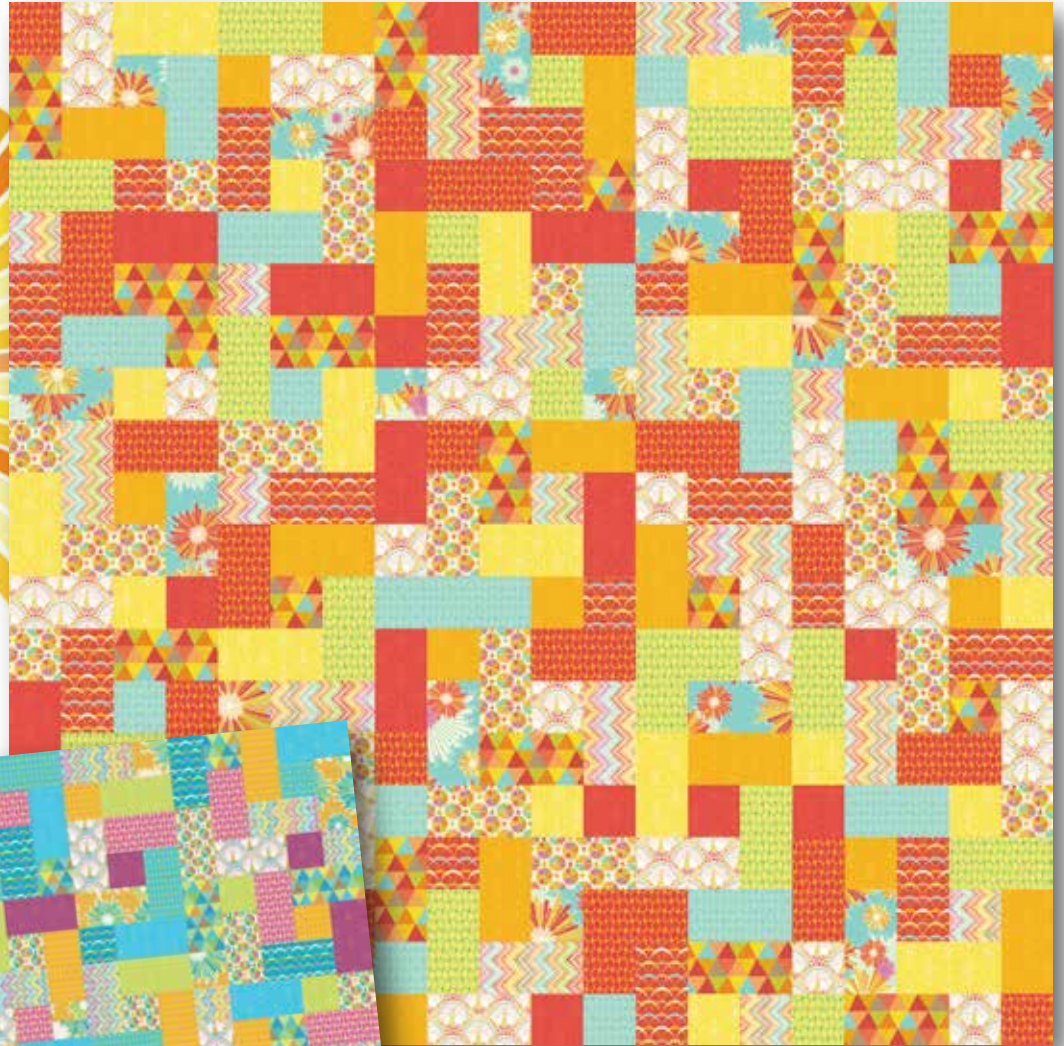




PRESENTS

Fabrics by
Thomas Knauer

Frippery



Quilt designed by Thomas Knauer
Finished size: 80" x 80"



makower uk[®]

www.andoverfabrics.com

Frippery Quilt

Introducing Andover Fabrics new collection: Frillery by Thomas Knauer
Quilt designed by Thomas Knauer

Quilt finishes 80" x 80"
15 Block Y: 16" x 16"
10 Block Z: 16" x 16"

Where's the block? Actually, where are the two blocks? The scrappy, multiple-patch blocks fool the eye as they meld into one another. The rich, vibrant colors and fanciful prints create a delight for the eye. Easy piecing and large patches make quick work of this queen-size topper.

Fabric Requirements

| | Yardage | Yellow | Teal |
|--------------------------|----------|---------|---------|
| *Fabric A blocks | ¾ yard | 5813-Y | 5813-T |
| Fabric B blocks | ¾ yard | 5814-Y | 5814-T |
| Fabric C blocks, binding | 1½ yards | 5815-Y | 5815-T |
| Fabric D blocks | ¾ yard | 5816-Y | 5816-T |
| Fabric E blocks | ¾ yard | 5817-Y | 5817-T |
| Fabric F blocks | ¾ yard | 5818-Y | 5818-T |
| Fabric G blocks | ¾ yard | 5819-Y1 | 5819-T1 |
| Fabric H blocks | ¾ yard | 5819-Y2 | 5819-T2 |
| Fabric I blocks | ¾ yard | 5819-Y3 | 5819-T3 |
| Fabric J blocks | ¾ yard | 5820-Y1 | 5820-T3 |
| Fabric K blocks | ¾ yard | 5820-Y2 | 5820-T2 |
| Fabric L blocks | ¾ yard | 5820-Y3 | 5820-T1 |
| *Backing | 5 yards | 5813-Y | 5813-T |

Cutting Directions

Note: Read assembly directions before cutting patches. All measurements are cut sizes and include 1/4" seam allowances. WOF designates the width of fabric from selvedge to selvedge (approximately 44" wide).

Fabrics A, B, From each:

D-L Cut (approximately 11 or 12) rectangles 4½" x 8½"
Cut (approximately 10) squares 4½" x 4½"

Fabric C Cut (9) strips 2½" x WOF for binding
Cut (approximately 11 or 12) rectangles 4½" x 8½"
Cut (approximately 10) squares 4½" x 4½"

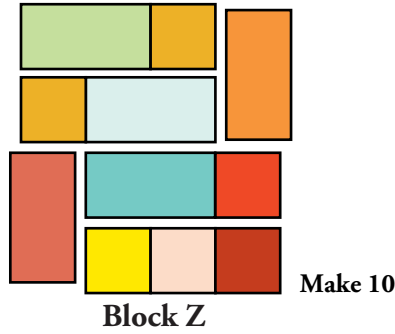
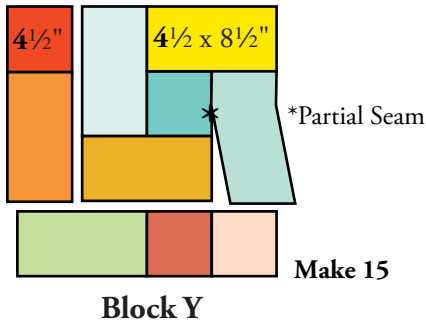
Backing Cut (2) panels 43" x 86", pieced to fit quilt top with overlap on all sides

Backing (E) Cut (2) panels 35" x 81", pieced to fit quilt top with overlap on all sides

Making and Assembling the Quilt

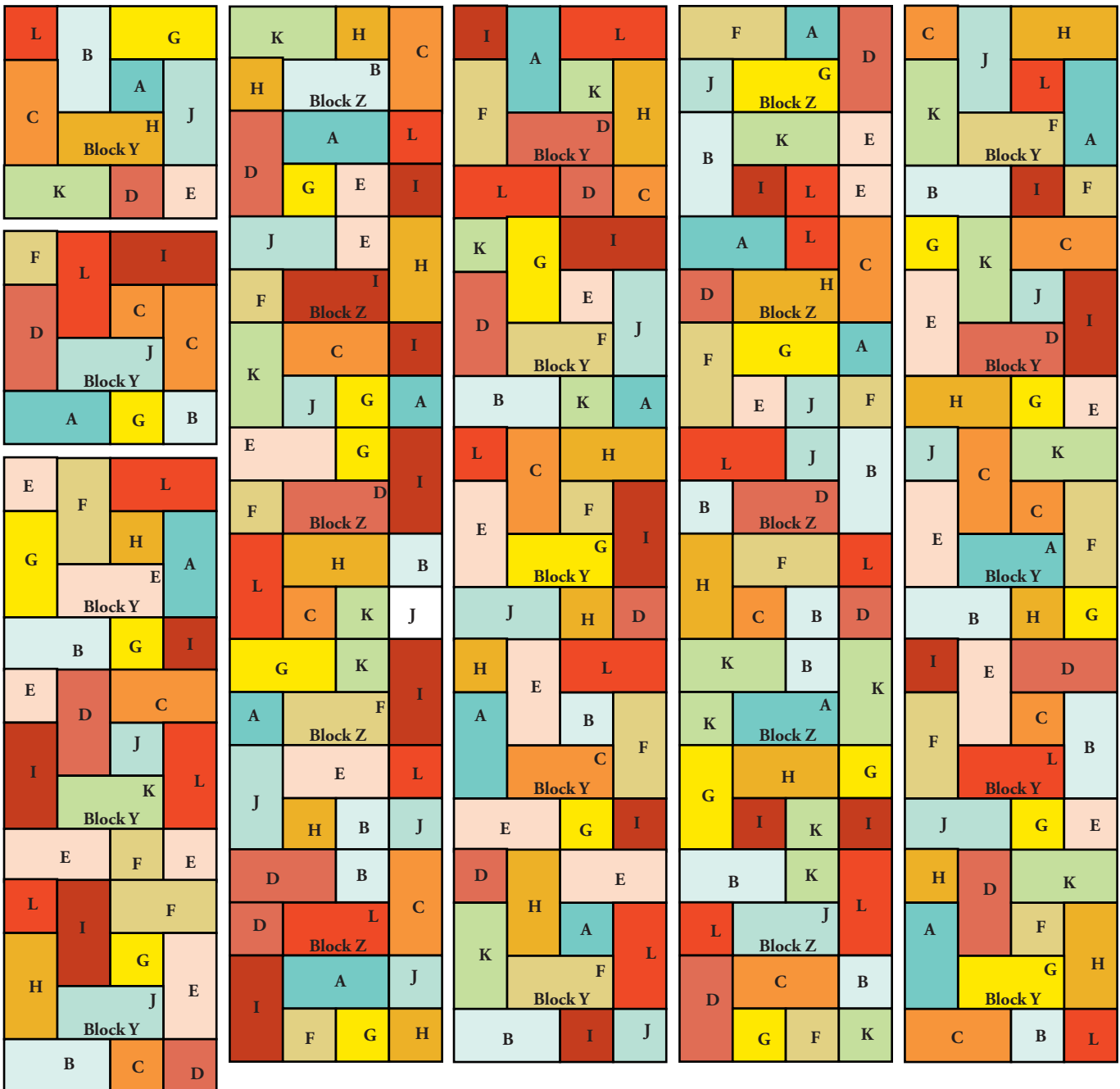
1. You need to cut a total of 140 rectangles and 120 squares. Yardage is sufficient to cut more patches than called for from a fabric if there are some fabrics that you want to use more. Each block has colors arranged differently from every other block. Feel free to improvise, or follow the Quilt Diagram to make the quilt exactly as shown. Hint: Cut patches for 1 block at a time, and sew the patches to complete the block. Place the finished block on a flat surface to keep it in the correct position. Check off each block on the Quilt Diagram as you finish it.
2. Referring to the Block Y diagram, sew a 4½" x 8½" rectangle halfway along the right side of a 4½" square, stopping stitching about 2" from the edge to make a partial seam. Add a second rectangle to the top of the square, aligning the left end of the rectangle with the square as shown. Sew a third rectangle to the left side, and a fourth to the bottom. Complete the partial seam with the first rectangle. Sew a rectangle and square to make the left strip. Sew to the block. Sew a rectangle and 2 squares to make the bottom strip. Sew to the bottom. Make 15 Block Y.
3. Referring to the Block Z diagram, join squares and rectangles into units. Sew the units into larger units, and then join the larger units to make the block. Make 10 Block Z.
4. Referring to the Quilt Diagram, arrange and join the blocks in 5 vertical columns with 5 blocks in each. Block Ys are in columns 1, 3, and 5. Block Zs are in columns 2 and 4. Note that blocks should be oriented in the same direction as shown in the block diagrams. Join the columns.

Frippery Quilt



Finishing the Quilt

5. Layer the quilt with batting and backing; baste. Quilt in the ditch around block patches. Bind to finish the quilt.



Quilt Diagram

Frippery

by Thomas Knauer



makower uk®

1384 Broadway
New York, NY 10018
(800) 223-5678
www.andoverfabrics.com



5813-T



5814-T



5817-T



5818-T



5819-T1



5820-T1



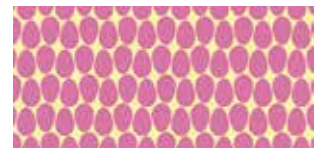
5815-T



5816-T



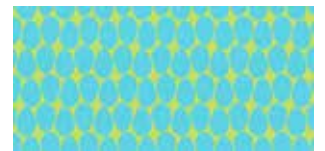
5819-T2



5820-T2



5819-T3



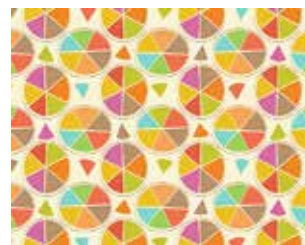
5820-T3



5813-Y



5814-Y



5817-Y



5818-Y



5819-Y1



5820-Y1



5815-Y



5816-Y



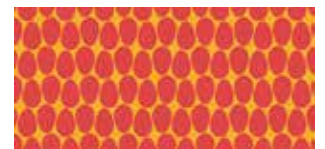
5819-Y2



5820-Y2



5819-Y3



5820-Y3