

# Forest Cushions

Finished size 20" x 20" (50 x 50cms)

Designed by Lynne Goldsworthy of [lilysquilts.blogspot.com](http://lilysquilts.blogspot.com)  
using the Forest collection from Makower UK [www.makoweruk.com](http://www.makoweruk.com)



Cushion A Green

**Fabric requirements for one cushion**



Cushion A Orange

Fabric	Cushion A Green	Cushion B Orange	Description	Amount	Cut
A	2168Q	2168G	Forest Scene	FQ	One 12" square
B	2000/W02	2000/W02	Snow White Spectrum	FQ	Eight 1 ¼" x 10" strips Eight 1 ¼" x 13" strips
C	2171G*	2171Q	Ditzy	FQ	Four 1 ¾" x 12" strips
D	2169Q	2169Q	Trees	FQ	Four 2 ½" x 15" strips
E	2174T	2174N	Doodle Ditzy		Four 1 ¾" x 12" strips
F	2168G~	2168Q~	Forest Scene	F8th	Two 8" squares cut in half on the diagonal (one top left to bottom right and one top right to bottom left)
Binding	2171G*	2171G	Ditzy	FQ	Four 2 ½" WOFQ strips
Backing	2168G~	2168Q~		¾ m/ yd	One 11" x 22" and one 15" x 22" rectangle (cut portrait style)

Templates; Five of each of templates A1/B1 and A2/B2

Wadding; 24" square / 60cm square 279 Cotton Mix 80-20 from <http://www.vlieseline.com/en>

Threads; Aurifil 50wt for piecing and 40wt for quilting from <http://www.aurifil.com>

\* also used in binding / ~ also used for backing

## Notes:

- Read the pattern in full before starting.
- $\frac{1}{4}$ " seams are used throughout except where stated otherwise.
- Press after each seam, pressing seams open or to one side as preferred.
- WOF - width of fabric - a strip of fabric cut from selvedge to selvedge or from the selvedge to the centre cut on a FQ or F8th (WOFQ).
- We do not add a backing to our pillow front but, if you prefer to add a fabric backing, you will need a 24" square of some scrap fabric.
- This pattern uses foundation paper piecing. If you are not familiar with this technique, we suggest practicing on scraps first and the following online tutorial is a useful guide:
- <http://www.lovepatchworkandquilting.com/blog/foundation-paper-piece>
- Make sure to visit <http://www.makoweruk.com/projects/> to ensure you are working from the most up-to-date version of the pattern.

## Making the cushion

1. Follow the fabric layout in the main image and fig 1 and cut the fabrics as shown in the fabric requirements table.
2. Tape together the five pairs of templates at the red line. Four A templates (black) will be used to paper piece the four sections of the cushion front. One B template (red) will be used to cut out the centre square for each cushion front.
3. Use the B (red) template as shown in figs 2 and 3 to trim the centre square to a diamond shape.
4. Foundation paper piece the four A templates using the fabrics as listed out in fig 1, trim to the dashed lines and remove the papers from the back.
5. Sew the four A template pieces to the centre B template piece using Y seams and taking care to ensure that the corner triangles are all the right way up.

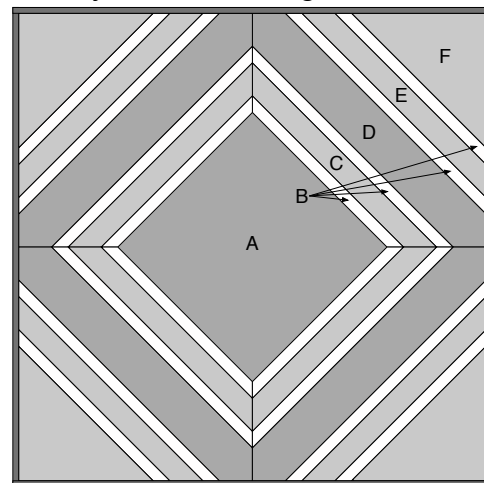


fig 1

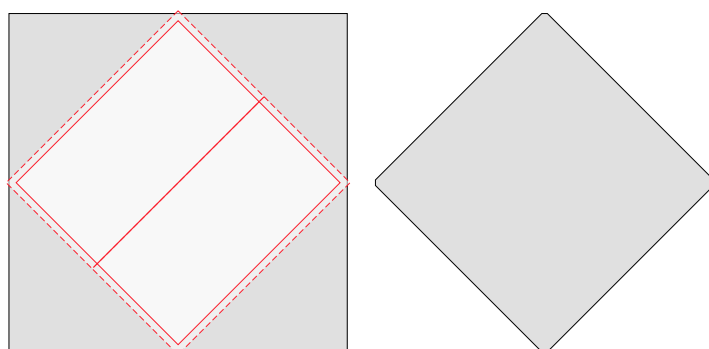
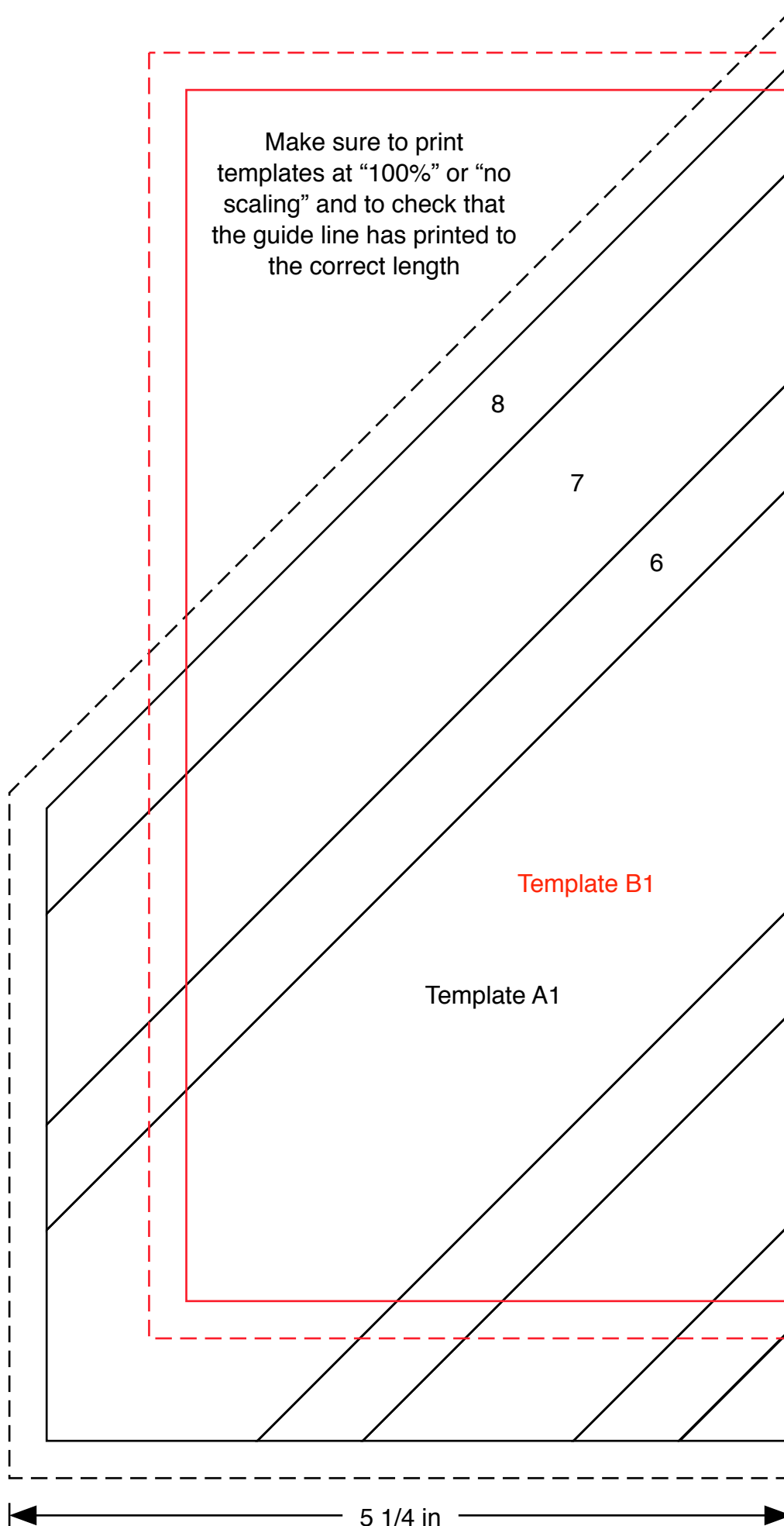
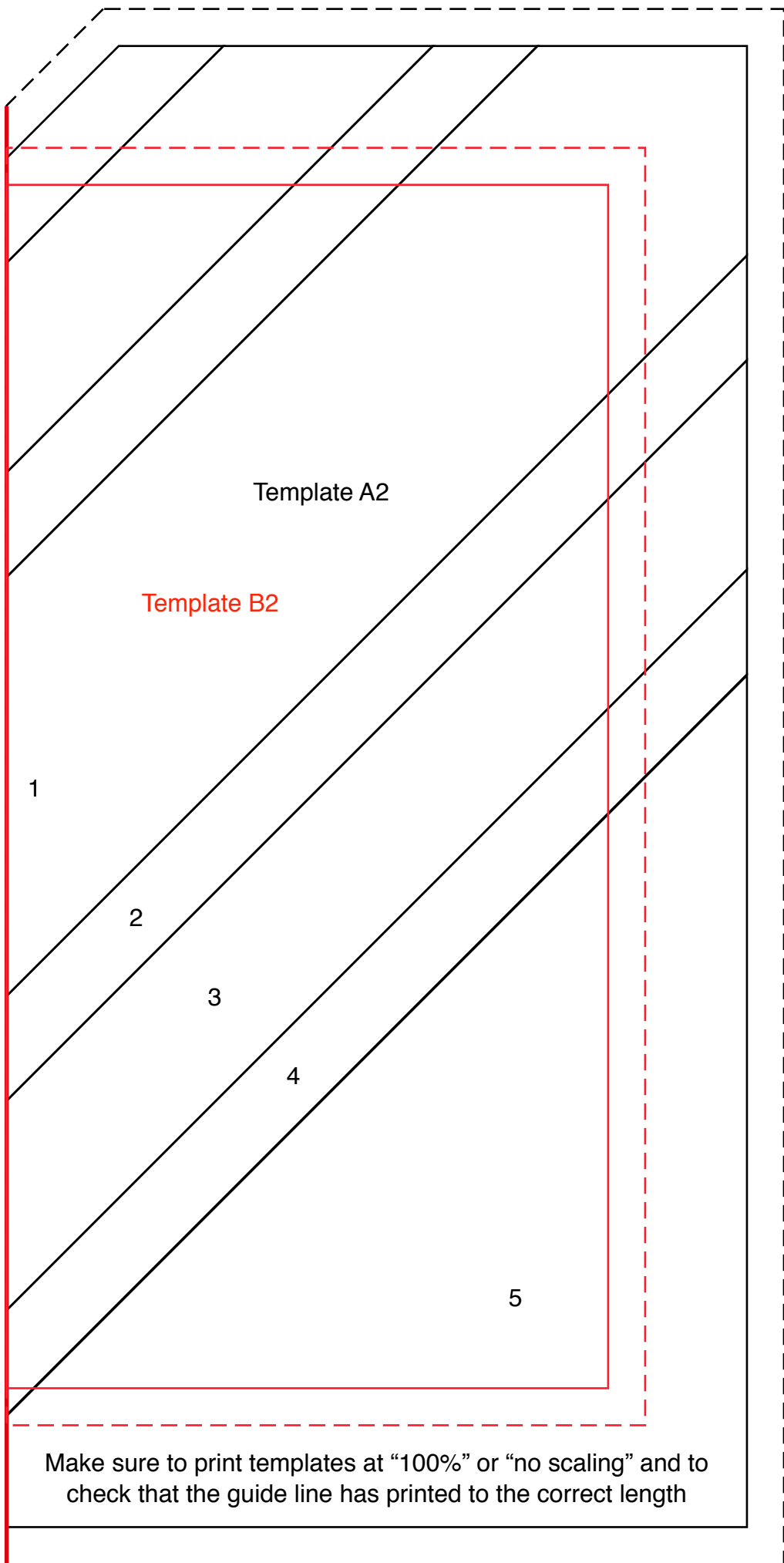


fig 2-3

## Finishing the cushion

1. Sew the binding strips end to end using diagonal or straight seams as preferred and press wrong sides together along the length to make a double fold binding.
2. Make a quilt sandwich, basting together the back (if you are using a back), the wadding and the top.
3. Quilt as desired then trim square, removing excess wadding and backing. We quilted a diagonal cross-hatch of lines approximately  $\frac{3}{4}$ " apart using a white 40wt Aurifil thread on the front and back.
4. Hem one vertical edge of each of the backing pieces – hem the right side of one piece and the left side of the other piece.
5. Overlap one backing piece over the other, pin to the cushion front, wrong sides together, zigzag around the four edges to secure and trim away excess backing fabric.
6. Bind, taking care to mitre the corners.





Template A2

Template B2

1

2

3

4

5

Make sure to print templates at "100%" or "no scaling" and to check that the guide line has printed to the correct length

5 1/4 in





2168/Q Forest Scene



2168/G Forest Scene



2169/Q Trees



2171/Q Leaf Ditzzy



2171/G Leaf Ditzzy



2169/T Trees



2170/G Animal Scatter



2170/S Animal Scatter



2170/Q Animal Scatter



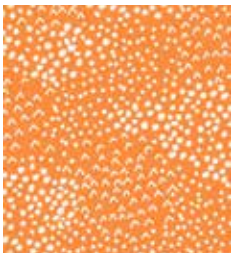
2170/T Animal Scatter



2172/Y Foxes



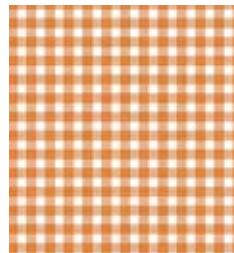
2172/G Foxes



2165/N Storm



2174/N Ditzzy



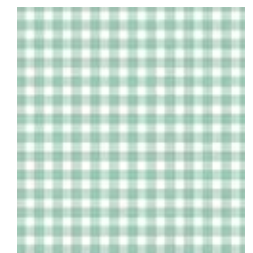
920\N64 Gingham



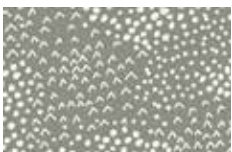
2165/T Storm



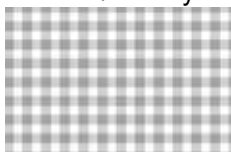
2174/T Ditzzy



920\T62 Gingham



2165/S Storm



920\S65 Gingham



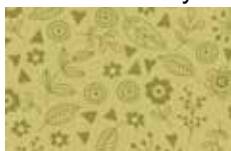
2165/Y2 Storm



2174/Y Ditzzy



2165/G Storm



2174/G Ditzzy



2173/1 Panel Each panel 60 x 112cms (24" x 44")