

# Flower Doodle



makower uk®

1384 Broadway  
New York, NY 10018  
(800) 223-5678

[www.andoverfabrics.com](http://www.andoverfabrics.com)

*Fabrics by*  
**Kim Schaefer**

Quilt designed by  
Kim Schaefer  
Quilt size: 64" x 84"

Revised 6/14/12



# Flower Doodle Spring Quilt

Introducing Andover Fabrics new collection: Good Seasons by Kim Schaefer  
Quilt designed by Kim Schaefer

Quilt finishes 64" x 84"

## Fabric Requirements

	Yardage				
*Fabric A	sash	1 1/8 yards	5791-T		
Fabric B	sash, border	2 1/8 yards	5792-K		
Fabric C	sash	1/4 yard	5793-G		
Fabric D	sash	1/2 yard	5793-T		
Fabric W	binding	5/8 yard	3135-K		
Fabrics E-V	piecing	fat 1/8 each of the following:			
	5794-K	5794-O	5794-P	5794-T	5795-G
	5795-K	5795-R	5795-T	5797-P	5797-T
	5797-Y	3135-G3	3135-LG1	3135-LP	3135-O3
	3135-R5	3135-W	3135-Y5		
*Backing (A)		5 yards	5791-T		

*Sassy, bold, and funky are words that spring to mind when you see this colorful lap-size quilt. The bright prints form a dazzling kaleidoscope of color and movement. Turn your favorite 'tween or teen onto quilting with this fun beginner's quilt. The oh-so-easy piecing is all strips.*

## Cutting Directions

**Note:** All measurements are cut sizes and include 1/4" seam allowances. A fat 1/8th is a 9" x 20"-22" cut. Borders and sashes are cut the exact lengths required plus 1/4" seam allowances. WOF designates the width of fabric from selvedge to selvedge (approximately 42" wide).

- Fabric A** Cut (4) strips 8 1/2" x WOF, cut crosswise and pieced to make (2) sashes 8 1/2" x 72 1/2"
- Fabric B** Fussy-cut (4) sashes 3 1/2" x 72 1/2", cut lengthwise from leafy stripe  
Fussy-cut (2) borders 6 1/2" x 72 1/2", cut lengthwise from black stripe  
Fussy-cut (2) borders 6 1/2" x 64 1/2", cut lengthwise from black stripe
- Fabric C** Cut (4) squares 8 1/2" x 8 1/2"
- Fabric D** Cut (5) squares 8 1/2" x 8 1/2"
- Fabric E-V** \*Cut (144) rectangles 2 1/2" x 4 1/2", cut crosswise
- Fabric W** Cut (7) strips 2 1/2" x WOF for binding
- Backing** Cut (2) panels 35" x 88", pieced to fit quilt top with overlap on all sides

\*Read Step 1 before cutting patches.

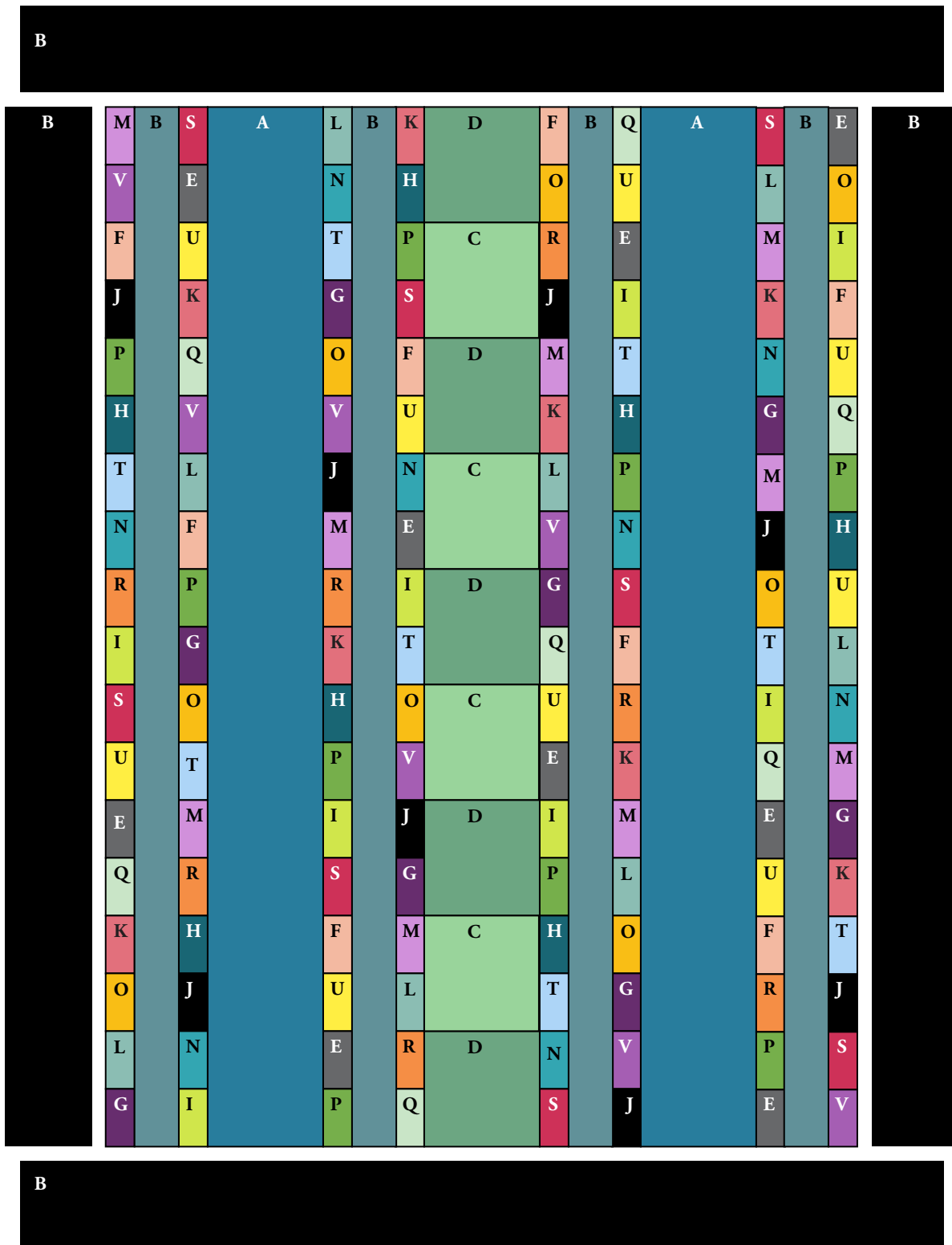
## Making and Assembling the Quilt

1. If you wish to make a quilt exactly as shown, cut 7 rectangles 2 1/2" x 4 1/2" from Fabrics H, Q, R, and V. Cut 9 rectangles from Fabrics E, M, P, and U. From all other fabrics E-V, cut 8 rectangles each. If you prefer to make your own version, cut 8 rectangles from each of the 18 fabrics. You need a total of 144 rectangles.
2. Refer to the Quilt Diagram for the following steps. Arrange the 144 rectangles from Fabrics E-V into 8 vertical rows of 18 patches each, arranging as desired or as shown on the diagram. Press seam allowances toward the bottom of the strips.
3. Join 4 C and 5 D squares alternately to make the center vertical row. Press the seam allowances toward the top of the strip.
4. Piece the Fabric A strips to make 2 sashes each 8 1/2" x 72 1/2". Hint: Cut these sashes the same length as the pieced rows from Steps 1 and 2.
5. Join the 8 narrow pieced rows, the center pieced row, the 2 pieced sashes, and Fabric B leafy sashes in the order shown. Press seam allowances away from the narrow pieced rows.
6. Sew long Fabric B black border strips to the sides. Sew short border strips to the top and bottom.

# Flower Doodle Quilt

## Finishing the Quilt

7. Layer the quilt with batting and backing and baste. Quilt in the ditch around borders, sashes, and rectangles. Quilt around the printed motifs in Fabric A-D patches. Bind to finish the quilt.



Quilt Diagram



# Flower Doodle

by Kim Schaefer



makower uk®



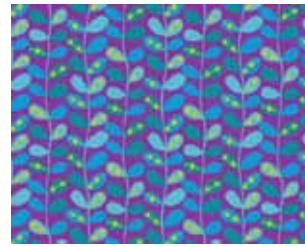
5791-T



5794-O



5794-T



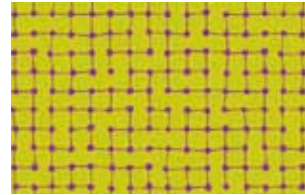
5794-P



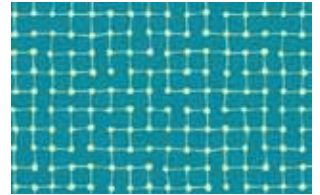
5794-K



5792-K



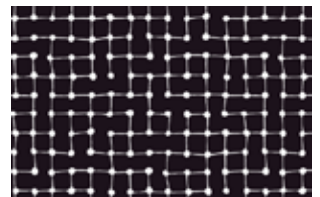
5795-G



5795-T



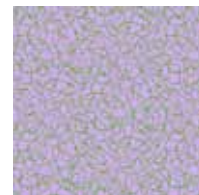
5795-R



5795-K



5797-Y



5797-P



5797-T



5793-G



5793-T

*From the  
 Tic Tac  
 collection  
 by Kim Schaefer*



3135-Y5



3135-O3



3135-LP



3135-R5



3135-W



3135-LG1



3135-G3



3135-K