

Tic Tac Flannel



Fabrics by Kim Schaefer



makower uk

1384 Broadway
New York, NY 10018
(800) 223-5678

www.andoverfabrics.com

Quilt designed by Kim Schaefer
Made and machine-quilted by Diane Minkley

Quilt size: 61" x 79"

6/30/10

Tic Tac Flannel Quilt

Introducing Andover Fabrics new collection: Tic Tac Flannel by Kim Schaefer

Quilt designed by Kim Schaefer

Quilt made and machine quilted by Diane Minkley

Quilt finishes 61" x 79"
48 pieced blocks 8" x 8"

Fabric Requirements

		Yardage	
Fabric A*	sashing, borders	2 ³ / ₈ yards	F3135-FB
Fabric B	blocks	1/2 yard	F3135-FL2
Fabric C	blocks	1/2 yard	F3135-FC
Fabric D	blocks	1/2 yard	F3135-FY
Fabric E	blocks	1/2 yard	F3135-FDY
Fabric F	blocks	1/2 yard	F3135-FO2
Fabric G	blocks	1/2 yard	F3135-FON
Fabric H	blocks	1/2 yard	F3135-FR
Fabric I	blocks	1/2 yard	F3135-FDR
Fabric J	blocks	1/2 yard	F3135-FN
Fabric K	blocks	1/2 yard	F3135-FP
Fabric L	blocks	1/2 yard	F3135-FB1
Fabric M	blocks	1/2 yard	F3135-FT
Fabric N	blocks	1/2 yard	F3135-FT1
Fabric O	blocks	1/2 yard	F3135-FG
Fabric P	blocks	1/2 yard	F3135-FDG
Fabric Q	blocks	1/2 yard	F3135-FV
Backing		5 yards	F3135-FDR

*includes binding

Use the Tic Tac Flannel collection to create an interesting geometric design using strips in different widths sewn together and recut into quilt blocks. In no time at all you will have a warm, colorful quilt in which to wrap around yourself and snuggle comfortably on those cold winter nights. Add a cup of hot chocolate and all will be perfect.

Cutting Directions

Note: Border WOF designates the width of fabric from selvedge to selvedge (approximately 42" wide).

- Fabric A** Cut (2) strips 8 1/2" x WOF; crosscut into (40) 1 1/2" x 8 1/2" strips
Cut (6) strips 1 1/2" x WOF; crosscut into (88) 1 1/2" x 2 1/2" rectangles
Cut (22) strips 1 1/2" x WOF; pieced together and cut into the following:
(9) 1 1/2" x 53 1/2" strips
(2) 1 1/2" x 73 1/2" strips
(2) 1 1/2" x 77 1/2" strips
(2) 1 1/2" x 61 1/2" strips
Cut (7) strips 2 1/2" x WOF for binding
- Fabrics B–Q** Cut (6) squares 2 1/2" x 2 1/2" each fabric
Cut a variety of 1"–2 1/2" x WOF strips from each fabric
- Backing** Cut (2) 87" x WOF lengths and piece to fit quilt top with 4" overlap on all sides

Making Strip Blocks

1. Join an assortment of 1"–2 1/2" x WOF B–Q strips on the long edges to make a strip set at least 12 1/2" wide. Press seams in one direction. Repeat to make a total of eight strip sets, varying placement of strip colors and widths in each set.
2. Apply a heavy coat of spray starch to each strip set and press dry. This will help to prevent stretching of bias edges after the blocks and triangles are cut from the strip sets.
3. Create an 8 1/2" x 8 1/2" square using template plastic; draw a line from one corner to the opposite corner to provide a straight line to help align with seams on the strip set. **Note:** A purchased 8 1/2" x 8 1/2"-square ruler may be used.

Tic Tac Flannel Quilt

- Referring to Diagram 1, place the square template on one of the strip sets; trace around the template with a permanent fabric marker. Pick up the template and move along the strip, aligning the corner of the template with the corner of the previously traced square. Continue to mark three squares along the length of the strip. After marking the third square, place the template on the end of the strip, with the corner aligned with the last marked square, and mark two edges of the template to make two triangles at the end of the strip.

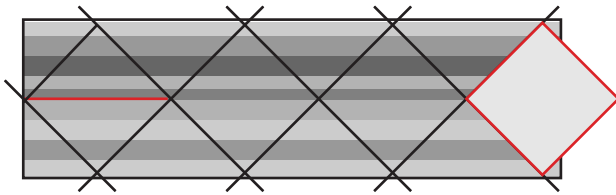


Diagram 1

- Using a rotary cutter and ruler or shears, cut along the marked lines to create three blocks, being extra careful not to cut into the triangles between the squares.
- Referring to Diagram 2, collect the six leftover triangles and join two along the long diagonal edges to make a square. Repeat to make two more squares with the remaining triangles. Press the center seam joining the two triangles to one side. Place the $8\frac{1}{2}$ "-square template on each pieced square and trim to complete three blocks.

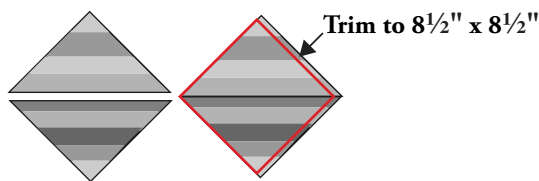


Diagram 2

- Repeat steps 4–6 with the remaining strip sets to make a total of 48 blocks.

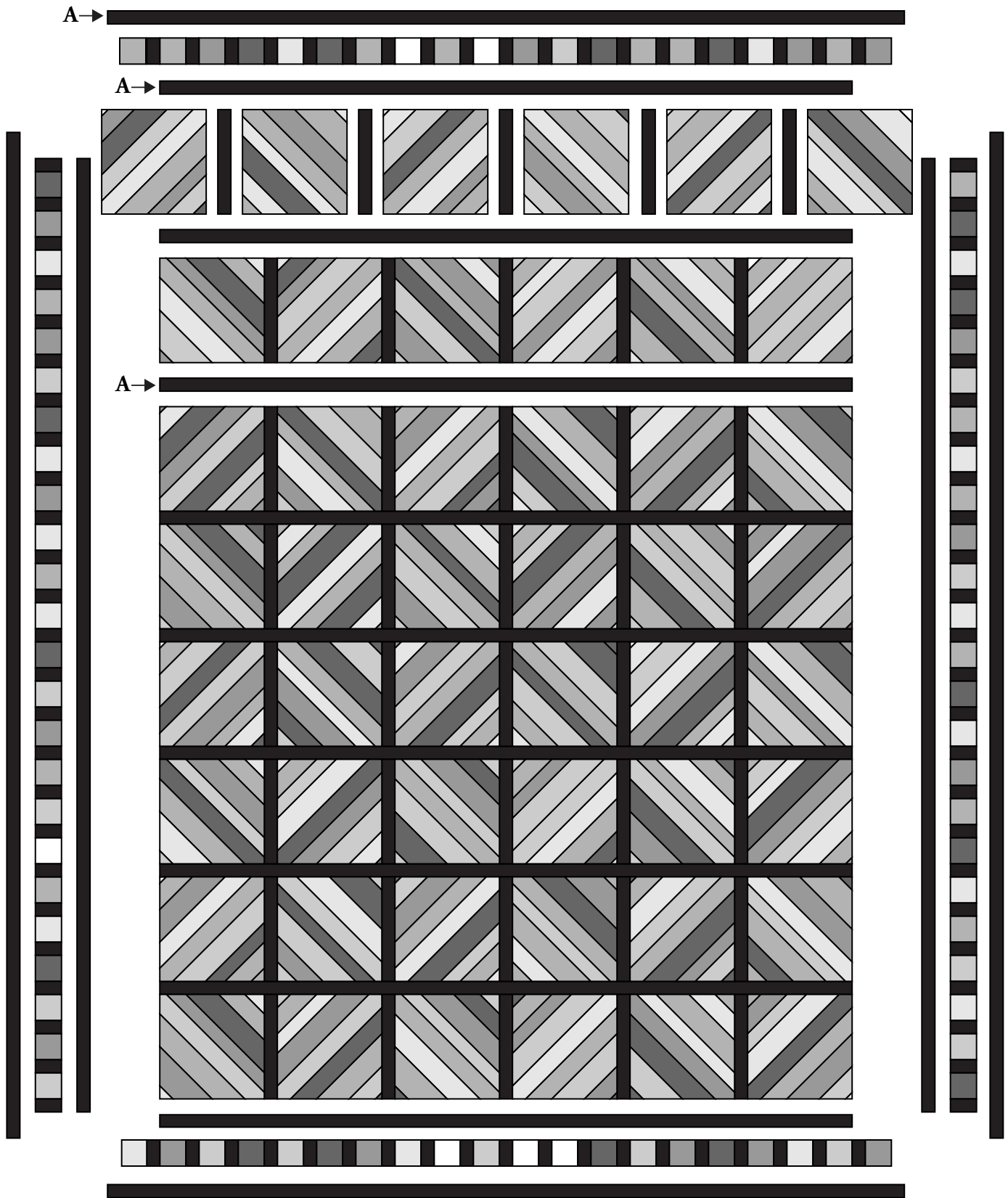
Quilt Assembly

- Refer to the Assembly Diagram for piecing the quilt center and adding borders.
- Arrange the pieced blocks in eight rows of six blocks each, alternating the orientation of the blocks. Join each row of blocks with five $1\frac{1}{2}$ " x $8\frac{1}{2}$ " fabric A strips, beginning and ending with a block. Press seams toward the strips.
- Join the sashed rows with nine $1\frac{1}{2}$ " x $53\frac{1}{2}$ " fabric A strips, beginning and ending with a strip, to complete the quilt center. Press seams toward the strips.
- Sew a $1\frac{1}{2}$ " x $73\frac{1}{2}$ " fabric A strip to opposite long sides of the pieced center. Press seams toward strips.
- Select (24) $2\frac{1}{2}$ " x $2\frac{1}{2}$ " squares fabrics B–Q; join the squares with (25) $1\frac{1}{2}$ " x $2\frac{1}{2}$ " fabric A rectangles, beginning and ending with a rectangle, to make a pieced side strip. Repeat to make a second pieced side strip. Press seams toward the fabric A rectangles.
- Sew a pieced side strip to opposite long sides of the quilt center. Press seams toward the fabric A strips.
- Repeat step 12 with (20) squares fabrics B–Q and (19) fabric A rectangles to make the top strip, beginning and ending with a square. Repeat to make the bottom strip. Press seams toward the fabric A rectangles. Sew the pieced strips to the top and bottom of the quilt center. Press seams toward the fabric A strips.
- Sew a $1\frac{1}{2}$ " x $77\frac{1}{2}$ " fabric A strip to opposite long sides and the $1\frac{1}{2}$ " x $61\frac{1}{2}$ " fabric A strips to the top and bottom of the quilt center to complete the quilt top.

Finishing the Quilt

- Layer quilt top with batting and backing. Quilt in the ditch of seams and as desired. Bind to finish the quilt.

Tic Tac Flannel Quilt



Quilt Diagram

Tic Tac Flannel

by Kim Schaefer



F3135-FL2*



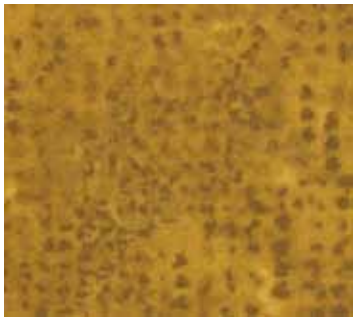
F3135-FLN



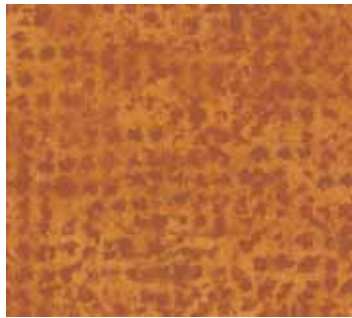
F3135-FC*



F3135-FY*



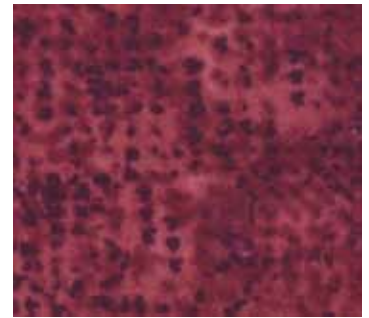
F3135-FDY*



F3135-F02*



F3135-FON*



F3135-FR*



F3135-FDR*



F3135-FN*



F3135-FP*



F3135-FB1*



F3135-FB*



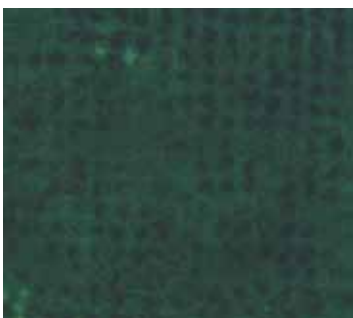
F3135-FT*



F3135-FT1*



F3135-FG*



F3135-FDG*



F3135-FV*



F3135-FK

*Indicates fabric used in quilt pattern.
Fabrics shown are 50% of actual size.

*Free Pattern Download
Available at
www.andoverfabrics.com*