

Entwine

GIUCY GIUCE

a
100
years



Homespun Quilt designed by: **Giucy Giuce & Janet Houts**

Quilt Size: **72" x 72"** • Skill Level: **Intermediate**

andoverfabrics.com

andover • [makower uk](http://makower.uk)

Free Pattern Download Available

1384 Broadway New York, NY 10018
Tel. (800) 223-5678 • andoverfabrics.com

Homespun Quilt

Introducing Andover Fabrics new collection: **Entwine** by Giucy Giuce
Quilt designed by Giucy Giuce & Janet Houts



Quilt finishes 72" x 72"

2 Block Y: 30" x 30"

2 Block Z: 30" x 30"

This stunning wall quilt is a mix of traditional and contemporary. Easy-to-piece half-square triangles and Flying Geese units make up the four over-sized star blocks, pieced sashes, and pieced border. Attention to color placement will ensure a successful project.

Cutting Directions

Note: Read assembly directions before cutting patches. All measurements are cut sizes and include 1/4" seam allowances. A fat 1/4 is an 18" x 20"-22" cut. WOF designates the width of fabric from selvedge to selvedge (approximately 42" wide).

Fabric 1

Cut (36) rectangles 3 1/2" x 6 1/2" for Flying Geese

Cut (92) squares 3 1/2" x 3 1/2" for FG and border

Cut (112) squares 4" x 4" (or 3 7/8") for HST
(read Step 1 before cutting)

Fabrics 2, 6, 7 From each:

Cut (8) squares 4" x 4" (or 3 7/8") for HST

Fabrics 3, 13, 16 From each:

Cut (8) rectangles 3 1/2" x 6 1/2" for Flying Geese

Cut (16) squares 3 1/2" x 3 1/2" for Flying Geese

Fabrics 4, 10 From each:

Cut (16) rectangles 3 1/2" x 6 1/2" for Flying Geese

Fabrics 5, 18 From each:

Cut (12) squares for HST

Fabric 8

Cut (5) squares 6 1/2" x 6 1/2" for Square-in-a-Square

Fabric 9

Cut (32) squares 3 1/2" x 3 1/2" for Flying Geese

Cut (36) squares 4" x 4" (or 3 7/8") for HST

Fabrics 11, 12 From each:

Cut (16) squares 3 1/2" x 3 1/2" for Flying Geese

Fabric 14

Cut (36) rectangles 3 1/2" x 6 1/2" for Flying Geese

Cut (8) squares 4" x 4" (or 3 7/8") for HST

Fabric 15

Cut (32) squares 3 1/2" x 3 1/2" for Flying Geese

Cut (12) squares 4" x 4" (or 3 7/8") for HST

Fabric Requirements

		Yardage	Fabric
Fabric 1	blocks	3 yards	Confetti-L
Fabric 2	blocks	fat 1/4 yard	Checkers-P
Fabric 3	blocks	3/8 yard	Intersect-B
Fabric 4	blocks	3/8 yard	Intersect-G
Fabric 5	blocks	fat 1/4 yard	**Intersect-P
Fabric 6	blocks	fat 1/4 yard	Intersect-R
Fabric 7	blocks	fat 1/4 yard	Intersect-T
Fabric 8	blocks	fat 1/4 yard	Intersect-Y
Fabric 9	blocks	1 yard	Plaid-C
Fabric 10	blocks	3/8 yard	Plaid-O
Fabric 11	blocks	fat 1/4 yard	Plaid-P
Fabric 12	blocks	fat 1/4 yard	Plus-G
Fabric 13	blocks	3/8 yard	Plus-P
Fabric 14	blocks	3/4 yard	Sashiko-B
Fabric 15	blocks	1/2 yard	Sashiko-C
Fabric 16	blocks	3/8 yard	Sashiko-E
Fabric 17	blocks	1 1/4 yards	Sashiko-P
Fabric 18	blocks	fat 1/4 yard	Static-C
Fabric 19	blocks	fat 1/4 yard	Static-O
Fabric 20	blocks	fat 1/4 yard	Static-R
*Fabric 21	blocks	fat 1/4 yard	Static-T
Binding		5/8 yard	*Static-T
Backing		4 1/2 yards	**Intersect-P

Fabric 17

Cut (8) rectangles 3 1/2" x 6 1/2" for Flying Geese

Cut (48) squares 3 1/2" x 3 1/2" for Flying Geese

Cut (32) squares 4" x 4" (or 3 7/8") for HST

Fabric 19

Cut (20) squares 3 1/2" x 3 1/2" for Square-in-a-Square

Fabric 20

Cut (4) rectangles 3 1/2" x 6 1/2" for Flying Geese

Cut (8) squares 4" x 4" (or 3 7/8") for HST

Fabric 21

Cut (8) rectangles 3 1/2" x 6 1/2" for Flying Geese

Cut (16) squares 3 1/2" x 3 1/2" for Flying Geese

Binding

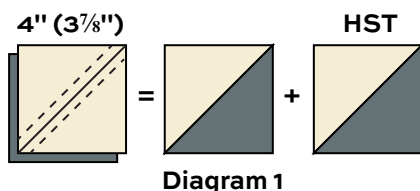
Cut (8) strips 2 1/2" x WOF for binding

Backing

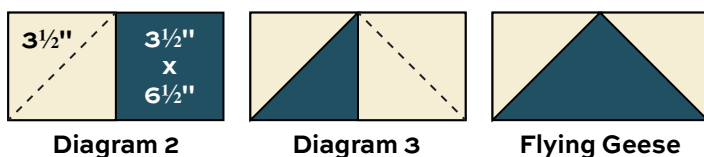
Cut (2) panels 40" x 80", pieced to fit quilt top with overlap on all sides

Making the Quilt

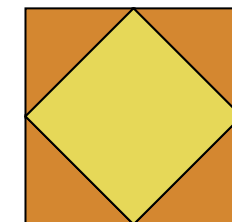
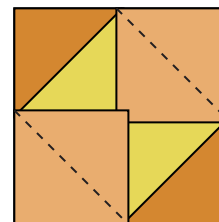
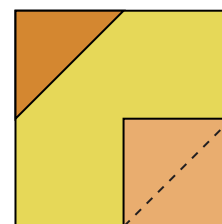
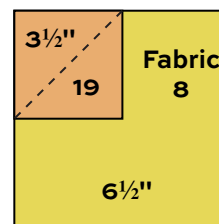
1. The quilt is made entirely of easy-to-piece half-square triangles (HST) that finish 3" square, 3" x 6" Flying Geese, and 6" Square-in-a-Square units. Measure each unit after stitching to be certain that all parts will join together.
2. Use your favorite method to make HST, or follow these directions. Cut squares 4" for HST that will be trimmed after stitching. If you prefer not to trim, cut squares 3⁷/₈". You need 72 HST made with Fabric 1 and Fabric 9. Draw a diagonal line on the wrong side of each Fabric 1 (4" or 3⁷/₈") square (Diagram 1). Place a marked square on a Fabric 9 square, right sides together. Sew 1/4" seam on each side of the marked line; cut apart on the marked line. Press open to make pieced HST. Trim to 3¹/₂" square if needed. Make 72 HST alike. Set aside.



3. Likewise, make 24 HST using Fabric 1 and Fabric 15 squares. Make 16 HST with Fabrics 1 and 7, and 64 HST with Fabrics 1 and 17. Set aside to be used in all 4 blocks.
4. Referring to the HST diagrams, make 24 HST with Fabrics 1 and 5 and 16 HST with Fabrics 2 and 6. Set these aside for 2 Block Y.
5. Make 24 HST with Fabrics 1 and 18 and 16 HST with Fabrics 14 and 20. Set these aside for 2 Block Z.
6. All blocks, sashes, and the border use Flying Geese units that finish 3" x 6". The Flying Geese diagrams indicate which fabrics are used to make each F.G. Draw a diagonal line on the wrong side of 2 fabric 3¹/₂" squares cut from one of the fabrics shown. Place a marked square on one end of a fabric 3¹/₂" x 6¹/₂" rectangle, right sides together. Sew on the marked line; trim away and discard excess fabric (Diagram 2). Press open. Repeat this process on the opposite end of the rectangle to make a Flying Geese Unit (Diagram 3). Make the number indicated. Set aside for later, keeping the FG for each part of the quilt in separate piles.

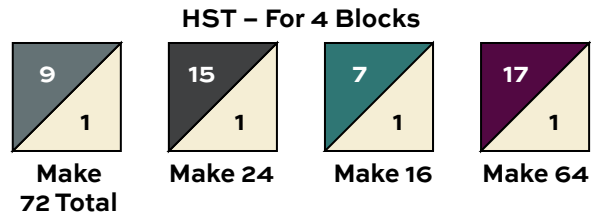


7. The centers of the blocks and the center of the quilt are Square-in-a-Square units made with quick stitch-and-flip piecing methods. Draw a diagonal line on the wrong side of all Fabric 19 squares. Place a marked square on a Fabric 8 square, right sides together, aligning raw edges at the corner. Stitch on the drawn line; trim away and discard excess fabric (Diagram 4). Press open. Repeat on the opposite corner, watching orientation of the sewing (Diagram 5). Repeat on the remaining corners (Diagram 6). Make 5 Square-in-a-Square units all alike.

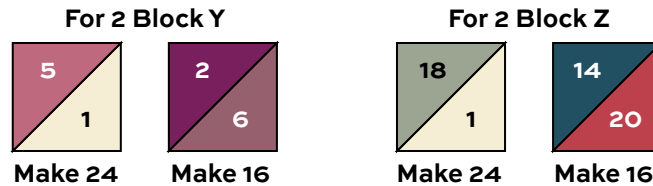


8. Refer to the Block and Quilt Diagram for the remaining steps. Look at the Block Y and gather all units required for one Block Y. Position the HST and Flying Geese into 9 rows, with one Square-in-a-Square in the center. Stand back to be certain all the units are turned correctly. Looking through the wrong end of binoculars or a camera may help you see any mistakes. Once you are satisfied, join the parts into rows, and then join the rows. Make a second Block Y just like this. Likewise, arrange and join the units to make 2 Block Z.

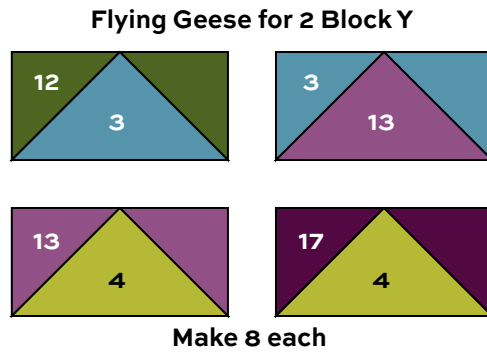
9. Each sash is made with 4 Flying Geese made with Fabrics 1 and 9, 2 FG made with Fabrics 1 and 17, 3 made with Fabrics 1 and 15, and 1 made with Fabrics 15 and 20. Referring to the Quilt Diagram, arrange these FG units to make a sash. Stand back to be certain that you have rotated the FG correctly. Join the 10 FG to make a sash. Make 4 sashes all alike.



10. Sew a sash between a Block Y and a Block Z, noting placement of the Fabric 20 Flying Geese unit. Make a second block row, again noting placement of the blocks and the Fabric 20 Flying Geese unit. Sew a Square-in-a-Square between the remaining sashes. Join the block rows with the center sash row, being certain that Block Ys are in opposite corners from one another.

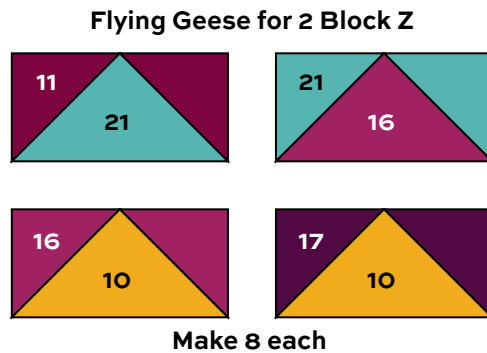


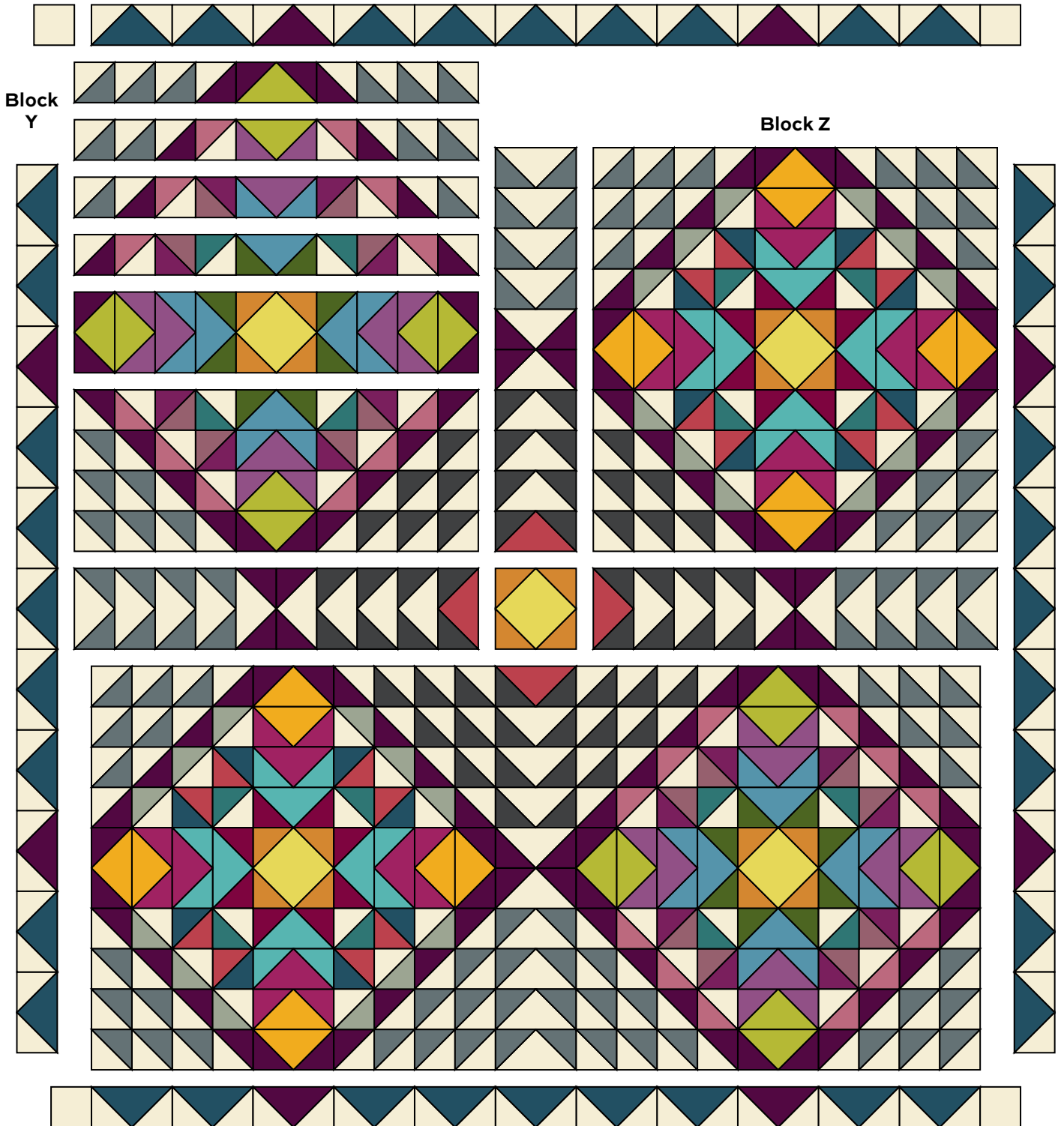
11. To make a pieced border, join 9 FG with Fabrics 1 and 14, and 2 FG with Fabrics 1 and 17, noting placement. Make 4 borders alike. Sew borders to opposite sides of the quilt. Join a Fabric 1 square to each end of remaining borders and sew to top and bottom.



Finishing the Quilt

12. Layer the quilt with batting and backing and baste. Quilt in the ditch around borders, sashes, and block patches. Bind to finish the quilt.





Block and Quilt Diagram

Entwine

GIUCY GIUCE



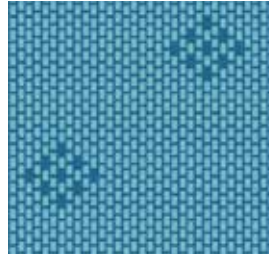
100
years



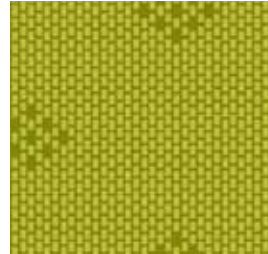
WV-Confetti-L*



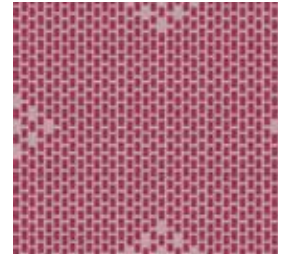
WV-Checkers-P*



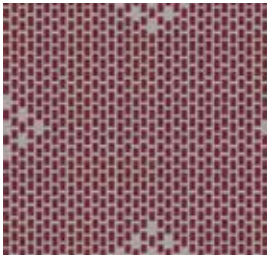
WV-Intersect-B*



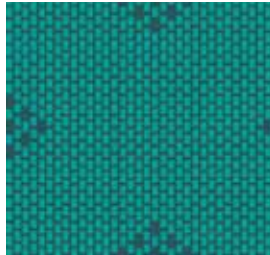
WV-Intersect-G*



WV-Intersect-P*



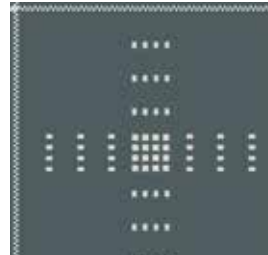
WV-Intersect-R*



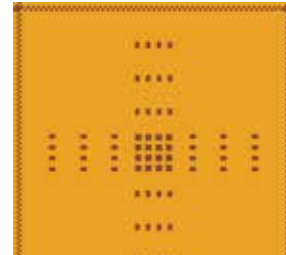
WV-Intersect-T*



WV-Intersect-Y*



WV-Plaid-C*



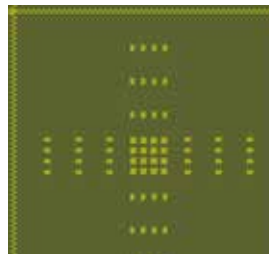
WV-Plaid-O*



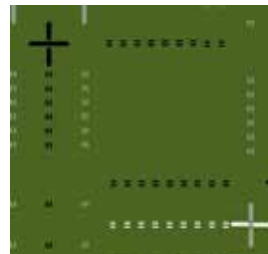
WV-Plaid-P*



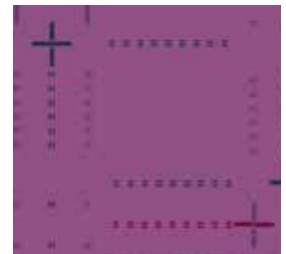
WV-Plaid-R



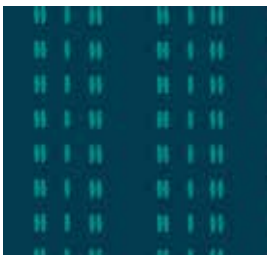
WV-Plaid-V



WV-Plus-G*



WV-Plus-P*



WV-Sashiko-B*



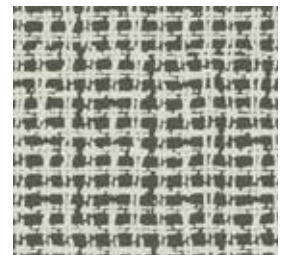
WV-Sashiko-C*



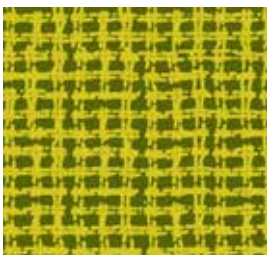
WV-Sashiko-E*



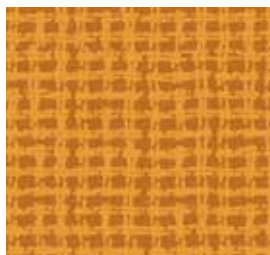
WV-Sashiko-P*



WV-Static-C*



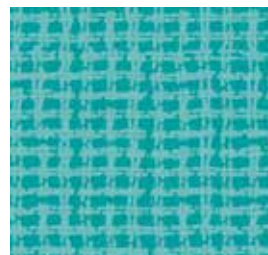
WV-Static-G



WV-Static-O*



WV-Static-R*



WV-Static-T*

*Indicates fabrics used in quilt pattern.

Fabrics shown are 100% of actual size.

andover



makower.uk

Free Pattern Download Available

1384 Broadway New York, NY 10018
Tel. (800) 223-5678 • andoverfabrics.com