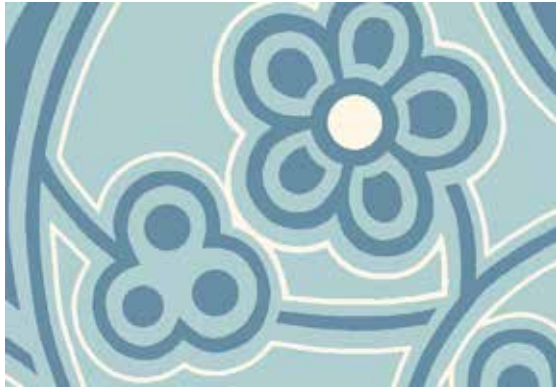


# Downton Abbey®

FABRICS BY KATHY HALL



Edith's Grand Entrance  
Quilt Design: **Tiffany Hayes**

Quilt Size: **72" x 96"**

[andoverfabrics.com](http://andoverfabrics.com)

## About Downton Abbey®

In addition to the women's fabric collections, we've also included four additional patterns that are unmistakably Downton. Each companion print is colored to complement and tie together the women's collections, and sets the scene for each character, just as Downton Abbey does.

Downton™ and Downton Abbey®. ©2013  
Carnival Film & Television Limited. All Rights Reserved.

andover

•  
•  
•  
•  
•  
makower uk  
*The Henley Studio*

Free Pattern Download Available

1384 Broadway New York, NY 10018  
Tel. (800) 223-5678 • [andoverfabrics.com](http://andoverfabrics.com)

# Edith's Grand Entrance



Introducing Andover Fabrics new collection: Downton Abbey®  
 Quilt design by Tiffany Hayes • <http://www.needleinahayesstack.biz>

Quilt finishes 72" x 96"  
 Block size: 12" square

## Cutting Directions

**Note: Read assembly directions before cutting patches.** All measurements are cut sizes and include 1/4" seam allowances. WOF designates the width of fabric from selvedge to selvedge (approximately 42" wide).

**Fabric A** Cut (4) side borders 2 1/2" x 84 1/2"  
 Cut (4) top/bottom borders 2 1/2" x 72 1/2"  
 Cut (51) rail fence strips 2 1/2" x 12 1/2"

**Fabric B** Cut (2) side borders 2 1/2" x 84 1/2"  
 Cut (2) top/bottom borders 2 1/2" x 72 1/2"  
 Cut (51) rail fence strips 2 1/2" x 12 1/2"  
 Cut (54) squares 5 1/4", cut in half diagonally twice

**Fabric C** Cut (3) 13 1/4" squares, cut in half diagonally twice  
 Cut (9) 5 1/4" squares, cut in half diagonally twice

**Fabric D** Cut (3) 13 1/4" squares, cut in half diagonally twice  
 Cut (9) 5 1/4" squares, cut in half diagonally twice  
 Cut (9) strips 2 1/2" x WOF for binding

**Fabric E** Cut (2) 13 1/4" squares, cut in half diagonally twice  
 Cut (5) 5 1/4" squares, cut in half diagonally twice

**Fabric F** Cut (2) 13 1/4" squares, cut in half diagonally twice  
 Cut (5) 5 1/4" squares, cut in half diagonally twice

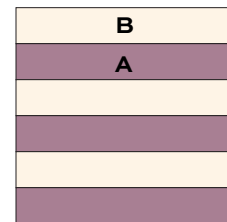
**Backing** Cut yardage in half, piece to fit quilt top with overlap on all sides

## Fabric Requirements

		Yardage	Fabric
<b>Fabric A</b>	squares	2 1/2 yards	7390-P
<b>Fabric B</b>	squares	3 1/4 yards	7330-UGL
<b>Fabric C</b>	squares	3/4 yard	7327-O
<b>Fabric D</b>	squares, binding	1 1/2 yards	7327-B
<b>Fabric E</b>	squares	5/8 yard	7328-OG
<b>Fabric F</b>	squares	5/8 yard	7328-B
<b>Backing</b>		6 yards	7329-O

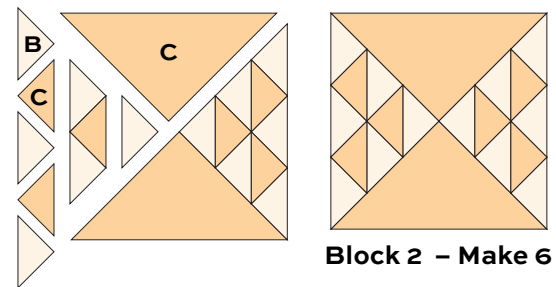
## Making the Quilt

- Combine 3 Fabric A and 3 Fabric B strips as shown. Make 17 Block 1 Rail Fence blocks.

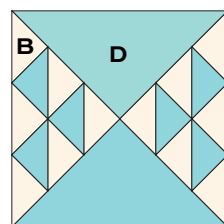


Block 1 – Make 17

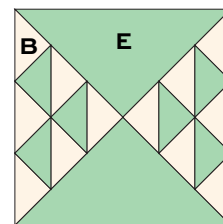
- Combine 3 Fabric C triangles and 6 Fabric B triangles to make 2 pieced triangle units. Sew B/C triangle units to large Fabric C triangles to make block halves. Join the 2 halves to make a block. Make the number of blocks shown using Fabrics D/B, E/B, and F/B.



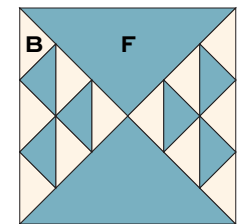
Block 2 – Make 6



Block 3 – Make 6



Block 4 – Make 3



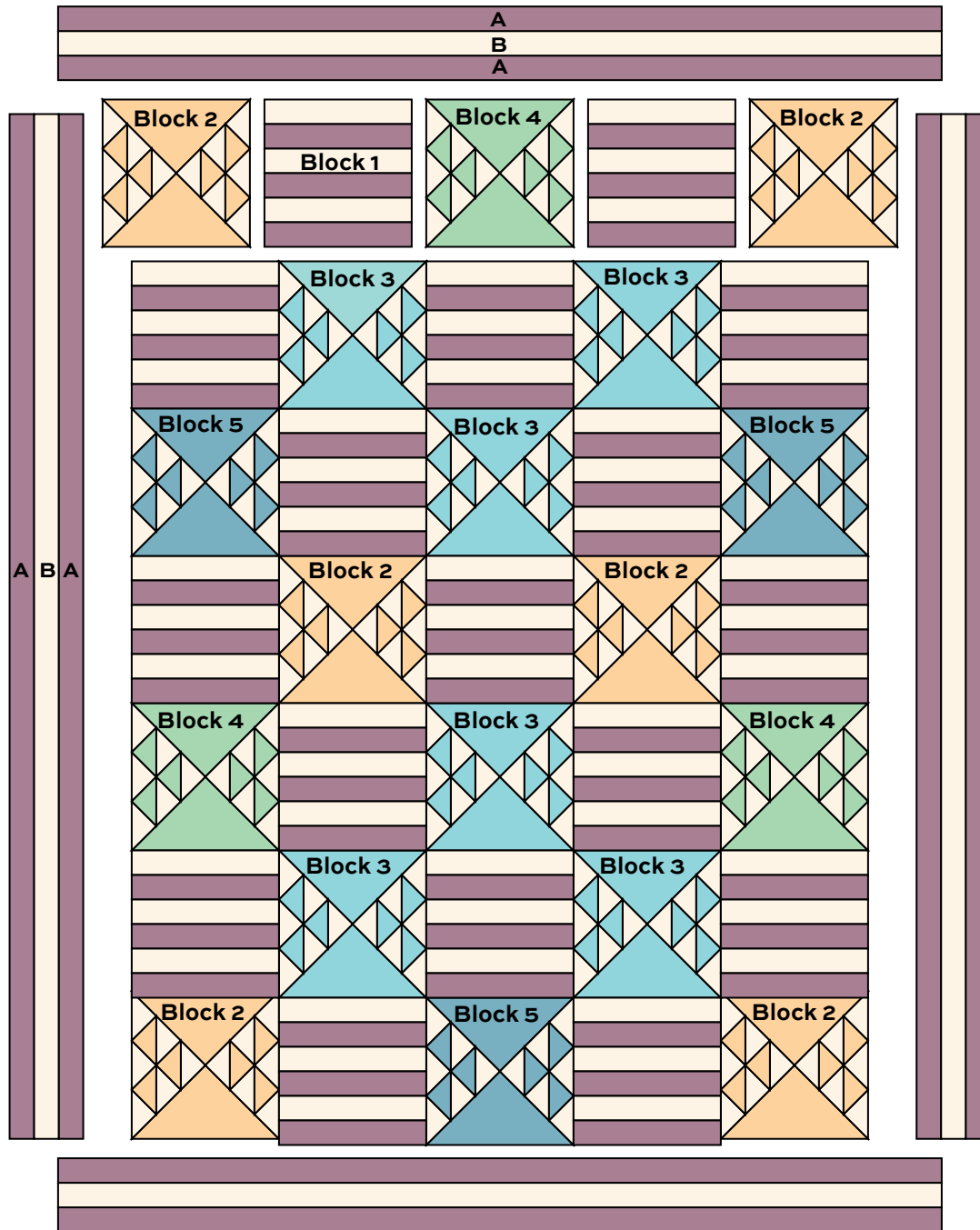
Block 5 – Make 3

# Edith's Grand Entrance Quilt

- Refer to Quilt Assembly Diagram for placement of blocks and sew together into rows as shown.
- Sew two  $2\frac{1}{2}$ " x  $84\frac{1}{2}$ " Fabric A border strips to opposite sides of a  $2\frac{1}{2}$ " x  $84\frac{1}{2}$ " Fabric B border strip. Repeat. Sew borders to the sides of the quilt.
- Sew two  $2\frac{1}{2}$ " x  $72\frac{1}{2}$ " Fabric A border strips to opposite sides of a  $2\frac{1}{2}$ " x  $72\frac{1}{2}$ " Fabric B border strip. Repeat. Sew borders to top and bottom of the quilt.

## Finishing the Quilt

- Layer the quilt with batting and backing and baste. Quilt as desired. Bind to finish the quilt.



Quilt Assembly Diagram



# Downton Abbey®



## The Women's Collection



7317-N\*



7330-ET\*



7330-GK\*



7330-OGL\*



7331-EB



7331-PK



7331-RG



7332-B\*



7332-K\*



7332-OG\*



7390-BR\*



7390-P\*



7390-RB\*

## Dowager Countess Collection



7318-K\*



7318-P\*



7319-K\*



7319-P\*



7320-K\*



7320-P\*

## Lady Edith Collection



7327-B\*



7327-O\*



7328-B\*



7328-OG\*



7329-B\*



7329-O\*

## Lady Mary Collection



7321-G\*



7321-R\*



7322-B\*



7322-R\*



7323-GN\*



7323-RB\*

## Lady Sybil Collection



7324-B\*



7324-E\*



7325-B\*



7325-ET\*



7326-B\*



7326-E\*

\*Indicates fabrics used in quilt pattern. Fabrics shown are 30% of actual size.

andover



makower uk  
*The Henley Studio*

Free Pattern Download Available

1384 Broadway New York, NY 10018  
Tel. (800) 223-5678 • andoverfabrics.com