

Crystal Farm

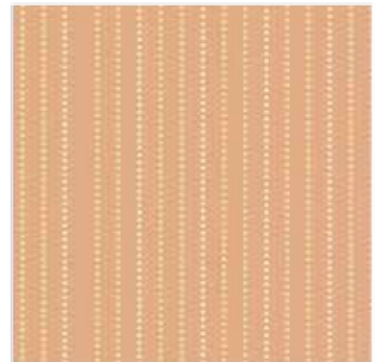
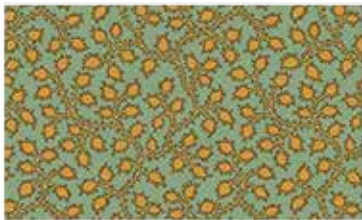
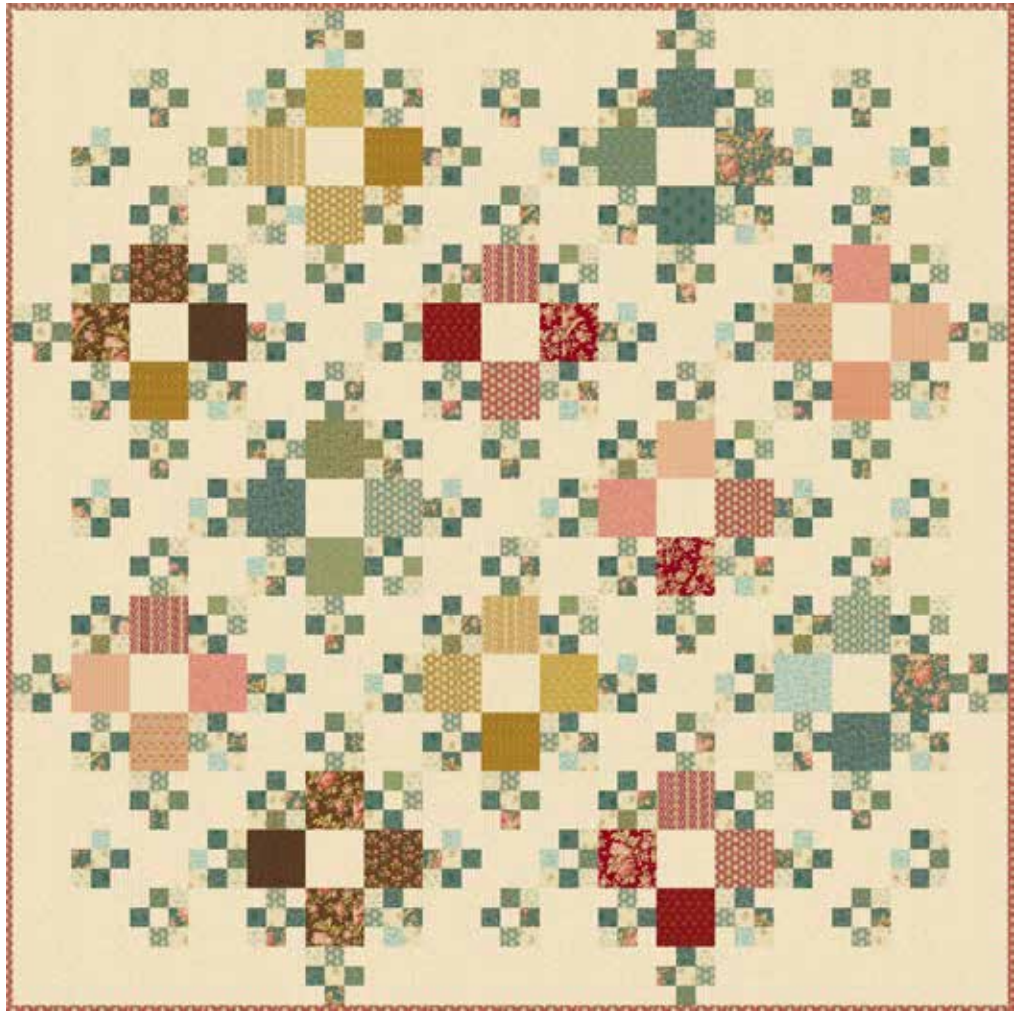
BY LAUNDRY BASKET QUILTS



Country Living
Quilt Design:
Edyta Sitar

Quilt Size: 102" x 102"

andoverfabrics.com



andover



makower uk
The Henley Studio

Free Pattern Download Available

1384 Broadway New York, NY 10018
Tel. (800) 223-5678 • andoverfabrics.com

Country Living



Featuring Andover Fabrics new Collection: Crystal Farm by Laundry Basket Quilts

Quilt designed by Edyta Sitar

Quilt finished 102" x 102"

Cutting Directions

Note: Read assembly directions before cutting patches. Borders are cut to exact length required plus ¼" seam allowance. WOF designates the width of fabric from selvedge to selvedge (approximately 42" wide).

Fabric A Cut (31) assorted 2 ½" x WOF strips.
Cut (2) 6 ½" x WOF strips. Sub-cut the strips into (12) 6 ½" squares.

Fabric B Cut (38) assorted 2 ½" x WOF strips.

Fabric C Cut (11) 6 ½" x WOF strips. Sub-cut the strips into (65) 6 ½" squares.
Cut (8) 6 ½" x 30 ½" WOF strips.
Cut (4) 6 ½" x 24 ½" WOF strips.

Fabric D Cut (1) 6 ½" x WOF strip. Sub-cut the strip into (2) 6 ½" squares.

Fabric E Cut (1) 6 ½" x WOF strip. Sub-cut the strip into (2) 6 ½" squares.

Fabric F Cut (1) 6 ½" x WOF strip. Sub-cut the strip into (2) 6 ½" squares.

Fabric G Cut (1) 6 ½" x WOF strip. Sub-cut the strip into (3) 6 ½" squares.

Fabric H Cut (1) 6 ½" x WOF strip. Sub-cut the strip into (2) 6 ½" squares.

Fabric I Cut (1) 6 ½" x WOF strip. Sub-cut the strip into (3) 6 ½" squares.

Fabric J Cut (1) 6 ½" x WOF strip. Sub-cut the strip into (2) 6 ½" squares.

Fabric K Cut (1) 6 ½" x WOF strip. Sub-cut the strip into (3) 6 ½" squares.

Fabric L Cut (1) 6 ½" x WOF strip. Sub-cut the strip into (3) 6 ½" squares.

Fabric Requirements

		Yardage	Fabric
Fabric A	9-patch blocks (greens)	½ yard of each	*
Fabric B	9-patch blocks (creams)	⅞ yard of each	**
Fabric C	background, borders	5 yards	8625-L
Fabric D	blocks	¼ yard	8619-Y
Fabric E	blocks	¼ yard	8617-Y
Fabric F	blocks	¼ yard	8616-Y
Fabric G	blocks	¼ yard	8624-Y
Fabric H	blocks	¼ yard	8615-N
Fabric I	blocks	¼ yard	8614-L
Fabric J	blocks	¼ yard	8620-N
Fabric K	blocks	¼ yard	8617-R
Fabric L	blocks	¼ yard	8614-R
Fabric M	blocks	¼ yard	8619-R
Fabric N	blocks	¼ yard	8623-E
Fabric O	blocks	¼ yard	8618-E
Fabric P	blocks	¼ yard	8622-E
Fabric Q	blocks, binding	1 ⅛ yards	8616-R
Fabric R	blocks	¼ yard	8624-E
Backing		9 ¼ yards	8615-L

*8614-T, 8616-T, 8619-T, 8620-T, 8621-T, 8623-T, 8625-T and 8627-T

**8619-L, 8622-L, 8627-L and 8625-L

Fabric M Cut (1) 6 ½" x WOF strip. Sub-cut the strip into (2) 6 ½" squares.

Fabric N Cut (1) 6 ½" x WOF strip. Sub-cut the strip into (3) 6 ½" squares.

Fabric O Cut (1) 6 ½" x WOF strip. Sub-cut the strip into (2) 6 ½" squares.

Fabric P Cut (1) 6 ½" x WOF strip. Sub-cut the strip into (3) 6 ½" squares.

Fabric Q Cut (1) 6 ½" x WOF strip. Sub-cut the strip into (3) 6 ½" squares.
Cut (10) 2 ½" x WOF strips for the binding.

Fabric R Cut (1) 6 ½" square.

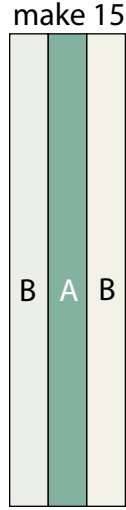
Backing Cut (3) 110" x WOF strips. Sew the strips together and trim to make (1) 110" x 110" back.

Country Living

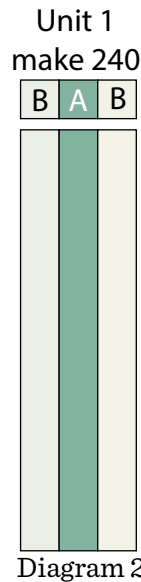
Making the Quilt

1. Block Assembly

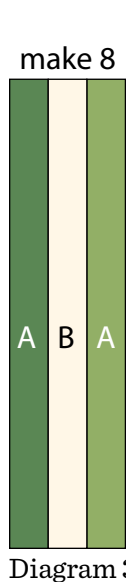
Sew (1) 2 1/2" x WOF Fabric B strip to each side of (1) 2 1/2" x WOF Fabric A strip lengthwise to make (1) BAB strip set (Diagram 1). Repeat to make (15) BAB strip sets total.



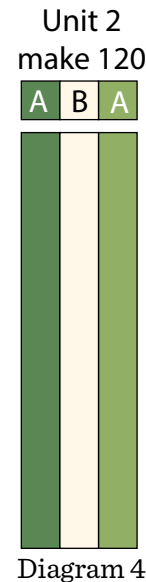
2. Cut the BAB strip sets into (240) 2 1/2" x 6 1/2" Unit 1 strips (Diagram 2).



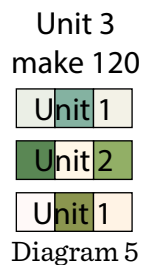
3. Sew (1) 2 1/2" x WOF Fabric A strip to each side of (1) 2 1/2" x WOF Fabric B strip lengthwise to make (1) ABA strip set (Diagram 3). Repeat to make (8) ABA strip sets total.



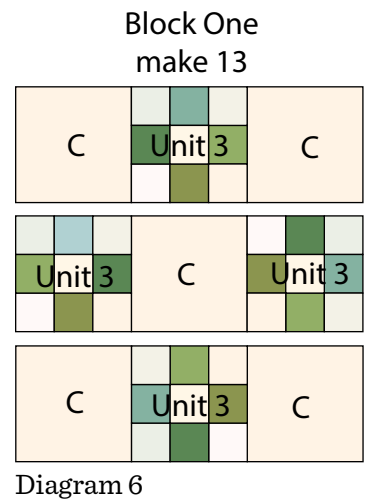
4. Cut the ABA strip sets into (120) 2 1/2" x 6 1/2" Unit 2 strips (Diagram 4).



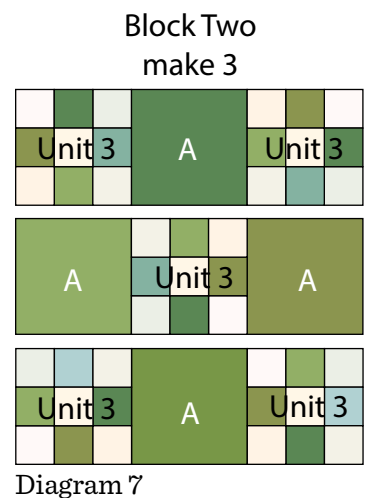
5. Sew (1) Unit 1 strip to the top and to the bottom of (1) Unit 2 strip lengthwise to make (1) Unit 3 block (Diagram 5). Repeat to make (120) Unit 3 blocks total.



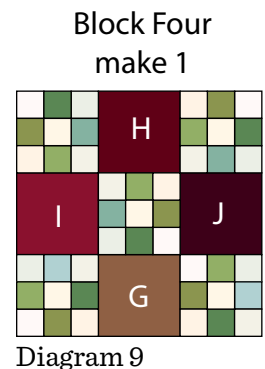
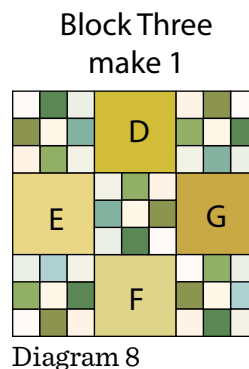
6. Sew (1) 6 1/2" Fabric C square to each side of (1) Unit 3 block to make the top row. Repeat to make the bottom row. Sew (1) Unit 3 block to each side of (1) 6 1/2" Fabric C square to make the middle row. Sew the (3) rows together to make (1) Block One square (Diagram 6). Repeat to make (13) Block One squares total.



7. Sew (1) Unit 3 block to each side of (1) 6 1/2" Fabric A to make the top row. Repeat to make the bottom row. Sew (1) 6 1/2" Fabric A to each side of (1) Unit 3 block to make the middle row. Sew the (3) rows together to make (1) Block Two square (Diagram 7). Repeat to make (3) Block Two squares total.



8. Repeat Step 7 and use Diagrams 8 through 16 for fabric identification and location to make (1) each block, Block Three - Block Eleven.



Block Five
make 1

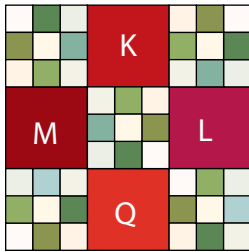


Diagram 10

Block Six
make 1

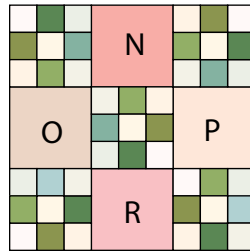


Diagram 11

Block Seven
make 1

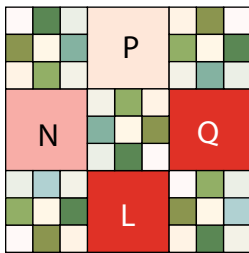


Diagram 12

Block Eight
make 1

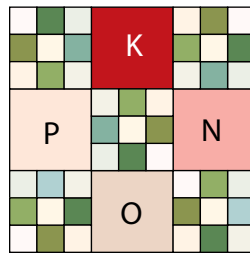


Diagram 13

Block Nine
make 1

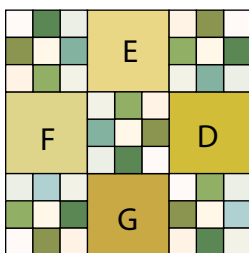


Diagram 14

Block Ten
make 1

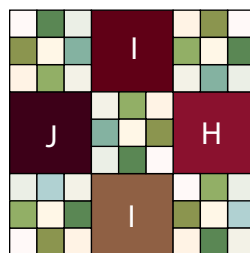


Diagram 15

Block Eleven
make 1

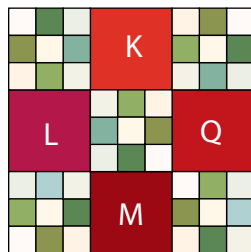


Diagram 16

9. Sew (1) 6 1/2" x 24 1/2" Fabric C strip, (1) Unit 3 block, (1) 6 1/2" x 30 1/2" Fabric C strip, (1) Unit 3 block and (1) 6 1/2" x 24 1/2" Fabric C strip together end to end and in that order to make (1) Side Border. Repeat to make a second Side Border.

10. Sew (3) 6 1/2" x 30 1/2" Fabric C strips and (2) Unit 3 blocks together end to end and alternating them to make the Top Border. Repeat to make the Bottom Border.

Quilt Top Assembly

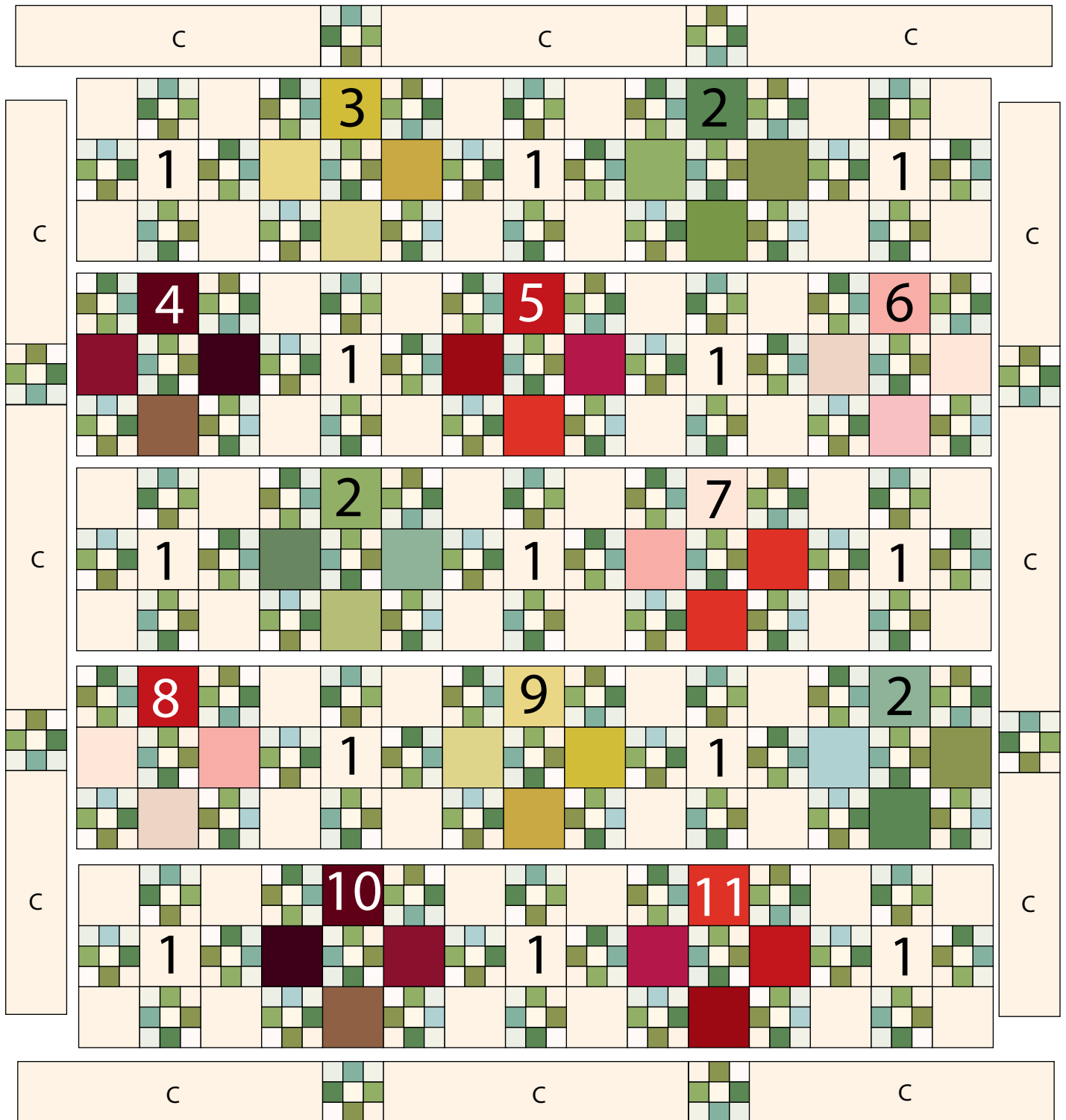
(Refer to the Quilt Layout when assembling the quilt top.)

11. Sew (1) Block One square, (1) Block Three square, (1) Block One square, (1) Block Two square and (1) Block One square together in that order to make Row One.
12. Sew (1) Block Four square, (1) Block One square, (1) Block Five square, (1) Block One square and (1) Block Six square together in that order to make Row Two.
13. Sew (1) Block One square, (1) Block Two square, (1) Block One square, (1) Block Seven square and (1) Block One square together in that order to make Row Three.
14. Sew (1) Block Eight square, (1) Block One square, (1) Block Nine square, (1) Block One square and (1) Block Two square together in that order to make Row Four.
15. Sew (1) Block One square, (1) Block Ten square, (1) Block One square, (1) Block Eleven square and (1) Block One square together in that order to make Row Five.
16. Sew the (5) rows together in numerical order to make the Center Block.
17. Sew (1) Side Border to each side of the Center Block.
18. Sew the Top and Bottom borders to the Center Block to make the quilt top.

Finishing the Quilt

19. Layer and quilt as desired.
20. Sew the (10) Fabric Q binding strips together, end to end with a 45-degree seams, to make the binding. Fold this long strip in half lengthwise with wrong sides together and press.
21. Bind as desired.

Country Living



Quilt Layout

Crystal Farm

BY LAUNDRY BASKET QUILTS



8614-L 1/4 yd



8614-N



8614-R 1/4 yd



8614-T 1/2 yd



8615-L 8 yds
(includes backing)



8615-N 1/4 yd



8616-R 1 1/4 yds
(includes binding)



8616-T 1/2 yd



8616-Y 1/4 yd



8617-R 1/4 yd



8617-Y 1/4 yd



8618-E 1/4 yd



8619-L 7/8 yd



8619-R 1/4 yd



8619-T 1/2 yd



8619-Y 1/4 yd



8620-N 1/4 yd



8620-T 1/2 yd



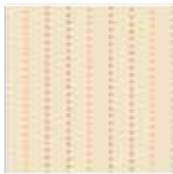
8621-L



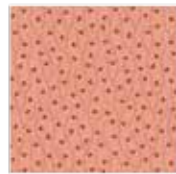
8621-T 1/2 yd



8622-E 1/4 yd



8622-L 7/8 yd



8623-E 1/4 yd



8623-T 1/2 yd



8624-E 1/4 yd



8624-Y 1/4 yd



8625-L 5 yds



8625-T 1/2 yd



8626-E



8626-L



8627-L 7/8 yd



8627-T 1/2 yd

About Our Fabrics

A recognized leader in the quilting industry, Andover Fabrics features designs by a wide variety of talented artists and licenses, including Downton Abbey and Eric Carle's Very Hungry Caterpillar. Catering to the tastes of creative and dedicated quilters, Andover has a style for everyone — authentic reproductions, romantic florals, modern and more.

Fabrics shown are 25% of actual size.

andover

makower uk
The Henley Studio

Free Pattern Download Available

1384 Broadway New York, NY 10018
Tel. (800) 223-5678 • andoverfabrics.com