

BLACK BIRD ACRES



Quilt designed by Jean Ann Wright

Finished size: 43" x 58"



1384 Broadway
New York, NY 10018
(800) 223-5678
www.andoverfabrics.com

Blackbird Acres Fabrics by
Nancy Murty

makower uk

Blackbird Acres Quilt

Introducing Andover Fabrics new collection: Blackbird Acres by Nancy Murty
Quilt designed by Jean Ann Wright

Fabric Requirements

		Yardage	Black
Fabric A	Fussy-cut squares	1 24" panel	5137-K
Fabric B	Border #4	1½ yards	5138-K
Fabric C	borders #1 & 3, pieced sash units	5/8 yards	5139-L
Fabric D	picture frames	1/8 yard	5140-G
Fabric E	picture frames	1/8 yard	5140-RN
Fabric F*	picture frames, binding	5/8 yard	5141-G
Fabric G	picture frames	1/8 yard	5141-O
Fabric H	border #2, picture frames	3/8 yard	5142-O
Fabric I	picture frames	1/8 yard	5143-G
Fabric J	pieced sash units, border #1	1/2 yard	5143-K
Fabric K	sashes	1/8 yard	5143-P
*includes binding			
Backing		3¾ yards	5142-N

Quilt finishes 43" x 58"
15 pieced blocks 6" x 6"

Bring country charm and nature's bounty into your home with this easy-to-piece quilt. The delightful vintage botanical illustrations are each cut individually from a printed fabric panel, and strip piecing makes the rest of the patchwork a snap.

Cutting Directions

Note: Measurements for borders are the exact length required plus ¼" seam allowances. WOF designates the width of fabric from selvedge to selvedge (approximately 42" wide).

Fabric A For the blocks, fussy-cut (15) pictures from the panel. Center the picture and cut a patch that measures 4½" x 4½"

Fabric B For border 4, from the length of the fabric, cut:
(2) borders 5½" x 48½" for sides
(2) borders 5½" x 43½" for top/bottom

Fabric C Cut (10) strips 2" x WOF
For border 3, piece strips as necessary and cut:
(2) borders 2" x 45½" for sides
(2) borders 2" x 33½" for top and bottom
For border 1, cut 1 strip into (20) squares 2" x 2"
Set (4) remaining strips aside for strip-pieced bands

Fabric D For picture frames, cut (2) strips 1½" x WOF From these strips, cut:
(6) rectangles 1½" x 4½"
(6) rectangles 1½" x 6½"

Fabric E For picture frames, cut (2) strips 1½" x WOF From these strips, cut:
(4) rectangles 1½" x 4½"
(4) rectangles 1½" x 6½"

Fabric F Cut (6) strips 2½" x WOF for binding
For picture frames, cut (2) strips 1½" x WOF From these strips, cut:
(4) rectangles 1½" x 4½"
(4) rectangles 1½" x 6½"

Fabric G For picture frames, cut (2) strips 1½" x WOF From these strips, cut:
(6) rectangles 1½" x 4½"
(6) rectangles 1½" x 6½"

Fabric H Cut (6) strips 2" x WOF
For border 2, piece strips as necessary and cut:
(2) borders 2" x 42½" for sides
(2) borders 2" x 30½" for top and bottom
For picture frames, cut (2) strips 1½" x WOF From these strips, cut:
(4) rectangles 1½" x 4½"
(4) rectangles 1½" x 6½"

Fabric I For picture frames, cut (2) strips 1½" x WOF From these strips, cut:
(6) rectangles 1½" x 4½"
(6) rectangles 1½" x 6½"

Fabric J Cut (2) strips 3½" x WOF and set aside for strip-pieced bands
For border 1, cut (2) strips 2" x WOF From these strips, cut:
(16) rectangles 2" x 6½"
(4) squares 2" x 2"

Fabric K For pieced sashes, cut (2) strips 2" x WOF From these strips, cut:
(24) squares 2" x 2"

Backing Cut (2) panels 47" x WOF, pieced to fit quilt top with 4" overlap

Blackbird Acres Quilt

Making the Quilt

1. Make the blocks. Frame the fussy-cut picture squares by adding the $1\frac{1}{2}$ " x $4\frac{1}{2}$ " rectangles to the sides of each picture and matching $1\frac{1}{2}$ " x $6\frac{1}{2}$ " rectangles to the top and bottom. Referring to the quilt diagram, use rectangles from fabrics D, E, F, G, H, and I. Set them aside.
2. Make the strip-pieced sash units. Referring to Diagram 1 sew a $3\frac{1}{2}$ " fabric J strip between 2 fabric C strips to make a band. Press the seam allowances toward the J. Make 2 bands like this. Cut each band into (19) 2" segments. You will have a total of 38 strip-pieced units.
3. Referring to the quilt assembly, join (4) 2" x 2" fabric K squares alternately with (3) strip-pieced units to make a sash row. Make (6) sash rows like this.
4. Referring to the quilt assembly diagram, join (4) strip-pieced units alternately with (3) blocks to make a block row. Make (5) block rows. Join the sash rows alternately with the block rows.
5. Make border 1. Referring to the quilt assembly diagram, join (6) 2" x 2" fabric C squares alternately with (5) 2" x $6\frac{1}{2}$ " fabric J rectangles. Make 2 side borders like this. Matching centers, ends, and seams, sew the borders to the sides of the quilt.
6. Similarly, join (4) 2" x 2" fabric C squares alternately with (3) 2" x $6\frac{1}{2}$ " fabric J rectangles. Add a 2" x 2" fabric J square to each end to make the top border. Repeat for the bottom border. Matching centers, ends, and seams, sew these borders to the top and bottom of the quilt.
7. Matching centers and ends, sew the longer fabric H border 2 strips to the sides of the quilt. Similarly, sew the shorter fabric H border 2 strips to the top and the bottom of the quilt.
8. In the same manner, add border 3 (fabric C) and border 4 (fabric B).

Finishing the Quilt

9. Layer quilt with batting and backing. Quilt in the ditch around borders and block patches. Quilt around the printed motifs in the blocks and in border 4. Bind to finish the quilt.



Quilt Diagram

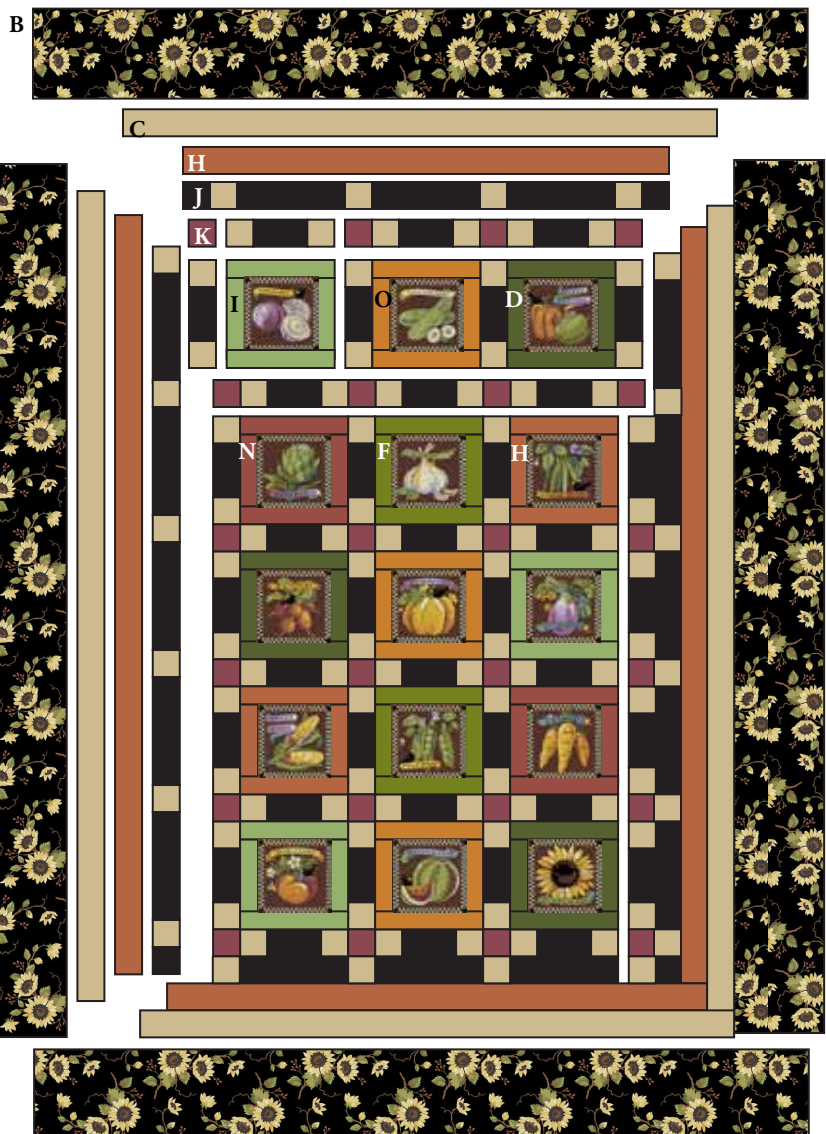
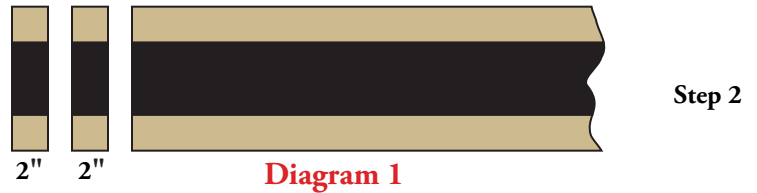
Blackbird Acres Quilt

Making the Quilt

1. Make the blocks. Frame the fussy-cut picture squares by adding the $1\frac{1}{2}$ " x $4\frac{1}{2}$ " rectangles to the sides of each picture and matching $1\frac{1}{2}$ " x $6\frac{1}{2}$ " rectangles to the top and bottom. Referring to the quilt diagram, use rectangles from fabrics D, E, F, G, H, and I. Set them aside.
2. Make the strip-pieced sash units. Referring to Diagram 1 sew a $3\frac{1}{2}$ " fabric J strip between 2 fabric C strips to make a band. Press the seam allowances toward the J. Make 2 bands like this. Cut each band into (19) 2" segments. You will have a total of 38 strip-pieced units.
3. Referring to the quilt assembly, join (4) 2" x 2" fabric K squares alternately with (3) strip-pieced units to make a sash row. Make (6) sash rows like this.
4. Referring to the quilt assembly diagram, join (4) strip-pieced units alternately with (3) blocks to make a block row. Make (5) block rows. Join the sash rows alternately with the block rows.
5. Make border 1. Referring to the quilt assembly diagram, join (6) 2" x 2" fabric C squares alternately with (5) 2" x $6\frac{1}{2}$ " fabric J rectangles. Make 2 side borders like this. Matching centers, ends, and seams, sew the borders to the sides of the quilt.
6. Similarly, join (4) 2" x 2" fabric C squares alternately with (3) 2" x $6\frac{1}{2}$ " fabric J rectangles. Add a 2" x 2" fabric J square to each end to make the top border. Repeat for the bottom border. Matching centers, ends, and seams, sew these borders to the top and bottom of the quilt.
7. Matching centers and ends, sew the longer fabric H border 2 strips to the sides of the quilt. Similarly, sew the shorter fabric H border 2 strips to the top and the bottom of the quilt.
8. In the same manner, add border 3 (fabric C) and border 4 (fabric B).

Finishing the Quilt

9. Layer quilt with batting and backing. Quilt in the ditch around borders and block patches. Quilt around the printed motifs in the blocks and in border 4. Bind to finish the quilt.



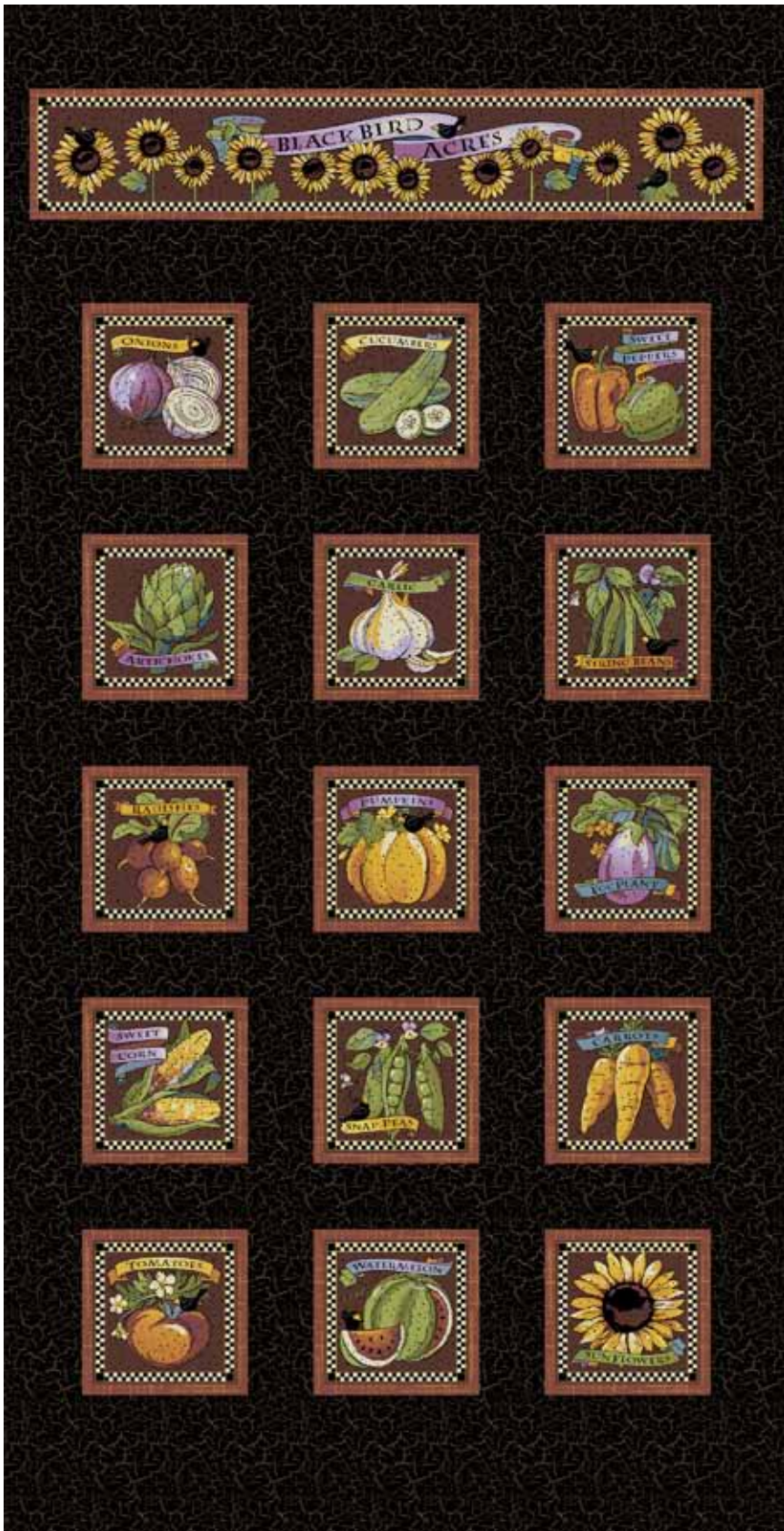
Quilt Diagram

Blackbird Acres

by Nancy Murty



makower uk®



5137-K*



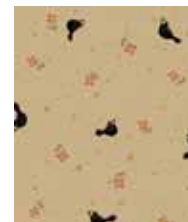
5138-RN



5138-K*



5139-B



5139-L*



5139-RN



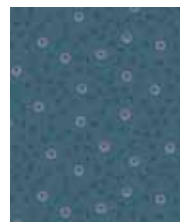
5140-G*



5140-RN*



5140-Y



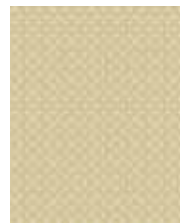
5141-B



5141-G*



5141-O*



5142-L



5142-N*



5142-O*



5143-G*



5143-K*



5143-P*

*Indicates fabric used in quilt pattern. Fabrics shown are 20% of actual size.