

Bel Air

FABRICS BY Lauren Marcella



Quilt Design: **Lauren Marcella**

Quilt Size: **51" x 59½"**

andoverfabrics.com



About Bel Air

An original take on the feel of old Hollywood with a bit of art deco. Care for a classic ladies' lunch in Palm Springs, Miami, or Beverly Hills? Bel Air will take you there.

andover



makower uk
The Henley Studio

Free Pattern Download Available

1384 Broadway New York, NY 10018
Tel. (800) 223-5678 • andoverfabrics.com

6/18/14

Bel Air Quilt



Introducing Andover Fabrics new collection: **BEL AIR** by Lauren Marcella

Quilt designed by Lauren Marcella

Quilt finishes 51" x 59½"
Blocks 12" x 12"

Elegant floral and geometric prints come together in this lovely wall quilt made with easy blocks. Choose from three colorways—one with a blend of aqua, black, and lavender; another in soft neutrals; the third with a touch of yellow.

Fabric Requirements

		Yardage	Aqua/Black	Gray	Blue/Yellow
Fabric A	setting	¾ yard	7682-K	7682-L	7682-Y
Fabric B	setting	⅝ yard	7683-K	7683-L	7683-Y
Fabric C	blocks	¼ yard	7684-K	7684-L	7684-Y
Fabric D	blocks	½ yard	7685-KT	7685-LC	7685-YB
Fabric E	blocks	½ yard	7686-KP	7686-LN	7686-Y
Fabric F	blocks	¾ yard	7687-K	7687-L	7687-YB
*Fabric G	blocks	¾ yard	A-T-Ripple	A-T-Sandstone	A-T-Laguna
Backing		3½ yards	7683-K	7683-L	7683-Y

*includes binding

Cutting Directions

Note: Read assembly directions before cutting patches. All measurements are cut sizes and include ¼" seam allowances. WOF designates the width of fabric from selvedge to selvedge (approximately 42" wide).

Fabric A Cut (6) squares 12½" x 12½"

Fabric B Cut (2) squares 18¼" x 18¼", cut in half diagonally twice to make 8 quarter-square triangles (6 will be used)

Fabric C Cut (6) squares 6½" x 6½"

Fabric D Cut (12) squares 6½" x 6½"

Fabric E Cut (1) square 9¾" x 9¾", cut in half diagonally twice to make 4 quarter-square triangles (2 will be used)
Cut (8) squares 6½" x 6½"

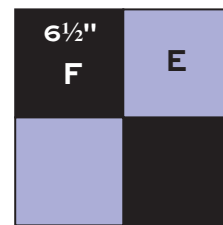
Fabric F Cut (2) squares 9¾" x 9¾", cut in half diagonally twice to make 8 quarter-square triangles
Cut (12) squares 6½" x 6½"
Cut (2) squares 5¼" x 5¼", cut in half diagonally to make 4 half-square triangles (cut slightly oversized)

Fabric G Cut (6) strips 2½" x WOF for binding
Cut (4) squares 6½" x 6½"

Backing Cut (2) panels 34" x 59", pieced to fit quilt top with overlap on all sides

Making the Quilt

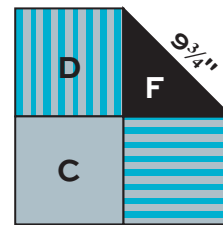
- Referring to the block diagrams, join appropriate squares or triangles to make the number of blocks shown. Press all seam allowances toward the darker fabric. Pay attention to the orientation of the stripes in Fabric D patches.



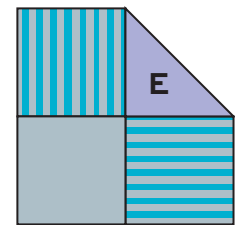
Block 1 – Make 4



Block 2 – Make 2



Block 3 – Make 4



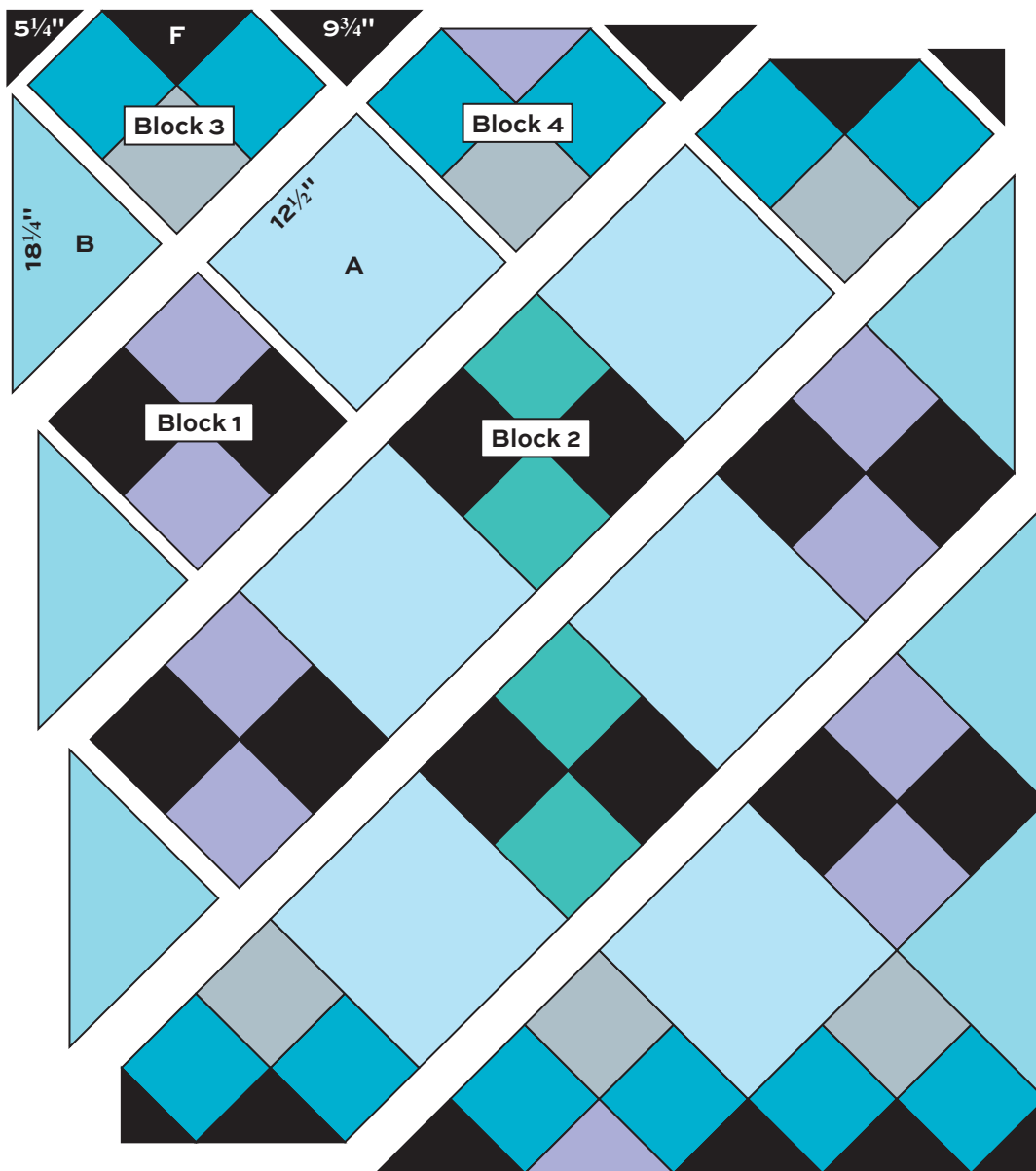
Block 4 – Make 2

Bel Air Quilt

2. Referring to the Quilt Diagram, on a large flat surface or design wall, arrange the blocks, Fabric A squares, and Fabric B and F triangles in diagonal rows. Stand back and check that all blocks are turned in the correct orientation. Join patches and blocks in diagonal rows. Finally, join the rows. Trim the small Fabric F triangles even with the edges of the quilt to square the corners.

Finishing the Quilt

3. Layer the quilt with batting and backing and baste. Quilt in the ditch around block patches. Quilt around the printed motifs in the blocks. Bind to finish the quilt.



Quilt Diagram

Bel Air

FABRICS BY LAUREN MARCELLA



7682-K*



7683-K*



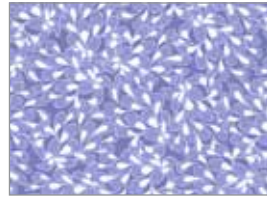
7684-K*



7685-KT*



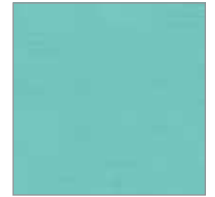
1867-P16



7686-KP*



7687-K*



A-T-RIPPLE*



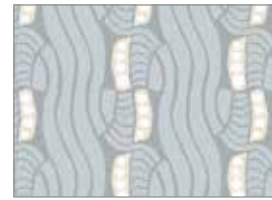
7682-L



7683-L



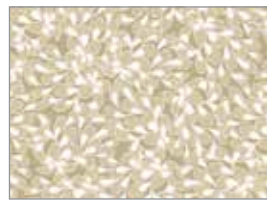
7684-L



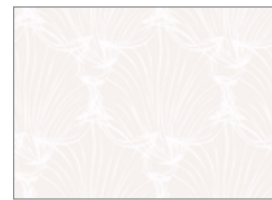
7685-LC



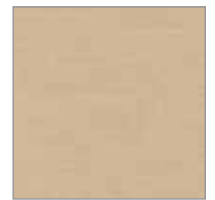
1867-C3



7686-LN



7687-L



A-T-SANDSTONE



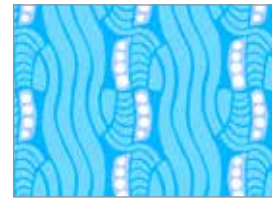
7682-Y



7683-Y



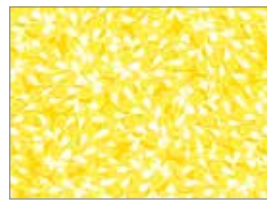
7684-Y



7685-YB



1867-W



7686-Y



7687-YB



A-T-LAGUNA

*Indicates fabrics used in quilt pattern. Fabrics shown are 25% of actual size.

andover

makower uk
The Henley Studio

Free Pattern Download Available

1384 Broadway New York, NY 10018
Tel. (800) 223-5678 • andoverfabrics.com