

Thoroughbreds

BY TWO CAN ART



Thoroughbred Stables
Quilt designed by:
Two Can Art
Quilt Size: **32" x 42"**
andoverfabrics.com

About Thoroughbreds

The majesty and elegance of the horse in motion or still is breathtaking. We hope to capture that beauty with this new collection. Noah's painted textures have their own movement and seem a perfect match for our Two Can Art Thoroughbreds. – *Patti Gay of Two Can Art*



andover

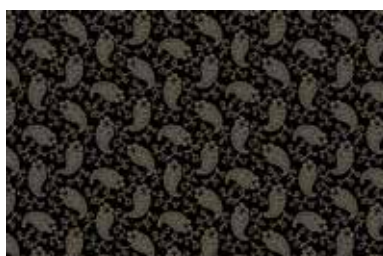


makower uk
The Henley Studio

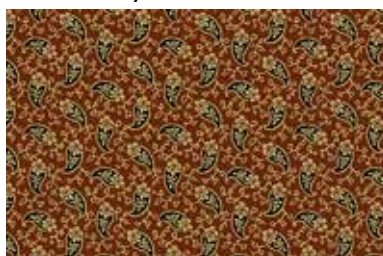
Free Pattern Download Available

1384 Broadway New York, NY 10018
Tel. (800) 223-5678 • andoverfabrics.com

Revised 8/25/17



8677-K 3/8 yd



8677-N 1/4 yd



8678-C 3/8 yd



8678-N Fat 1/8 yd (extra yds needed for backing)



8678-O Fat 1/4 yd



8679-C



8679-K 1/2 yd (includes binding)



8679-L Fat 1/4 yd



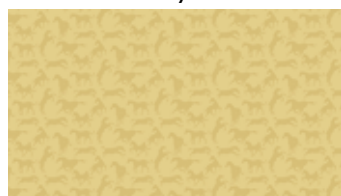
8364-N1



8679-N



8679-NR Fat 1/4 yd



8679-Y Fat 1/8 yd



8587-KR

FABRIC	5 KITS	10 KITS	20 KITS
115-K	1	1	1
FROM EACH	1	1	1
115-K	8677-K	8677-N	8678-C
8678-N	8678-O	8679-L	8679-K
8679-NR	8679-Y	1867-C1	

BACKING

8678-N	1	1	2
--------	---	---	---

Yardage needed for backing:
1 1/2 YDS per kit

Bolts needed to cut project kits.
15 yds = 1 bolt

Fabrics shown are 15% of actual size.
Fabrics used in quilt pattern are shown in black.

Blend with fabrics from **Dimples** by Gail Kessler and **Brushline** by Kim Schaefer



1867-C1 Fat 1/4 yd



8537-K



8537-L



8537-N



8537-O

Thoroughbreds

BY TWO CAN ART

andover : makower uk
: The Hanley Studio

Revised 8/25/17