

# Rough Hewn

ANDOVER FABRICS



Steel Works Quilt  
designed by: **Guicy Guice**

Quilt Size: **60" x 68"**

[andoverfabrics.com](http://andoverfabrics.com)

## About Rough Hewn

Industrial design mixed a rustic feel, Rough Hewn will add a fabulous patina to any project. Wood grains, tin ceilings and basket weave designs create a distressed look in a neutral palette.

andover

•  
• [makower.uk](http://makower.uk)  
•

Free Pattern Download Available

1384 Broadway New York, NY 10018  
Tel. (800) 223-5678 • [andoverfabrics.com](http://andoverfabrics.com)

3/15/19

# Rough Hewn BY ANDOVER FABRICS



9153-C 3/8 yd



9153-GL



9153-K 5/8 yd



9153-NL 3/8 yd



9153-O 3/8 yd



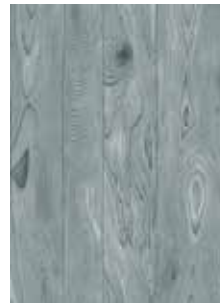
9154-L 1 yd



9154-O 3/8 yd



9154-R 3/8 yd



9155-C 3/8 yd



9155-L 3/8 yd



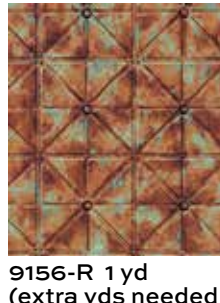
9155-N 3/8 yd



9156-C 3/8 yd



9156-N



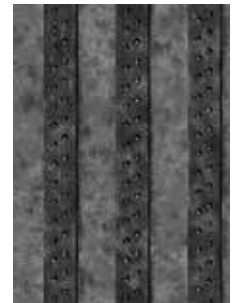
9156-R 1 yd  
(extra yds needed for backing)



9157-C 3/8 yd



9157-G



9157-K



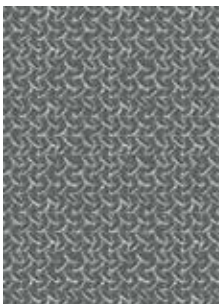
9158-G



9158-L 1/2 yd



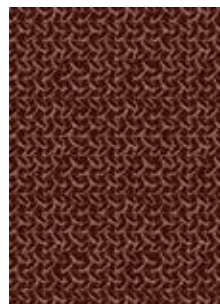
9158-N



9159-C 3/4 yd



9159-K 1 yd  
(includes binding)



9159-N

FABRICS	5 KITS	10 KITS	20 KITS
FROM EACH	1	1	2
	9154-L	9156-R	9159-K
FROM EACH	1	1	1
	9153-C	9153-K	9153-NL
	9154-O	9154-R	9155-C
	9155-N	9156-C	9157-C
	9159-C		9158-L
<b>BACKING</b>			
9156-R	2	3	6

Yardage needed for backing: 4 YDS per kit

Bolts needed to cut project kits. 5 yds = 1 bolt

Fabrics shown are 15% of actual size.

Fabrics used in featured quilt pattern are shown in black.

andover

makower uk