

# Riviera Rosé

BY RENÉE NANNEMAN



Quilt designed by:  
**Renée Nanneman**

Quilt Size: **76" x 76"**

[andoverfabrics.com](http://andoverfabrics.com)

## About Riviera Rosé

Riviera Rosé is filled with romantic reds to evoke feelings of love, warmth & comfort. The prints speak of gardens alive with bees, twining brambles, hand-woven baskets, age-old mosaic floors, stonework and cobblestone streets. When we close our eyes beneath a luxurious quilt, we can imagine traveling to ancient quaint villages along the Mediterranean coast of France and Italy. — Renée Nanneman

andover

•  
• [makower.uk](http://makower.uk)  
•

Free Pattern Download Available

1384 Broadway New York, NY 10018  
Tel. (800) 223-5678 • [andoverfabrics.com](http://andoverfabrics.com)



9083-K 2¼ yds



9083-R Fat ¼ yd



9084-K 1¼ yds



9084-N Fat ¼ yd



9084-R Fat ¼ yd



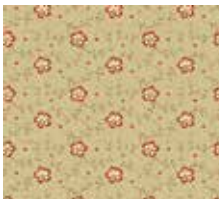
9085-L Fat ¼ yd



9085-R Fat ¼ yd



9085-RN Fat ¼ yd



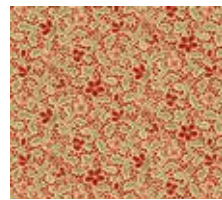
9086-L Fat ¼ yd



9086-R Fat ¼ yd  
(extra yds needed for backing)



9087-K Fat ¼ yd



9087-R Fat ¼ yd



9088-L Fat ¼ yd



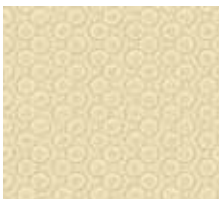
9088-N Fat ¼ yd



9089-N Fat ¼ yd



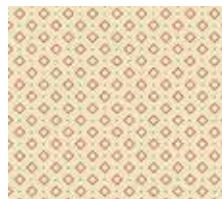
9089-R Fat ¼ yd



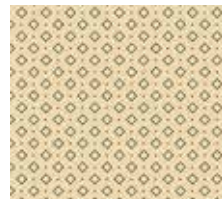
9090-L Fat ¼ yd



9090-R Fat ¼ yd



9091-LR Fat ¼ yd



9091-NR Fat ¼ yd



9093-L Fat ¼ yd



9093-R Fat ¼ yd



9094-K 1 yd  
(includes binding)



9094-R Fat ¼ yd

FABRIC	5 KITS	10 KITS	20 KITS
9083-K	1	2	4
9084-K	1	1	2
9094-K	1	1	2
FROM EACH	1	1	1
9083-R	9084-N	9084-R	9085-L
9085-R	9085-RN	9086-L	*9086-R
9087-K	9087-R	9088-L	9088-N
9089-N	9089-R	9090-L	9090-R
9091-LR	9091-NR	9092-N	9092-R
9093-L	9093-R	9094-R	9095-N
9095-R			

BACKING

*9086-R	2	4	7
---------	---	---	---

Yardage needed for backing: 5 YDS per kit

Bolts needed to cut project kits.

15 yds = 1 bolt

Fabrics shown are 25% of actual size.

All fabrics used in quilt pattern.

# Riveria Rosé

BY RENÉE NANNEMAN

andover

makower uk