

# Moiré

BY DI FORD-HALL



Moiré Quilt designed  
by: **Di Ford-Hall**

Quilt Size: **72" x 72"**

[andoverfabrics.com](http://andoverfabrics.com)

## About Moiré

Moiré is taken from the French word "to water". Moiré was considered the benchmark for sophisticated fabric used for high fashion and home furnishings with its watered, rippled appearance and polished sheen.

andover



[makower.uk](http://makower.uk)

Free Pattern Download Available

1384 Broadway New York, NY 10018  
Tel. (800) 223-5678 • [andoverfabrics.com](http://andoverfabrics.com)

# Moiré BY DI FORD-HALL

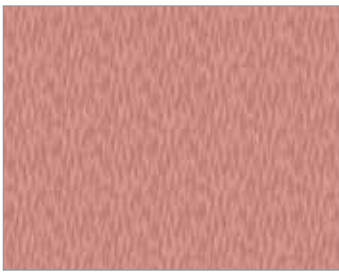
FABRIC	5 KITS	10 KITS	20 KITS	
*9257-L	1	2	4	
9257-N	1	1	2	
FROM EACH				
9257-E	9257-G	9257-G1	9257-G2	9257-G3
9257-L1	9257-N1	9257-O	9257-P	9257-P
9257-P1	9257-R	9257-T	9257-T1	9257-V
9257-Y	9257-Y1			
BACKING				
*9257-L	2	4	7	

Yardage needed for backing: 4¾ YDS per kit

Bolts needed to cut project kits. 15 yds = 1 bolt

Fabrics shown are 25% of actual size.

Fabrics used in quilt pattern are shown in black.



9257-E 3/8 yd



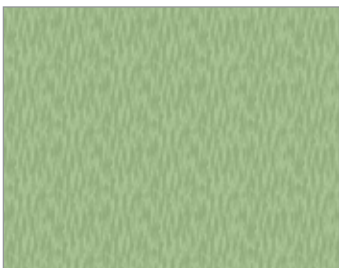
9257-G 3/4 yd



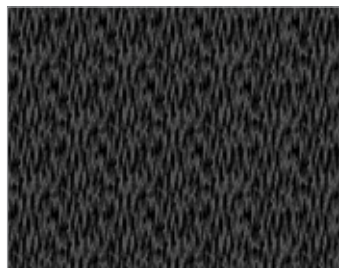
9257-G1 1/2 yd



9257-G2 Fat 1/4 yd



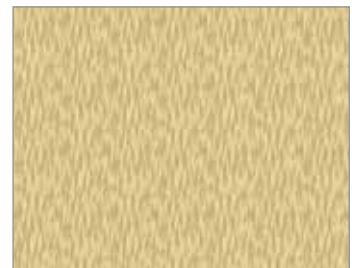
9257-G3 1/2 yd



9257-K Fat 1/4 yd



9257-L 2 1/4 yds (extra yds needed for backing)



9257-L1 5/8 yd



9257-N 1 yd (includes binding)



9257-N1 3/8 yd



9257-O Fat 1/4 yd



9257-P 3/8 yd



9257-P1 Fat 1/4 yd



9257-R 1/2 yd



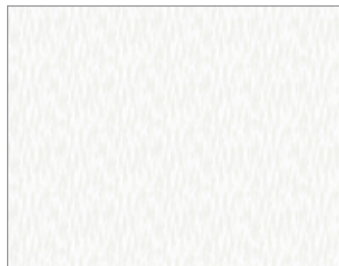
9257-T 1/2 yd



9257-T1 1/2 yd



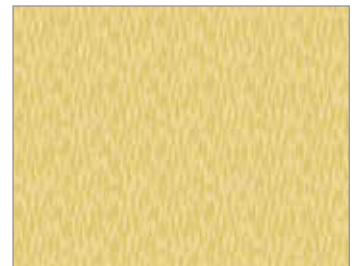
9257-V 3/8 yd



9257-WW



9257-Y 1/2 yd



9257-Y1 1/2 yd

andover



[makower.uk](http://makower.uk)