

Maling Road

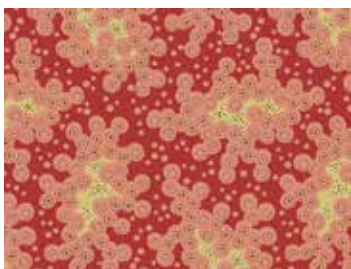
BY DI FORD-HALL



Primarily Patchwork
Quilt designed by:
Di Ford-Hall

Quilt Size: 62" x 62"

andoverfabrics.com



About Maling Road

Maling Road is the main road of the most charming shopping village in Melbourne, Australia. It was where my quilt shop, Primarily Patchwork, was located. The shop was on Theatre Place and was part of the landmark theatre built in the late 1800s. On this tiny street, you could find me six days a week for 24 years. — *Di Ford-Hall*

andover



makower uk
The Henley Studio

Free Pattern Download Available

1384 Broadway New York, NY 10018
Tel. (800) 223-5678 • andoverfabrics.com



8717-B



8717-R 5/8 yd



8718-BR



8718-NR



8718-RB Fat 1/4 yd



8719-BE



8719-NT 2 yds



8719-R



8720-B



8720-N Fat 1/4 yd



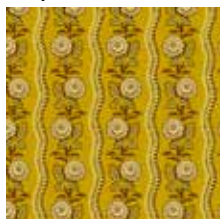
8720-RY



8721-B 1/2 yd



8721-N



8721-RY



8722-BE 5/8 yd



8722-NT



8722-RY 4 yds (backing)



8723-B



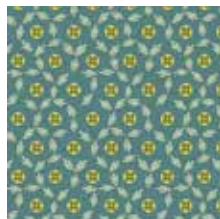
8723-N Fat 1/4 yd



8724-R 3/8 yd



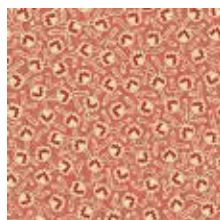
8724-RN Fat 1/4 yd



8725-B



8725-N Fat 1/4 yd



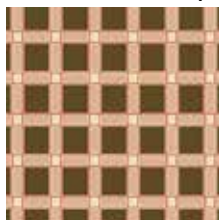
8726-R



8726-N 5/8 yd (binding)



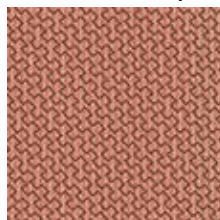
8727-B



8727-NR Fat 1/4 yd



8728-B



8728-R 3/8 yd

FABRIC	5 KITS	10 KITS	20 KITS
8719-NT	1	2	3
FROM EACH	1	1	1
8717-R	8718-RB	8720-N	
8721-B	8722-BE	8723-N	
8724-R	8724-RN	8725-N	
8726-N	8727-NR	8728-R	

BACKING	2	3	6
8722-RY			

Yardage needed for backing:
4 YDS per kit

Bolts needed to cut project kits.
15 yds = 1 bolt

Fabrics shown are 25% of actual size.
Fabrics used in quilt pattern are shown in black.

Maling Road

BY DI FORD-HALL

andover

makower uk
The Hanley Studio