

Chesapeake

DI FORD-HALL



Chesapeake Quilt designed by: **Di Ford-Hall**
Quilt Size: 90" x 90" ■ andoverfabrics.com

andover • makower.uk

Free Pattern Download Available

1384 Broadway New York, NY 10018
Tel. (800) 223-5678 • andoverfabrics.com



9323-L ¼ yd



9323-N



9323-R



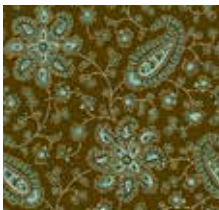
9324-L



9324-N



9324-RN



9325-LG



9325-NE 2¼ yds



9325-RG Fat ¼ yd



9326-LN Fat ¼ yd



9326-NR Fat ¼ yd



9326-RB Fat ¼ yd



9327-L Fat ¼ yd
(extra yds needed
for backing)



9327-NE ⅜ yd



9327-RN ⅜ yd



9328-LN Fat ¼ yd



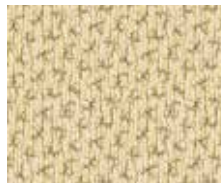
9328-NE Fat ¼ yd



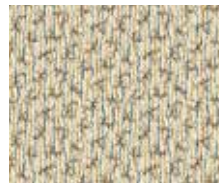
9328-RB Fat ¼ yd



9329-LG



9329-N 2½ yds



9329-RB



9331-L Fat ¼ yd



9331-NE Fat ¼ yd



9331-R ½ yd



9332-LG 2½ yds



9332-NK 1¼ yds
(includes binding)



9332-RB Fat ¼ yd



9333-LG



9333-NR



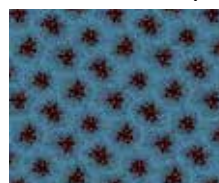
9333-RB



9330-LG Fat ¼ yd



9330-NE Fat ¼ yd



9330-RB Fat ¼ yd



9330-RN Fat ¼ yd

FABRIC	5 KITS	10 KITS	20 KITS
9332-NK	1	1	2
FROM EACH	1	2	4
	9325-NE	9329-N	9332-LG
FROM EACH	1	1	1
	9323-L	9325-RG	9326-LN
	9326-NR	9326-RB	*9327-L
	9327-NE	9327-RN	9328-LN
	9328-NE	9328-RB	9330-LG
	9330-NE	9330-RB	9330-RN
	9331-L	9331-NE	9331-R
	9332-RB		

BACKING

*9327-L	3	6	12
---------	---	---	----

Yardage needed for backing: 8¼ YDS per kit

Bolts needed to cut project kits.

15 yds = 1 bolt

Fabrics shown are 25% of actual size.

Fabrics used in quilt pattern are shown in black