

Hey Sugar

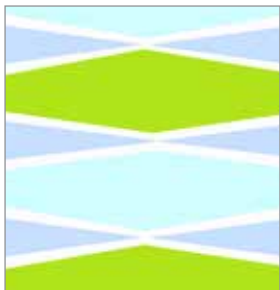
FABRICS BY MO BEDELL



Quilt Design:
Yvette Jones

Quilt Size: **64" x 64"**

andoverfabrics.com



About Hey Sugar

Hey Sugar is a collection I designed to be a little bit sweet and a little bit spicy. There are some nice brights and a good assortment of subdued colors that will work well for quilts and apparel. The large scale floral is meant to be enjoyed as a beautiful whole cloth back of a quilt or fussy cut up into so many different pieces. – *Mo Bedell*

andover

makower uk
The Henley Studio

Free Pattern Download Available

1384 Broadway New York, NY 10018
Tel. (800) 223-5678 • andoverfabrics.com

Quilt finishes 64" x 64"

What are little girls made of? Sugar and spice, and you-know-what! The softly feminine prints are sure to please the recipient, and the easy piecing and appliqué are sure to please the maker.

Cutting Directions

Note: Read assembly directions before cutting patches. All measurements are cut sizes and include $\frac{1}{4}$ " seam allowances. Borders are cut the exact lengths required plus $\frac{1}{4}$ " seam allowances. WOF designates the width of fabric from selvedge to selvedge (approximately 42" wide).

Fabric A

Cut (2) top/bottom borders $1\frac{1}{2}$ " x $64\frac{1}{2}$ ", cut lengthwise
Cut (2) side borders $1\frac{1}{2}$ " x $62\frac{1}{2}$ ", cut lengthwise
Cut (2) top/bottom borders 4" x $61\frac{1}{2}$ ", cut lengthwise
Cut (2) side borders 4" x $54\frac{1}{2}$ ", cut lengthwise
Cut (4) strips $3\frac{1}{2}$ " x $18\frac{1}{2}$ "
Cut (12) strips $3\frac{1}{2}$ " x $15\frac{1}{2}$ "
Cut (4) strips $3\frac{1}{2}$ " x $12\frac{1}{2}$ "
Cut (4) strips $3\frac{1}{2}$ " x $6\frac{1}{2}$ "
Cut (32) squares $3\frac{1}{2}$ "
Cut (1) square $4\frac{3}{4}$ " for center block
Cut (1) small appliqué flower center

Fabric B

Cut (4) strips $3\frac{1}{2}$ " x $36\frac{1}{2}$ "
Cut (4) strips $3\frac{1}{2}$ " x $18\frac{1}{2}$ "
Cut (12) strips $3\frac{1}{2}$ " x $6\frac{1}{2}$ "
Cut (2) squares $3\frac{7}{8}$ " x $3\frac{7}{8}$ ", cut in half diagonally to make 4 half-square triangles for center block (see Step 1)
Cut (8) squares $3\frac{1}{2}$ "

Fabric C

Fussy-cut (2) top/bottom borders 1" x $62\frac{1}{2}$ ", cut crosswise and pieced
Fussy-cut (2) side borders 1" x $61\frac{1}{2}$ ", cut crosswise and pieced
Cut (4) squares $6\frac{1}{2}$ "
Cut (16) squares $3\frac{1}{2}$ "
Cut (4) large appliqué flower centers

Fabric D

Cut (4) strips $3\frac{1}{2}$ " x $30\frac{1}{2}$ "
Cut (8) strips $3\frac{1}{2}$ " x $6\frac{1}{2}$ "

Fabric Requirements

		Yardage	Fabric
Fabric A	setting	$2\frac{3}{4}$ yards	A-T-White Lies
Fabric B	setting	1 yard	7505-B
*Fabric C	setting	$\frac{3}{4}$ yard	6004-BT
Fabric D	setting	$\frac{3}{4}$ yard	7508-CE
Fabric E	appliqué	$\frac{1}{2}$ yard	7502-C
Fabric F	binding	$\frac{5}{8}$ yard	7508-CG
Backing		4 yards	6004-BT

Fabric E

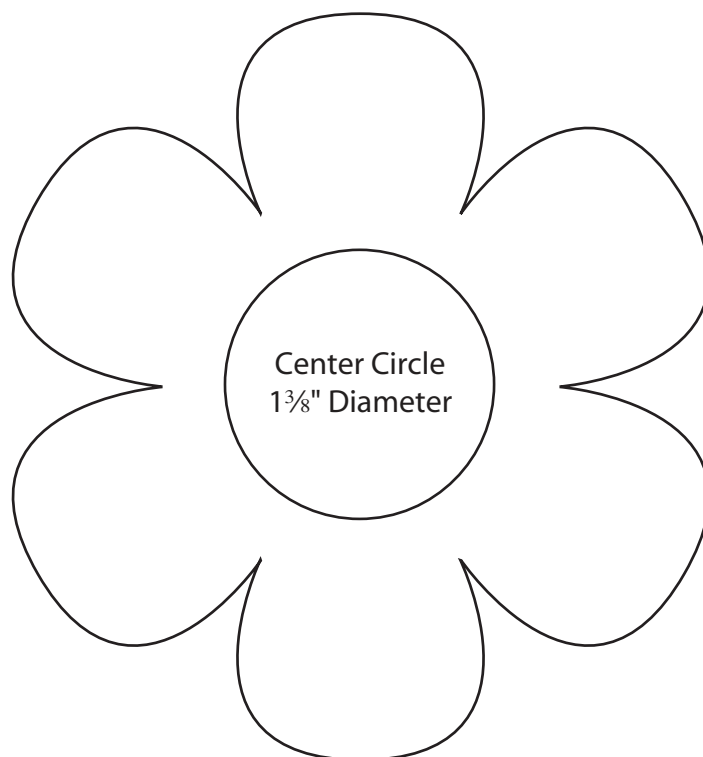
Cut (12) squares $3\frac{1}{2}$ "
Cut (4) large appliqué flowers
Cut (1) small appliqué flower

Fabric F

Cut (7) strips $2\frac{1}{2}$ " x WOF for binding

Backing

Cut (2) panels 36" x 72", pieced to fit quilt top with overlap on all sides



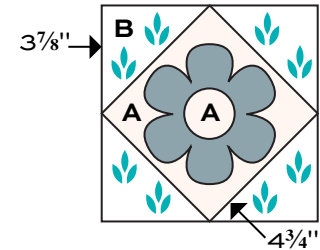
Hey Sugar Quilt

Making the Quilt

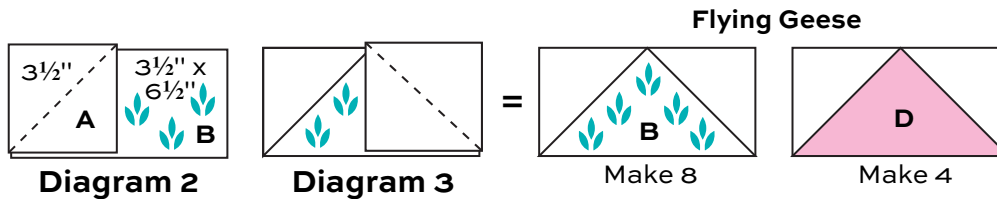
1. Cut the Fabric B $3\frac{7}{8}$ " squares in half diagonally once (Diagram 1). Be sure to cut one of the squares in the opposite direction as shown. Sew Fabric B triangles to sides of the Fabric A $4\frac{3}{4}$ " square, keeping the print upright as shown in the Center Block diagram.
2. Prepare the small Fabric E flower using your favorite method of appliqué. Fuse and/or stitch the flower and the Fabric A center circle to the middle of the Center Block. It should measure $6\frac{1}{2}$ " square.
3. There are several Flying Geese units in the quilt. Draw a diagonal line on the wrong side of 24 Fabric A $3\frac{1}{2}$ " squares. Place a marked square on one end of a Fabric B $3\frac{1}{2}$ " x $6\frac{1}{2}$ " rectangle, right sides together. Sew on the marked line; trim away and discard excess fabric (Diagram 2). Press open. Repeat this process on the opposite end of the rectangle to make a Flying Geese unit (Diagram 3). Make 8 units like this. Make 4 Flying Geese units using Fabric D rectangles and Fabric A squares.



Diagram 1



Center Block – Make 1



4. Refer to the Quilt Assembly Diagram for the following steps. There are 11 borders or “rounds” that are sewn in order to the center block. For each round, piece the squares, strips, and Flying Geese units as required. Be sure to take accurate seam allowances so all the pieced borders fit together. Press seam allowances in opposite directions in every other round so the seam allowances butt together between rounds. Sew the side borders on first, and then add the top and bottom borders. As each border is added, press the seam allowances away from the center.

Follow this chart to make each border, sewing on each round once it is constructed.

- Border 1:** Fabric A $3\frac{1}{2}$ " squares + Fabric D $3\frac{1}{2}$ " x $6\frac{1}{2}$ " strips
- Border 2:** Fabrics B and C $3\frac{1}{2}$ " squares + Fabric B $3\frac{1}{2}$ " x $6\frac{1}{2}$ " strips
- Border 3:** Fabrics A and E $3\frac{1}{2}$ " squares + Fabric A $3\frac{1}{2}$ " x $12\frac{1}{2}$ " strips
- Border 4:** Fabrics B and C $3\frac{1}{2}$ " squares + Fabric B $3\frac{1}{2}$ " x $18\frac{1}{2}$ " strips
- Border 5:** Fabric E $3\frac{1}{2}$ " squares + Fabric D $3\frac{1}{2}$ " x $30\frac{1}{2}$ " strips
- Border 6:** Fabric A $3\frac{1}{2}$ " x $15\frac{1}{2}$ " strips + A/D Flying Geese units
- Border 7:** Fabric B $3\frac{1}{2}$ " x $36\frac{1}{2}$ " strips

Hint: Sew pieced Border 6 and Border 7 strips edge to edge, and then add Fabric C $6\frac{1}{2}$ " squares to ends of 2 of the joined borders.

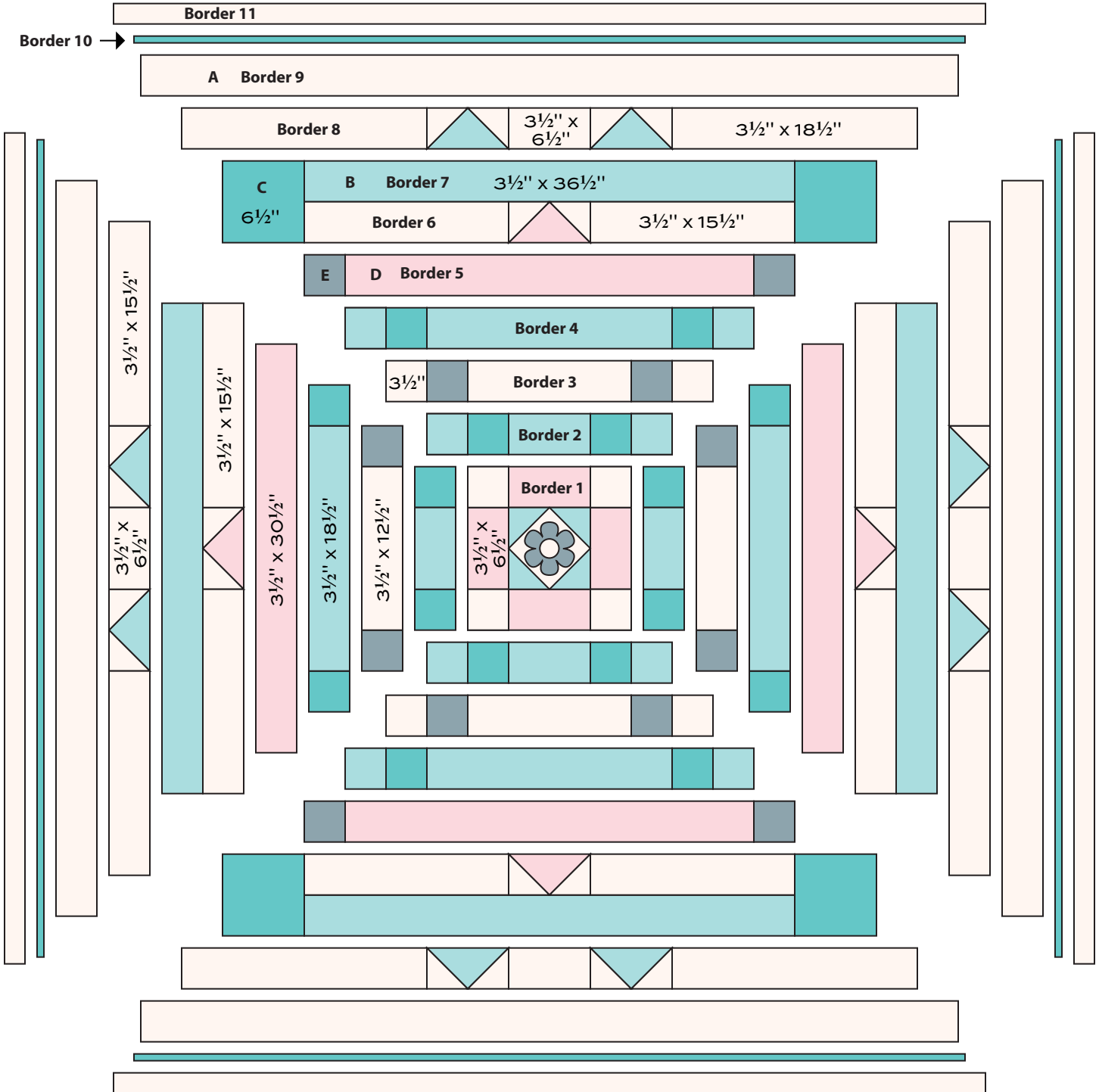
- Border 8** side borders: Fabric A $3\frac{1}{2}$ " x $15\frac{1}{2}$ " strips + $3\frac{1}{2}$ " x $6\frac{1}{2}$ " strips + A/B Flying Geese units
- Border 8** top/bottom borders: Fabric A $3\frac{1}{2}$ " x $18\frac{1}{2}$ " strips + $3\frac{1}{2}$ " x $6\frac{1}{2}$ " strips + A/B Flying Geese units
- Border 9:** Fabric A 4 " x $54\frac{1}{2}$ " strips + 4 " x $61\frac{1}{2}$ " strips
- Border 10:** Fabric C 1 " x $61\frac{1}{2}$ " strips + 1 " x $62\frac{1}{2}$ " strips
- Border 11:** Fabric A $1\frac{1}{2}$ " x $62\frac{1}{2}$ " strips + $1\frac{1}{2}$ " x $64\frac{1}{2}$ " strips

5. Referring to the quilt photograph for placement, fuse and/or stitch the Fabric E large appliqué flowers and Fabric C flower centers to each Border 4. The flowers extend into the adjacent borders.

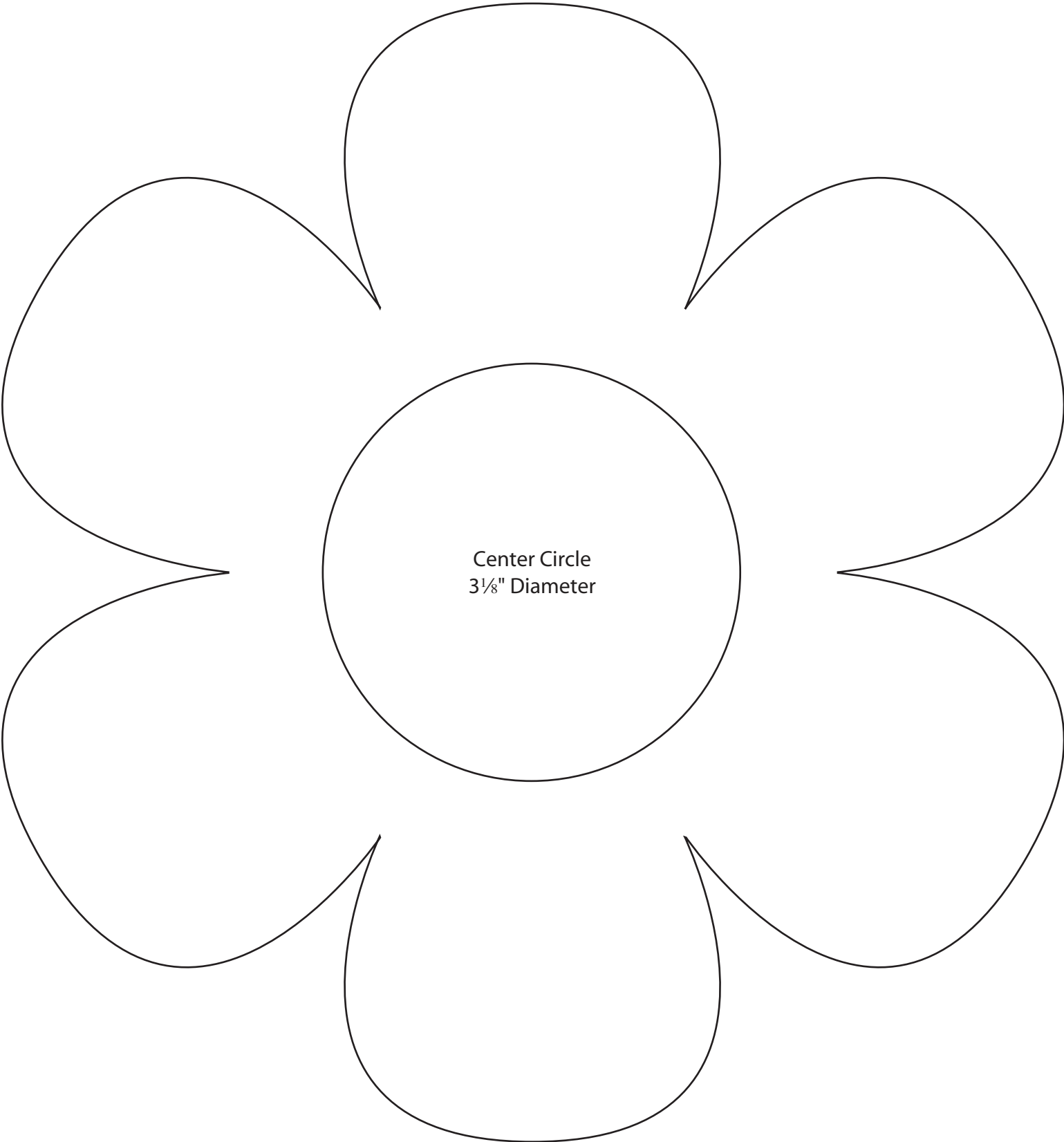
Hey Sugar Quilt

Finishing the Quilt

6. Layer the quilt with batting and backing and baste. Quilt in the ditch around borders and patches. Quilt around the appliqué flowers. Bind to finish the quilt.



Quilt Assembly Diagram



Hey Sugar

FABRICS BY MO BEDELL



7502-B



7503-B



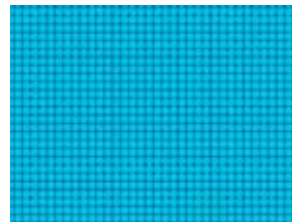
7504-B



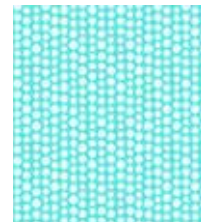
7505-B*



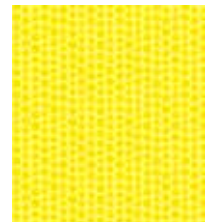
7506-B



7508-B



6004-BT*



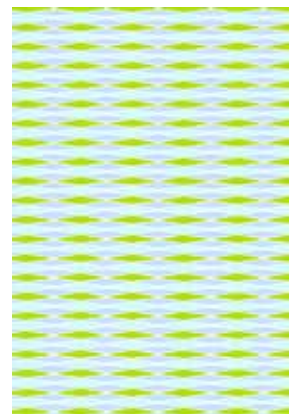
6004-BY



7502-C*



7503-CE



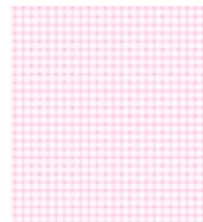
7504-CT



7505-CT



7506-CB



7508-CE*



7508-CG*



6004-CE



A-T-White Lies*

*Indicates fabrics used in quilt pattern. Fabrics shown are 10% of actual size.

andover

makower uk
The Henley Studio

Free Pattern Download Available

1384 Broadway New York, NY 10018
Tel. (800) 223-5678 • andoverfabrics.com

11/22/13