



# *Annandale*

*Fabrics by Jo Morton*



**makower uk**

1384 Broadway  
New York, NY 10018  
(800) 223-5678

[www.andoverfabrics.com](http://www.andoverfabrics.com)

Quilt designed by Candy Hargrove  
Machine quilted by Maggi Honeyman  
Finished size: 78" x 78"

Revised 2/18/11

# Annandale Quilt

Using *Annandale*, *Toast II*, *Ravenwood*, and *Attic Shirtings* by Jo Morton for Andover Fabrics  
Quilt designed and made by Candy Hargrove – Quilt machine quilted by Maggi Honeyman

If you love patchwork, you'll adore Annadale. Cut the patches for each set of blocks in advance to take best advantage of the quick, accurate piecing methods for the Flying Geese and half-square triangles. Annandale is scrappy, but the fabric placement is controlled. Pay careful attention to the cutting instructions to duplicate this earth-toned beauty.

Quilt finishes 78" x 78"  
4 Dutchman's Puzzle blocks 6" x 6"  
36 Churn Dash blocks 6" x 6"  
112 Flying Geese border blocks 2" x 4"

## Fabric Requirements and Cutting

**Note:** Border measurements are given in the exact lengths required, including ¼" seam allowances. WOF designates the width of fabric from selvedge to selvedge (approximately 42" wide). A fat eighth is a 9" x 21" cut of fabric.

	<b>Yardage</b>	
<b>5091-K</b>	2 <sup>5</sup> / <sub>8</sub>	For the binding, cut 9 strips 2½" x WOF From the length of the fabric cut (4) outer border strips 6½" x 66½"
<b>5094-K</b>	1	Cut (8) strips 2½" x WOF. Cut these into: For the center medallion, (4) 6½" strips (2) 14½" strips, (2) 18½" strips For the inner border, piece the remaining strips and cut into (4) 54½" strips
<b>5088-K</b>	5/8	For alternating squares, cut (18) squares 6½" x 6½"
<b>5089-K</b>	1¼	For alternating squares, cut (18) squares 6½" x 6½", centering each square on the floral stripe
<b>5095-R</b>	½	For the Dutchman's Puzzle Blocks, cut (16) rectangles 2" x 3½" For the center medallion and inner border cornerstones cut (5) squares 2½" x 2½" For the Flying Geese border, cut (4) rectangles 2½" x 4½" and (4) squares 4½" x 4½" For the outer border cornerstones cut (4) squares 6½" x 6½"
<b>5090-K</b>	½	For the Dutchman's Puzzle Blocks, cut (16) rectangles 2" x 3½"
<b>Fat ⅛ each (lights):</b>		<b>Annandale:</b> <b>Toast II:</b> <b>Attic Shirtings:</b> <b>5092-Y</b> <b>5093-Y</b> <b>4233-LN</b> <b>5082-N</b> <b>5082-K</b> <b>5095-N</b> <b>4233-L</b> <b>5083-N</b> <b>5096-L</b> <b>5096-N</b> <b>4241-YN</b> <b>5084-K</b> <b>5084-N</b> <b>4245-LC</b> <b>5086-K</b> <b>5087-K</b>

### From these light fabrics cut:

For the Dutchman's Puzzle blocks: (64) squares 2" x 2" in sets of 4 matching squares  
For the Churn Dash blocks, (18) squares 3⅜" x 3⅜" and (144) rectangles 1½" x 1¾". For each block, cut 2 squares and 4 rectangles from the same fabric.  
For the Flying Geese border blocks, cut (224) squares 2½" x 2½" in matching pairs

<b>½ yard each (darks):</b>	<b>Annandale:</b>	<b>Ravenwood:</b>
	<b>5093-RN</b>	<b>2474-K</b>
	<b>5091-K</b>	<b>3997-K</b>
		<b>4880-K</b>

From the dark fabrics plus remaining **5094-K**, **5095-R** and **5090-K** cut:

For the Churn Dash blocks, (18) squares 3⅜" x 3⅜", (144) rectangles 1½" x 1¾", and (32) squares 1½" x 1½". For each block, cut 2 large squares, 1 small square, and 4 rectangles from the same fabric.

For the Flying Geese border blocks, (112) rectangles 2½" x 4½"

**Backing**                      4<sup>7</sup>/<sub>8</sub>                      **5092-Y** (yardage needed for backing ; 4<sup>7</sup>/<sub>8</sub> yards or two 82" x WOF lengths per quilt)

## Make the Center Medallion

1. Referring to diagram 1, align a light 2" x 2" square right sides together with the end of a 2" x 3½" 5090-K rectangle. Draw a line on the square from corner to corner as shown. Stitch on the drawn line and trim excess fabric, leaving ¼" seam allowance. Press the triangle open. Repeat with a matching square for the other end of the rectangle. Make another like this using the same light fabrics. Make 8 matching pairs of Flying Geese like this with a variety of light fabrics and 8 matching pairs of Flying Geese using 2" x 3½" 5095-R rectangles.
2. Referring to diagram 2 for the Dutchman's Puzzle/central medallion, join pairs of Flying Geese into sets and sets into a Dutchman's Puzzle block, paying careful attention to the orientation of the geese. Make 4 Dutchman's Puzzle blocks.
3. Sew a 6½" 5094-K strip between 2 blocks to make a block row. Repeat. Sew a 5095-R 2½" x 2½" square between the remaining 6½" 5094-K strips to make a sash row. Referring to the diagram and matching centers, ends, and seams, sew the sash row between the block rows.
4. Matching centers and ends, sew the 14½" 5094-K strips to the sides of the medallion and the 18½" strips to the top and bottom of the medallion.

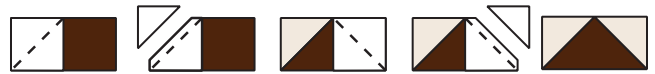


Diagram 1

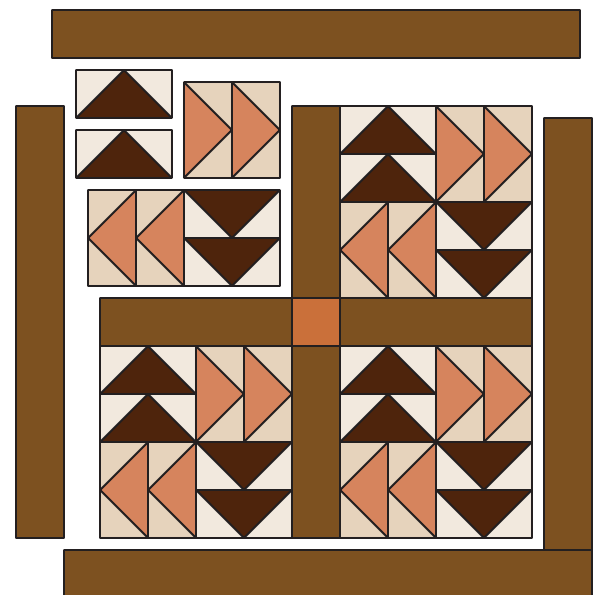


Diagram 2

## Make the Churn Dash blocks:

5. For each block, choose (2) 3¾" x 3¾" squares and (4) 1½" x 1¾" rectangles each from a light fabric and a dark fabric. Choose a matching dark 1½" x 1½" square.
6. Referring to diagram 3, layer a 3¾" x 3¾" light square right sides together with the same size dark square. Draw a diagonal line from corner to corner on the back of the light square. Sew ¼" away from the drawn line on both sides. Cut on the line to make 2 half-square triangle units. Press the units open. Repeat with the remaining pair of squares.
7. Referring to diagram 4 for the Churn Dash piecing, arrange the half-square triangle units and patches as shown. Join the units and patches to make a block. Make 36 Churn Dash blocks.

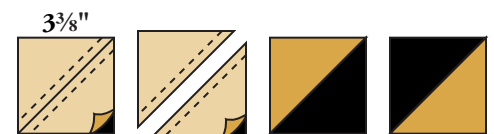


Diagram 3

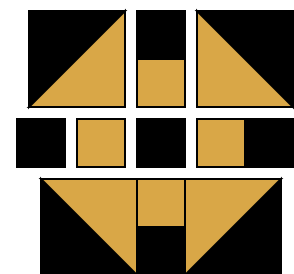


Diagram 4

## Assemble the Quilt

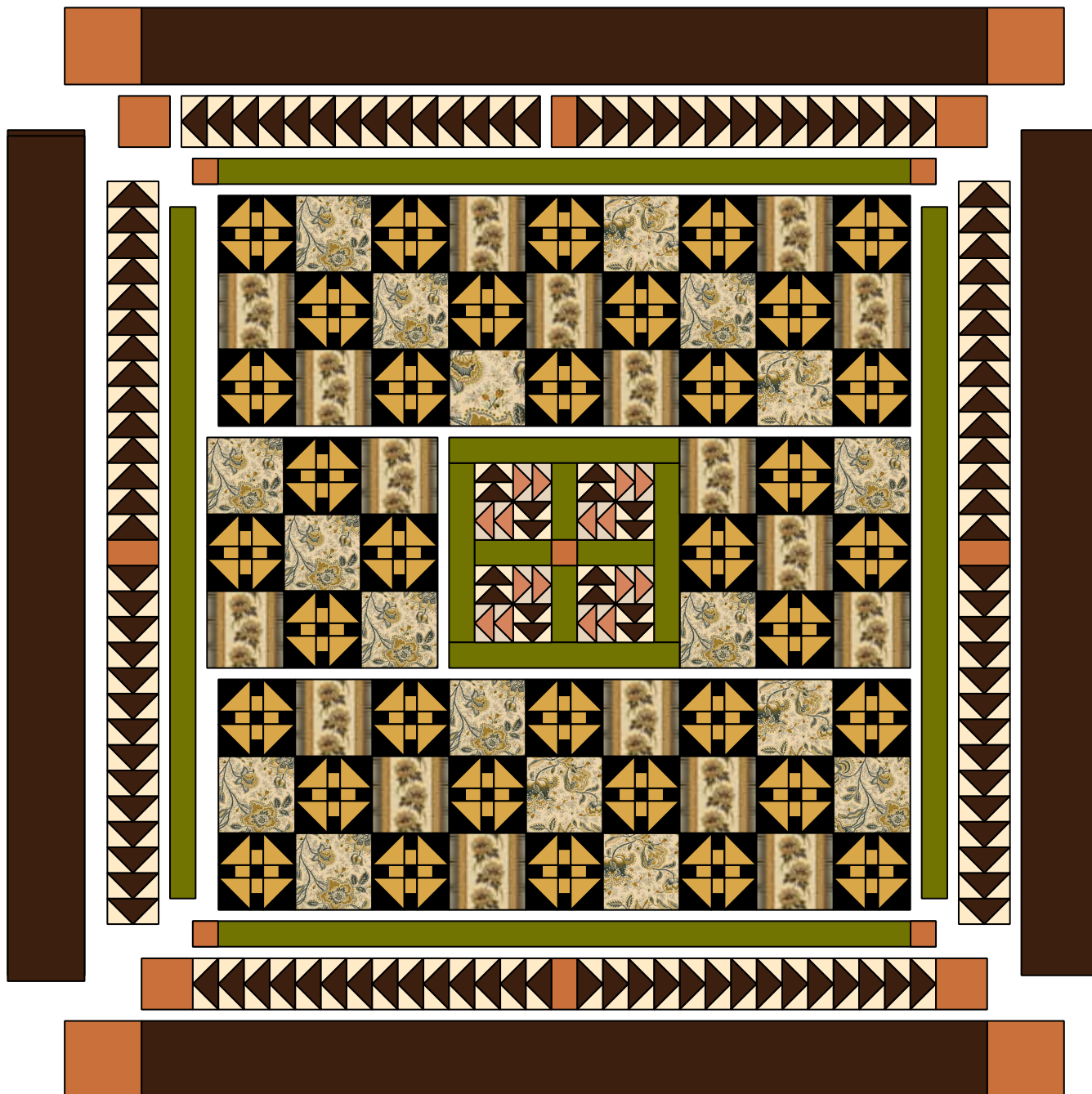
8. Referring to the quilt assembly, arrange the Churn Dash blocks, alternating 6½" x 6½" squares from 5088-K and 5089-K, and central medallion as shown on a design wall or flat surface. Join the top three rows of blocks into rows. Matching centers, ends, and seams, join the rows.
9. Join the blocks to the left of the center medallion into rows and then into a unit. Repeat for the blocks to the right of the medallion. Join the units to the sides of the center medallion.
10. Join the remaining blocks into rows and join the rows. Sew the three sections together.
11. Add the borders: Matching centers and ends, sew a 2½" x 54½" strip from fabric 5094-K to each side of the quilt. Sew a 2½" x 2½" square from 5095-R to each end of the remaining strips. Matching centers, ends, and side seams, sew these borders to the top and bottom of the quilt.
12. Make the Flying Geese border blocks. Referring to the instructions in step 1, make a block using a dark 2½" x 4½" rectangle and (2) matching light 2½" x 2½" squares. Make 112 Flying Geese border blocks.

# Annandale Quilt

- Referring to the quilt assembly, arrange (14) Flying Geese, (1)  $2\frac{1}{2}$ " x  $4\frac{1}{2}$ " 5095-R rectangle, and (14) Flying Geese as shown to make a border strip, paying careful attention to the orientation of the geese. Join the blocks. Make 4 border strips like this.
- Matching centers and ends, sew a border strip to each side of the quilt. Sew a  $4\frac{1}{2}$ " x  $4\frac{1}{2}$ " square from 5095-R to each end of the remaining strips. Matching centers, ends, and side seams, sew these borders to the top and bottom of the quilt.
- Matching centers and ends, sew a  $6\frac{1}{2}$ " x  $66\frac{1}{2}$ " strip from fabric 5091-K to each side of the quilt. Sew a  $6\frac{1}{2}$ " x  $6\frac{1}{2}$ " square from 5095-R to each end of the remaining strips. Matching centers, ends, and side seams, sew these borders to the top and bottom of the quilt. Press the quilt top.

## Finishing

- Layer the quilt top with batting and backing. Quilt in the ditch of seams and as desired. Bind to finish the quilt.



Quilt Diagram



**makower uk**

1384 Broadway, New York, NY 10018  
(800) 223-5678 • [www.andoverfabrics.com](http://www.andoverfabrics.com)

# Annandale

by Jo Morton

\*Indicates fabrics used in the quilt pattern.  
Fabrics shown are 20% of actual size.



5088-K\*



5089-K\*



5088-R



5089-G



5088-E



5089-E



5090-K\*



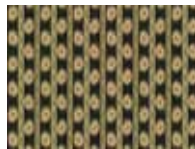
5091-K\*



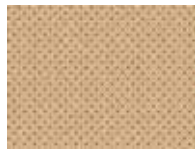
5094-K\*



5090-R



5093-K



5095-N\*



5090-N



5093-N



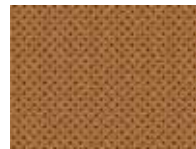
5096-E



5092-Y\*



5093-RN\*



5095-R\*



5091-G



5093-R



5096-L\*



5091-N



5094-E



5096-E



5092-N



5093-Y\*



5096-N\*



5092-G



5094-G



5096-L\*



5092-E



5095-E



5096-E

Also by  
**Jo Morton**

## Attic Shirtings



5082-K\*



5082-N\*



5083-N\*



5084-K\*



5084-N\*



5086-K\*



5087-K\*

## Toast II



4233-L\*



4233-LN\*



4241-YN\*



4245-LC\*

## Ravenwood



2474-K\*



3997-K\*



4880-K\*

Free Pattern Download  
Available at  
[www.andoverfabrics.com](http://www.andoverfabrics.com)

Revised 2/18/11