

Introducing Andover Fabrics new collection:
AlphaBuddies fabrics by Nancy Davis-Murty

Alpha Buddies



AlphaBuddies fabrics by Nancy Davis-Murty
Quilt designed by Nancy Davis-Murty
Quilt sewn by Mary Weiser
Machine quilted by Nancy Davis-Murty
Finished size: 52" x 62"



makower uk

1384 Broadway • New York, NY 10018 • (800) 223-5678

www.andoverfabrics.com

- Free Pattern Download Available -

AlphaBuddies

Introducing Andover Fabrics new collection: AlphaBuddies by Nancy Davis-Murty

Quilt designed by Nancy Davis-Murty, sewn by Mary Weiser, and machine quilted by Nancy Davis-Murty

Planning

An illustrated alphabet in a quilt...what fun! Sleeping under this quilt is bound to make any small child happy, and with such a variety of colors, there's even more learning going on! Really delightful to make, this quilt goes together quickly and easily.

You may wish to press fabrics with spray starch prior to cutting. This will make the bias edges of the triangles easier to handle.

Quilt finishes approx. 52" x 62"
32 Broken Sash Blocks 7" x 7"

Fabric Requirements & Cutting Directions

Do not wash fabric prior to making quilt!

Note: A fat eighth is a 9" by 21-22" cut of fabric. Border strips are cut long and then trimmed.

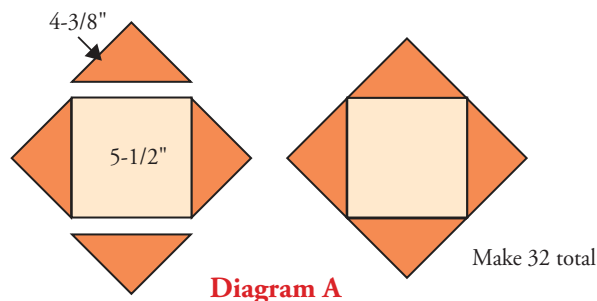
- 3961-M** 2/3 yard (4 full rows of squares) **Animal Square Print (block centers)**
Cut (28) 5-1/2" squares (squares are fussy-cut so that squares are equidistant from brown lines)
- 3962-P** 1 fat eighth* **Purple Animal Scatter Print (block centers)**
Cut (2) 5-1/2" squares
- 3962-R** 1 fat eighth **Red Animal Scatter Print (block centers)**
Cut (2) 5-1/2" squares
- 3333-RP** 1 fat eighth **Red/Purple Confetti Print (block corners)**
Cut (4) 4-3/8" squares, cut in half diagonally to make 8 half-square triangles
- 3333-T2** 1 fat eighth **Turquoise Confetti Print (block corners)**
Cut (4) 4-3/8" squares, cut in half diagonally to make 8 half-square triangles
- 3962-B** 1 fat eighth **Blue Animal Scatter Print (block corners)**
Cut (4) 4-3/8" squares, cut in half diagonally to make 8 half-square triangles
- 3963-G** 1 fat eighth **Green Letter Print (block corners)**
Cut (4) 4-3/8" squares, cut in half diagonally to make 8 half-square triangles
- 3963-O** 1 fat eighth **Orange Letter Print (block corners)**
Cut (4) 4-3/8" squares, cut in half diagonally to make 8 half-square triangles
- 3963-R** 1 fat eighth **Red Letter Print (block corners)**
Cut (4) 4-3/8" squares, cut in half diagonally to make 8 half-square triangles
- 3964-P** 1 fat eighth **Purple Bubble Print (block corners)**
Cut (4) 4-3/8" squares, cut in half diagonally to make 8 half-square triangles
- 3964-Y** 1 fat eighth **Yellow Bubble Print (block corners)**
Cut (4) 4-3/8" squares, cut in half diagonally to make 8 half-square triangles
- 3965-B** 1 fat eighth **Blue Diamond Print (block corners)**
Cut (4) 4-3/8" squares, cut in half diagonally to make 8 half-square triangles

Fabric Requirements & Cutting Directions *continued*

- 3965-O 1 fat eighth Orange Diamond Print (block corners)**
Cut (4) 4-3/8" squares, cut in half diagonally to make 8 half-square triangles
- 3965-P 1 fat eighth Purple Diamond Print (block corners)**
Cut (4) 4-3/8" squares, cut in half diagonally to make 8 half-square triangles
- 3967-B 1 fat eighth Blue Woven Dot Print (block corners)**
Cut (4) 4-3/8" squares, cut in half diagonally to make 8 half-square triangles
- 3967-E 1 fat eighth Coral Woven Dot Print (block corners)**
Cut (4) 4-3/8" squares, cut in half diagonally to make 8 half-square triangles
- 3967-G 1 fat eighth Green Woven Dot Print (block corners)**
Cut (4) 4-3/8" squares, cut in half diagonally to make 8 half-square triangles
- 3967-T 1 fat eighth Turquoise Woven Dot Print (block corners)**
Cut (4) 4-3/8" squares, cut in half diagonally to make 8 half-square triangles
- 3967-Y 1 fat eighth Yellow Woven Dot Print (block corners)**
Cut (4) 4-3/8" squares, cut in half diagonally to make 8 half-square triangles
- 3964-G 3/4 yard Green Bubble Print (setting triangles)**
Cut (4) 11-3/4" squares, cut in half twice diagonally to make 16 quarter-square triangles (2 left over)
Cut (2) 6-1/4" squares, cut in half diagonally to make 4 half-square triangles
- 3964-K 5/8 yard Black Bubble Print (inner border)**
Cut (2) 2-1/2" x 54" strips, pieced from 3 width of fabric strips
Cut (2) 2-1/2" x 48" strips, pieced from 3 width of fabric strips
- 3963-T 7/8 yard* Turquoise Letter Print (outer border)**
Cut (4) 4-1/2" x 58" strips, pieced from 6 width of fabric strips
- *Additional yardage needed for binding or backing (see below).*
- 3962-P 3-1/2 yards Purple Animal Scatter Print (backing)**
Cut and piece to fit quilt top with 4" overlap on all sides.
- 3963-T 5/8 yard Turquoise Letter Print (binding)**
Cut (6) 2-1/2" x width of fabric strips

Piecing the Blocks

1. Referring to Diagram A, stitch 4 matching 4-3/8" half-square triangles to sides of assorted 5-1/2" squares to make Broken Sash Block. Make 32 total.



Assembling the Quilt

2. Referring to Quilt Diagram, use two 11-3/4" quarter-square triangles and 1 Broken Sash Block to make first diagonal row. In similar manner, use 11-3/4" quarter-square triangles and remaining blocks to piece 7 additional diagonal rows.

3. Sew rows together as shown. Stitch 6-1/4" half-square triangles to corners. Trim as needed.

4. Stitch black bubble 54" strips to sides; trim even with top and bottom. Sew remaining black bubble strips to top/bottom; trim even with sides. Stitch 58" turquoise letter print strips to sides; trim even with top and bottom. Sew remaining turquoise letter print strips to top and bottom; trim even with sides.

Finishing the Quilt

5. Layer quilt with batting and 3962-P purple animal scatter print backing. Quilt as desired. Bind with 3963-T turquoise letter print to finish the quilt.



Quilt Diagram

AlphaBuddies

by Nancy Davis-Murty



3961-M*



3962-B

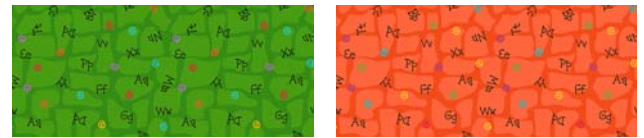
3962-P*

3962-R*



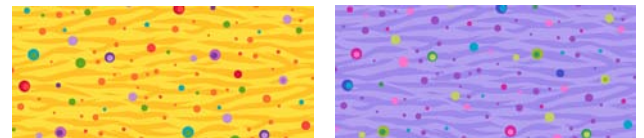
3963-T*

3963-K*



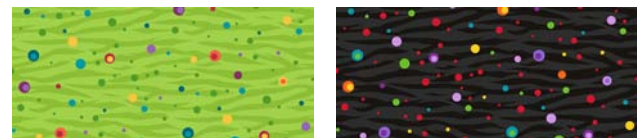
3963-G*

3963-O*



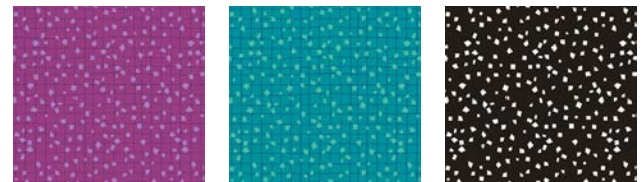
3964-Y*

3964-P*



3964-G*

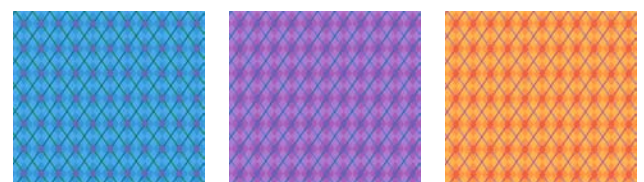
3964-K*



3333-RP*

3333-T2*

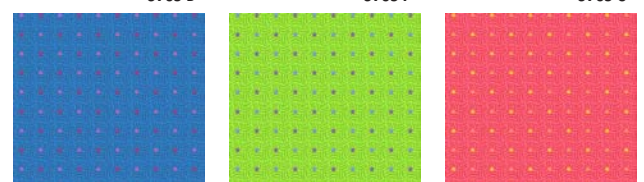
3333-K



3965-B*

3965-P*

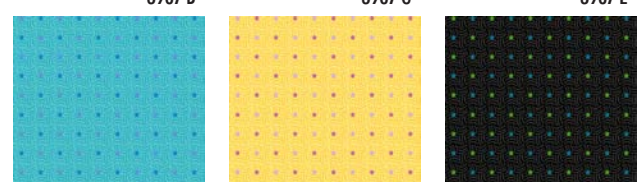
3965-O*



3967-B*

3967-G*

3967-E*



3967-T*

3967-Y*

3967-K*

*Indicates fabric used in quilt pattern. Fabrics shown are 20% of actual size.

Free Pattern Download Available at
www.andoverfabrics.com