

# Savannah

FABRICS BY JO MORTON



Savannah Homecoming Quilt  
Design by: **Candy Hargrove**

Machine Quilted by:  
**Maggi Honeyman**

Quilt Size: **67½" x 79½"**

[andoverfabrics.com](http://andoverfabrics.com)



## About Savannah

I was on the lookout for a 'mother' floral that had the feel of the large floral in 'Annandale' (2010). I was so happy to find this beautiful floral and add appropriate companions. Determined this group should be blue/brown for fresh appeal. — *Jo Morton*

andover

makower uk  
*The Henley Studio*

Free Pattern Download Available

1384 Broadway New York, NY 10018

Tel. (800) 223-5678 • [andoverfabrics.com](http://andoverfabrics.com)





7158-B 2 yds



7158-N



7159-B Fat ¼ yd



7159-N



7160-BK Fat ¼ yd



7160-N



7161-BN ⅝ yd  
(includes binding)



7161-NO 1 yd



7161-NR



7162-BL Fat ¼ yd



7162-NL Fat ¼ yd



7163-BK



7163-N



7164-B Fat ¼ yd



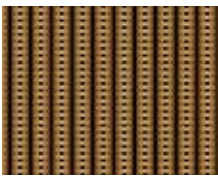
7164-BN Fat ¼ yd



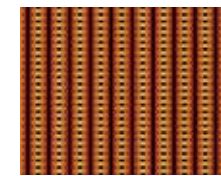
7164-NR



7164-NO



7165-BN Fat ¼ yd



7165-NR Fat ¼ yd



7166-BL Fat 1¼ yd



7166-BN Fat ¼ yd



7166-BY



7166-NL Fat ¼ yd



7166-NR



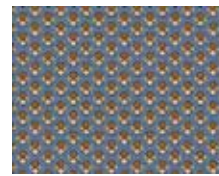
7167-BL Fat ¼ yd



7167-NL Fat ¼ yd  
(extra yds needed  
for backing)



7168-NK



7168-B 1 yd



7168-BK Fat ¼ yd

FABRICS 10 KITS 20 KITS 30 KITS

7158-B 2 3 4

7161-BN 1 1 2

7161-NO 1 2 2

7168-B 1 2 2

FROM EACH 1 1 1

7159-B 7160-BK 7162-BL 7162-NL

7164-B 7164-BN 7165-BN 7165-NR

7166-BL 7166-BN 7166-NL 7167-BL

7167-NL\* 7168-BK

BACKING FABRIC

\*7167-NL 4 7 10

YARDAGE FOR BACKING:  
5 YDS PER KIT

Fabrics shown are 30% of actual size.  
Fabrics used in quilt pattern are shown  
in black.

# Savannah

FABRICS BY JO MORTON

andover

makower uk  
*The Henley Studio*