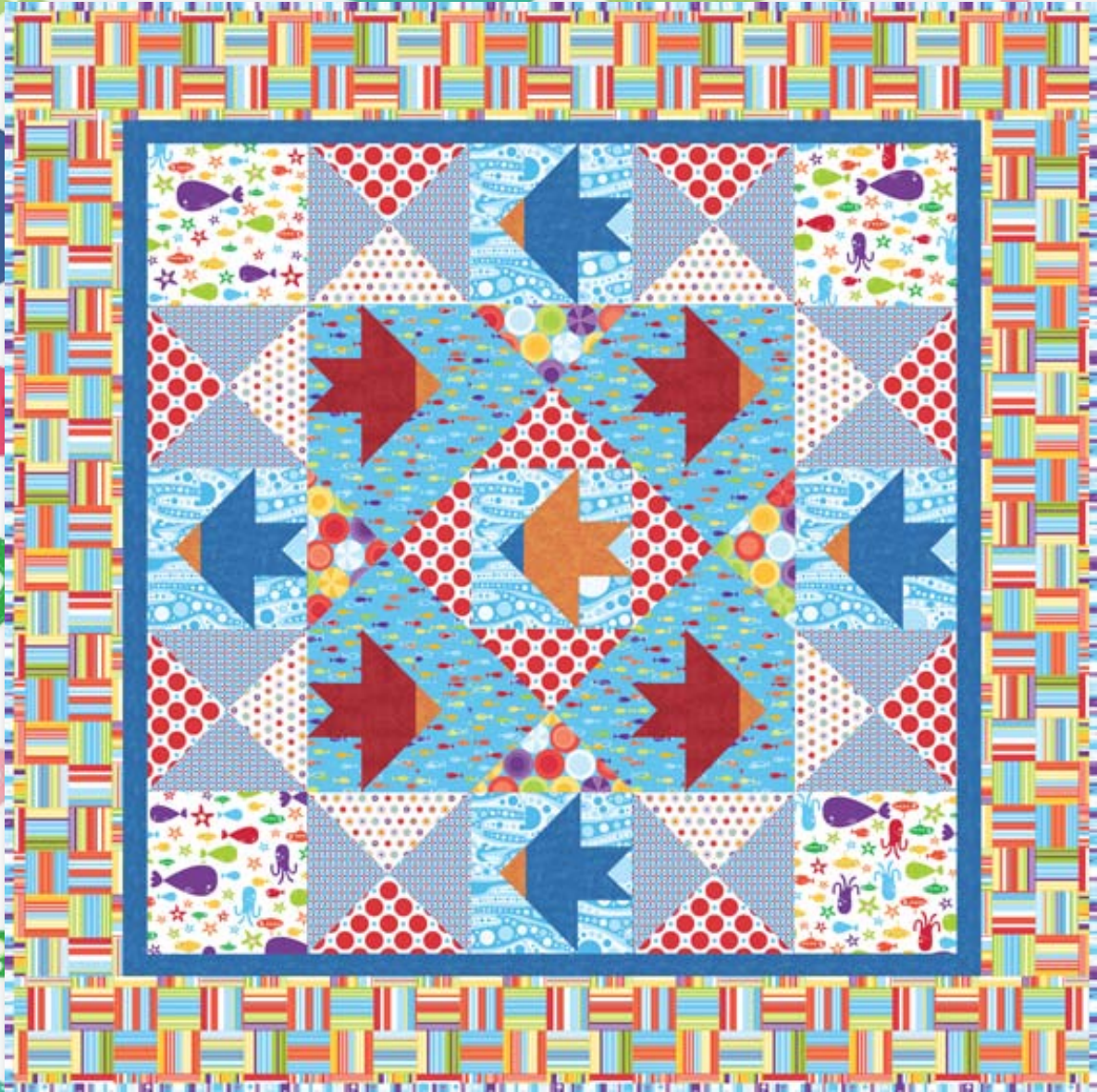


Snorkel Quilt



Finished size: 60" x 60"

*Introducing
Andover Fabrics new collection:*

Snorkel

Fabrics by Cosmo Cricket™
Quilt designed by Gail Kessler



makower uk®

1384 Broadway • New York, NY 10018 • (800) 223-5678
www.andoverfabrics.com

Snorkel Quilt

Introducing Andover Fabrics new collection: Snorkel by Cosmo Cricket™

Quilt designed by Gail Kessler

Planning

One fish, two fish, red fish, blue fish. This delightful wall quilt is sure to please the child in anyone. The bright novelty prints are fun to fussy cut to make your quilt extra special. Simple piecing will have your fishies swimming along in no time at all.

Quilt finishes 60" x 60"
8 Block A: 9" x 9"
2 Block B: 9" x 9"
2 Block C: 9" x 9"
4 Blue Fish: 9" x 9"
4 Red Fish: 9" x 9"
1 Orange Fish: 9" x 9"

Fabric Requirements and Cutting Directions

Note: A fat ¼th is an 18" x 20"-22" cut. Borders are cut the exact lengths required plus ¼" seam allowances. WOF designates the width of fabric from selvage to selvage (approximately 42" wide).

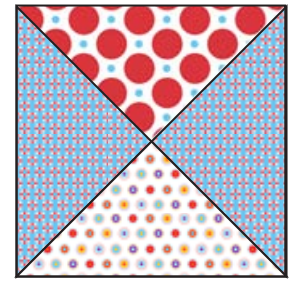
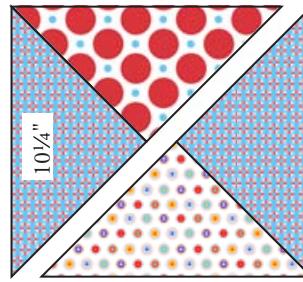
- 4304-P** ⅜ yard **Purple Whales (corner squares)**
Cut (4) 9½" squares
- 4305-B** ⅝ yard **Little Fishies on Blue (red fish background, block B, block C)**
Cut (2) 10¼" squares, cut in half twice diagonally to make 8 quarter-square triangles
Cut (2) 6⅞" squares, cut in half diagonally to make 4 half-square triangles
Cut (2) 4¼" squares, cut in half twice diagonally to make 8 quarter-square triangles
Cut (2) 3⅞" squares, cut in half diagonally to make 4 half-square triangles
Cut (12) 3½" squares
- 4306-B** fat ¼ yard **Pinwheel Circles (block B, block C)**
Cut (1) 10¼" square, cut in half twice diagonally to make 4 quarter-square triangles
- 4307-B** 1¾ yards **Blue Rail Fence Stripe (outer border)**
Cut (2) 6½" x 60" borders, cut lengthwise
Cut (2) 6½" x 48" borders, cut lengthwise
- 4308-B** ½ yard **Blue Bubbles and Waves (blue fish and gold fish background)**
Cut (3) 6⅞" squares, cut in half diagonally to make 6 half-square triangles (1 not needed)
Cut (3) 4¼" squares, cut in half twice diagonally to make 12 quarter-square triangles (2 not needed)
Cut (3) 3⅞" squares, cut in half diagonally to make 6 half-square triangles (1 not needed)
Cut (15) 3½" squares
- 4310-B** ⅜ yard **Little Multi Circles (block A)**
Cut (2) 10¼" squares, cut in half twice diagonally to make 8 quarter-square triangles

- 4311-R** ⅜ yard **Big Red Dots (block A, block B, block C)**
Cut (3) 10¼" squares, cut in half twice diagonally to make 12 quarter-square triangles
- 4312-B** ⅜ yard **Blue with Red Crosses (block A)**
Cut (4) 10¼" squares, cut in half twice diagonally to make 16 quarter-square triangles
- 1867-R8** fat ¼ yard **Red Dimples (red fish)**
Cut (1) 4¼" square, cut in half twice diagonally to make 4 quarter-square triangles
Cut (6) 3⅞" squares, cut in half diagonally to make 12 half-square triangles
Cut (4) 3½" squares
- 1867-W** ½ yard **Blue Dimples (inner border, blue fish, gold fish mouth)**
Cut (5) 1¾" x wof strips, pieced together as needed to make (2) 48" borders and (2) 45½" borders
Cut (2) 4¼" squares, cut in half twice diagonally to make 8 quarter-square triangles (3 not needed)
Cut (6) 3⅞" squares, cut in half diagonally to make 12 half-square triangles
Cut (4) 3½" squares
- 1867-Y12** fat ¼ yard **Goldfish Yellow Dimples (gold fish, blue/red fish mouths)**
Cut (3) 4¼" squares, cut in half twice diagonally to make 12 quarter-square triangles (3 not needed)
Cut (2) 3⅞" squares, cut in half diagonally to make 4 half-square triangles (1 not needed)
Cut (1) 3½" square
- 4304-P** 4 yards **Purple Whales (backing)**
Cut and piece to fit quilt top with 4" overlap on all sides.
- 4309-P** ⅝ yard **Purple Stripe (binding)**
Cut (7) strips 2½" x wof

Snorkel Quilt

Making and Assembling the Quilt

1. Referring to Block A Diagram, join 1 big red dot print $10\frac{1}{4}$ " half-square triangle, 1 little multi circles print triangle, and 2 blue with red crosses triangles to make a block A. Make 8.



Block A **Make 8**

2. Referring to Diagram 1, cut $10\frac{1}{4}$ " little fishies print squares in half diagonally twice to make 4 quarter-square triangles.

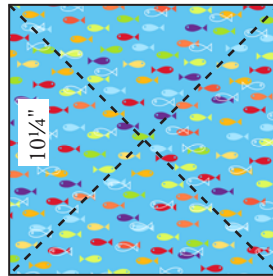
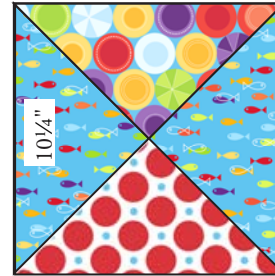
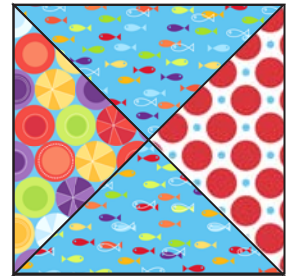


Diagram 1



Block B **Make 2**



Block C **Make 2**

Note the position of the print in the triangles. Referring to Block B Diagram, join 1 big red dot $10\frac{1}{4}$ " triangle, 1 pinwheel circles triangle, and 2 fishies print triangles with the fish print perpendicular to long edge of triangles. Make 2 block B.

3. Likewise, join 4 patches as in step 2, using 2 triangles with the fishies print parallel to long edge of triangles. Make 2 Block C.

4. Referring to the Blue Fish Diagram and Diagram 2, cut blue bubbles and waves print patches as shown, noting the direction of the diagonal cuts. Join blue bubbles background patches, blue dimples patches, and 1 gold dimples triangle to make a blue fish. Be sure that all the waves are oriented horizontally within the block. Make 4. Make 1 gold fish block in the same way, using a blue dimples triangle for the mouth.

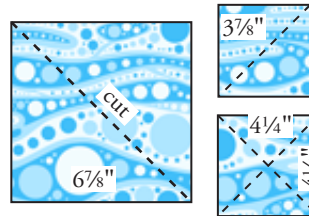
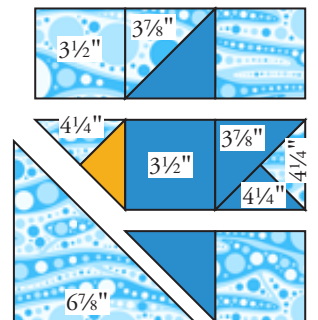


Diagram 2



Blue Fish Diagram

5. Referring to the Red Fish Diagram and Diagram 3, cut little fishies fabric patches as shown, noting direction of diagonal cuts. Join little fishies print patches, red dimples patches, and a gold triangle to make a red fish block, noting the rotation of the little fishies background patches. Be sure that all the fish prints are oriented horizontally within the block. Make 4 blocks.

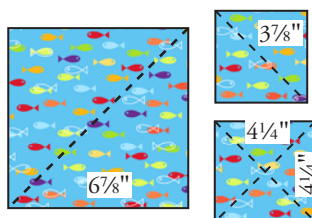
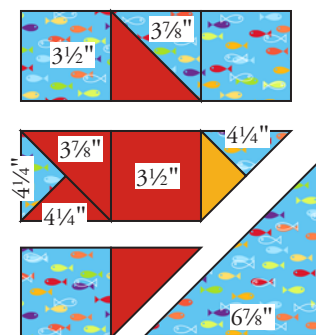
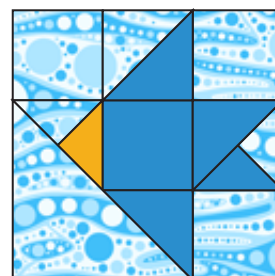


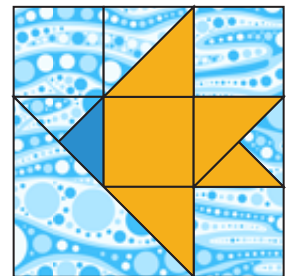
Diagram 3



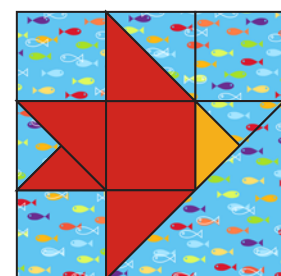
Red Fish Diagram



Blue Fish **Make 4**



Gold Fish **Make 1**



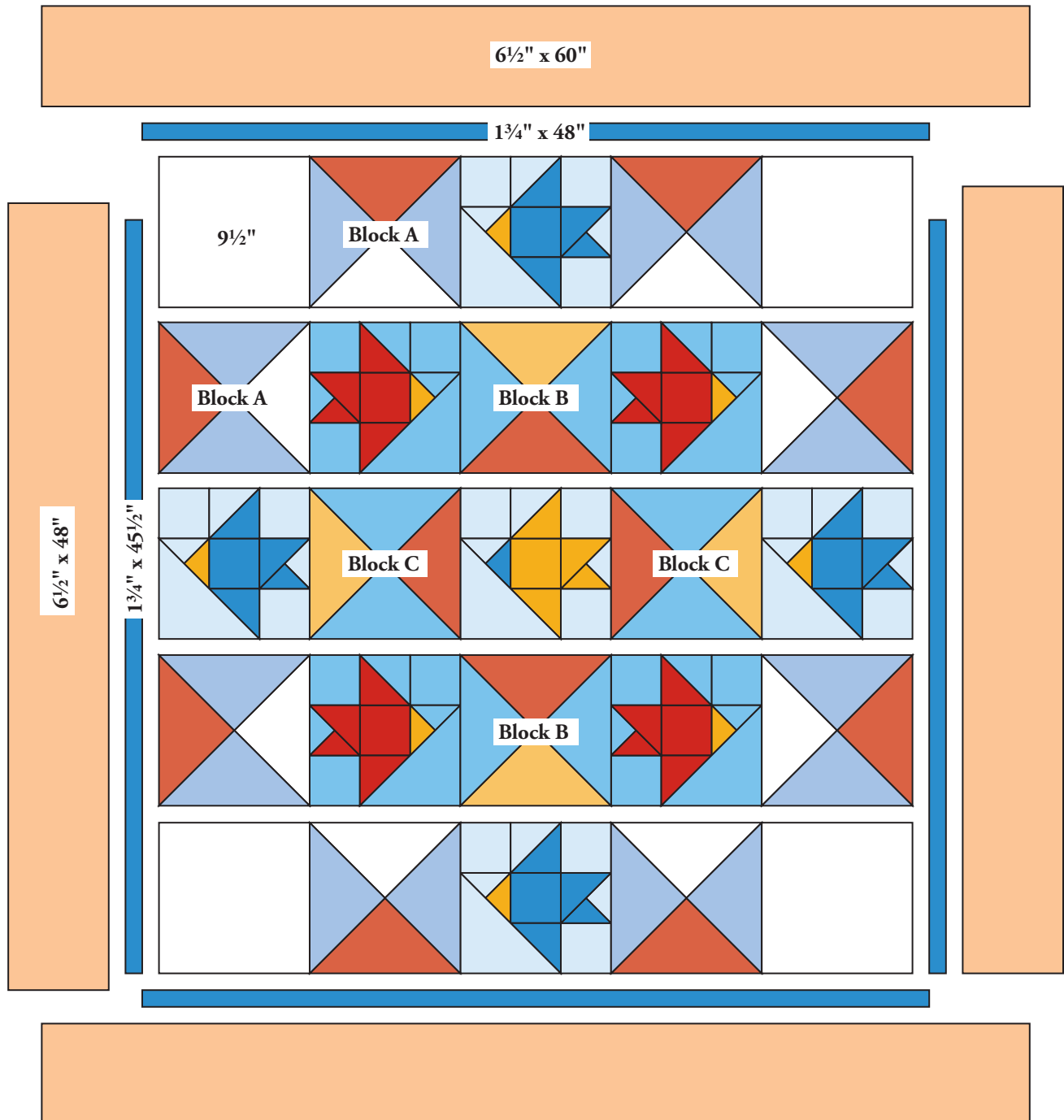
Red Fish **Make 4**

Snorkel Quilt

6. Refer to the Quilt Diagram throughout the assembly. Join blocks and $9\frac{1}{2}$ " purple whales print squares in 5 rows of 5 blocks each, noting orientation of blocks in each row. Join the rows in the correct order.
7. Sew shorter blue dimples border strips to the sides of the quilt. Sew longer border strips to the top and bottom. Sew shorter blue rail fence stripe borders to the sides and longer borders to the top and bottom.

Finishing the Quilt

8. Layer quilt with batting and backing. Free-motion quilt around motifs in the corner blue whales print squares. Quilt in the ditch around borders and block patches. Or if you prefer, quilt waves, bubbles and little fish across the surface in continuous-motion quilting. Bind with purple stripe to finish the quilt.



Quilt Diagram

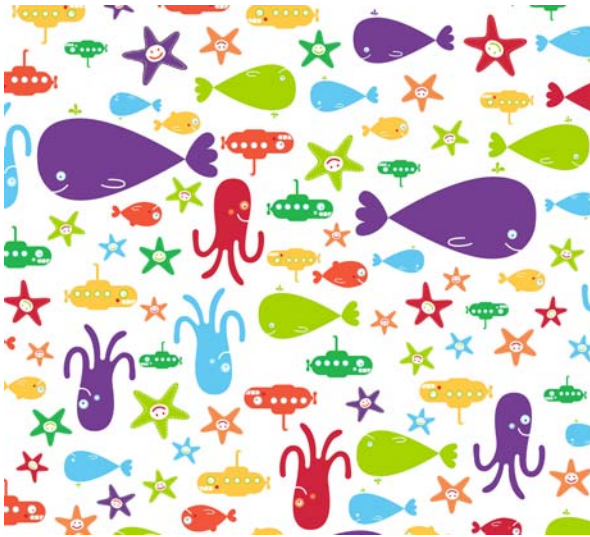
1384 Broadway
 New York, NY 10018
 (800) 223-5678
 www.andoverfabrics.com

Snorkel

by Cosmo Cricket™



makower uk®



4304-P*



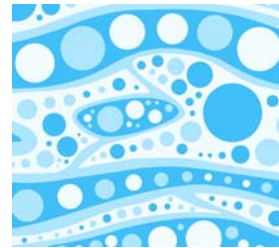
4305-B*



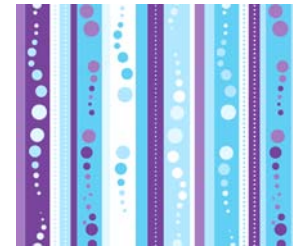
4306-B*



4307-B*



4308-B*



4309-P*



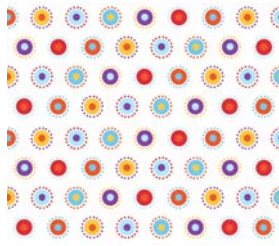
1867-R8*



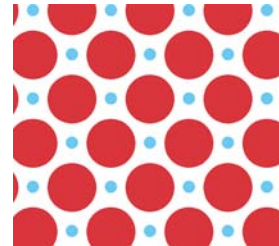
1867-W*



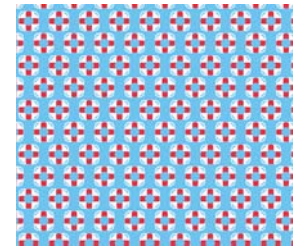
1867-Y12*



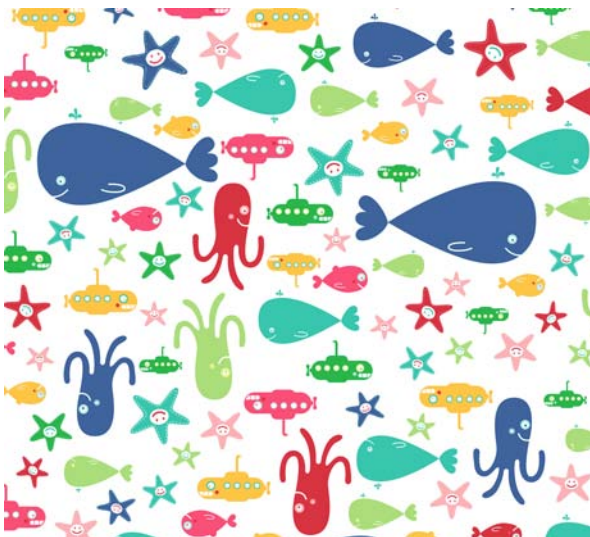
4310-B*



4311-R*



4312-B



4304-B



4305-T



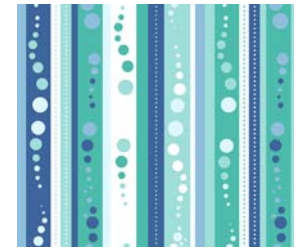
4306-G



4307-G



4308-T



4309-B



1867-T2



1867-Y3



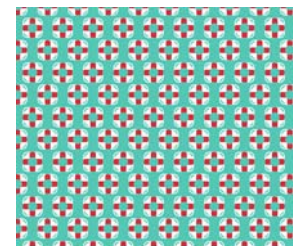
1867-O7



4310-T



4311-E



4312-T

*Indicates fabric used in quilt pattern. Fabrics shown are 25% of actual size.