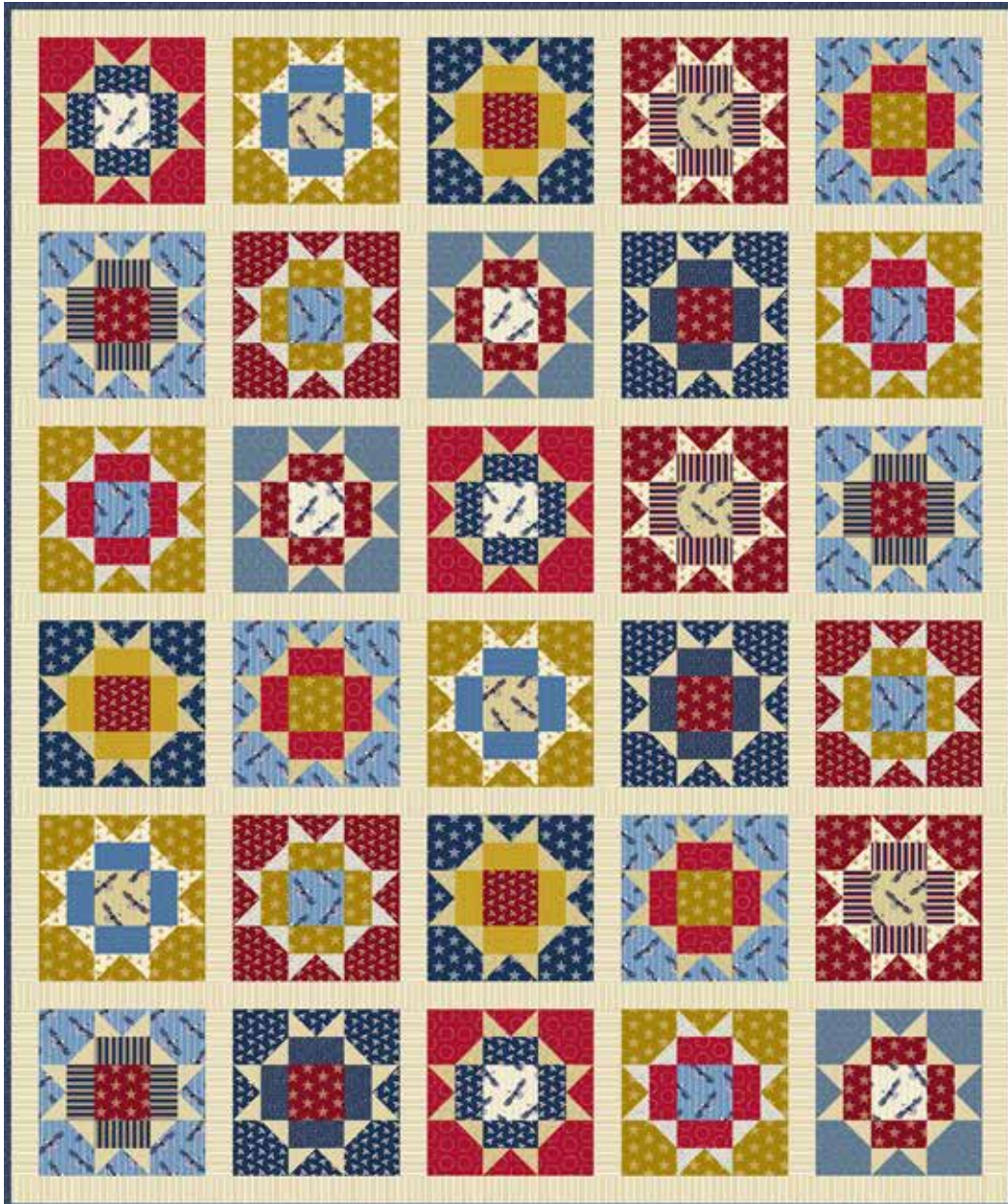


# Reveille

BY KATHY HALL



American Glory Quilt  
designed by: **Janet Houts**

Quilt Size: **72" x 86"**

[andoverfabrics.com](http://andoverfabrics.com)

## About Reveille

Reveille is the first bugle call rousing the military at sunrise. Kathy Hall inspires patriotism with this collection of stars and stripes.

andover • [makower uk](http://makower.uk)

Free Pattern Download Available

1384 Broadway New York, NY 10018  
Tel. (800) 223-5678 • [andoverfabrics.com](http://andoverfabrics.com)

# American Glory Quilt



Introducing Andover Fabrics new collection: REVEILLE by Kathy Hall

Quilt designed by Janet Houts

Quilt finishes 72" x 86"

30 Blocks: 12" x 12"

*Stars and stripes forever! This twin-size quilt is sure to bring out feelings of pride in our "sweet land of liberty." The piecing is quick and easy.*

## Cutting Directions

**Note:** All measurements are cut sizes and include 1/4" seam allowances. A fat 1/4 is an 18" x 20"-22" cut. WOF designates the width of fabric from selvedge to selvedge (approximately 42" wide).

### Cutting for 1 block.

**Read Step 1 before cutting patches.**

From a Light Print:

Cut (12) squares 2 1/2"

From Print #2:

Cut (4) squares 4 1/2" for corner patches

Cut (4) rectangles 2 1/2" x 4 1/2" for Flying Geese

From Print #3:

Cut (4) rectangles 2 1/2" x 4 1/2" for frame  
around center square

From Print #4:

Cut (1) square 4 1/2" for center patch

### Fabric A

Cut (26) strips 2 1/2" x WOF, pieced to make the following:

(7) sashes 2 1/2" x 7 1/2"

(36) sashes 2 1/2" x 12 1/2"

### Fabric B

Cut (8) strips 2 1/2" x WOF for binding

Cut (12) rectangles 2 1/2" x 4 1/2"

### Remaining Fabrics:

Cut patches as needed for each block (read Step 1)

### Backing

Cut (2) panels 40" x 94", pieced to fit quilt top with overlap on all sides

## Fabric Requirements

|                   |         | Yardage           | Fabric          |
|-------------------|---------|-------------------|-----------------|
| <b>Fabric A</b>   | sash    | 2 yards           | 8980-L          |
| <b>Fabric B</b>   | binding | 3/4 yard          | 8984-LB         |
| <b>4 Lights</b>   | blocks  | 5/8 yard each     |                 |
|                   | 8979-L  | 8981-N            | 8983-N 8984-L   |
| <b>6 Fat 1/4s</b> | blocks  | Fat 1/4 yard each |                 |
|                   | *8978-L | 8978-N            | 8980-LB 8980-N  |
|                   | 8983-LB | 8983-Y            |                 |
| <b>4 Darks</b>    | blocks  | 1/2 yard each     |                 |
|                   | 8979-LB | 8979-NR           | 8981-NB 8982-LB |
| <b>2 Reds</b>     | blocks  | 3/4 yard each     |                 |
|                   | 8981-LR | 8982-NR           |                 |
| <b>2 Med.</b>     | blocks  | 1 yard each       |                 |
|                   | 8978-LB | 8982-Y            |                 |
| <b>Backing</b>    |         | 5 1/4 yards       | *8978-L         |

## Making the Quilt

1. Yardage is given to make the 30 blocks as shown in the block diagrams. Each block requires 4 fabrics-one light print and 3 prints from the remaining fabrics. Refer to the blocks to choose fabrics needed, and cut patches for one block at a time, referring to cutting directions above. Hint: Yardage is sufficient to allow you to make slight alterations to fabric placement if you wish. Pay attention to the cutting of directional prints. When cutting the 2 1/2" x 4 1/2" rectangles for Flying Geese from a stripe, 2 of the rectangles must be cut lengthwise and 2 cut crosswise for the print to be oriented correctly in the block. Also, decide if you want the stripes in the 4 rectangle frames around the center square to be cut lengthwise or crosswise. Whatever you decide, cut these 4 rectangles alike.
2. Draw a diagonal line on the wrong side of all 360 light 2 1/2" squares. With practice, you may be able to eliminate this drawn line and stitch the little squares on "by eye." The corner units in each block are made with a quick stitch-and-flip piecing method. Hint: If the corner squares and Flying Geese are made with a directional print, before sewing, lay out the patches on a flat surface and rotate them as needed to be sure that the print is oriented as you wish. The 2 1/2" marked squares will need to be stitched to a different corner on each of the 4 1/2" squares. Refer to a block with a striped print in the corners if this is not clear to you.

# American Glory Quilt

3. Referring to Diagram 1, place a marked light square on a  $4\frac{1}{2}$ " corner square, right sides together, aligning raw edges at the corner. Stitch on the drawn line; trim away and discard excess fabric. Press open. Make 4 corner units for each block, referring to directions in Step 2 for orientation of directional print squares.

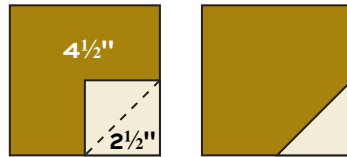


Diagram 1

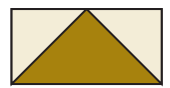
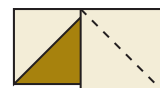
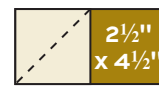
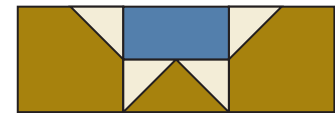
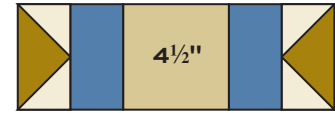
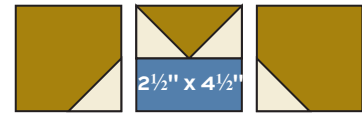


Diagram 2

Flying Geese

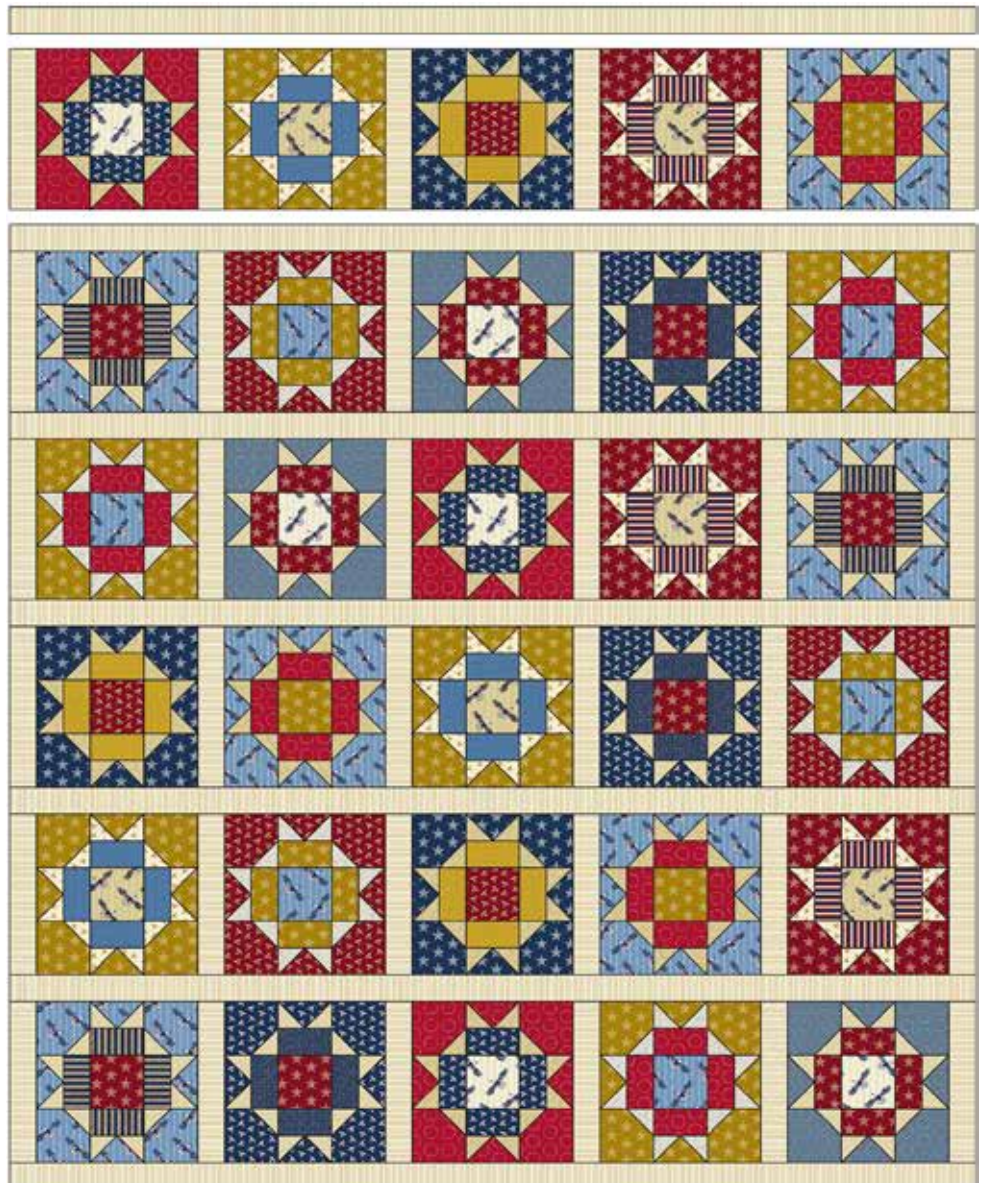
4. The blocks each have 4 Flying Geese units. Place a marked light square on one end of a  $2\frac{1}{2}$ " x  $4\frac{1}{2}$ " rectangle, right sides together. Sew on the marked line; trim away and discard excess fabric (Diagram 2). Press open. Repeat this process on the opposite end of the rectangle to make a Flying Geese Unit. Make 4 total for each block.



Block - Make 30

5. Referring to the block diagram, arrange and join the pieced units and patches in 3 rows. Join the rows to make a block. Make 3 each of the 10 different blocks, or arrange the fabrics as you desire. Make 30 blocks total.

6. Referring to the Quilt Diagram, on a large flat surface, lay out the blocks in 6 rows. Pay attention to the orientation of the directional prints in each block. Once you are satisfied with the arrangement, join 5 blocks with 6 short sashes to make a horizontal row. Make 6 rows. Join the rows with the long sashes in between rows.



Quilt Diagram

## Finishing the Quilt

7. Layer the quilt with batting and backing and baste. Quilt in the ditch around sashes and block patches. Bind to finish the quilt.

# Reveille

BY KATHY HALL



8978-L



8978-LB



8978-N



8979-L



8979-LB



8979-NR



8980-L



8980-LB



8980-N



8981-LR



8981-N



8981-NB



8982-LB



8982-NR



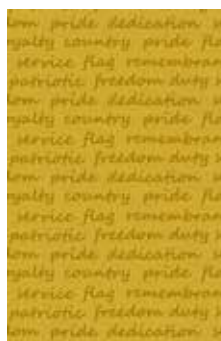
8982-Y



8983-LB



8983-N



8983-Y



8984-L



8984-LB



8984-NB

All fabrics are used in quilt pattern.  
Fabrics shown are 50% of actual size.

Free Pattern Download Available

1384 Broadway New York, NY 10018  
Tel. (800) 223-5678 • [andoverfabrics.com](http://andoverfabrics.com)