

Pineapple

BY SUITE 1500



Pineapple Upside Down Cake
Quilt Design:

Heidi Pridemore

Quilt Size: 67" x 79"

andoverfabrics.com



andover



makower uk
The Henley Studio

Free Pattern Download Available

1384 Broadway New York, NY 10018
Tel. (800) 223-5678 • andoverfabrics.com

Pineapple Upside Down Cake



Featuring Andover Fabrics new Collection: Pineapple by Suite 1500

Quilt designed by Heidi Pridemore

Quilt finished 67" x 79"

Cutting Directions

Note: Read assembly directions before cutting patches. Borders are cut to exact length required plus $\frac{1}{4}$ " seam allowance. WOF designates the width of fabric from selvedge to selvedge (approximately 42" wide).

Fabric A Cut (2) 49 $\frac{1}{2}$ " x WOF strips. Sew the strips together and trim to 49 $\frac{1}{2}$ " x 61 $\frac{1}{2}$ " to make the Center Block.

Fabric B Cut (6) 3 $\frac{1}{2}$ " x WOF strips. Sub-cut the strips into (36) 3 $\frac{1}{2}$ " x 6 $\frac{1}{2}$ " strips.

Fabric C Cut (6) 3 $\frac{1}{2}$ " x WOF strips. Sub-cut the strips into (35) 3 $\frac{1}{2}$ " x 6 $\frac{1}{2}$ " strips. Cut (4) 2 $\frac{1}{2}$ " x WOF strips. Sew the strips together end to end with diagonal seams and cut two 2 $\frac{1}{2}$ " x 75 $\frac{1}{2}$ " strips. Cut (4) 2 $\frac{1}{2}$ " x WOF strips. Sew the strips together end to end with diagonal seams and cut two 2 $\frac{1}{2}$ " x 67 $\frac{1}{2}$ " strips. Cut (8) 2 $\frac{1}{2}$ " x WOF strips for the binding.

Fabric D Cut (2) 3 $\frac{1}{2}$ " x WOF strips. Sub-cut the strips into (9) 3 $\frac{1}{2}$ " x 6 $\frac{1}{2}$ " strips. Cut (4) 1 $\frac{1}{2}$ " x WOF strips. Sew the strips together end to end with diagonal seams and cut two 1 $\frac{1}{2}$ " x 61 $\frac{1}{2}$ " strips. Cut (3) 1 $\frac{1}{2}$ " x WOF strips. Sew the strips together end to end with diagonal seams and cut two 1 $\frac{1}{2}$ " x 51 $\frac{1}{2}$ " strips.

Fabric Requirements

		Yardage	Fabric
Fabric A	center block	3 yards	8256-B
Fabric B	blocks	$\frac{3}{4}$ yard	8260-B
Fabric C	blocks, outer border, binding	1 $\frac{7}{8}$ yards	8258-B
Fabric D	blocks, inner border	$\frac{5}{8}$ yard	8257-B
Fabric E	blocks	$\frac{1}{4}$ yard	8259-B
Fabric F	blocks	$\frac{3}{4}$ yard	8257-N
Fabric G	blocks	$\frac{3}{4}$ yard	8259-N
Fabric H	blocks	$\frac{1}{4}$ yard	8260-N
Fabric I	blocks	$\frac{1}{4}$ yard	8261-N
Backing		5 yards	8256-B

Fabric E Cut (1) 3 $\frac{1}{2}$ " x WOF strip. Sub-cut the strip into (4) 3 $\frac{1}{2}$ " x 4 $\frac{1}{2}$ " strips.

Fabric F Cut (6) 3 $\frac{1}{2}$ " x WOF strips. Sub-cut the strips into (72) 3 $\frac{1}{2}$ " squares.

Fabric G Cut (6) 3 $\frac{1}{2}$ " x WOF strips. Sub-cut the strips into (70) 3 $\frac{1}{2}$ " squares.

Fabric H Cut (2) 3 $\frac{1}{2}$ " x WOF strips. Sub-cut the strips into (18) 3 $\frac{1}{2}$ " squares.

Fabric I Cut (1) 3 $\frac{1}{2}$ " x WOF strip. Sub-cut the strip into (8) 3 $\frac{1}{2}$ " squares.

Backing Cut (2) 87" x WOF strips. Sew the strips together and trim to make (1) 75" x 87" backing.

Pineapple Upside Down Cake

Making the Quilt

1. Block Assembly

Place (1) $3\frac{1}{2}$ " Fabric F square on the left side of (1) $3\frac{1}{2}$ " x $6\frac{1}{2}$ " Fabric B strip, right sides together (Diagram 1). Sew across the diagonal of the square from the upper right corner to the lower left corner (Diagram 1). Flip open the triangle formed and press (Diagram 2). Trim away the excess fabric from behind the triangle, leaving a $\frac{1}{4}$ " seam allowance.

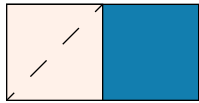


Diagram 1

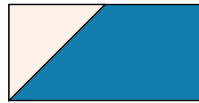


Diagram 2

2. Place another $3\frac{1}{2}$ " Fabric F square on the right side of the $3\frac{1}{2}$ " x $6\frac{1}{2}$ " Fabric B strip, right sides together (Diagram 3). Sew across the diagonal of the square from the upper left corner to the lower right corner (Diagram 3). Flip open the triangle formed and press (Diagram 4). Trim away the excess fabric from behind the triangle, leaving a $\frac{1}{4}$ " seam allowance to make (1) Unit 1.

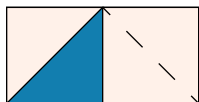


Diagram 3

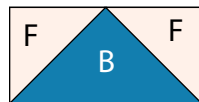


Diagram 4

3. Repeat Steps 1-2 to make (36) Unit 1's total.

Unit 1
make 36

4. Repeat Steps 1-2 using (70) $3\frac{1}{2}$ " Fabric G squares and (35) $3\frac{1}{2}$ " x $6\frac{1}{2}$ " Fabric C strips to make (35) Unit 2's (Diagram 5).

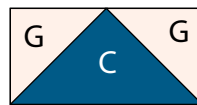


Diagram 5

5. Repeat Steps 1-2 using (18) $3\frac{1}{2}$ " Fabric H squares and (9) $3\frac{1}{2}$ " x $6\frac{1}{2}$ " Fabric D strips to make (9) Unit 3's (Diagram 6).

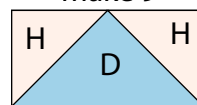


Diagram 6

6. Repeat Steps 1-2 using (8) $3\frac{1}{2}$ " Fabric I squares and (4) $3\frac{1}{2}$ " x $6\frac{1}{2}$ " Fabric E strips to make (4) Unit 4's (Diagram 7).

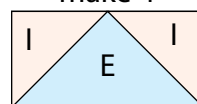


Diagram 7

7. Sew (1) $1\frac{1}{2}$ " x $61\frac{1}{2}$ " Fabric D strip to each side of the $49\frac{1}{2}$ " x $61\frac{1}{2}$ " Fabric A strip. Sew (1) $1\frac{1}{2}$ " x $51\frac{1}{2}$ " Fabric D strip to the top and to the bottom of the Fabric A strip to make the Center Block.

Quilt Top Assembly

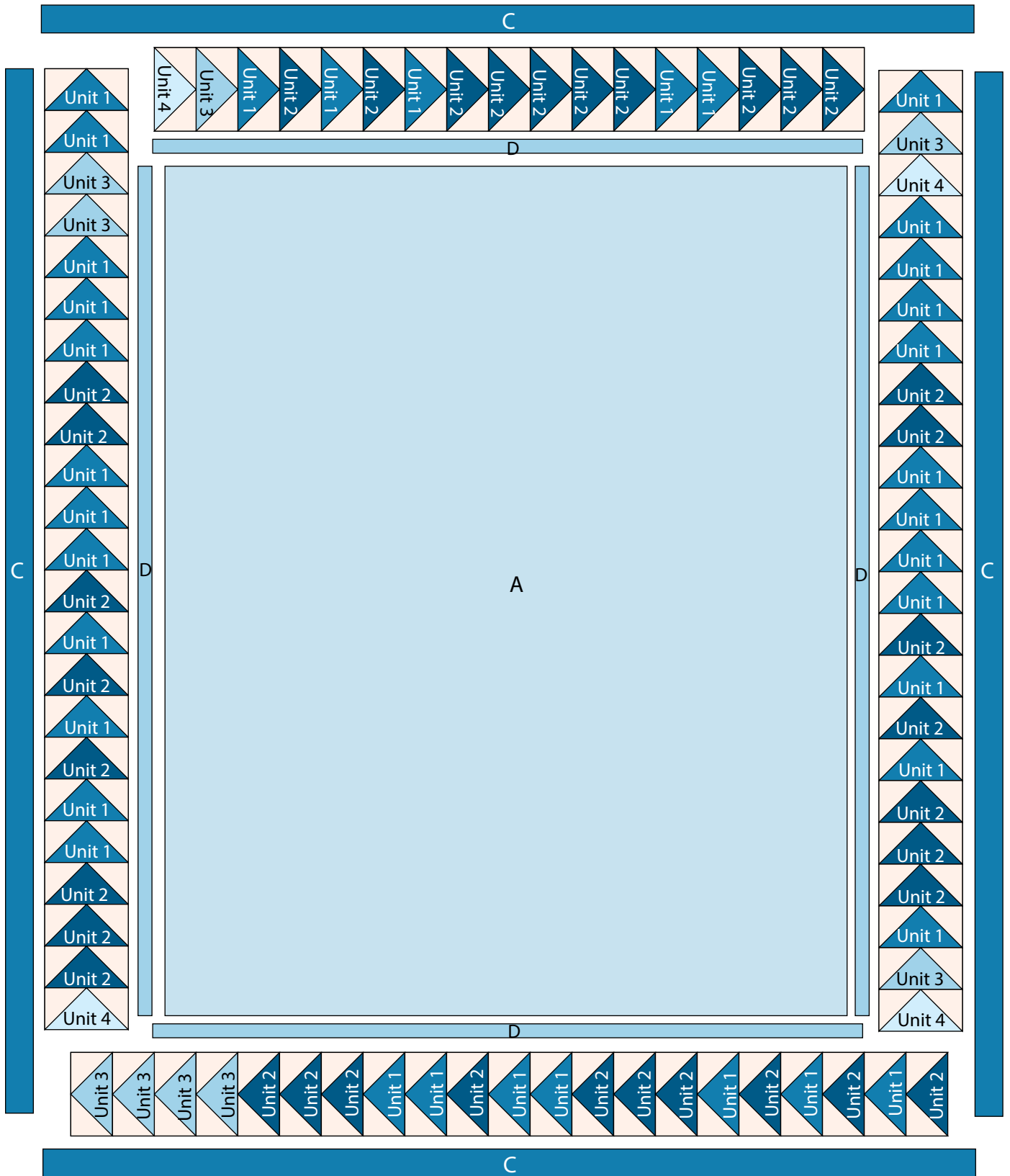
(Refer to the Quilt Layout when assembling the quilt top.)

8. Sew (17) assorted Units together lengthwise to make (1) strip. Sew this strip to the top of the Center Block.
9. Sew (23) assorted Units together lengthwise to make (1) strip. Repeat to make a second strip. Sew (1) strip to each side of the Center Block.
10. Sew (21) assorted Units together lengthwise to make (1) strip. Sew the strip to the bottom of the Center Block to make the quilt top.
11. Sew (1) $2\frac{1}{2}$ " x $75\frac{1}{2}$ " Fabric C strip to each side of the quilt top. Sew (1) $2\frac{1}{2}$ " x $67\frac{1}{2}$ " Fabric C strip to the top and to the bottom of the quilt top.

Finishing the Quilt

18. Layer and quilt as desired.
19. Sew the (8) Fabric C binding strips together, end to end with a 45° seams, to make the binding. Fold this long strip in half lengthwise with wrong sides together and press.
20. Bind as desired.

Pineapple Upside Down Cake



Quilt Layout

Pineapple

BY SUITE 1500



8256-B 8 yds
(includes backing)



8256-N



8257-B 5/8 yd



8257-N 3/4 yd



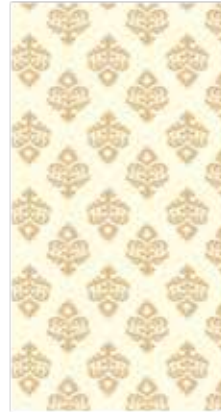
8258-B 1 7/8 yds
(includes binding)



8258-N



8259-B 1/4 yd



8259-N 3/4 yd



8260-B 3/4 yd



8260-N 1/4 yd



8261-B



8261-N 1/4 yd

About Our Fabrics

A recognized leader in the quilting industry, Andover Fabrics features designs by a wide variety of talented artists and licenses, including Downton Abbey and Eric Carle's Very Hungry Caterpillar. Catering to the tastes of creative and dedicated quilters, Andover has a style for everyone — authentic reproductions, romantic florals, modern and more.

Fabrics shown are 25% of actual size.

andover

makower uk
The Henley Studio

Free Pattern Download Available

1384 Broadway New York, NY 10018
Tel. (800) 223-5678 • andoverfabrics.com