

Franklin

BY KATHY HALL



Franklin Quilt designed
by: **Kathy Hall**

Quilt Size: **66" x 66"**

andoverfabrics.com



andover



makower uk
The Henley Studio

Free Pattern Download Available

1384 Broadway New York, NY 10018
Tel. (800) 223-5678 • andoverfabrics.com

Franklin Quilt



Introducing Andover Fabrics new collection: **FRANKLIN** by Kathy Hall

Quilt designed by Kathy Hall

Quilt finishes 66" x 66"

16 Blocks: 12" x 12"

An elaborate border print frames the scrappy blocks in this appealing wall quilt. The design disguises the blocks, allowing you to see Xs and Os as your perspective changes.

Cutting Directions

Note: Read assembly directions before cutting patches. All measurements are cut sizes and include 1/4" seam allowances. A fat 1/4 is an 18" x 20"-22. The mitered border includes extra length for insurance. WOF designates the width of fabric from selvedge to selvedge (approximately 42" wide).

Fabric A

Fussy-cut (4) borders 8 1/2" x 68", cut lengthwise

Fabric B

Cut (7) strips 2 1/2" x WOF for binding
Cut (6) strips 1 1/2" x WOF, pieced to make the following: 4 borders 1 1/2" x 52"

Fabric C

Cut (14) squares 3 7/8" x 3 7/8", cut in half diagonally to make 28 half-square triangles (Read Step 1 before cutting)
Cut (100) squares 2 3/8" x 2 3/8", cut in half diagonally to make 200 half-square triangles (Read Step 1 before cutting)

11 Dark Prts.

From each:
Cut (4-5) Template 1 (52 total)
Cut (8-10) squares 2" x 2" (100 total)

3 Light Prts.

From each:
Cut (3-5) Template 1 (12 total)

Backing

Cut (2) panels 37" x 74", pieced to fit quilt top with overlap on all sides

Fabric Requirements

		Yardage	Fabric
Fabric A	border	2 1/4 yards	8651-R
Fabric B	border, binding	1	A-C-Ebony
Fabric C	blocks	1 1/4 yards	8611-LR
11 Dark Prts.	blocks	fat 1/4 yard each	
	8652-C *8652-R	8653-CK	8563-CO
	8653-RK	8654-CO	8654-R 8654-RN
	8655-C	8655-CK	8655-R
3 Light Prts.	blocks	fat 1/4 yard each	
	8656-CK	8656-R	8656-RN
*Backing		4 1/4 yards	*8652-R

Note: Blue quilt uses 8651-C for border.
Blue quilt uses 8652-C for backing.
Other fabrics remain the same in both quilts.

Making the Quilt

- The cream Fabric C is a directional print. If you prefer to keep the print upright in all the patches as shown in the quilt, follow these cutting and sewing directions. The arrows in these figures show the print upright. Referring to Diagram 1, cut 7 cream 3 7/8" squares in half diagonally in one direction and cut the other 7 squares in mirror image as shown. Likewise, cut 50 cream 2 3/8" squares diagonally as shown and the other 50 squares in mirror image (Diagram 2).

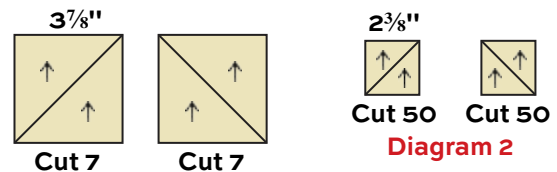


Diagram 1

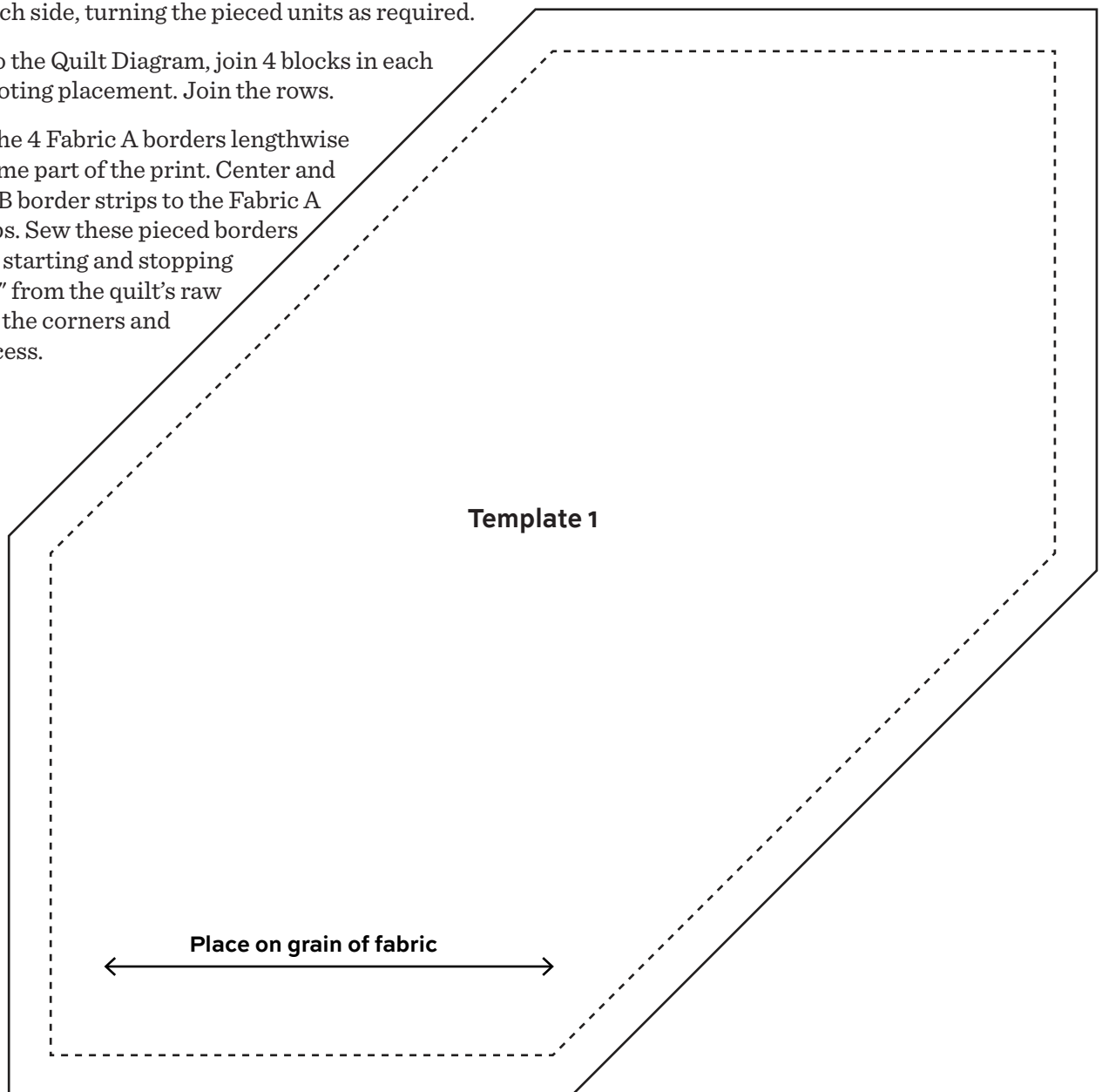
- Refer to the figures in Diagram 3. These 4 different pieced units are used to keep the print upright in the blocks. Sew 2 cream 2 3/8" triangles to adjacent sides of each dark 2" square, paying attention to the direction of the cream print as indicated by the arrows and to the placement of the triangles. Hint: Take "scant" 1/4" seams. Press the seam allowances away from the square. Repeat to make 25 of each pieced unit.



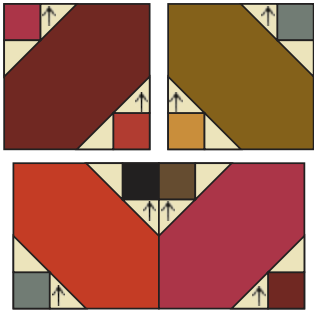
Diagram 3

Franklin Quilt

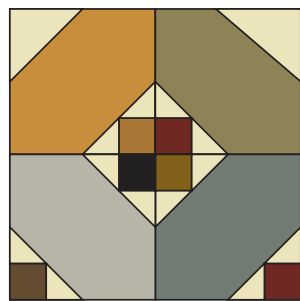
3. This quilt has 3 different blocks, shown on next page, each with a different number and orientation of pieced units from Step 2. Based on where each block is positioned in the quilt, the pieced units are turned as needed to allow the cream print to remain upright. Block As are not turned, so they can be made as shown, with the arrows indicating the orientation of cream patches. Sew pieced units to long sides of 4 different Template 1 patches, paying attention to orientation of the cream print. Join the 4 quarters of the block, rotating as needed to make the design. Make 4 Block A.
4. To keep the cream print oriented correctly when making Block Cs, refer to the top left Block C in the Quilt Diagram. On a flat surface, lay out 5 pieced units, 4 Template 1, and 3 large cream triangles. Be sure that you have chosen the correct pieced units to keep the cream print upright. Sew the parts together. Join the 4 quarters to make a Block C. Make 4 blocks, referring to the rotation of Block C in the corners of the quilt, and turning the pieced units as required to keep the cream print upright.
5. In the same manner, make 8 Block B, again noting the rotation of these blocks in the quilt. Join 6 pieced units and 2 large cream triangles to the Template 1 patches. Make 2 Block B for the top of the quilt, 2 for the bottom, and 2 for each side, turning the pieced units as required.
6. Referring to the Quilt Diagram, join 4 blocks in each of 4 rows, noting placement. Join the rows.
7. Fussy-cut the 4 Fabric A borders lengthwise from the same part of the print. Center and sew Fabric B border strips to the Fabric A border strips. Sew these pieced borders to the quilt, starting and stopping stitching $\frac{1}{4}$ " from the quilt's raw edge. Miter the corners and trim the excess.



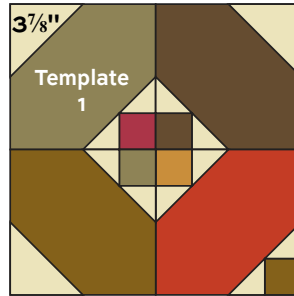
Franklin Quilt



Block A - Make 4



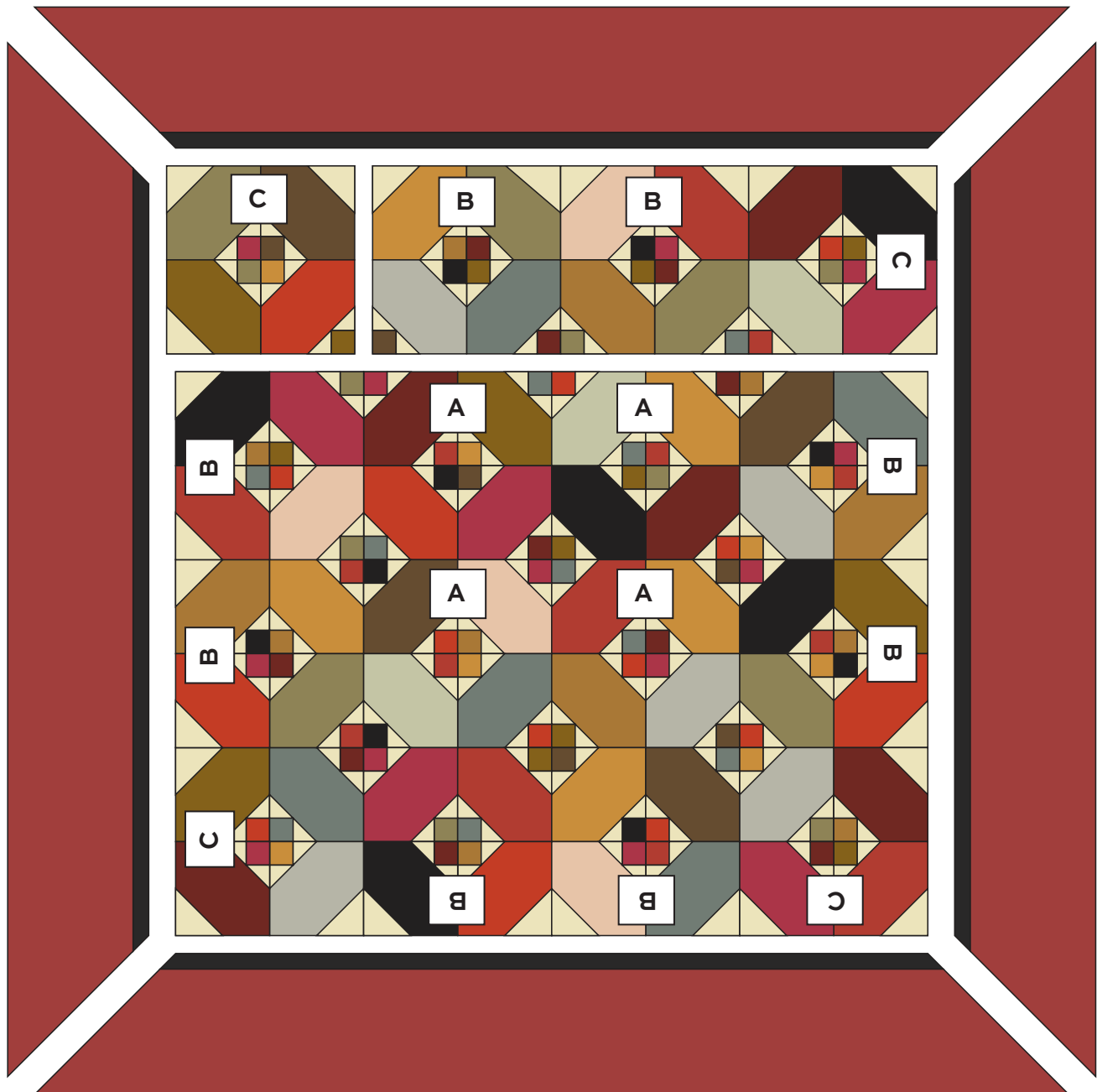
Block B - Make 8



Block C - Make 4

Finishing the Quilt

8. Layer the quilt with batting and backing and baste. Quilt in the ditch around borders and block patches. Quilt around the printed motifs in the outer border. Bind to finish the quilt.



Quilt Diagram

Franklin

BY KATHY HALL



8651-C



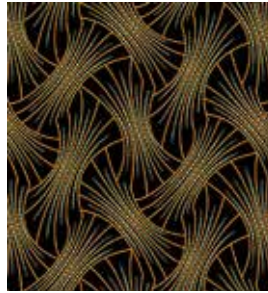
8651-R



8652-C



8652-R



8653-CK



8653-CO



8653-RK



8654-CO



8654-R



8654-RN



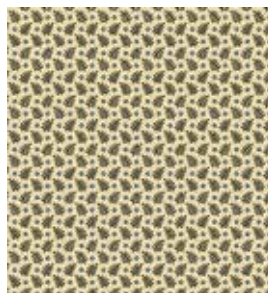
8655-C



8655-CK



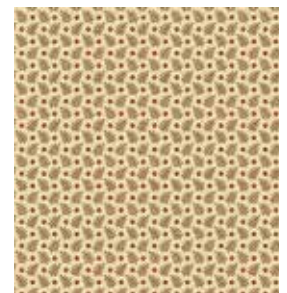
8655-R



8656-CK



8656-R



8656-RN



8611-LR



A-C-Ebony

All fabrics are used in quilt pattern. Fabrics shown are XX% of actual size.

andover

makower uk
The Henley Studio

Free Pattern Download Available

1384 Broadway New York, NY 10018
Tel. (800) 223-5678 • andoverfabrics.com