



Quilt designed by Heidi Pridemore
 Quilt size: 62" x 72"



Flutterby

Mary Engelbreit™

©Mary Engelbreit Enterprises, Inc. All Rights Reserved
 under License to Andover Fabrics Inc.



1384 Broadway
 New York, NY 10018
 (800) 223-5678

www.andoverfabrics.com

Revised 4/13/12

Quilt finishes 62" x 72"
Panel Block: 24" x 24"
Pieced Blocks: 16" x 24"

Cutting Directions

Note: Borders are cut the exact lengths required plus ¼" seam allowances. WOF designates the width of fabric from selvedge to selvedge (approximately 42" wide).

Fabric A Fussy cut (2) 20½" x 20½" large butterfly squares.
Fussy cut (4) 9½" x 9½" small butterfly squares for the corners.
Fussy cut (2) 8½" x 8½" small butterfly squares for the blocks.

Fabric B Fussy cut (2) 9½" x 54½" strips centering each on the stripe from the length of fabric (LOF).
Fussy cut (2) 9½" x 44½" strips centering each on the stripe from LOF.

Fabric C Cut (3) 2½" WOF strips

Fabric D Cut (3) 2½" WOF strips

Fabric E Cut (16) 1½" x 6½" strips.
Cut (16) 1½" x 4½" strips.

Fabric F* Cut (24) 1½" x 2½" strips.
Cut (24) 1½" x 4½" strips.

Fabric G Cut (24) 1½" x 2½" strips.
Cut (24) 1½" x 4½" strips.
Cut (7) 2½" x 42" strips for binding.

Fabric H Fussy cut (3) 2½" x 44½" strips, centering each on a row of flowers & butterflies from LOF.
Fussy cut (4) 2½" x 24½" strips, centering each on a row of flowers & butterflies from LOF.
Fussy cut (24) 2½" x 2½" squares, centering each on a butterfly.
Fussy cut (8) 2½" x 6½" strips, centering each on a flower.

***Backing** Cut (2) panels 43" x 70", pieced to fit the quilt top with overlap on all sides for backing.

Fabric Requirements

		Yardage	Light	Brown
Fabric A	Flutterby Panel	2 panels	5806-L	5806-N
Fabric B	Flutterby Stripe	1⅔ yards	5807-L	5807-N
Fabric C	Yellow Check Print	¼ yard	5812-L	5812-NO
Fabric D	Packed Flowers	¼ yard	5811-L	5811-NY
Fabric E	Butterflies	⅜ yard	5809-L	5809-N
Fabric F*	Flowers and Leaves	⅓ yard	5810-L	5810-N
Fabric G	Green Check Print	⅞ yard	5812-LG	5812-N
Fabric H	Flower Stripe	1⅓ yards	5808-L	5808-N
Fabric F	Backing	4 yards	5810-L	5810-N

**Additional fabric required for backing.*

Panel Blocks

1. Sew together one 2½" x WOF Fabric C strip and one 2½" x WOF Fabric D strip, lengthwise to make one strip set (Fig. 1) Press towards Fabric D. Repeat to make three strips sets. Sub-cut the strip sets into forty-four 2½" units (Fig. 2).
2. Sew together five 2½" units to make one side checkerboard border (Fig. 3). Press towards Fabric D. Repeat to make four-side checkerboard borders total.
3. Sew together six 2½" units to make one top checkerboard border (Fig. 4). Press towards Fabric D. Repeat to make two top checkerboard borders and two bottom checkerboard borders total.
4. Sew one side checkerboard border to each side of one 20½" Fabric A square. Sew one top and bottom checkerboard border to the 20½" Fabric A square to make one 24½" x 24½" panel block (Fig. 5). Press towards the Fabric A square. Repeat to make a second panel block.



FIG. 1

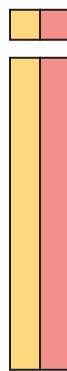


FIG. 2



FIG. 3



FIG. 4

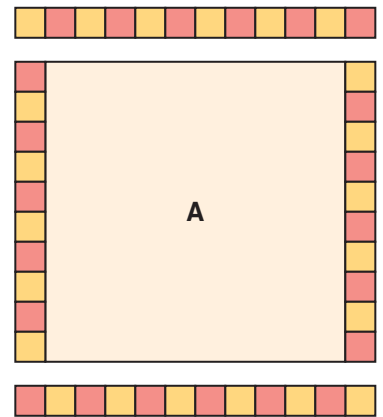
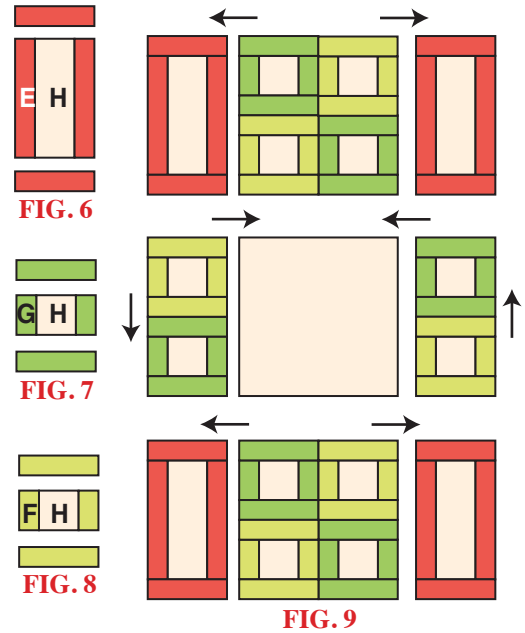


FIG. 5

Flutterby Quilt

Pieced Blocks

- Sew one $1\frac{1}{2}$ " x $6\frac{1}{2}$ " Fabric E strip to each side of one $2\frac{1}{2}$ " x $6\frac{1}{2}$ " Fabric H strip. Press towards Fabric E. Sew one $1\frac{1}{2}$ " x $4\frac{1}{2}$ " Fabric E strip to the top and bottom of the $2\frac{1}{2}$ " x $6\frac{1}{2}$ " Fabric E strip to make one $4\frac{1}{2}$ " x $8\frac{1}{2}$ " flower block (Fig. 6). Press towards Fabric E. Repeat to make eight flower blocks.
- Sew one $1\frac{1}{2}$ " x $2\frac{1}{2}$ " Fabric G strip to each side of one $2\frac{1}{2}$ " Fabric H square. Press towards Fabric G. Sew one $1\frac{1}{2}$ " x $4\frac{1}{2}$ " Fabric G strip to the top and bottom of the $2\frac{1}{2}$ " Fabric H square to make one $4\frac{1}{2}$ " x $4\frac{1}{2}$ " G-butterfly block (Fig. 7). Press towards Fabric G. Repeat to make twelve $4\frac{1}{2}$ " x $4\frac{1}{2}$ " G-butterfly blocks.
- Sew one $1\frac{1}{2}$ " x $2\frac{1}{2}$ " Fabric F strip to each side of one $2\frac{1}{2}$ " Fabric H square. Press towards Fabric F. Sew one $1\frac{1}{2}$ " x $4\frac{1}{2}$ " Fabric F strip to the top and bottom of the $2\frac{1}{2}$ " Fabric H square to make one $4\frac{1}{2}$ " x $4\frac{1}{2}$ " F-butterfly block (Fig. 8). Press towards Fabric F. Repeat to make twelve $4\frac{1}{2}$ " x $4\frac{1}{2}$ " F-butterfly blocks.
- Follow Figure 9 to sew together four flower blocks, six G-butterfly blocks, six F-butterfly blocks and one $8\frac{1}{2}$ " x $8\frac{1}{2}$ " Fabric A square to make one $16\frac{1}{2}$ " x $24\frac{1}{2}$ " pieced block. Refer to the arrows for pressing directions. Repeat to make a second pieced block.



Quilt Top

- Sew one pieced block to the left side of one panel block. Press towards the panel block. Sew one $2\frac{1}{2}$ " x $24\frac{1}{2}$ " Fabric H strip to each side of the sewn blocks to make the $24\frac{1}{2}$ " x $44\frac{1}{2}$ " bottom row (Fig. 10). Press towards Fabric H.
- Sew one pieced block to the right side of one panel block. Press towards the panel block. Sew one $2\frac{1}{2}$ " x $24\frac{1}{2}$ " Fabric H strip to each side of the sewn blocks to make the $24\frac{1}{2}$ " x $44\frac{1}{2}$ " top row (Fig. 11). Press towards Fabric H.
- Sew the top and bottom rows together alternating them with three $2\frac{1}{2}$ " x $44\frac{1}{2}$ " Fabric H strips to make one $44\frac{1}{2}$ " x $54\frac{1}{2}$ " quilt top (Fig. 12). Press towards Fabric H.
- Sew one $9\frac{1}{2}$ " x $54\frac{1}{2}$ " Fabric B strip to each side of the quilt top. Press towards Fabric B. Sew one $9\frac{1}{2}$ " x $9\frac{1}{2}$ " Fabric A square to each end of the two $9\frac{1}{2}$ " x $44\frac{1}{2}$ " Fabric B strips to make the top and bottom borders. Press towards Fabric B. Sew the borders to the quilt top. Press towards Fabric B.

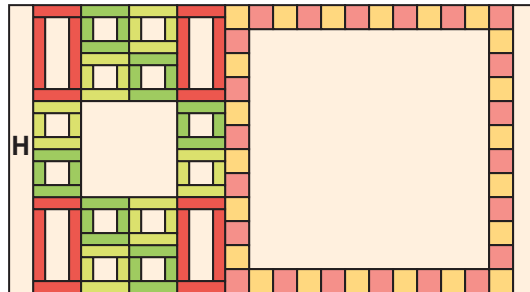


FIG. 10

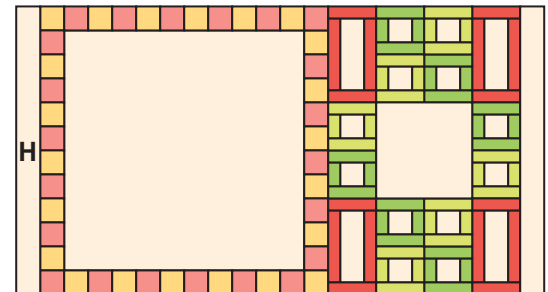


FIG. 11

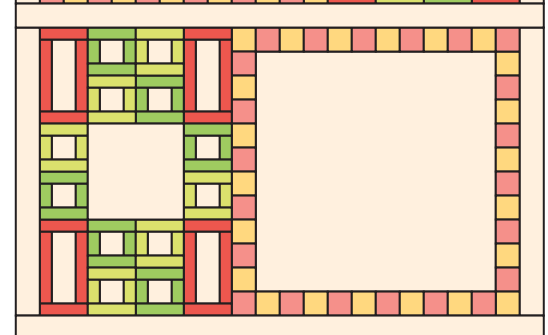
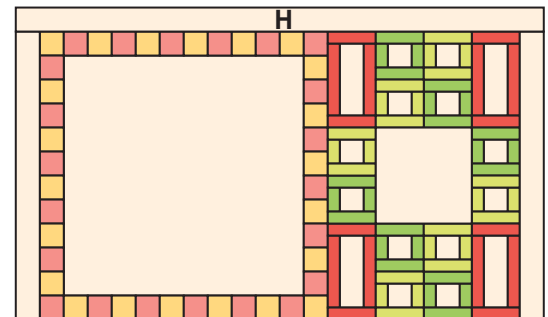
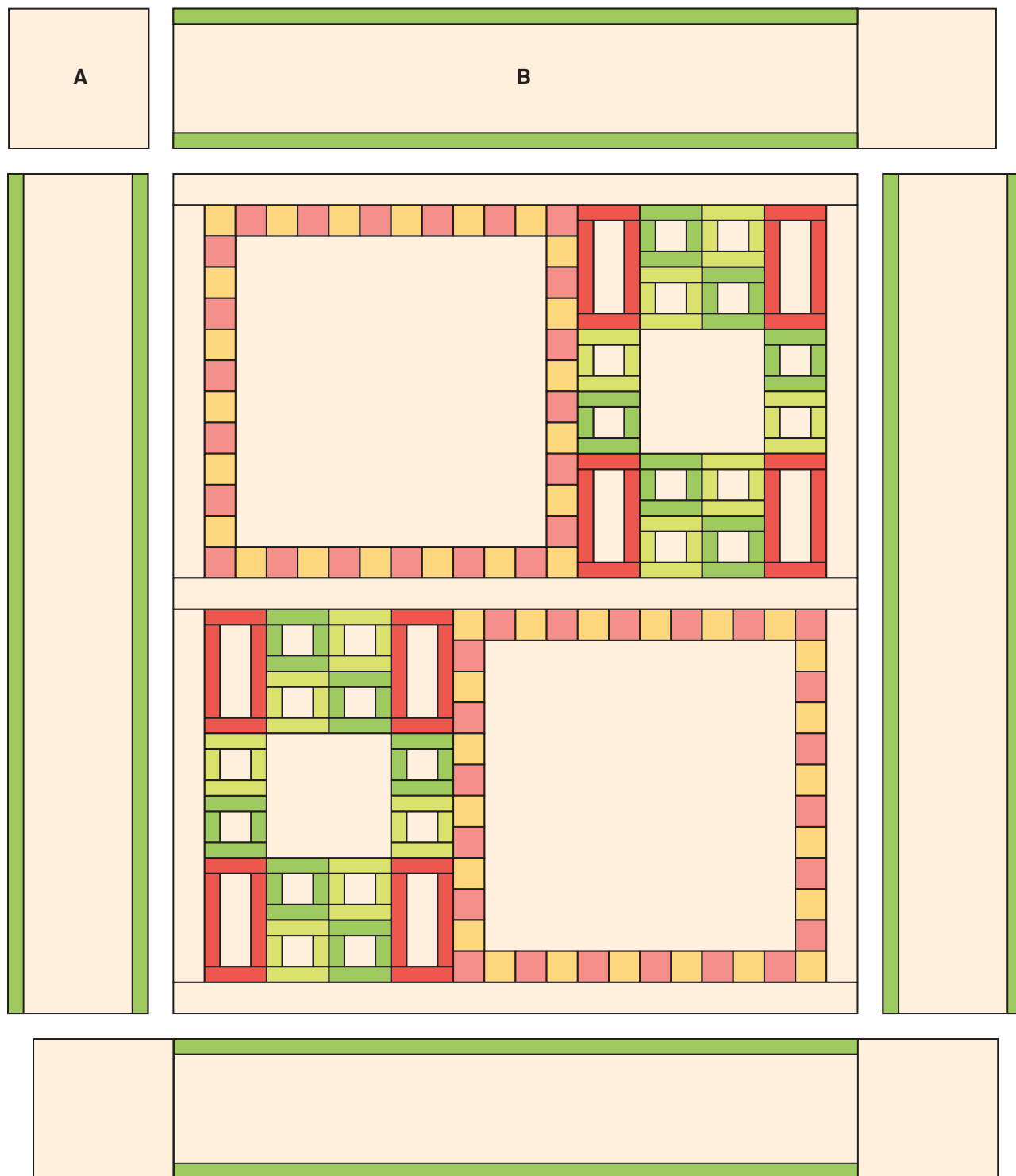


FIG. 12

Finishing the Quilt:

- Layer and quilt as desired. Sew the seven $2\frac{1}{2}$ " x 42 " Fabric G strips together end-to-end with a 45° seams to make the binding. Fold this long strip in half lengthwise with wrong sides together and press. Bind as desired.

Flutterby Quilt



Quilt Assembly Diagram

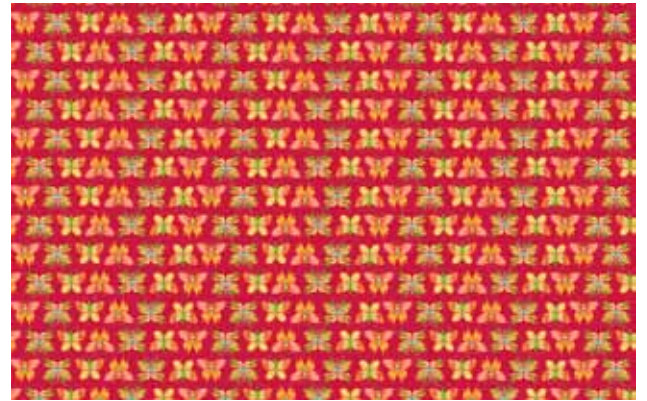
1384 Broadway
New York, NY 10018
(800) 223-5678
www.andoverfabrics.com

Flutterby

©Mary Engelbreit Enterprises, Inc.
All Rights Reserved under License to Andover Fabrics Inc.



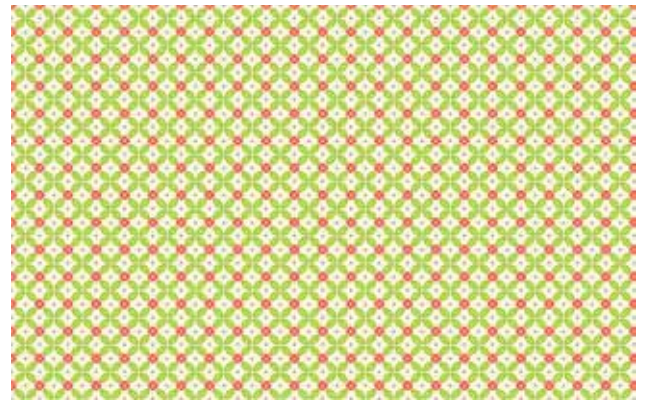
5806-L



5809-L



5807-L



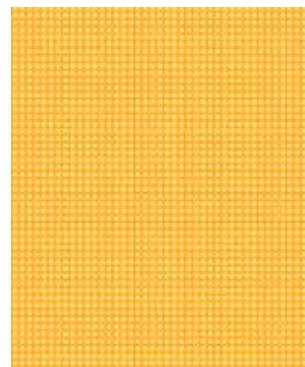
5810-L



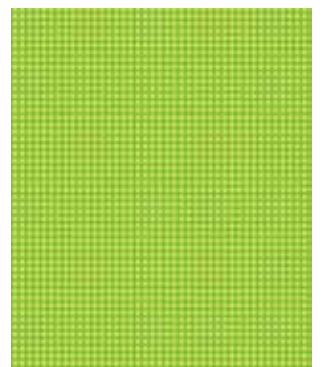
5808-L



5811-L



5812-L



5812-LG

*Indicates fabric used in quilt pattern. Fabrics shown are 10% of actual size

Free Pattern Download Available at www.andoverfabrics.com

Revised 4/13/12

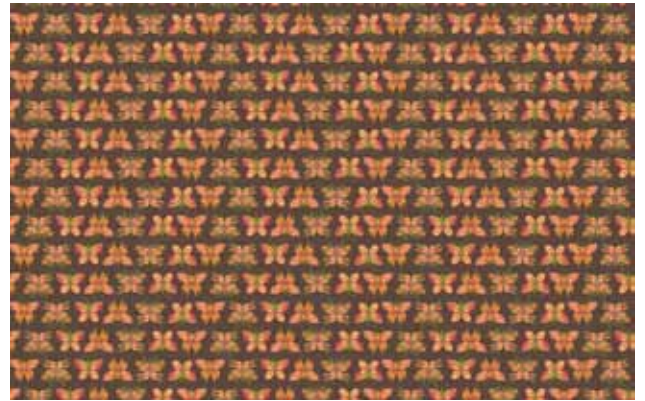
1384 Broadway
New York, NY 10018
(800) 223-5678
www.andoverfabrics.com

Flutterby

©Mary Engelbreit Enterprises, Inc.
All Rights Reserved under License to Andover Fabrics Inc.



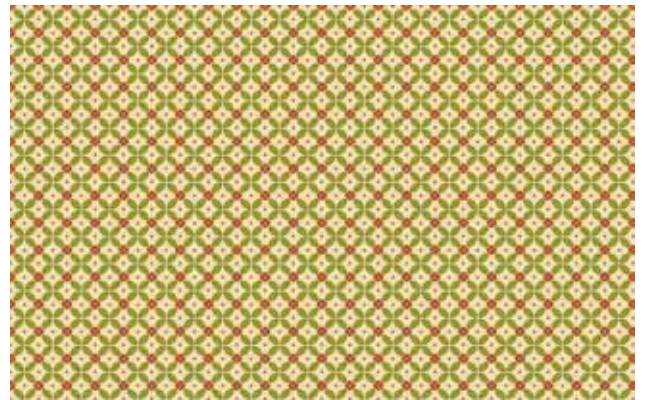
5806-N



5809-N



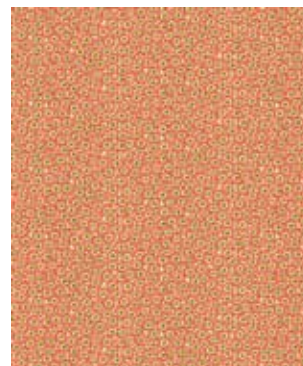
5807-N



5810-N



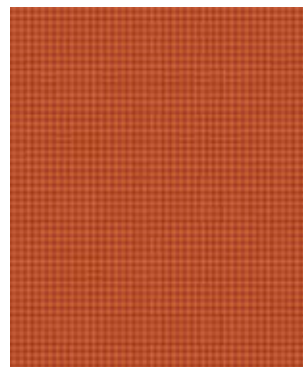
5808-N



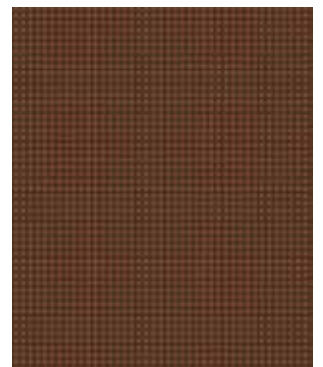
5811-N



5811-NY



5812-N



5812-N

*Indicates fabric used in quilt pattern. Fabrics shown are 10% of actual size

Free Pattern Download Available at www.andoverfabrics.com

Revised 4/13/12