

# Beehive

BY RENÉE NANNEMAN



Beehive Quilt  
designed by:

**Renée Nanneman**

Quilt Size: **66" x 90"**

[andoverfabrics.com](http://andoverfabrics.com)

## About Beehive

BEEHIVE Bee-utiful Basics — French Bees, Botany Florals, and Riviera Checks. Three patterns, each in eight colorways, easily coordinate with any collection for the perfect accent, stunning borders, appliqué background and gorgeous backings.

andover

•  
•  
• [makower.uk](http://makower.uk)  
•

Free Pattern Download Available

1384 Broadway New York, NY 10018  
Tel. (800) 223-5678 • [andoverfabrics.com](http://andoverfabrics.com)

# Beehive Quilt



Introducing Andover Fabrics new collection: **BEEHIVE** by Renée Nanneman  
Quilt designed by Renée Nanneman

Quilt finishes 66" x 90"  
35 Blocks: 10" x 10"

*These time-honored blocks are a variation of the traditional Double Sawtooth, surrounded by neutral sashes and black setting squares, known as "posts" in some areas of the country. The outer pieced border adds a fun final touch.*

## Fabric Requirements

		Yardage	Fabric
<b>Fabric A</b>	setting, blocks	3/8 yard	9084-K
<b>Fabric B</b>	border	Fat 1/4 yard	9084-L
<b>Fabric C</b>	blocks, border	1 yard	9084-N1
<b>Fabric D</b>	blocks, binding	1 yard	9085-K
<b>Fabric E</b>	border	2 yards	9085-N1
<b>Fabric F</b>	blocks	1 5/8 yards	9092-L
<b>Fabric G</b>	border	5/8 yard	9092-N1
<b>5 Bee Prints</b>	blocks, border	Fat 1/4 yard ea.	
	9084-B	9084-N	9084-R
	9084-T	9084-Y	
<b>6 Florals</b>	blocks	Fat 1/4 yard ea.	
	9085-B	9085-L1	9085-N
	9085-R	9085-T	9085-Y
<b>6 Checks</b>	blocks	3/8 yard ea.	
	9092-B	9092-N	*9092-N2
	9092-R	9092-T	9092-Y
<b>*Backing</b>		6 1/2 yards	9092-N2

## Cutting Directions

**Note:** Read assembly directions before cutting patches. All measurements are cut sizes and include 1/4" seam allowances. A fat 1/4 is an 18" x 20"-22" cut. WOF designates the width of fabric from selvedge to selvedge (approximately 42" wide).

### Cutting for ONE block:

Check print	Cut (1) square 6 1/2"
Floral Print	Cut (6) squares 3" (or 2 7/8") for half-square triangles (HST, read Step 2)
Bee Print	Cut (4) squares 2 1/2" for block corners
Fabric F	Cut (6) squares 3" (or 2 7/8") for HST

### Fabric A

Cut (64) squares 2 1/2" (48 for "posts", 16 for block corners, read Step 1)

### Fabric B

Cut (13) squares 3" (or 2 7/8") for border HST

### Fabric C

Cut (50) squares 3" (or 2 7/8") for border HST

Cut (24) squares 2 1/2" for block corners (read Step 1)

### Fabric D

Cut (9) strips 2 1/2" x WOF for binding

Cut (18) squares 3" (or 2 7/8") for block HST

### Fabric E

Cut (82) sashes 2 1/2" x 10 1/2"

Cut (24) squares 3" (or 2 7/8") for block HST

### Fabric F

Cut (210) squares 3" (or 2 7/8") for block HST

### Fabric G

Cut (76) squares 3" (or 2 7/8") for border HST

### 5 Bee Prints

Cut (4) squares 2 1/2" for each block (100 squares total) (read Step 1)

Cut (14) squares 3" (or 2 7/8") for border HST

### 6 Florals

Cut (6) squares 3" (or 2 7/8") for HST for each block (168 squares total)

### 6 Checks

Cut (35) squares 6 1/2" (read Step 1)

### Backing

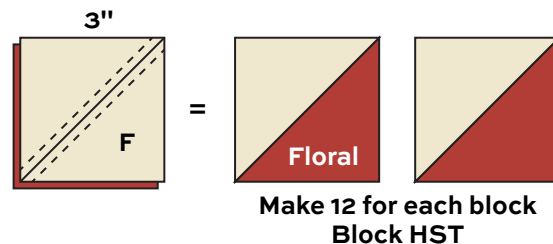
Cut (2) panels 33" x 74", pieced to fit quilt top with overlap on all sides

## Making the Quilt

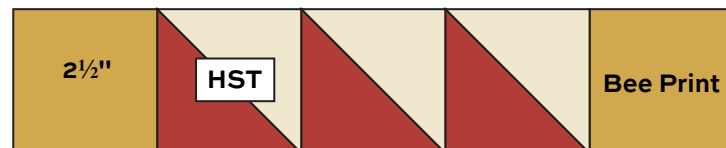
1. This is a scrappy quilt, so feel free to alter the various color combinations as you desire. However, the designer suggests that in each block, the check print 6 1/2" center square should match the bee print in the 4 corners of the block. For instance, gold check is paired with gold bee print; light brown check is paired with Fabric C; dark brown check is paired with Fabric A. Cut 4 matching 2 1/2" bee print corner squares for each 6 1/2" check center.

# Beehive Quilt

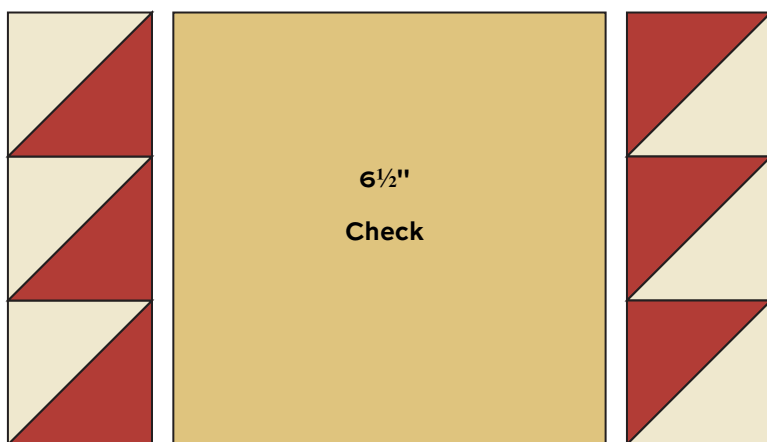
**2. Half-Square Triangles** The blocks and pieced border use half-square triangles (HST) that finish 2" square. Hint: The designer suggests using specialty paper for making HST, such as Star Singles Half-Square Triangle papers by Spinning Star Design. If you use a similar product, follow the directions for cutting the fabric the appropriate size. If you use the following directions, cut the squares 2<sup>7</sup>/<sub>8</sub>", the exact size needed to obtain HST that finish 2". If you wish for a little "fudge" room, and to make cutting easier, cut the squares 3". The HST are trimmed to 2<sup>1</sup>/<sub>2</sub>" as needed after stitching.



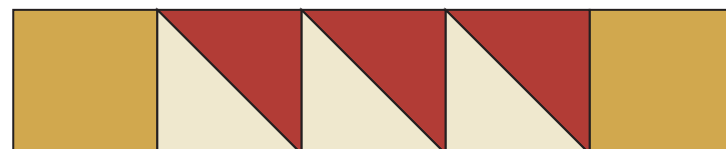
**3.** Use your favorite method to make HST, or follow these directions. Draw a diagonal line on the wrong side of each Fabric F 3" (2<sup>7</sup>/<sub>8</sub>" square (Diagram 1). Place a marked square on a floral print 3" square, right sides together. Sew 1/4" seam on each side of the marked line; cut apart on the marked line. Press open to make pieced HST. Make 12 matching HST for each block. Trim squares to 2<sup>1</sup>/<sub>2</sub>" if needed.



**4.** Referring to the block piecing diagram, arrange 12 matching HST around the center square, noting carefully the orientation of the patches. Join 3 HST in a row. Repeat to make 4 units like this. Before joining the units with the 2<sup>1</sup>/<sub>2</sub>" corner squares, stand back to be certain that the HST are turned correctly. Sew the units and patches to make 3 horizontal rows, and then join the rows. Make 35 blocks.

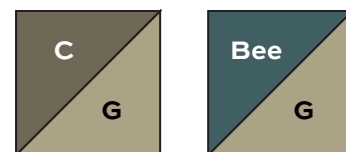


**5.** On a large flat surface or design wall, arrange 5 blocks in 7 rows, shifting the blocks so the colors are distributed to your satisfaction. Join 5 blocks alternately with 6 Fabric E sashes to make a block row. Make 7 block rows. Join 5 sashes alternately with 6 Fabric A 2<sup>1</sup>/<sub>2</sub>" "posts" to make a sash row. Make 8. Join the rows.



**Block – Make 35**

**6.** Referring to Step 2, make 99 HST for the pieced border using Fabric G and Fabric C 3" squares. Make 53 HST for the pieced border using Fabric G squares with the navy, tan, red, medium blue, and gold bee prints. Follow the quilt diagram or feel free to alter the number of each color HST for the border. Arrange the border HST around the quilt, noting the orientation of the patches, particularly in the corners. Fabric G brown check should touch the quilt all around. Join 43 HST to make a side border. Repeat. Sew to the sides. Join 33 HST for the top border and sew to the top. Repeat for the bottom.



**Make 99**

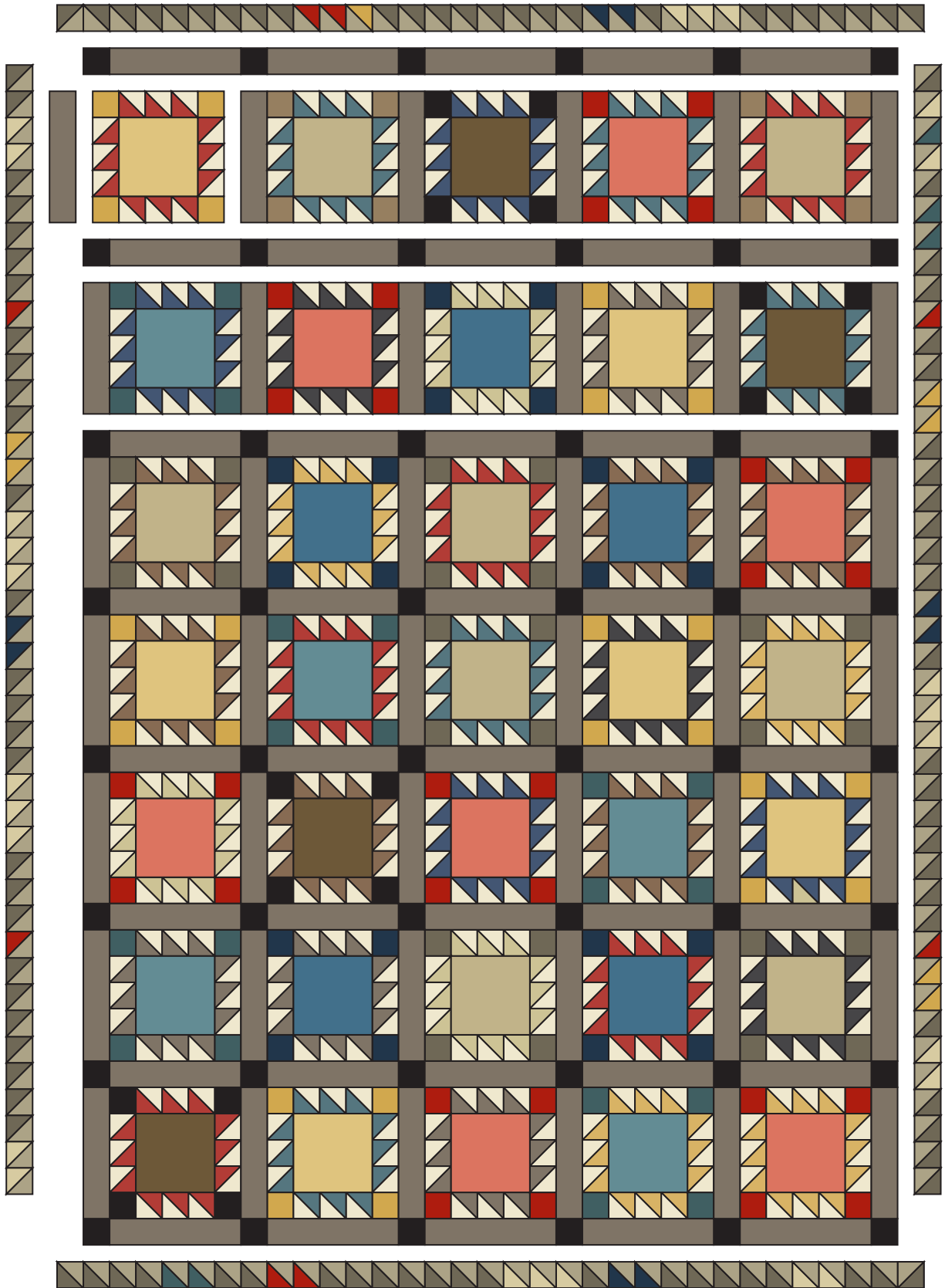
**Make 53**

**Border HST**

## Finishing the Quilt

**7.** Layer the quilt with batting and backing and baste. Quilt in the ditch around block patches. Quilt the check center squares as you wish. Diagonal lines that move from side to side connecting the HST could be interesting. Bind to finish the quilt.

# Beehive Quilt



Quilt Diagram



# Beehive

RENÉE NANNEMAN



9084-B



9084-K



9084-L



9084-N



9084-N1



9084-R



9084-T



9084-Y



9085-B



9085-K



9085-L1



9085-N



9085-N1



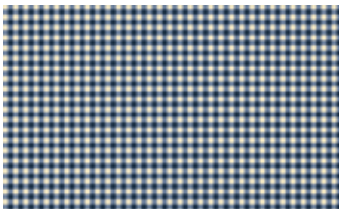
9085-R



9085-T



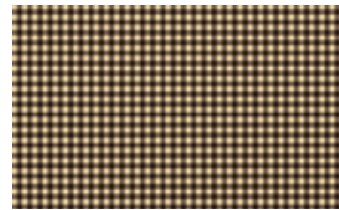
9085-Y



9092-B



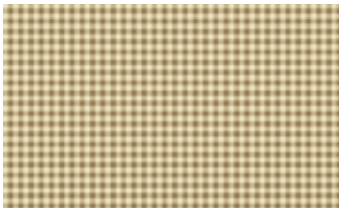
9092-L



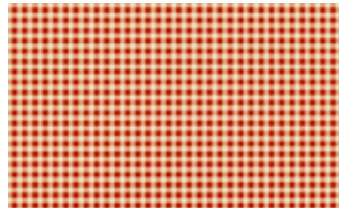
9092-N



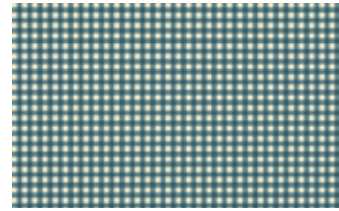
9092-N1



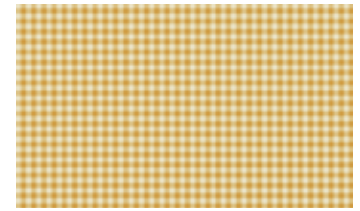
9092-N2



9092-R



9092-T



9092-Y

All fabrics are used in quilt pattern. Fabrics shown are 25% of actual size.

andover

•  
•  
•  
•  
[makower uk](http://makower.uk)

Free Pattern Download Available

1384 Broadway New York, NY 10018  
Tel. (800) 223-5678 • [andoverfabrics.com](http://andoverfabrics.com)