

Amelia

FABRICS BY JO MORTON



Amelia Quilt Design:
Candy Hargrove

Quilt Size: **69½" x 69½"**

andoverfabrics.com

About Amelia

It was very exciting to find the clam shell design antique fabric and to search for accompanying pieces to create this beautiful line for you with the feel of an early 19th century design – *Jo Morton*



andover



makower uk
The Henley Studio

Free Pattern Download Available

1384 Broadway New York, NY 10018
Tel. (800) 223-5678 • andoverfabrics.com

Amelia Quilt



Introducing Andover Fabrics new collection: **Amelia** by Jo Morton

Quilt designed and made by Candy Hargrove, quilted by Maggi Honeyman

Quilt finishes 69½" x 69½"

12 Framed Blocks: 8" x 8"

37 Star Blocks: 8" x 8"

The unusual placement of the two pieced blocks results in a wall quilt with an interesting diagonal design. Elegant paisley clamshells combine with softly colored floral prints and stripes. The subtle use of light, medium, and dark prints forms stars that seem to fade and reappear. All is framed by a lovely striped border print.

Fabric Requirements

		Yardage	Fabric
Fabric A	block centers	2 yards	7267-B
Fabric B	outer border	2 yards	7268-B
*Fabric C	stars	½ yard	7269-BN
Fabric D	stars	½ yard	7270-BN
Fabric E	stars	½ yard	7271-B
Fabric F	stars, binding	1 yard	7272-B
Fabric G	stars	½ yard	7272-BR
Fabric H	border, stars	¾ yard	7273-BR
Fabric I	stars	½ yard	7274-B
Fabric J	block frames	½ yard	7274-BO
Fabric K	star blocks	2½ yards	7275-BL
*Backing		4½ yards	7269-BN

Cutting Directions

Note: Read assembly directions before cutting patches. All measurements are cut sizes and include ¼" seam allowances. Border measurements include extra length for insurance. WOF designates the width of fabric from selvedge to selvedge (approximately 42" wide).

Cutting for 1 Star Block

Patches from Background Fabric K:

Cut (4) corner squares 2½" x 2½"

Cut (4) rectangles 2½" x 4½" for Flying Geese Units

Star Patches:

Cut (1) center square 4½" x 4½"

Cut (8) squares 2½" x 2½" for Flying Geese Units

****Note:** Yardage is sufficient to cut up to 8 stars from the ½ yard star prints. This allows you flexibility to make more or fewer blocks from these fabric as you wish.

Fabric A Fussy-cut (12) bias squares 6½" x 6½"
(read Step 1 before cutting)

Fabric B Fussy-cut (2) borders 5¾" x 59½",
cut lengthwise, centering stripe

Fabric C Cut (**7) stars
(see above for cutting 1 Star Block)

Fabric D Cut (**4) stars

Fabric E Cut (**5) stars

Fabric F Cut (8) strips 2½" x WOF for binding
Cut (4) setting squares 5¾" x 5¾"
Cut (4) stars

Fabric G Cut (**4) stars

Fabric H Cut (2) side borders 2" x 59½",
cut crosswise and pieced
Cut (2) top/bottom borders 2" x 56½",
cut crosswise and pieced
Cut (5) stars

Fabric I Cut (**7) stars

Fabric J Cut (24) framing strips 1½" x 8½"
Cut (24) framing strips 1½" x 6½"
Cut (1) star

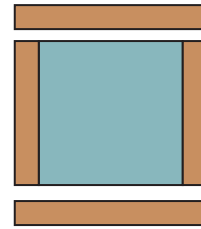
Fabric K Cut (148) block background corner
squares 2½" x 2½"
Cut (148) rectangles 2½" x 4½" for
Flying Geese units

Backing Cut (2) panels 39" x 78", pieced to fit
quilt top with overlap on all sides

Amelia Quilt

Making the Quilt

1. The Framed Blocks have a printed clamshell centered within each middle square. Use a 6½" square acrylic ruler to cut these patches. Align the diagonal line of the ruler with the diagonal center of a clamshell, referring to the quilt photo for placement. Cut along 2 sides of the ruler. Rotate the fabric and cut the remaining 2 sides. Cut 4 of each color clamshell (red, brown, and blue). Cut each square so clamshells are positioned the same. Handle the squares carefully.
2. Refer to the Framed Block diagram. To prevent the center squares from stretching, pin the framing strips on top of each square, right sides together, and sew with the bias square on the bottom. Sew a Fabric J 6½" strip to one side of a clamshell square. Repeat on the opposite side. Press seam allowances away from the middle. Pin and sew the 8½" strips to remaining edges. Make 12 blocks like this. Set aside.
3. The Star Blocks are made with quick Flying Geese Units. Draw a diagonal line on the wrong side of each Star Fabric 2½" square. Place a marked square on one end of a Fabric K 2½" x 4½" rectangle, right sides together. Sew on the marked line; trim away and discard excess fabric (Diagram 1). Press open. Repeat this process on the opposite end of the rectangle (Diagram 2) to make a Flying Geese Unit. Make 4 FG Units for each block.
4. Referring to the Star Block diagram, join 4 Flying Geese Units, 4 Fabric K corner squares, and the center 4½" square to make 3 rows. Press seam allowances away from the FG Units. Join the rows to make a block. Make a total of 37 Star Blocks.
5. Referring to the Quilt Diagram, position the Star Blocks and Framed Blocks in 7 rows of 7 blocks each, carefully noting placement of the blocks. Follow the diagram for color placement, or arrange the Star Blocks as you wish. Just be sure that the Framed Blocks form diagonal lines in the design and that a dark Star Block is in the center. Rotate the Framed Blocks as shown so the clamshells are pointing away from the quilt's center. Sew the blocks in 7 rows. Join the rows.
6. Sew Fabric H 56½" borders to the sides of the quilt. Sew longer Fabric H borders to the top and bottom.
7. Note how the print of the Fabric B outer border moves around the quilt. Sew Fabric B borders to the sides. Sew Fabric F squares to ends of remaining borders. Sew to the top and bottom.



Framed Block – Make 12

2½" 2½" x 4½"

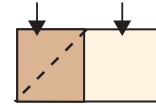


Diagram 1

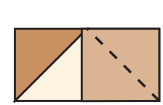
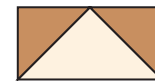
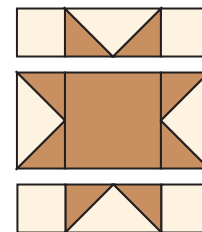


Diagram 2



**Flying Geese Unit
Make 4 per Block**

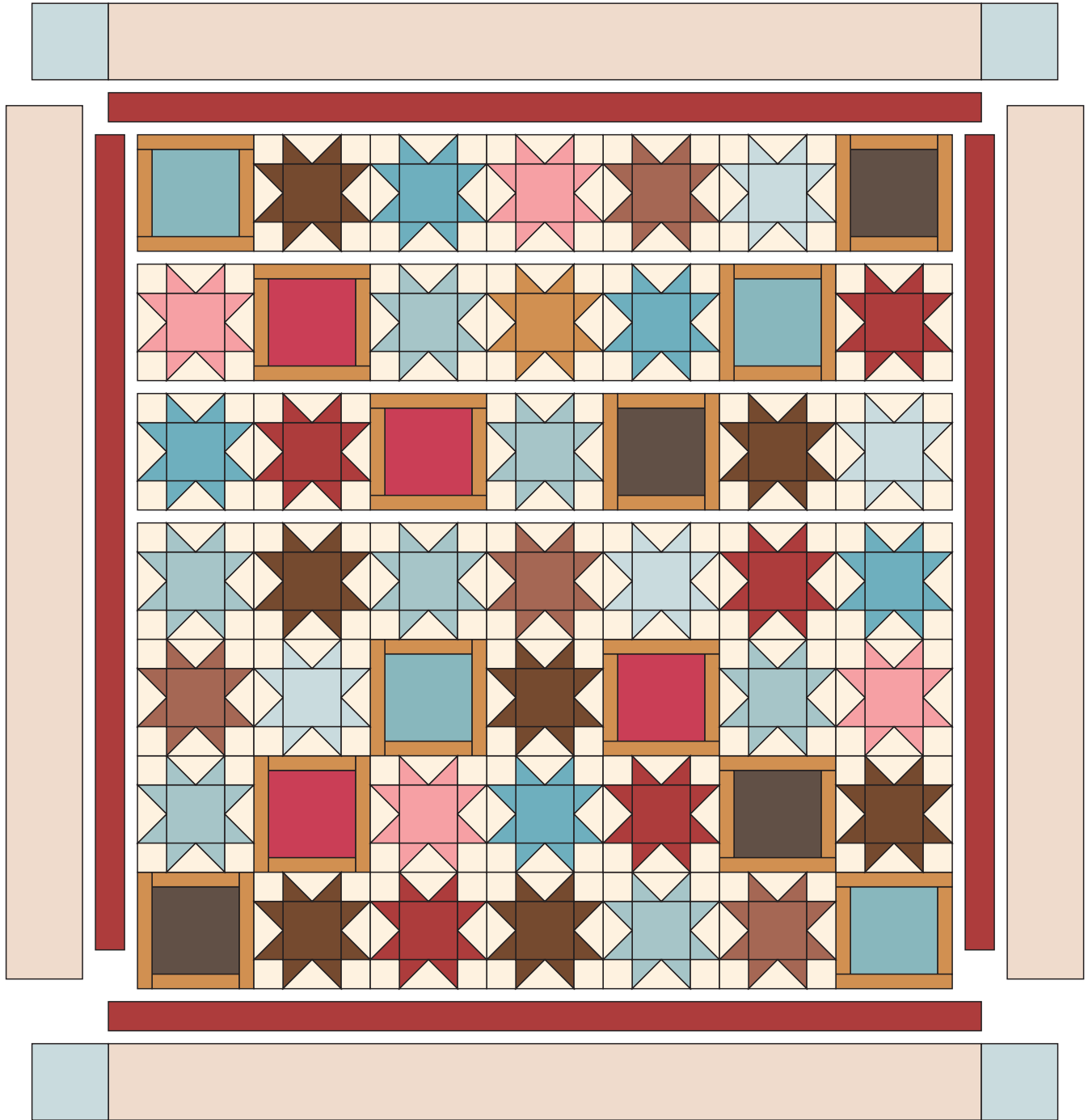


Star Block – Make 37

Finishing the Quilt

8. Layer the quilt with batting and backing and baste. Quilt in the ditch around borders and block patches. Quilt around the printed motifs in the blocks and outer border. Bind to finish the quilt.

Amelia Quilt



Quilt Diagram

Amelia

FABRICS BY JO MORTON



7267-B*



7268-B*



7270-BN*



7271-B*



7272-B*



7272-BR*



7269-BN*



7273-BR*



7274-B*



7274-BO*



7275-BL*



7267-E



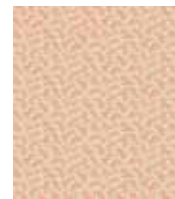
7268-E



7270-EN



7271-E



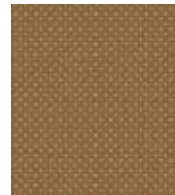
7272-E



7272-EN



7269-EN



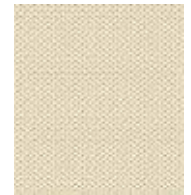
7273-EN



7274-E



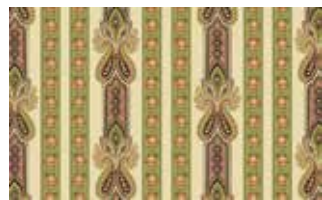
7274-EN



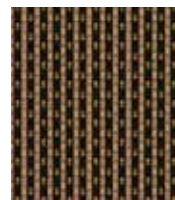
7275-EL



7267-P



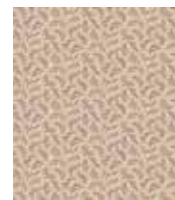
7268-PG



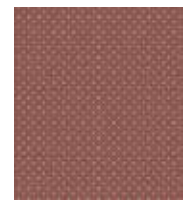
7270-PK



7271-PG



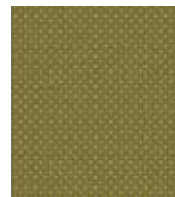
7272-P



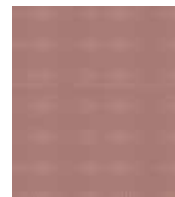
7273-P



7269-PN



7273-PG



7274-P



7274-PG



7275-PL

*Indicates fabrics used in quilt pattern. Fabrics shown are 10% of actual size.

andover



makower uk
The Henley Studio

Free Pattern Download Available

1384 Broadway New York, NY 10018
Tel. (800) 223-5678 • andoverfabrics.com