

# Michiko

Finished size 71" x 71" (180cm x 180cm)  
by Lynne Goldsworthy of [lilysquilts.blogspot.com](http://lilysquilts.blogspot.com)



makower uk

Makower UK, Unit 14, Cordwallis Business Park, Clivemont Road, Maidenhead, Berkshire SL6 7BU  
+44(0)1628 509640 sales@makoweruk.com www.makoweruk.com

# Michiko

Finished size 71" x 71" (180cm x 180cm)  
by Lynne Goldsworthy of [lilysquilts.blogspot.com](http://lilysquilts.blogspot.com)

## Fabric Requirements

Design	Amount	Cut
1473 B8	50cm / 20"	Forty-one fan bases
1473 B26	F8th	Eight fan blades
1473 T3	F8th	Twelve fan blades
1473 T24 (BKG)	3.75m / 4 yds	See cutting instructions
2330 B	FQ*	Four full fans + four tails
2330 T	FQ*	Five full fans + five tails
2331 R	FQ	Four full fans + four tails
2331 R (backing)	3.75m / 4 yds	Two equal lengths
2331 T	FQ	Four full fans + four tails
2332 B	FQ	Twelve fan blades + four tails
2332 Q	F8th	Eight fan blades
2333 P	F8th	Eight fan blades + four tails
2334 B	F8th	Twelve fan blades
2334 Q	F8th	Eight fan blades + four tails
2335 B	F8th	Twelve fan blades
2335 Q	F8th	Eight fan blades
2336 B	FQ	Twelve fan blades + four tails
2336 Q	F8th	Eight fan blades + four tails
2336 R	FQ	Twelve fan blades + four tails
2336 R (binding)	50cm / ½ yd	Seven 2 ½" WOF strips
Wadding	79" square - 279 Cotton Mix 80-20 from <a href="http://www.vlieseline.com/en">http://www.vlieseline.com/en</a>	
Fusible web	1 metre / 1yd Bondaweb from <a href="http://www.vlieseline.com/en">http://www.vlieseline.com/en</a>	
Threads	Aurifil 50wt for piecing and 40wt for quilting from <a href="http://www.aurifil.com">http://www.aurifil.com</a>	
Templates	One each of templates A to I	

\* Swap for 50cms or ½ yd if you want to fussy cut cranes in each of the fans.

## Notes:

- **Make sure to visit <http://www.makoweruk.com/projects/> to ensure you are working from the most up-to-date version of the pattern**
- Read the pattern in full before starting
- ¼" seams are used throughout except where stated otherwise
- Press after each seam, pressing seams open or to one side as preferred
- WOF - width of fabric - a strip of fabric cut from selvedge to selvedge
- BKG - background

## Cutting the fabrics

1. Listed below are the templates and the sections of the fan blocks they are to be used for. Where templates contain red dots, mark these onto the back of the pieces being cut out either using an erasable marker or by cutting small (1/8") snips into the seam allowance:
  - Template A for the full fans.
  - Template B for the fan frames (Template B is in two parts and should be taped together at the red lines). These will be cut from BKG fabric.
  - Template C for the fan bases.
  - Template D for the fan tails (these will be raw edge appliqued – see instructions at step 4).
  - Templates E, F and G for the sides and base of the fan blocks (BKG fabric).
  - Template H for the fan blades.

2. Following the cutting lists in the fabric requirements table, cut out the full fans and the fan blades from the Michiko print and linen texture fabrics. Where twelve fan blades are to be cut from one F8th, see fig 1 for cutting layout.

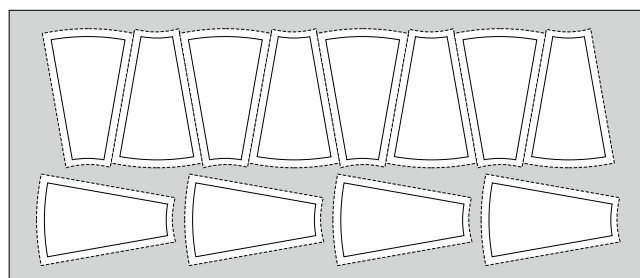


fig 1

3. Trace forty-one template D shapes onto fusible web and cut out roughly. Fuse each of those to the back of the fan tail fabrics (Michiko prints) and cut out. Remove paper from the back.

4. Cut the fan base fabric (dark blue linen texture) into four 4" WOF strips and cut those into forty-one fan bases. Cut twelve from each strip orientating them into pairs as shown in fig 2.

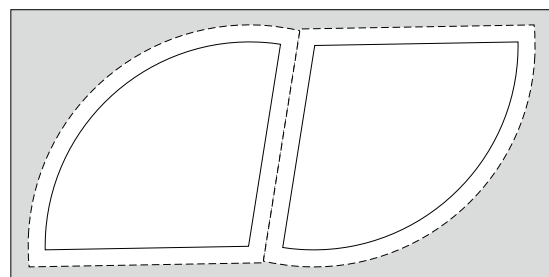


fig 2

5. Cut the BKG fabric as follows:

- Cut eight 11" WOF strips. From those cut twenty-one 10" lengths and eight 11" squares.
- Cut each of the 10" x 11" pieces into two B templates and two G templates (see fig 3).
- Cut the 11" squares in half on the diagonal to yield two half square triangles per square.
- Cut six 8 1/2" WOF strips. From those cut forty-one E and forty-one F templates
- From the remainder cut two 8 1/4" squares and cut those in half on the diagonal to yield two half square triangles per square.

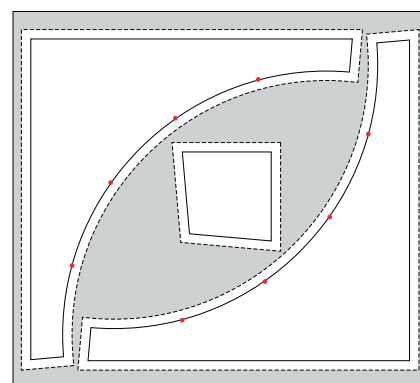


fig 3

6. Cut the backing fabric into two equal lengths and the binding fabric into seven 2 1/2" WOF strips.

### Making the Quilt Top

1. Sew the fan blades into sets of five following the fabric layout in the main quilt image.
2. Sew the fan bases (template C) to the inner curve of these pieces and the full fan pieces, taking care to match the marked points on the fan bases to the seams of the pieced fans or to the marked points on the full fan pieces.
3. Sew the outer curve of these to the BKG fan frame pieces (Template B).
4. Fuse the fan tails to the template G pieces aligning the edges of the cut fabric as shown in fig 4 (the white dashed line indicates the seam lines on piece G).
5. Sew the pieces made above plus the template E and F pieces into a four patch as shown in figs 5 and 6.
6. Sew the fans, the BKG 8 1/2" and 11" half square triangles into the eleven rows as shown in fig 7 then sew those rows together to finish the quilt top.

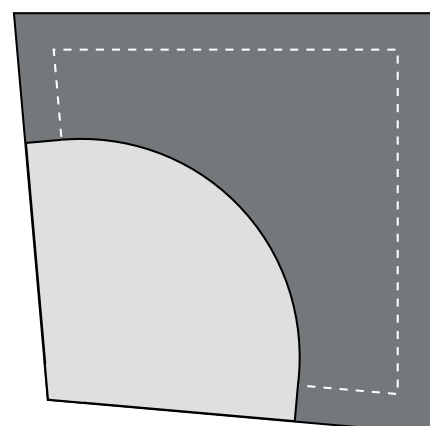


fig 4

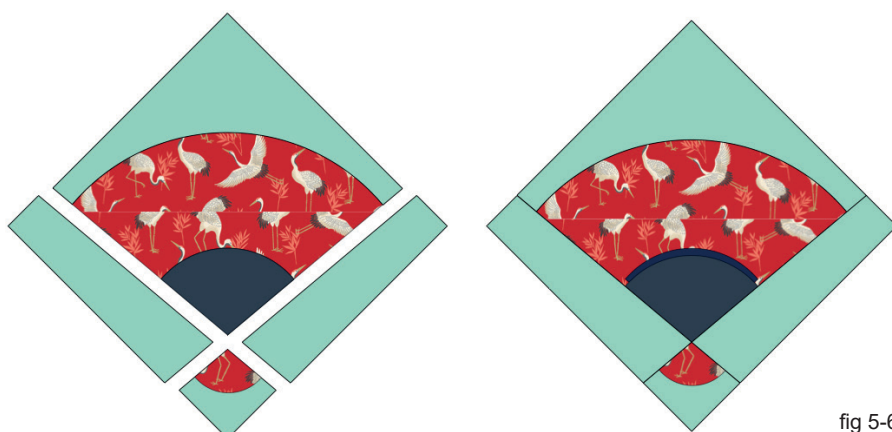


fig 5-6

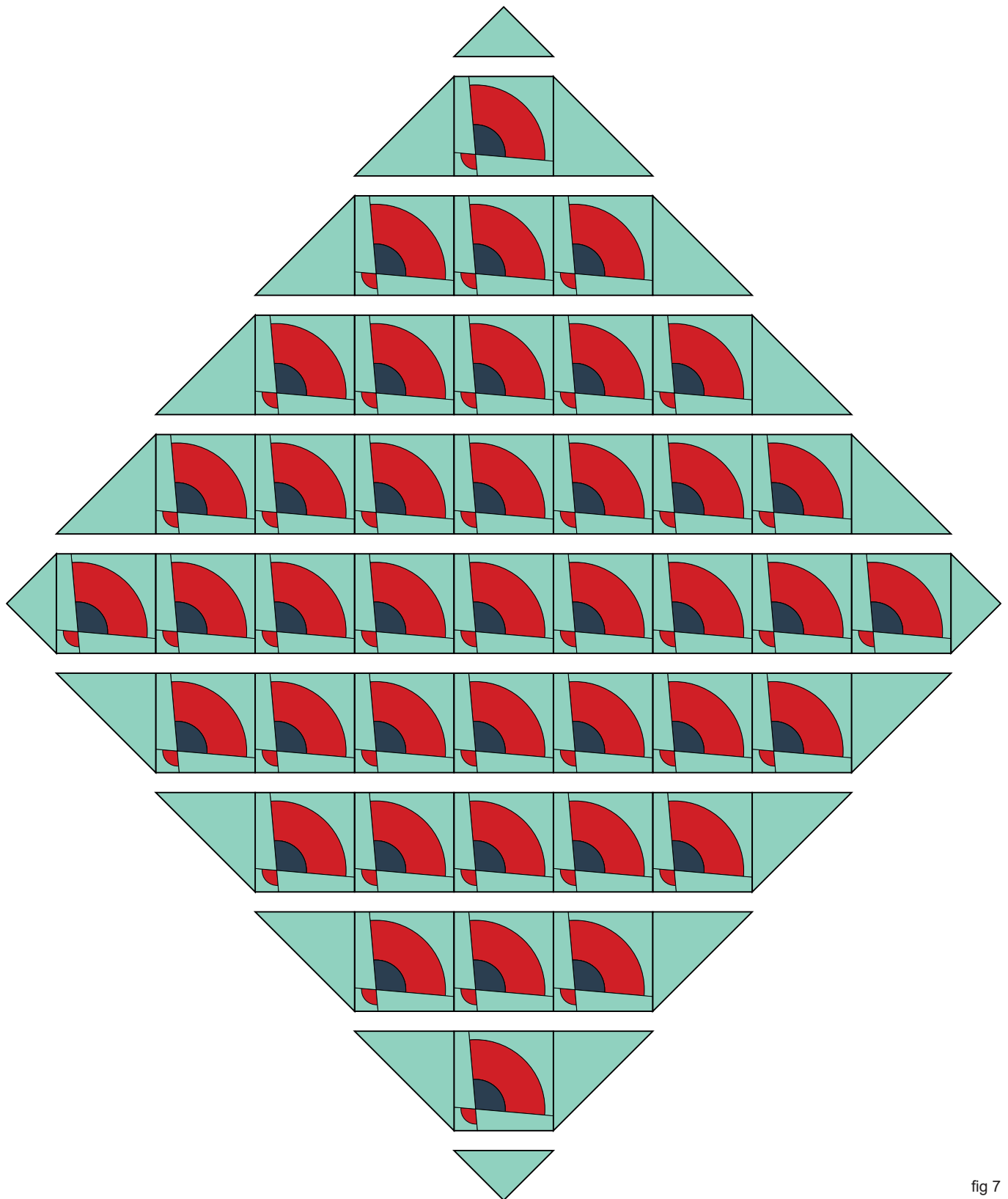
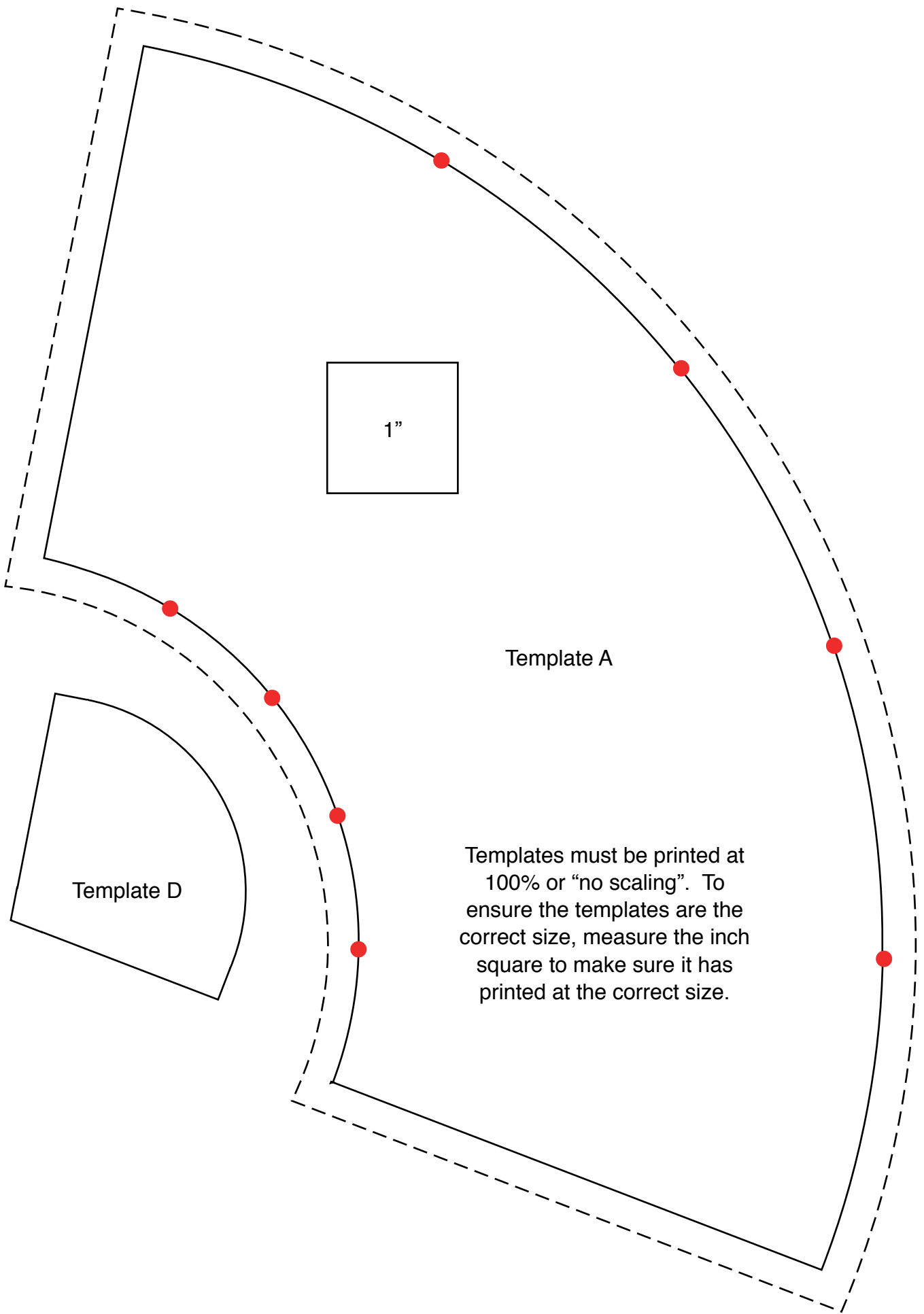


fig 7

### Finishing the quilt

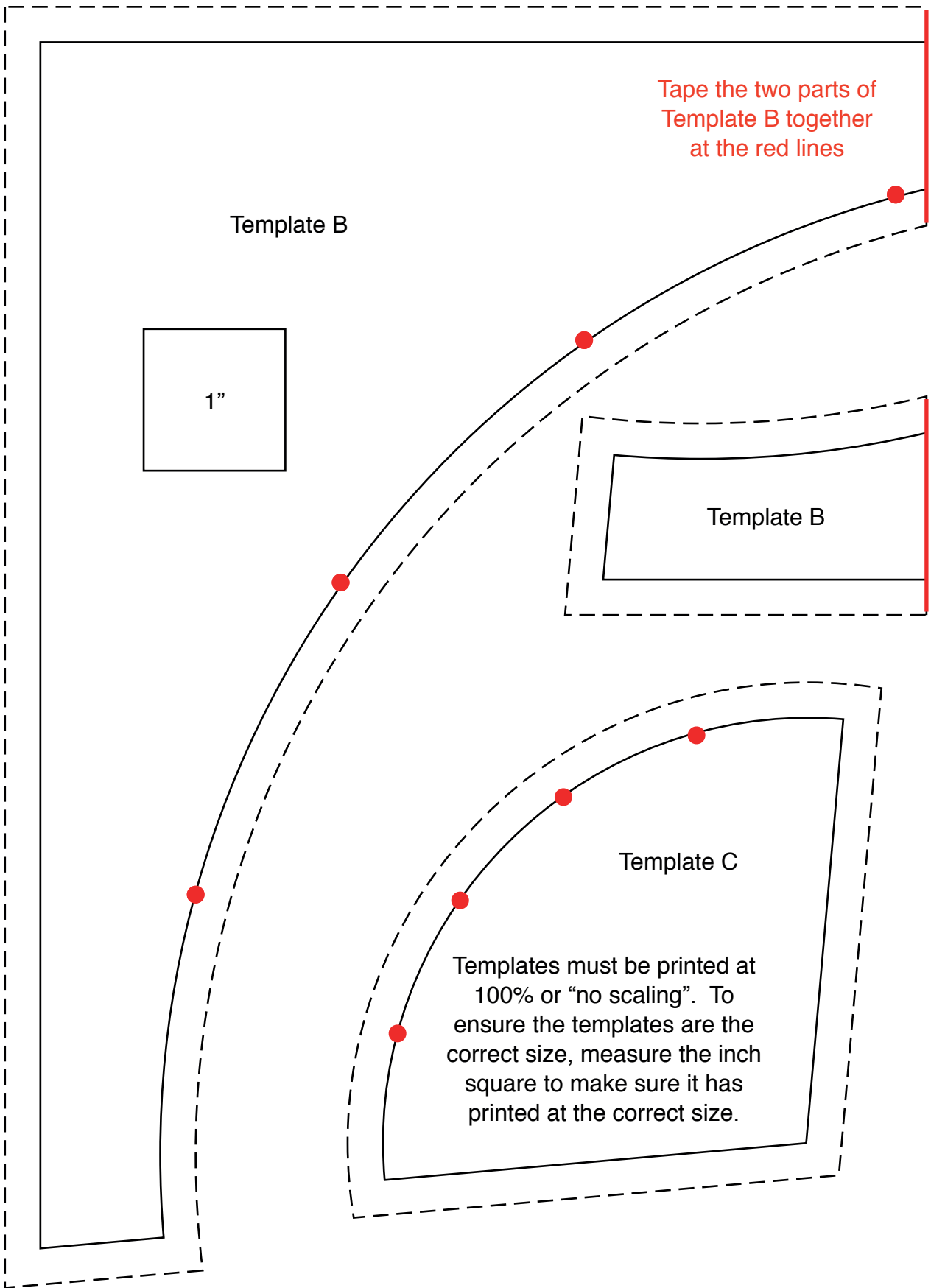
1. Sew the binding strips end to end using diagonal or straight seams as preferred and press wrong sides together along the length to make a double fold binding.
2. Sew the two pieces of backing fabric together. Make a quilt sandwich, basting together the back, the wadding and the top.
3. Quilt as desired then trim square, removing excess wadding and backing. We quilted horizontal wavy lines approx. 1" using an aqua 40wt Aurifil thread on the front and back.
4. Bind, taking care to mitre the corners.

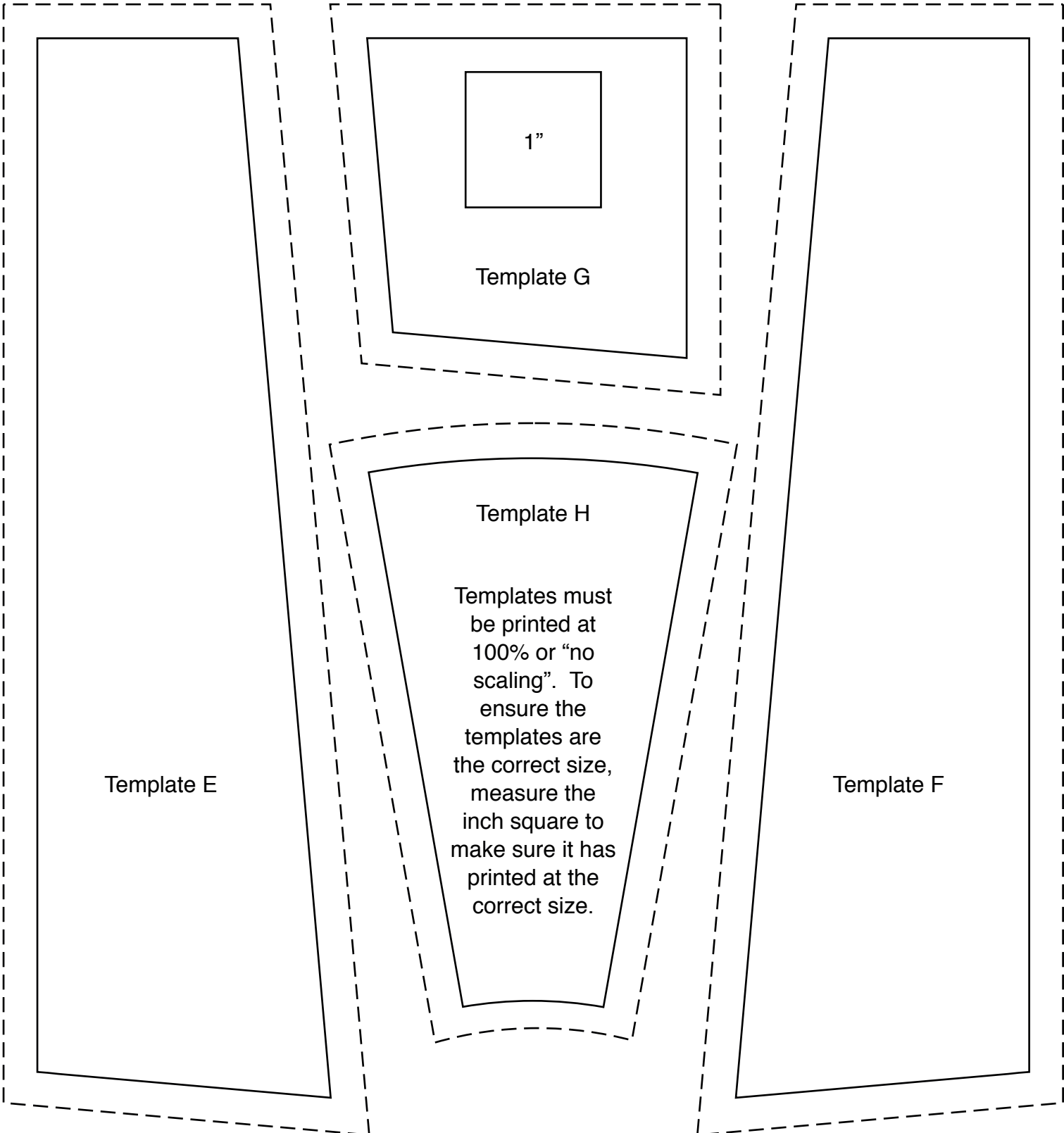


Template A

Template D

Templates must be printed at 100% or "no scaling". To ensure the templates are the correct size, measure the inch square to make sure it has printed at the correct size.





1"

Template G

Template H

Templates must be printed at 100% or "no scaling". To ensure the templates are the correct size, measure the inch square to make sure it has printed at the correct size.

Template E

Template F



\*2330/B Large Floral



\*2330/T Large Floral



\*2331/R Cranes



\*2333/T Foliage



\*2333/P Foliage



\*2331/T Cranes



\*2335/Q Blossom



\*2334/B Butterflies



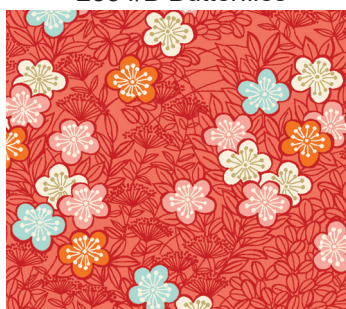
\*2334/Q Butterflies



\*2335/B Blossom



\*2332/B Koi



\*2336/R Bushclover



\*2336/B Bushclover



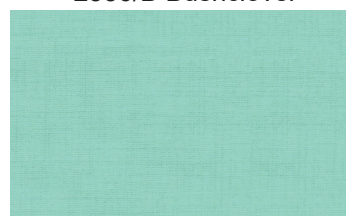
\*2332/Q Koi



\*2336/Q Bushclover



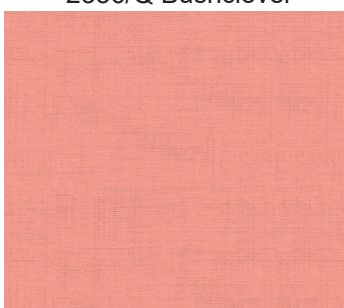
1473/B26 New Colour



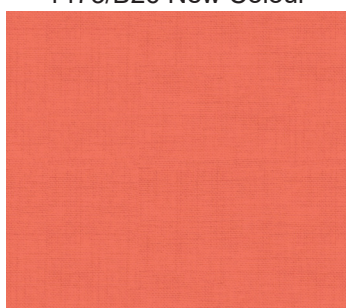
1473/T24 New Colour



1473/Y22 New Colour



1473/P23 New Colour



1473/C25 New Colour



\*2337/1 Panel Each panel 60 x112cms (24" x 44")